

March 2008

Queensland Festival of Photography

April 2008



www.festivalofphotography.com.au



umbrella
studio contemporary arts

Umbrella Studio
482 Flinders Street
Townsville

e: info@umbrella.org.au
t: (07) 4772 7817
www.umbrella.org.au

Sweet Crush

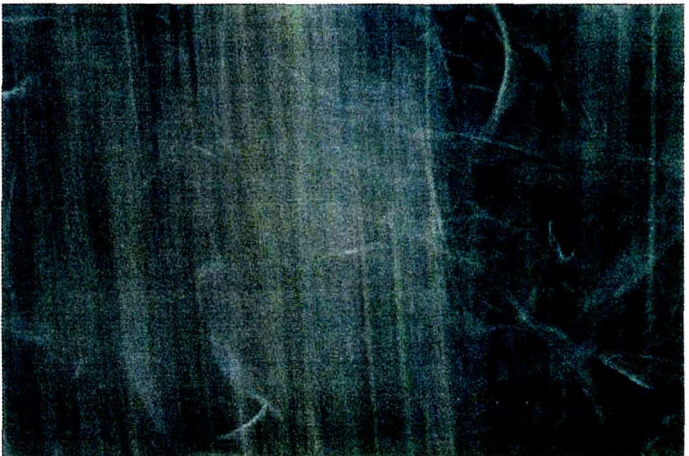
Photography – Clive Hutchison

Soundscape – David Salisbury

4 April – 11 May

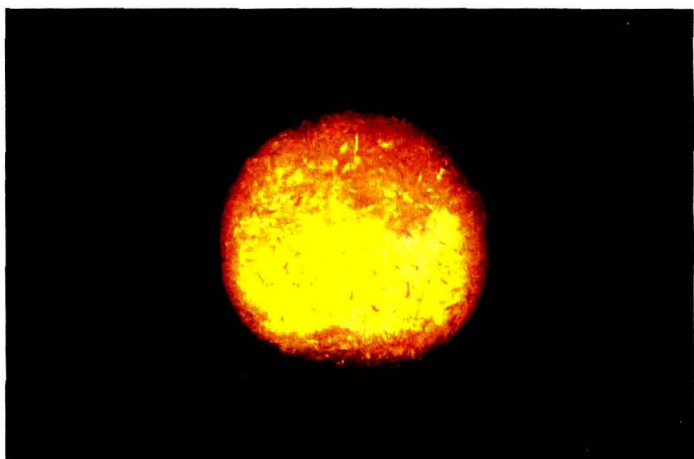
The sugar industry underpins the economic and social fabric of a significant cross section of North Queensland. The physical process of crushing the cane is an intense industrial operation that converts the harvested raw materials into a commercial commodity. The aim of the **Sweet Crush** project is to recontextualise the ambient sounds and visual narratives embedded within the crushing process. The project engages with a redefinition of rhythms, iconography, visual and aural melody and contrast within these everyday events in the sugar industry. This project was conducted in and around the South Johnston sugar mill by Clive Hutchison and David Salisbury during the 2007 sugar-crushing season and will explore new and undiscovered worth and meaning embedded in these events.

Clive Hutchison 2007





Clive Hutchison 2007



Clive Hutchison 2007



Clive Hutchison 2007