



First confirmed records with molecular data of the terrestrial flatworm *Bipalium kewense* Moseley, 1878 (Tricladida, Geoplanidae) in Madagascar, Egypt, and South Africa

Romain Gastineau¹, Andrianjaka Ravelomanana², Remondah Rushdy Ramzy³, Marcel Koken⁴, Suzelyce Eva Soavolamanoro⁵, Christian Otis⁶, Brian Boyle⁶, Delphine Gey⁷, Leigh Winsor⁸, Jean-Lou Justine⁹

1 Institute of Marine and Environmental Sciences, University of Szczecin, Szczecin, Poland

2 Mention Entomologie, Culture, Élevage et Santé, Faculté des Sciences, Université d'Antananarivo, Madagascar

3 Asian School of the Environment, Nanyang Technological University of Singapore, Singapore

4 LABOCEA R&D, CNRS, 120 Avenue Alexis de Rochon, 29280, Plouzané, France

5 Independent researcher, Madirokely, Nosy be, Madagascar

6 Plateforme d'Analyse Génomique, Institut de biologie intégrative et des systèmes, Université Laval, Québec, QC, Canada

7 MCAM, Muséum National d'Histoire Naturelle, 61 rue Buffon, 75231 Paris Cedex 05, France

8 College of Science and Engineering, James Cook University, Townsville, Queensland, Australia

9 ISYEB, Institut de Systématique, Évolution, Biodiversité (UMR7205 CNRS, EPHE, MNHN, UPMC, Université des Antilles), Muséum National d'Histoire Naturelle, CP 51, 55 rue Buffon, 75231 Paris Cedex 05, France

Corresponding author: Romain Gastineau (romain.gastineau@usz.edu.pl)

Abstract. The land flatworm *Bipalium kewense* Moseley, 1878 is the most widely distributed invasive species of land flatworm, being found in over 78 countries. A specimen was recently collected in an urbanized part of the capital city of Antananarivo in Madagascar, identified on the basis of external morphology and later confirmed by molecular methods. This represents the first strictly confirmed occurrence of the species in Madagascar. Previous African records of *Bipalium kewense* are summarized, and two records from continental Africa (Egypt and South Africa) are confirmed by molecular barcoding.

Key words. Africa, Bipaliinae, Continenticola, Indian Ocean, mitochondrial genome, Platyhelminthes

Gastineau R, Ravelomanana A, Ramzy RR, Koken M, Soavolamanoro SE, Otis C, Boyle B, Gey D, Winsor L, Justine J-L (2025) First confirmed records with molecular data of the invasive terrestrial flatworm *Bipalium kewense* Moseley, 1878 (Tricladida, Geoplanidae) in Madagascar, Egypt, and South Africa. *Check List* 21 (3): 557–564. <https://doi.org/10.15560/21.3.557>

INTRODUCTION

In recent years, there has been particular interest in invasive terrestrial flatworms, or Geoplanidae, as many Asian, South American, or Oceanian species have increasingly appeared in Europe, North America, or various other regions. These animals have probably been inadvertently introduced via the plant trade (Alvarez-Prezas et al. 2014; Carbayo et al. 2016; Justine et al. 2018, 2022, 2024, Mateos et al. 2020; Sluys 2016).

With their hammerhead shape, members of the subfamily Bipaliinae are possibly the most representative and evocative of geoplanids. Of these, *Bipalium kewense* Moseley, 1878, is the most widely distributed introduced species and is now found in over 78 countries worldwide (European Commission 2022), with new observations regularly published (for recent examples, see Cilia 2024; de Luna et al. 2022; de Luna and Boll 2023; Mori et al. 2024; Nicolosi et al. 2025). The colonizing success of this species has been attributed to its ability to reproduce asexually (Hyman 1943). This species is native to the uplands of Indochina (de Beauchamp 1939; Winsor 1983; European Commission 2022), as defined as a peninsula in Southeast Asia between the Bay of Bengal and the South China Sea that comprises Vietnam, Cambodia, Laos, Thailand, western Malaysia, and Myanmar.

In the Afrotropics, *B. kewense* has been sparsely recorded, with the highest concentration of observation occurring in South Africa. The species has been recorded in Cameroon (iNaturalist <https://inaturalist.ala.org.au/observations/135218705>, accessed 10.04.2025); Cape Verde Islands (Luther 1956); Egypt (Ali 2008; Mori et al. 2023); Kenya (Ogren et al. 1992); Madagascar (Winsor 1983 and this paper); Mauritius (Geba 1909; Winsor 1983),



Academic editor: Fernando Carbayo

Received: 17 February 2025

Accepted: 22 April 2025

Published: 21 May 2025

Figure 1. Naturhistorisches Museum (NHM) Wien. Catalogue of the Graff Collection that was donated by the University of Graz in 1974. Entry for V 4092, *Bipalium kewense*. The “m” in column 5, Stückzahl (number of pieces) stands for “mehrere” (several).

Inv. Nr.	Name	Fundort	Herkunft	Stückzahl	Anmerkung
V. 4090	<i>Bipalium javanicum</i> (Lom.)	Orientalisch	Graff 16252	1	Tubellaria
V. 4091	<i>B. kelleri</i> Graff	Mossi Bi'	1913 14559	1	"
V. 4092	<i>B. kewense</i> Mos.	Madagascar.	Suter 16868	m.	"

Reunion (de Beauchamp 1948); Rwanda (iNaturalist <https://inaturalist.ala.org.au/observations/26957711>, accessed 10.04.2025); Saint Helena (Ball, 1977); São Tomé and Príncipe (Sluys et al. 2017); South Africa (Trimen 1887; Fisk 1889; Jameson 1907), and Zimbabwe (Winsor 1983).

In his comprehensive review of *B. kewense*, Winsor (1983) noted that the specimen collection V4092 “*Bipalium kewense*” from the Naturhistorisches Museum Wien (NHM Wien) (Vienna) was from “Madagascar” (Figure 1), and this information has been cited in later publications (e.g. Mori et al. 2024). The collection V4092, comprising 13 non-sexual typical specimens of *B. kewense* (LW unpublished data) was originally donated or more likely sold by Henry Suter to the Zoological Institute of the University of Graz, Austria. Henry Suter (1841–1918), a Swiss national, was a talented amateur naturalist who had emigrated to New Zealand. He supplemented his meagre income by selling natural history specimens to overseas collectors and museums. Friends and colleagues gave him duplicate specimens from their collections that he was later able to sell, and as Suter had never been to Madagascar (Hyde 2017), this was possibly the source of specimen collection V4092.

The specimen collection V4092, originally from the Zoological Institute of the University of Graz, was transferred to the NHM around 1974 (R. Schuster to L. Winsor, letter dated 9 February 1976). Interestingly, there is no mention of this specimen record in Madagascar in Graff (1899), nor was it mentioned by Mell (1903) or Geba (1909), both from the Graz school, nor by de Beauchamp (1948) in their studies and review of terrestrial flatworms from Madagascar. In fact, none of these authors reported the presence of *B. kewense* in Madagascar, although Geba (1909) described *Placocephalus isabellinus* from Mauritius, later synonymized with *B. kewense* (Winsor 1983), and specimens of *B. kewense* had been found on La Reunion by M. Remy (de Beauchamp 1948). Details of the exact provenance and date of Suter’s specimens comprising V4092 are unknown. Therefore, although strongly suspected, the presence of *B. kewense* in Madagascar has yet to be confirmed.

A specimen of Bipaliinae was recently found in Antananarivo, the capital city of Madagascar (Figure 2). It was subsequently identified from a photograph of the live specimen as *B. kewense* (Figure 3). The speci-

Figure 2. Map of the sampling places. Blue: countries in which *Bipalium kewense* has been reported besides the records from this study. Blue dot: Cairo in Egypt where the species has been reported. Red dots: new geographical records with molecular information. There is no red dot indicated for South Africa since the provenance of the specimen from that county is unknown.

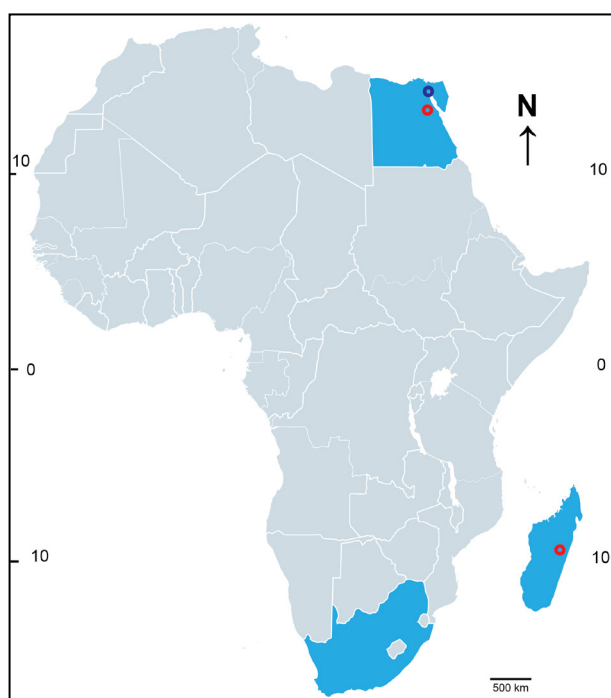




Figure 3. *Bipalium kewense*, living specimen (MNHN JL518) photographed in Antananarivo, Madagascar.

men was deposited in the Muséum National d'Histoire Naturelle (MNHN) in Paris and its identification was corroborated by sequencing its mitochondrial genome and comparing it with the reference sequence. Unconfirmed observations from iNaturalist are also discussed.

To extend our knowledge on the presence of *B. kewense* in continental Africa, we provide two records from Egypt and South Africa, which are the first records confirmed by molecular barcoding (partial *cox1* gene).

METHODS

On 27 March 2023 a specimen of *B. kewense* was found in a highly urbanized environment, in the kitchen of a house in the '67Ha' residential area, North-Ouest part of the capital city of Antananarivo, Analamanga Region). The specimen was transferred out of the country with permit 151/23/MEDD/SG/DGGE/DAPRNE/SCBE.Re and forwarded to the Muséum National d'Histoire Naturelle (MNHN) in Paris, France where it was identified by two of us (LW and JLJ) and registered in the collection under accession number MNHN JL518. The specimen from Egypt was collected by one of us (RRR) in August 2016 in an experimental farm on the campus of Assiut University (27°11'07.1"N, 031°09'29.0"E) and owned by the university. The specimen was fixed in ethanol and sent to the MNHN to be registered in the collections as MNHN JL303. The last specimen was collected on 11 August 2019 by the French plant inspection services (Direction Régionale de l'Alimentation, de l'Agriculture et de la Forêt, DRAAF, Île de France) at Paris Charles de Gaulle Airport (Roissy-en-France, France). It was found in a shipment of unidentified plants of the genus *Agapanthus* L'Her. originating from South Africa (exact location unknown) ; this specimen was sent to one of us (JLJ) for identification and deposition in the MNHN collection (accession number MNHN JL350).

For next-generation sequencing of the specimen MNHN JL518 from Madagascar, a 1 cm portion was cut and sent to the Plateforme d'Analyses Génomiques of the Institut de Biologie Intégrative et des Systèmes (IBIS, Université Laval, Québec, Canada). Genomic DNA was extracted, mechanically fragmented using a Covaris M220 instrument (Covaris, Woburn, MA, USA) and a library was prepared using an NEBNext Ultra II kit (New England Biolabs, Ipswich, MA, USA) following the manufacturer's instructions. The library was then sequenced on an Element Bioscience AVITI platform (San Diego, CA, USA). The 150-bp paired-end reads were quality filtered using fastp (Chen et al. 2018), leaving a total of ca. 206 M clean reads that were assembled with SPAdes v. 4.0 and a k-mer of 125 (Bankevich et al. 2012). Once identified, the contig containing the mitochondrial genome was annotated with the help of MITOS (Donath et al. 2019) and the available reference from GenBank (MK455837).

For molecular barcoding of the specimens MNHN JL303 and MNHN JL350, the *cox1* gene was amplified by routine PCR and sequenced on a Sanger platform, as described in Justine et al. (2018). All these steps were performed at the MNHN facilities.

RESULTS

Phylum Platyhelminthes Minot, 1876
 Subphylum Rhabditophora Ehlers, 1985
 Order Tricladida Lang, 1884
 Suborder Continenticola Carranza, Littlewood, Clough, Ruiz-Trillo, Baguñà & Riutort, 1998
 Superfamily Geoplanoidea Stimpson, 1857
 Family Geoplanidae Stimpson, 1857
 Subfamily Bipaliinae von Graff, 1896
 Genus *Bipalium* Stimpson, 1857

Bipalium kewense Moseley, 1878

Figures 3-6

First report. MADAGASCAR — ANAMALANGA · Antananarivo; 18°54'08.8"S, 047°30'32.1"E; 27.III.2023; Marcel Koken & Suzelyce Eva Soavolamanoro leg.; collected in a 15 mL Falcon tube with 90% ethanol; GenBank: PQ645074; in ethanol, MNHN JL518.

Figure 4. *Bipalium kewense*, specimen MNHN JL518 fragmented into three pieces following successive attempts to collect it.



Figure 5. *Bipalium kewense*, specimen MNHN JL518, remaining anterior part of the body after a first attempt to collect it. This picture was used for identification because of its higher definition.



Figure 6. *Bipalium kewense*, specimen MNHN JL518, fragmented part exhibiting both the dorsal and ventral sides.

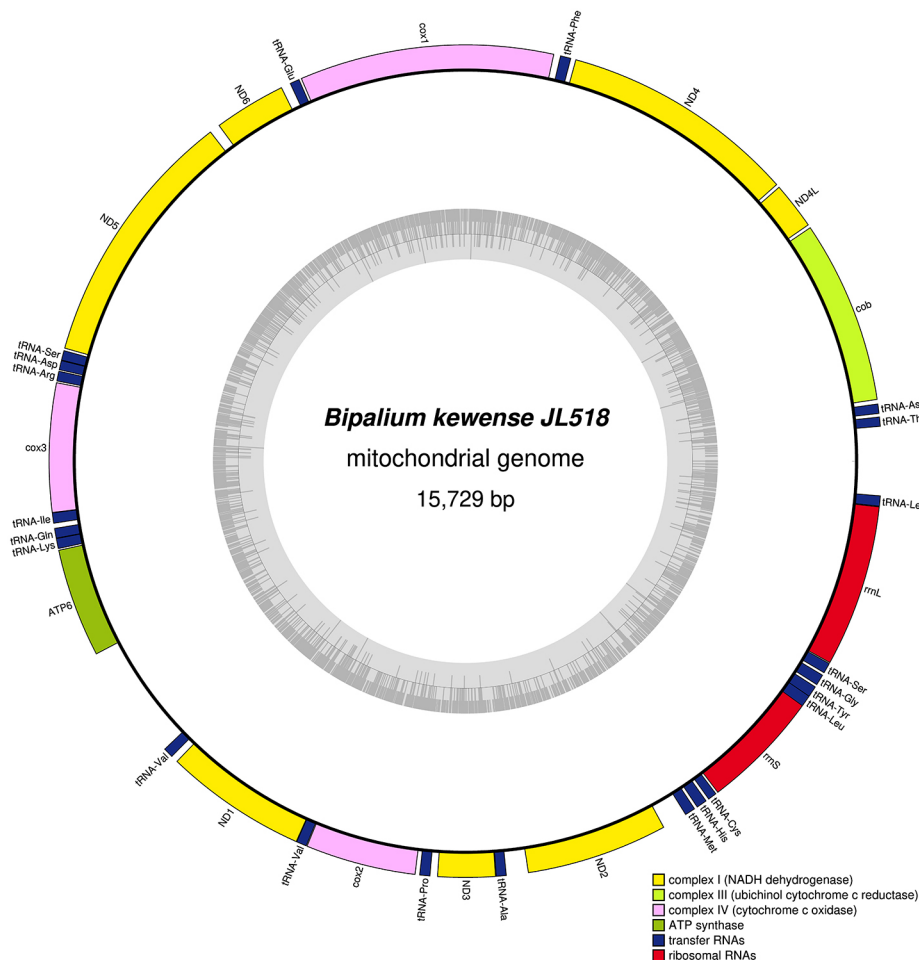


Identification. The specimen (Figure 3) initially measured approximately 24.5 cm long and 3.2 mm in maximum width, with an elongate body, slightly rounded dorsally, and tapering slightly towards the extremities. When collecting the specimen, it immediately broke into several smaller pieces (Figure 4). The black-brown semilunate headplate has slightly recurved lappets, and the posterior tip is bluntly rounded on the partial specimen used for identification (Figure 5), which is congruent with its earlier fragmentation. There are five fairly evenly spaced dorsal-dorsolateral longitudinal stripes. A fine black-brown median stripe beginning well behind the headplate thickens over the pharyngeal area and continues to the hind end. A black-brown incomplete transverse band (interrupted collar) lies immediately behind the headplate, from which the paired lateral and marginal stripes arise. The lateral nut-brown stripes have diffuse margins and are separated from the median stripe by about the same width of ivory ground colour, and from the fine paired nut-brown marginal stripes by a similar interval of brown-beige ground colour. In Figure 6 showing the fragmented specimen, the dorsal side (upper right of the photo) has dark median and paired dorsal-dorsolateral stripes, and the ventral surface (lower left of the photo) has a median, narrow, white creeping sole delineated on either side by the violet-grey longitudinal stripes. The specimen exhibited the typical external morphology of *B. kewense* and can be distinguished from similar species by the presence of an incomplete transverse band immediately behind the headplate and the five dark, fairly evenly spaced dorsal-dorsolateral longitudinal stripes that all begin at or just behind the headplate (Winsor 1983).

After assembly of the sequencing reads, it was possible to retrieve a 15,729-bp contig corresponding to the mitogenome (GenBank: PQ645074). Unlike the 15,666-bp reference sequence from GenBank (MK455837, specimen from France), it was not possible to circularize the contig, although it is being displayed as circular for easier reading (Figure 7). The contig broke in an area between genes *rrnL* and *cob*, which is now known in other Geoplanidae to harbour repeated sequences (Gastineau et al. 2024). After removal and trimming of the non-coding parts that were not shared with MK455837, only four differences were found between both sequences, out of which two concerned coding regions. One was a silent single nucleotide polymorphism in ND4, the other one an indel in *rrnL*.

The two specimens from Egypt and South Africa had identical partial *cox1* sequences, which were registered in GenBank under accession numbers PV032007 and PV032008 for specimens MNHN JL303 and MNHN JL350, respectively. Megablast queries returned a 100% identity with various *cox1* sequences of *B. kewense*, including the two complete aforementioned mitogenomes.

Figure 7. Map of the mitochondrial genome of *Bipalium kewense* MNHN JL518. The mitogenome is represented as circular for easier reading, although it could not be circularized.



DISCUSSION

Madagascar has a rich fauna of Bipaliinae, with 10 species of *Humbertium* Ogren & Sluys, 2001, and 16 species of *Diversibipalium* Kawakatsu, Ogren, Froehlich & Sasaki, 2002 (Solà et al. 2023) described so far. In terms of external morphology, *Humbertium ithorensense* Solà et al., 2023 might be confused with *B. kewense*. It has four dark dorsal longitudinal stripes (five dorsal-dorsolateral stripes in *B. kewense*), thickening of the stripes forming a dark patch on either side of the neck that continues to encircle the anterior margin of the headplate (a distinct interrupted transverse band that only extends dorsally and ventrally in *B. kewense*), with yellowish ground colour, and exhibiting on the headplate the pale “exclamation mark” at the beginning of the pale median dorsal stripe seen on many species of *Humbertium* (absent in *B. kewense*). None of the other 25 Madagascan species have a combination of external characters approaching those of *B. kewense*.

The current study represents the first confirmed occurrence of *B. kewense* in Madagascar, but it is noted that iNaturalist (2024a, 2024b) also lists two putative observations, both of which occurred in the last two years south of Antananarivo, at distances of ca. 90 km and ca. 400 km from the capital city. These observations were from either a rural area or Ranomafana National Park, and we emphasize that this species is highly likely to have widespread distribution in the central highlands. Data sharing between scientists and the general public through platforms like iNaturalist for scientists or Facebook groups can greatly assist researchers in efficiently mapping the distribution of invasive species.

The impossibility to circularize the mitogenome of specimen MNHN JL518 interrogates whether our previous sequencing (Gastineau et al. 2019) missed a repeated region, or if these repetitions are distributed unequally among specimens. Such questions might only be solved using long-read sequencing technologies (e.g. Gastineau et al. 2023, 2024), which is beyond the scope of our study. On the other hand, the strong conservation of the mitogenome, even in the non-coding parts, corroborates and strengthens previous assumptions based on the high conservation of the *cox1* gene among various specimens of *B. kewense* from Spain, the Azores, Cuba, Monaco, Portugal, Continental France, Guadeloupe, Martinique, and French Guiana (Justine et al. 2018).

Questions remain regarding the “when” and “how” of the introduction of *B. kewense* to Madagascar. As previously stated, the exact provenance is unknown for the *B. kewense* specimens from Madagascar with the NHM number V4092. However, the species had already been introduced to Madagascar in the 19th or early 20th century because V4092 had been donated before Suter’s death in 1917. It would be one of the “old” group of species introduced into European countries and their colonies by horticulturists, the main driver being the use of the “Wardian case”, invented in 1842, which facilitated the safe transport and exchange of living plants. However, this unluckily led to the inadvertent introduction of cryptic exotic animal species, including flatworms, with soil (Winsor et al. 2004). In South America and the Indo-Pacific regions, banana rhizomes have been invoked as likely passive vehicles for the inadvertent transport of land planarians (Froehlich 1955; Sluys 1995). Notably, a large proportion of the human population of Madagascar has Austronesian ancestry, with forefathers sailing from the Indo-Malay region more than 2000 years ago and introducing to the island hundreds of plants, which could have led to the simultaneous introduction of geoplanids. As stated above, there are other species of Bipaliinae observed in Madagascar (Solà et al. 2023) and on the neighbouring island of Mayotte (Justine et al. 2022). Alternatively, *B. kewense* may have been introduced more recently, in the modern era of globalized plant trade. These explanations do not exclude each other, as all could be true if there were repeated introductions over time.

The impact of plant transplantations in the dispersal of geoplanids is exemplified by specimen MNHN JL350, which could have entered the French territory in this way. This also illustrates that an invasion can occur indirectly (South-East Asia to South Africa to France) in a world of globalized exchanges. *Bipalium kewense* is a well-known species that is already well documented, but non-direct invasions would render the identification of other lesser known or even unknown terrestrial flatworms far more difficult. Clearly, this would increase the difficulty of pinpointing their area of origin, if there was any doubt concerning them. Like for Madagascar, there are records of *B. kewense* in South Africa that go back to the end of the 19th century and beginning of the 20th century (Winsor 1983), and the species now seems to be well established there (Jones 2004; Picker and Griffiths 2017). However, our record is the first with molecular confirmation.

Records of *B. kewense* in North Africa are scarce, as could be expected from places with dry climates. The presence of *B. kewense* has been noted only once in Egypt as far as we are aware (Mori et al. 2023). This observation in Egypt was in Cairo, in the north of the country, near the Nile Delta, which is the most fertile part of the country. Specimen MNHN JL303 was found in Assiut, ca. 400 km south of Cairo in Upper Egypt. This suggests that *B. kewense* might already be spreading in Egypt along the Nile. Our record is also the first with molecular confirmation for North Africa.

ACKNOWLEDGEMENTS

We thank the anonymous reviewers for their comments and help.

ADDITIONAL INFORMATION

Conflict of interest

The authors declare that no competing interests exist.

Ethical statement

All specimens were transferred from their countries of origin with due authorizations and/or permits.

Funding

This work was co-funded by the Minister of Science under the “Regional Excellence Initiative” Programme for 2024–2027 (RID/SP/0045/2024/01). Brian Boyle and Christian Otis were supported by the “Programme d’appui aux plateformes technologiques stratégiques” from the “Ministère de l’Économie, de l’Innovation et de l’Énergie, Québec”.

Author contributions

Conceptualization: RG. Investigation: RG, AR, RRR, MK, SES, CO, BB, DG, LW, JLJ. Methodology: RG, LW, JLJ. Resources: MK. Supervision: JLJ. Visualization: MK. Project administration: MK, JLJ. Writing – original draft: RG. Writing – review and editing: AR, MK, RRR, SES, CO, BB, DG, LW, JLJ.

Author ORCID iDs

Romain Gastineau  <https://orcid.org/0000-0001-8661-5118>


Andrianjaka Ravelomanana  <https://orcid.org/0000-0001-5123-9458>

Remondah Rushdy Ramzy  <https://orcid.org/0000-0003-4171-677X>

Marcel Koken  <https://orcid.org/0000-0002-0839-0125>

Christian Otis  <https://orcid.org/0000-0001-9680-5863>

Brian Boyle  <https://orcid.org/0000-0002-0158-1463>

Delphine Gey  <https://orcid.org/0000-0002-5656-1793>

Leigh Winsor  <https://orcid.org/0000-0002-6679-470X>

Jean-Lou Justine  <https://orcid.org/0000-0002-7155-4540>

Data availability

All data supporting the findings of this study are available in the main text.

REFERENCES

- Alvarez-Presas M, Mateos E, Tudó A, Jones H, Riutort M (2014) Diversity of introduced terrestrial flatworms in the Iberian Peninsula: a cautionary tale. *PeerJ* 2: e430. <https://doi.org/10.7717/peerj.430>
- Ball IR (1977) La faune terrestre de l’île Sainte-Hélène, 2. Turbellaria. *Annales du Musée Royal de l’Afrique Central (Zoologie)* 220: 492–511.
- Bankevich A, Nurk S, Antipov D, Gurevich AA, Dvorkin M, Kulikov A, Lesin VM, Nikolenko SI, Pham S, Prjibelski A, Pyshkin AV, Sirotkin AV, Vyahhi N, Tesler G, Alekseyev MA, Pevzner PA (2012) SPAdes: a new genome assembly algorithm and its applications to single-cell sequencing. *Journal of Computational Biology* 19: 455–477. <https://doi.org/10.1089/cmb.2012.0021>
- Carbayo F, Álvarez-Presas M, Jones HD, Riutort M (2016) The true identity of *Obama* (Platyhelminthes: Geoplanidae) flatworm spreading across Europe. *Zoological Journal of the Linnean Society* 177: 5–28. <https://doi.org/10.1111/zoj.12358>
- Chen S, Zhou Y, Chen Y, Gu J (2018) fastp: an ultra-fast all-in-one FASTQ preprocessor. *Bioinformatics* 34 (17): i884–i890. <https://doi.org/10.1093/bioinformatics/bty560>
- Cilia DP (2024) On the occurrence of the invasive terrestrial flatworm *Obama nungara* Carbayo, Álvarez-Presas, Jones & Riutort, 2016 (*Platyhelminthes Geoplanidae*) in the Maltese islands. *Il Naturalista Siciliano* 48 (1): 35–40. <https://doi.org/10.5281/zenodo.12075407>
- de Beauchamp P (1939) Planaires terrestres de l’Indochine française récoltées par M. C. Dawydoff. *Mémoires du Museum National d’Histoire Naturelle* 10: 300–337.
- de Beauchamp P (1948) Les turbellaries de Madagascar. *Mémoires de l’Institut Scientifique de Madagascar Series A* 1 (2): 147–149.
- de Luna M, Boll PK (2023) An annotated checklist of terrestrial flatworms (Platyhelminthes: Tricladida: Geoplanidae) from Mexico, with new records of invasive species from a citizen science platform and a new nomen dubium. *Zootaxa* 5297 (4): 518–532. <https://doi.org/10.11646/zootaxa.5297.4.3>
- Luna M, García-Barríos R, Valle P, Boll PK (2022) New records of invasive hammerhead flatworms (Platyhelminthes, Geoplanidae, Bipaliinae) from Mexico using a citizen science platform, with an identification key to the species found in North America. *Check List* 18 (5): 925–935. <https://doi.org/10.15560/18.5.925>
- Donath A, Jühling F, Al-Arab M, Bernhart SH, Reinhardt F, Stadler PF, Middendorf M, Bernt M (2019) Improved annotation of protein-coding genes boundaries in metazoan mitochondrial genomes. *Nucleic acids research* 47 (20): 10543–10552. <https://doi.org/10.1093/nar/gkz833>
- European Commission: Directorate-General for Environment (2022) Study on invasive alien species: development of risk assessments to tackle priority species and enhance prevention: final report. Publications Office of the European Union, Brussels, Belgium, 209 pp. <https://data.europa.eu/doi/10.2779/5726>. Accessed on: 2025-2-25.
- Fisk GHR (1889) Extract from a letter containing remarks upon *Bipalium kewense*. *Proceedings of the Zoological Society of London* 1889: 586.
- Froehlich CG (1955) Sobre morfologia e taxonomia das Geoplanidae. *Boletim da Faculdade de Filosofia, Ciências e Letras, Universidade de São Paulo* 19: 197–251.

- Gastineau R, Justine JL, Lemieux C, Turmel M, Witkowski A (2019) Complete mitogenome of the giant invasive hammerhead flatworm *Bipalium kewense*. Mitochondrial DNA, Part B, Resources 4 (1): 1343–1344. <https://doi.org/10.1080/23802359.2019.1596768>
- Gastineau R, Otis C, Boyle B, Lemieux C, Turmel M, St-Cyr J, Koken M (2023) The mitochondrial genome of the bioluminescent fish *Malacosteus niger* Ayres, 1848 (Stomiidae, Actinopterygii) is large and complex, and contains an inverted-repeat structure. ZooKeys 1157: 177–191. <https://doi.org/10.3897/zookeys.1157.97921>
- Gastineau R, Lemieux C, Turmel M, Otis C, Boyle B, Coulis M, Gouraud C, Boag B, Murchie AK, Winsor L, Justine JL (2024) The invasive land flatworm *Arthurdendyus triangulatus* has repeated sequences in the mitogenome, extra-long *cox2* gene and paralogous nuclear rRNA clusters. Scientific reports 14 (1): 7840. <https://doi.org/10.1038/s41598-024-58600-y>
- Geba J. (1909) Landplanarien von Madagaskar und den Comoren. In: Voeltzkow A (Ed.) Reise in Ostafrika in den Jahren 1903–1905 : mit Mitteln der Hermann und Elise geb. Heckmann Wentzel-Stiftung : Wissenschaftliche Ergebnisse, Volume 2, Issue 4. E. Schweizerbartsche Verlagsbuchhandlung, Stuttgart, Germany, 379–398.
- Graff LV (1899) Monographie der Turbellarien. Engelmann, Leipzig, Germany, 574 pp. <https://doi.org/10.18452/58>
- Hyde P (2017) A colonial naturalist—Henry Suter’s life of discovery and hardship in New Zealand. Sphenodon, Eastbourne, New Zealand, 300 pp.
- Hyman L (1943) Endemic and exotic land planarians in the United States with a discussion of necessary changes in the Rhynchodemidae. American Museum Novitates 1241: 1–21.
- iNaturalist (2024a) *Bipalium kewense*. iNaturalist. <https://www.inaturalist.org/observations/217078751>. Accessed on: 2025-2-25.
- iNaturalist (2024b) *Bipalium kewense*. iNaturalist. <https://www.inaturalist.org/observations/203002580>. Accessed on: 2025-2-25.
- iNaturalist (2025a) *Bipalium kewense*. iNaturalist. <https://inaturalist.ala.org.au/observations/135218705>. Accessed on: 2025-4-10.
- iNaturalist (2025b) *Bipalium kewense*. <https://inaturalist.ala.org.au/observations/26957711>. Accessed on: 2025-4-10.
- Jones HD (2004) A new species of land planarian (Platyhelminthes: Tricladida: Terricola: Rhynchodemidae) from South Africa, with a list of African terrestrial planarian species. African Zoology 39 (1): 31–40. <https://doi.org/10.1080/15627020.2004.11407283>
- Justine JL, Gastineau R, Winsor L (2024) Land flatworms (Geoplanidae) in France and French overseas territories: ten years of research. Zoologia 41: e24004. <https://doi.org/10.1590/S1984-4689.v41.e24004>
- Justine JL, Winsor L, Gey D, Gros P, Thévenot J (2018) Giant worms *chez moi!* Hammerhead flatworms (Platyhelminthes, Geoplanidae, *Bipalium* spp., *Diversibipalium* spp.) in metropolitan France and overseas French territories. PeerJ 6: e4672. <https://doi.org/10.7717/peerj.4672>
- Justine JL, Gastineau R, Gros P, Gey D, Ruzzier E, Charles L, Winsor L (2022) Hammerhead flatworms (Platyhelminthes, Geoplanidae, Bipaliinae): mitochondrial genomes and description of two new species from France, Italy, and Mayotte. PeerJ 10: e12725. <https://doi.org/10.7717/peerj.12725>
- Luther A (1956) Turbellaria Tricladida von der Cap Verde-Inseln. Finska vetenskaps Societen, Commentationes Biologicae 15: 1–9.
- Mateos E, Jones HD, Riutort M, Álvarez-Presas M (2020) A new species of alien terrestrial planarian in Spain: *Caenoplana decolorata*. PeerJ 8: e10013. <https://doi.org/10.7717/peerj.10013>
- Mell C (1904) Die Landplanarien der Madagassischen Subregion. Abhandlungen der Senckenbergischen Gesellschaft 239: 193–236
- Mori E, Scotti R, Grano M (2024) First record of the hammer-headed garden worm *Bipalium kewense* Moseley, 1878 (Tricladida Geoplanidae) in Ischia (Campania, Italy). Biodiversity Journal 15 (1): 53–57. <https://doi.org/10.31396/Biodiv.Jour.2024.15.1.53.57>
- Mori E, Touloupakis E, Viviano A, Mazza G (2023) Opening a gate to shade some light: alien land planarians in the Eastern Mediterranean and Northern Africa. Zootaxa 5319: 295–300. <http://doi.org/10.11646/zootaxa.5319.2.12>
- Murchie AK, Gordon AW (2013) The impact of the ‘New Zealand flatworm’, *Arthurdendyus triangulatus*, on earthworm populations in the field. Biological Invasions 15: 569–586. <https://doi.org/10.1007/s10530-012-0309-7>
- Nicolosi G, Galimberti A, Tommasi N, Isaia M (2025) The invasive tropical planaria *Bipalium kewense* invades urban subterranean habitats in the city of Catania (Sicily, Italy). Biological Invasions 27: 24. <https://doi.org/10.1007/s10530-024-03493-1>
- Ogren RE, Kawakatsu MN, Froehlich EM (1992) Additions and corrections of the previous land planarian indices of the world (Turbellaria, Tricladida, Terricola). Bulletin of the Fuji Womens’ College 30: 50–103.
- Picker MD, Griffiths CL (2017) Alien animals in South Africa—composition, introduction history, origins and distribution patterns. Bothalia 47 (2): a2147. <https://doi.org/10.4102/abc.v47i2.2147>
- Sluys R (1995) Platyhelminthes as paleogeographical indicators. Hydrobiologia 305: 49–53. <https://doi.org/10.1007/bf00036362>
- Sluys R (2016) Invasion of the flatworms. American Scientist 104 (5): 288–295.
- Solà E, Sluys R, Riutort M, Kawakatsu M (2023) Molecular phylogenetics facilitates the first historical biogeographic analysis of the hammerhead worms (Platyhelminthes: Tricladida: Bipaliinae), with the description of twelve new species and two new genera. Zootaxa 5335 (1): 1–77. <https://doi.org/10.11646/zootaxa.5335.1.1>
- Trimen R (1887) *Bipalium kewense* at the Cape. Proceedings of the Zoological Society of London 1887: 548–550.
- Winsor L (1983) A revision of the cosmopolitan land planarian *Bipalium kewense* Moseley, 1878 (Turbellaria: Tricladida: Terricola). Zoological Journal of the Linnean Society 79: 61–100. <https://doi.org/10.1111/j.1096-3642.1983.tb01161.x>
- Winsor L, Johns P, Barker GM (2004) Terrestrial planarians (Platyhelminthes: Tricladida: Terricola) predaceous on terrestrial gastropods. In: Barker GM (Ed.) Natural enemies of terrestrial molluscs. CABI, Wallington, UK, 227–278. <https://doi.org/10.1079/9780851993195.0227>