

Water Resources Research



RESEARCH ARTICLE

10.1029/2022WR033819

Identifying Regime Transitions for Water Governance in the Yellow River Basin, China

Key Points:

- An integrated water governance index was devised to identify regime shifts in water governance practices
- The study interprets the transformation of water governance within a rapidly evolving large river basin—the Yellow River Basin
- A novel approach was developed to analyze interconnections between water governance, hydrosocial transition, and human-water relationships

Supporting Information:

Supporting Information may be found in the online version of this article.

Correspondence to:

S. Wang,
shuaiwang@bnu.edu.cn

Citation:

Song, S., Wang, S., Wu, X., Wei, Y., Cumming, G. S., Qin, Y., et al. (2023). Identifying regime transitions for water governance in the Yellow River Basin, China. *Water Resources Research*, 59, e2022WR033819. <https://doi.org/10.1029/2022WR033819>

Received 4 OCT 2022
Accepted 15 NOV 2023

Author Contributions:

Conceptualization: Shuang Song, Yongping Wei, Graeme S. Cumming
Formal analysis: Shuang Song
Funding acquisition: Bojie Fu
Methodology: Shuang Song, Xutong Wu
Project Administration: Bojie Fu
Resources: Shuai Wang
Supervision: Shuai Wang, Bojie Fu
Visualization: Shuang Song, Graeme S. Cumming, Xilin Wu
Writing – original draft: Shuang Song, Xutong Wu

Shuang Song¹ , Shuai Wang¹ , Xutong Wu¹ , Yongping Wei² , Graeme S. Cumming^{3,4}, Yue Qin⁵, Xilin Wu⁶, and Bojie Fu^{1,6}

¹State Key Laboratory of Earth Surface Processes and Resource Ecology, Beijing Normal University, Beijing, China, ²School of Earth and Environmental Sciences, The University of Queensland, Brisbane, QLD, Australia, ³ARC Centre of Excellence for Coral Reef Studies, James Cook University, Townsville, QLD, Australia, ⁴Now at Oceans Institute, University of Western Australia, Perth, WA, Australia, ⁵College of Environmental Sciences and Engineering, Peking University, Beijing, China, ⁶State Key Laboratory of Urban and Regional Ecology, Research Center for Eco-Environmental Sciences, Chinese Academy of Sciences, Beijing, China

Abstract Water governance determines “who gets water, when, and how” in most large river basins. Shifts in water governance regimes from natural to social-ecological or “hydrosocial” carry profound implications for human wellbeing; identifying regime changes in water governance is critical to navigating social-ecological transitions and guiding sustainability. We characterized water governance along with the three main aspects—stress, purpose, and allocation—to develop a quantitative integrated water governance index (IWGI) at a basin scale. Applying the IWGI to the rapidly changing Yellow River Basin (YRB) in China clarifies shifts in water governance between massive supply, transformation governance, and adaptation-oriented regimes. In the YRB, the underlying causes of regime shifts were increasing water supply and demand before the governance transformation and re-allocation and regulation after the change. The IWGI offers a comprehensive and straightforward approach to linking water governance regimes to sustainability, providing valuable insights into hydrosocial transitions.

Plain Language Summary Missing governance means missing sustainability. However, the lack of a comprehensive but straightforward approach to identifying the changes in water governance presents a challenge for efforts to underpin it. Therefore, we choose indicators for the corresponding aspects (water stress, water services purpose, and water allocation) and combine them into an integrated water governance index to analyze long-term changes in a large river basin.

1. Introduction

Water, being “at the center of the planetary drama of the Anthropocene,” is essential not only for Earth system processes but also in supporting development and human well-being (Gleeson et al., 2020a, 2020b). As an integral part of earth system governance, successful water governance requires a deep understanding of changes in the complex relationships between humans and water (Ahlström et al., 2021; Biermann et al., 2012; Steffen et al., 2020). Human activities stemming from our reliance on water have profoundly modified the natural water cycle, resulting in rivers that are dominated by a hybrid of social and natural drivers (Abbott et al., 2019; D. Qin et al., 2014; Sivapalan et al., 2012). Facing transitions from natural to human-dominated regimes, many big river basins worldwide (which are hot spots of civilization and economic growth) are urgently in need of more effective water governance (Best, 2019; Di Baldassarre et al., 2019).

Water governance encompasses the political, social, economic, and administrative systems that regulate water use and management, dictating “who gets water, when and how” (Allan, 2001; Lasswell, 2018). In this context, the United Nations Development Program suggests that water governance determines water usage across three core aspects: “When and what water to use?” (stress), “How does water provide different services for human well-being?” (purpose), and “Who can use water equally and efficiently?” (allocation) (Jacobson et al., 2013). Research into index-based water governance assessment generally falls into two categories: those that focus on water systems, and those that concentrate on governance systems. On one hand, studies on governance systems typically employ a qualitative assessment to demonstrate what practices influence water governance, for example, the OECD framework (OECD, 2018). For quantitative studies, due to the lack of comprehensive and detailed information on key components for water governance assessment, these studies often resort to proxy data sets of

© 2023. The Authors.

This is an open access article under the terms of the [Creative Commons Attribution-NonCommercial-NoDerivs License](https://creativecommons.org/licenses/by/4.0/), which permits use and distribution in any medium, provided the original work is properly cited, the use is non-commercial and no modifications or adaptations are made.

Writing – review & editing: Shuai Wang, Xutong Wu, Yongping Wei, Graeme S. Cumming, Yue Qin, Xilin Wu

human activities to create simpler indices (Huggins et al., 2022; Varis et al., 2019). On the other hand, studies focusing on water systems utilize intuitive indices to encapsulate the outcomes of governance. For example, measures of water stress have incorporated human regulation step by step. Specifically, the traditional water stress index only includes demand and supply (Gleick, 1996), and the water scarcity index uses storage (Damkjaer & Taylor, 2017), and the even more integrated SFV-index includes flexibility (Y. Qin et al., 2019). Despite their usefulness, these water stress indices tend not to provide a comprehensive characterization of water governance, as they overlook the social aspect of water usage, that is, the purpose and allocation of water use. As a solution, we propose an integrated water governance index (IWGI) that factors in regional water use allocations and sectoral water use purpose, thereby offering a more comprehensive quantification of governance outcomes.

The impetus for developing this new index lies in the evolving practices of water governance driven by a blend of social and natural influences. First, climate change impacts on current water yield, coupled with escalating demands from economic activities and the need for water storage development, intensify water stress (Huang et al., 2021; Y. Qin et al., 2019; Wada et al., 2014). Second, the purpose of water in serving human well-being is witnessing a shift in trade-offs. The balance between provisioning uses (such as drinking water and food production) and non-provisioning uses (like energy production) is tilting, reflecting changes in societal needs and values (Flörke et al., 2018; Jaeger et al., 2019; J. Liu et al., 2017). Third, the allocation of water across a basin is not solely determined by regional socio-economic and environmental contexts but is also increasingly influenced by systematic regulations (Schmandt & Kibaroglu, 2021; Speed & Asian Development Bank, 2013). As we transition toward a human-dominated regime, these three interlinked aspects—stress, purpose, and allocation, are undergoing substantial changes. Assessing them separately could lead to systematic failures in water governance, highlighting the need for a more integrated approach to evaluating water governance practices.

A critical step in understanding the successes and failures of water governance is to identify the different regimes that underpin it (Grafton et al., 2013; Kjellén et al., 2015). Regimes of water governance, the general guidelines of governing practices, arise within linked human-water systems (based on management, institutions, and exploitation) to create local equilibria in social-ecological structures and functions (Bressers & Kuks, 2013; Falkenmark & Wang-Erlandsson, 2021; Loch et al., 2020; Pahl-Wostl, 2007). For example, under a human-dominated regime, reservoirs make water stress easier to alleviate because of flexibility; growing energy and industrial demands make water services purposes lopsided to non-provisioning sectors; conveyance systems make water allocation more planned (Figure 1a) However, the lack of a comprehensive but straightforward approach to identifying changes in water governance regimes represents a challenge for efforts to enhance the sustainability of water resource use. Filling this gap, which is the aim of this paper, is essential for the appropriate alignment of human and water systems.

The Yellow River Basin (YRB), which contains the fifth-largest and most sediment-rich river in the world, needs integrated water governance because of geological and human history (Best, 2019; Mostern & Horne, 2021; Wu et al., 2020). Since the 1960s, governance practices such as reservoirs, levees, and conservation measures have contained the issues troubled by thousands of years of high sediment loads (S. Song et al., 2020; S. Wang et al., 2016). However, new challenges such as decreased streamflows and water depletions occurred in more recent times, followed by different water governance practices like water use regulation and water transfer across basins (S. Wang et al., 2019). Today, it is still impossible to completely solve water stress, trade-offs between ecosystem services, or lopsided development in different regions in the YRB to the satisfaction of all actors (Wohlfart et al., 2016). Governance challenges induced by environmental, economic, social, and political factors have resulted in YRB being among the most intensively—governed large river basins worldwide (Nickum & Shaofeng, 2021). Identifying regime shifts in water governance within the YRB can thus provide crucial insights into rapidly changing big river basins and how governance may respond to meeting challenges to their sustainability.

Here, we depict three aspects of water governance—stress, purpose, and allocation with corresponding indicators (see Section 2) and thus develop an IWGI by equally weighting them, to indicate results from water governance (see Figure 1b). Then, by applying the index to a typical rapid-changing big river basin (the YRB), we show how IWGI helps detect and describe complicated water governance regimes comprehensively but straightforwardly. Following synthetic analyses of the changes in water demand, supply, economic outcomes, and institutions, we interpret the leading causes of the regime shifts. Finally, we propose a general regime transition schema that offers a practical guideline for a coordinated approach to exploring the challenges faced by big river basin governance.

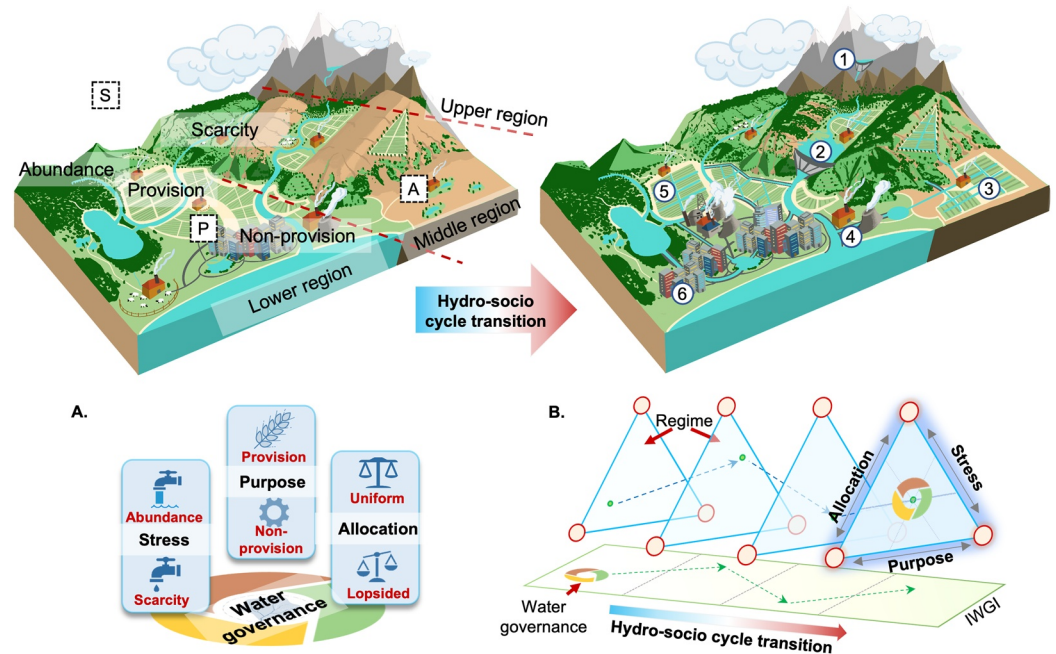


Figure 1. (a) Identifying the water governance regimes in transitions of a hydrosocial cycle with an integrated water governance index (IWGI). Water stress (S), purposes of water services (P), and water allocation (A) are three aspects to be considered. For example, reservoir construction (① and ②) can relieve local water stress; The development of intensive irrigated agriculture (③) and growth of energy industrial demand (④) will change the purpose of water use; The water delivery system controls water allocation (⑤ and ⑥) within the basin system. (b) Therefore, the method combines aspects of three related indicators so that an abrupt change of the IWGI can indicate a regime shift in water governance.

2. Materials and Methods

To develop a comprehensive and straightforward approach to identifying water governance regimes. First, we constructed the IWGI based on three aspects (stress, purpose, and allocation, see Figure 1). Then, we analyzed the changes in the IWGI from 1965 to 2013 using change point detection methods. The normalized indicator for each dimension affects the IWGI by changing trends and contributions.

2.1. Integrated Water Governance Index (IWGI)

As shown in the framework Figure 1, the IWGI combines the three aspects (stress, purpose, and allocation) of water governance:

$$\text{Transformation} \propto S * P * A \tag{1}$$

We selected an indicator (I_x , $x = S, P$, or A , corresponding to stress, purpose, and allocation, respectively) to quantify the aspects effectively. Then, the above equation was transformed into a natural logarithm to facilitate calculation:

$$\text{Transformation} \propto \ln(I_S) + \ln(I_P) + \ln(I_A) \tag{2}$$

Then, the IWGI is an average of the normalized indicators I'_x :

$$\text{IWGI} = (I'_S + I'_P + I'_A) / 3 \tag{3}$$

where I'_x is calculated by min-max normalization of I_x (thus ranges from zero to one):

$$I'_x = (I_x - I_{x,\min}) / (I_{x,\max} - I_{x,\min}) \tag{4}$$

Since the IWGI essentially comprises by three aspects' indicator with same weights, its prerequisite is to keep the same data source for each indicator throughout time, to ensure time series continuity. However, various data

sources can be used when estimating the specific indicator or cross different indicators, which makes IWGI a flexible framework for substituted indicators.

2.1.1. Indicator of Stress (IS)

We used the scarcity-flexibility-variability (SFV) water stress index proposed by Y. Qin et al. (2019) to evaluate water stress. This indicator integrates the share of runoff being consumed, the share of consumption in these inflexible categories, and the historical variability of runoff weighted by storage capacity (Y. Qin et al., 2019), where impacts from both management measures and climate changes are included. The SFV-index, which has many applications, is the most comprehensive index of water stress we know (Y. Qin et al., 2019).

Based on the hydrological and economic context of YRB, four second-level regions are divided (Source Region, Upper Region, Middle Region, and Lower Region, see Text S1 in Supporting Information S1). For the whole YRB, the indicator of water stress I_S is the average of all regions' SFV-index:

$$I_S = \frac{1}{4} * \sum_{i=1}^4 SFV_i \quad (5)$$

where SFV_i is the SFV index of region i . By taking water flexibility and variability into account, the SFV focuses more on dynamic responses to water resources in a developing perspective, which is a valid metric of temporal changes in water stresses (Y. Qin et al., 2019). To apply this method, we need to combine three metrics: scarcity, flexibility, and variability. In all the equations following, $R_{i,avg}$ is the average runoff in region i , RC_i is the total storage capacities of reservoirs in the region i , $R_{i,std}$ is the standard deviation of runoff in the region i .

First, for scarcity, $A_{i,j}$ is the total water use as a proportion of regional multiyear average runoff volume in year j and region i (in this study, four regions in the YRB, Text S1 in Supporting Information S1):

$$A_{i,j} = \frac{WU_{i,j}}{R_{i,avg}} \quad (6)$$

Second, for flexibility, $B_{i,j}$ is the inflexible water use $WU_{inflexible}$ (i.e., for thermal power plants or humans and livestock) as a proportion of average multiyear runoff, in year i and region j :

$$B_{i,j} = \frac{WU_{i,j,inflexible}}{R_{i,avg}} \quad (7)$$

Finally, for variability, the capacity of the reservoir and the positive effects of storage on natural runoff fluctuations are also considered.

$$C_i = C1_i * (1 - C2_i) \quad (8)$$

$$C1_{i,j} = \frac{R_{i,std}}{R_{i,avg}} \quad (9)$$

$$C2_i = \frac{RC_i}{R_{i,avg}}, \text{ if } RC < R_{i,avg} \quad (10)$$

$$C2_i = 1, \text{ if } RC \geq R_{i,avg} \quad (11)$$

Finally, assuming three metrics (scarcity, flexibility, and variability) have the same weights, we can calculate the SFV index after normalizing them:

$$V = \frac{A_{normalize} + B_{normalize} + C_{normalize}}{3} \quad (12)$$

$$a = \frac{1}{V_{max} - V_{min}}; \quad (13)$$

$$b = \frac{1}{V_{min} - V_{max}} * V_{min} \quad (14)$$

$$SFV = a * V + b \quad (15)$$

2.1.2. Indicator of Purpose (IP)

To quantify purpose I_p , we used provisioning purpose shares (PPSs) of water use as an indicator. While provisioning purpose water use (WU_{pro}) includes domestic, irrigated, and livestock water uses, non-provisioning purpose water use ($WU_{non-pro}$) includes industrial and urban services water uses. We calculated the PPS by:

$$PPS = \frac{WU_{pro}}{WU_{pro} + WU_{non-pro}} \quad (16)$$

In this study, we consider livestock water use, rural and urban domestic water use, and agricultural water use as provisioning water because they directly serve for survival. Others are non-provisioning: services and industrial water use because they mainly service the economy.

2.1.3. Indicator of Allocations (IA)

To describe allocations I_A , we designed an indicator based on entropy, called allocation entropy metric (AEM), which measures the degree of evenness in water allocation:

$$I_A = AEM = \sum_{i=1}^N -\log(p_i) * p_i \quad (17)$$

where p_i is the proportion of regional water use in i to water use of the whole basin (here, $N = 4$ considering divided regions in the YRB, see Supporting Information S1).

2.2. Change Points Detection

We applied the Pettitt (1979) approach to detect change-points of IWGI within continuous data, since this method has no assumptions about the distribution of the data (Pettitt, 1979). It tests H_0 : The variables follow one or more distributions with the exact location parameter (no change) against the alternative: a change point exists. Mathematically, when a sequence of random variables is divided into two segments represented by x_1, x_1, \dots, x_{t_0} and $x_{t_0+1}, x_{t_0+2}, \dots, x_T$, if each segment has a common distribution function, that is, $F_1(x)$, $F_2(x)$ and $F_1(x) \neq F_2(x)$, then the change point is identified at t_0 . To achieve the identification of change point, a statistical index $U_{i,T}$ is defined as follows:

$$U_{i,T} = \sum_{i=1}^t \sum_{j=t+1}^T \text{sgn}(X_i - X_j), 1 \leq t < T \quad (18)$$

where:

$$\text{sgn}(\theta) = \begin{cases} 1 & \text{if } \theta > 0 \\ 0 & \text{if } \theta = 0 \\ -1 & \text{if } \theta < 0 \end{cases} \quad (19)$$

The most probable change point τ is found where its value satisfies $K_\tau = \max |U_{i,T}|$ and the significance probability associated with value K_τ is approximately evaluated as:

$$p = 2 \exp\left(\frac{-6K_\tau^2}{T^2 + T^3}\right) \quad (20)$$

Given a certain significance level α , if $p < \alpha$, we reject the null hypothesis and conclude that x_τ is a significant change point at level α .

For robustness, we tried different change points detection methodologies (Bai, 1997; Keogh et al., 2001; Killick et al., 2012; Matteson & James, 2014) and the results are close (see Text S4 and Table S2 in Supporting Information S1). We used $\alpha = 0.001$ as the threshold level of the p value, meaning that the probability of a statistically

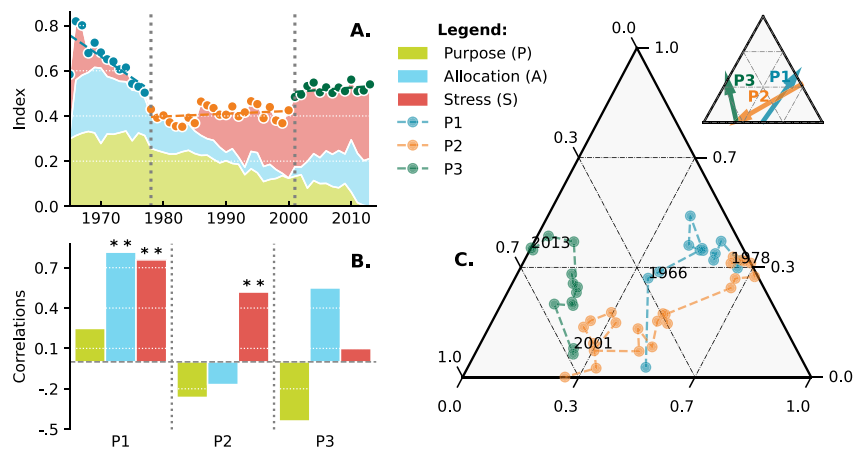


Figure 2. Changes in the Integrated Water Governance Index (IWGI) and corresponding water governance regimes: P1: 1965–1978, P2: 1979–2001, and P3: 2002–2013. (a) Detecting change points of IWGI and contributions from each indicator. Two significant change points ($p < 0.001$) occurred in 1978 and 2001. (b) Correlation of trends between the IWGI and the indicators. (c) Across the three indicators, directions of change of the components of the IWGI shift between different governance regimes.

significant change-point judgment being valid was more than 99.9%. We divided the series into two at that point and analyzed each series separately until all significant change points were detected. Though two break points in the main text with $\alpha = 0.001$, the threshold from 0.0005 to 0.05 does not affect our results, and the change points we identified are robust (see Figure S6 in Supporting Information S1).

2.3. Data Sets

For calculating IWGI, three data sets were used: reservoirs, measured runoff, and water uses. The reservoir data set was collected by S. Wang et al. (2019), which introduced includes the significant new reservoirs built in the YRB since 1956. Among all the reservoirs, YRCC labeled the “major reservoirs” which were constructed mainly for regulating and managing (see <http://www.yrcc.gov.cn/hhyl/sngc/>). In addition, annual measured runoff data was collected from the Yellow River Sediment Bulletin (<http://www.yrcc.gov.cn/nishagonggao/>) and four controlling stations are measuring different reaches of the Yellow River (see Text S1 in Supporting Information S1). The water resources use data set was from National Long-term Water Use Data Set of China (NLWUD) published by Zhou et al. (2020), which includes water uses, water-consuming economic variables, and water use intensities by sectors at the prefectures level. We determined the prefectures belong to the YRB by filtering the NLWUD data set with a threshold of 95% intersected area.

For analyzing its causes of changing water, irrigated area, gross added values of industry and services, and water use intensities data were also from NLWUD data set (Zhou et al., 2020). Besides, two water governance policies data sets are used: laws data and “big events” documents data set. Data of laws were collected from Yellow River Water Conservancy Commission (2010), which reviewed all important laws at the basin scale related to the Yellow River from the last century. The original documents of “big events” related to the Yellow River come from the YRCC, the agency at the basin scale, which recorded and compiled these events (<http://www.yrcc.gov.cn/hhyl/hhjs/>).

Finally, we calculated the IWGI from 2001 to 2017 (the latest) in the Text S4 in Supporting Information S1 for robustness test with another water use data set from Yellow River Water Resources Bulletin (<http://www.yrcc.gov.cn/zwzc/gzgb/gb/szygb/>).

3. Results

3.1. Water Governance Regimes

Two significant change points divide the changes in the IWGI into three periods, with different contributions from three aspects (Figure 2a). In the first period (P1, 1965–1978), the IWGI decreased rapidly. While the indicator

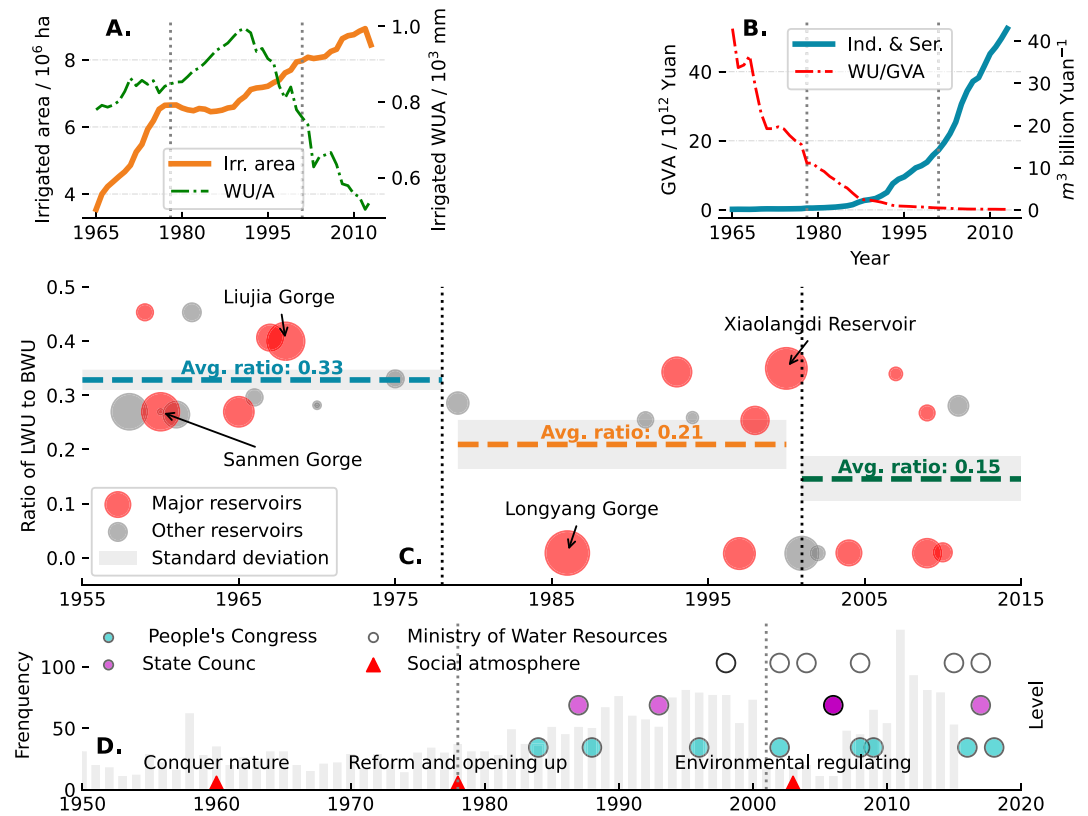


Figure 3. Causes of water governance regime shifts in the Yellow River Basin (YRB). (a) Changes in the total irrigated area (orange line) and water use intensity (WU/A, water use divided by the irrigated area, the green dot line). (b) Changes in gross values added (GVA) of industry and services (blue line) and their water use intensities (WU/GVA WU divided by the GVA, the red dot line). (c) Completed time of each new reservoir and their located region's water use (LWU) percentages as a proportion of the total basinal water use (BWU) at that time. Dashed lines denote the average of these percentages in different regimes. Red circles (major reservoirs) denote the reservoirs mainly for managing and regulating the whole basin. The size of each circle indicates the magnitude of its water storage capacity. (d) Social atmosphere* (red triangles) and national-level governance policies (the circles, different colors denote signed by different state agencies). The light gray bars count official documents related to the YRB on a basinal scale (the Yellow River Events). *Here, “social atmosphere” refers to the sociocultural context in which people live or in which something happens, including the culture that the individual was educated or lives.

of purpose (IP) and allocation contributed more to the IWGI (49.45% and 34.95% on average, respectively), the remarkable downward trend correlates significantly ($p < 0.01$) to the decreasing allocation and stress indicators (Figure 2b). In the second period (P2, 1979–2001), the increasing stress indicator significantly ($p < 0.01$) contributed to the upward IWGI, while the allocation and purpose indicators played negative roles in changing the IWGI. During the third period (P3, 1995–2013), while the stress indicator kept its most prominent share in contributions (57.11% on average), the increased allocation indicator and decreased purpose indicator changed the regime. Taken together, the overall features of the three aspects in different periods are relative to a directional change in the combination of three aspects (Figure 2c).

3.2. Causes of the Regime Shifts

The underlying causes of changes in the IWGI are different in the two regime shifts. Changing water demands and supply were critical to the shift between P1 and P2. As the dominant water demand during the P1, the area of irrigated agriculture in the YRB expanded rapidly at a rate of 0.25×10^6 ha/yr (Figure 3a), simultaneously supported by increasing supply through the construction of reservoirs. Ensuing the P2, however, the expansion of irrigated areas slowed down, and industry and services gradually took off (Figures 3a and 3b). Then, the efficiency of water use changed obviously from P2 to P3. Not only did irrigated areas continue to expand slowly during the P3 (Figure 3a), but industry and urban services also assumed a more vital economic role (represented by gross added

Table 1
Brief Summary of Regime Transitions for Water Governance at the Yellow River Basin

Time	Closet social atmosphere ^a	Regime	Main trait
1965–1978	1960s: conquering nature	Massive supply regime	Boost water supply for services (mainly provisioning purposes then—livestock and crops) by constructing reservoirs and channels
1979–2001	1978: reform and opening-up	Governance transforming regime	Triggered institutional changes for rapid enhancement of overall social adaptive capacity to severe water stresses
2002–2013	2002: environmental regulating	Adaptation-oriented regime	Adapting to stable high water stress with trade-offs between water-dependent regions and sectors

^aHere, social atmosphere refers to the sociocultural context in which people live or in which something happens, including the culture that the individual was educated or lives.

values) (Figure 3b). Because of increased efficiency, however, they both experienced significant declines in water use for a unit irrigated area or unit production (Figures 3a and 3b). As a result, the differences between sectors and regions in water use reduced while the total water stress steadily remained high during the P3 (Figure 2a).

Environmental and social contexts, governance policies played roles in all three periods. We calculated the ratios of regional and basinal water use for each reservoir (R/B ratio) (Figure 3c), with a higher ratio representing a potential role in water supply rather than basinal regulations. Under the banner of “conquering nature” most of the reservoirs were built in regions with high water demands during the P1 (R/B ratios were significantly higher [$p < 0.01$, see Figure 3c]). Ensuing the P2, the number of new reservoirs decreased but boosted their role in water regulating and management (more red circles in Figure 3c, and larger water conveyance variability in Figure S8 in Supporting Information S1). Basin policies significantly increased, rigorously controlled the allocation of water (Figure 3d, $p < 0.01$). During the P3, authorities proposed more national-level water governance policies under the guidance of the national strategy “environmental regulation” (Figure 3d). The regime shift from P1 to P2 is in line with the increasing water supply and demands; while driven by regulatory policies and efficiency enhancement under stable water stress from P2 to P3.

4. Discussion

Water governance gradually develops into a national or international concern from a primarily local concern because large river basins are critical sources of ecosystem services, economic development, and human well-being (Best, 2019; Best & Darby, 2020). As tele-coupling raises additional water governance challenges in an increasingly tightly connected world, regime shifts in water governance align with different human-water relationships (Díaz et al., 2019). The process echoes how societies have been proposed to change governance practices by enhancing their adaptive capacity in the hydrosocial cycle (Loch et al., 2020; Turton, 1999), and the IWGI quantitatively identifies this transition. It is vital for scientists and decision-makers to recognize the changing governance challenges because models, institutions, engineering, and approaches developed under one regime are not necessarily applicable under a different regime (Reyers et al., 2018).

In the case of the YRB, our results show that there have been three distinct governance regimes; we named them a massive supply regime (P1: 1965–1978), a governance transforming regime (P2: 1979–2001), and an adaptation oriented regime (P3: 2002–2013) (Figure 2 and Table 1). These regime shifts, as comprehensive outcomes of complex human-water interactions, are coincidentally well aligned with several well-known dominant social atmospheres in China (Table 1). The social atmosphere refers to the sociocultural context in which people live or in which something happens, underlying the direction of practices of water governance during a regime, despite lack of strict causality evidence.

During the massive supply regime (1965–1978 in the YRB), water governance tended to boost water supply for services (mainly provisioning purposes then -livestock and crops) by constructing reservoirs and channels

(Figure 3b). As the Chinese slogan “human will conquer nature” suggested then, however, the enhancement of water supply did not align with irreversible changes in the human-water relationship; it drastically increased water demand with little consideration for ecological conservation (Zhou et al., 2020). The rapid expansion of irrigated farmland and water diversion facilities in the same decade brought the overburdened YRB close to a critical point (Figure 3), where increasing supply to meet demand was impractical (Loch et al., 2020). Use of over 80% of the surface water since 1972 has led to frequent river depletion, causing additional ecological issues such as wetland shrinkage and declines in biodiversity (S. Wang et al., 2019). In addition, since water stress also limited the growing industrial economy, the existing modes of water governance led to a social-ecological crisis (Wohlfart et al., 2016).

The start of the governance transforming regime (P2: 1979–2001) coincided with rising competition for water use after the “reform and opening-up” (Figure 3c). The results from the YRB mirror those of the theoretical analysis: continuous increases in water demand when the basin's total supply is stable can follow substantial changes in governance regime and a rapid enhancement in overall social adaptive capacity (Loch et al., 2020). As a pioneer in shifting governing institutions, the YRB triggered institutional changes during this regime. These include, for example, slowing the growth of irrigated acreage and leading water-saving infrastructure (Figure 3); creation of China's first water quota scheme, and the creation of a preliminary cross-boundary water transfer plan (Long et al., 2020; Nickum & Shaofeng, 2021; Z. Wang & Zheng, 2019). Consequently, although water stress remained and increased (due to reducing streamflow and flexibility), the last depletion of the Yellow River in 1999 led to a climax in this transformation in water governance (Z. Wang & Zheng, 2019).

The ensuing adaptation-oriented regime (P3: 2002–2013) involved a significant societal shift in adapting to stable high-water stress. Partially because of changed climate (Han et al., 2023; Y. Liu et al., 2020), the runoff of the YRB was significantly lower than before when the overall water uses remained stable, which was an important reason for the rise of water stress in this stage (Figures S2 and S3 in Supporting Information S1). Socio-economic trade-offs between water-dependent regions and sectors, however, played a more important role in this regime, so water governance had to achieve efficient water allocation while balancing different demands in the face of limited water supply (Dalin et al., 2015; C. Song et al., 2022). Widespread reconstruction of resources in different industries and regions led to calls for adaptation in water governance, using the urgent requirements of adjusting rigid quota shares from the previous regime as an example (Z. Wang & Zheng, 2019). Many national-level governance practices were proposed under the regime because the absence of such policies to support high-quality development became new a structural challenge for water governance (Konar et al., 2019).

In general, water governance of the YRB is among the most prominent example in the widespread transition to a hydrosocial cycle—“improving supply, transforming governance, and enhancing adaptation.” To support water use in early stage (Figure 4a), strategies tend to manage natural water cycle in order to maintain the provisioning (larger) and non-provisioning water (less). At the later stage (Figure 4b), emphasis is governing across the whole basin, water governance practices are adaptively designed to meet the increasing needs of the socio-economic system and carried out. With the above gradually shifting, the emergence of different regimes drives water governance challenges at a basin-scale: these were primarily economic and environmental before the transformation, but social and policy-related toward the end (Figure 4) (Porcher & Saussier, 2019; Singh et al., 2019). The YRB's challenges as an example, represented by the shift in national narratives from conquering nature for economy and eliminating pollution to stressing of harmonious human-water, increased the importance of administrative measures in resolving water-related disputes. It demonstrates again that highly controlled and developed basins (especially for transboundary rivers) must resolve structural challenges, such as water disputes or lack of equity, and may be in urgent need of novel flexible, efficient sociopolitical governance structures (Mirumachi, 2015; UNEP-DHI and UNEP, 2016). Linking regime shifts to the governance challenges, the implementation of IWGI thus offers a comprehensive and straightforward way to interpret the intertwinings between water governance and the hydrosocial transition.

Future's tightly intertwined socio-hydro interactions can lead water governance challenges even more complex and comprehensive, combining resource issues and structural barriers (Huggins et al., 2022). For example, climate change may alter water scarcity levels and make it more difficult to effectively use water due to extreme climate events, strengthening water stress and threatening infrastructures (Di Baldassarre et al., 2019; J. Liu et al., 2017). Additionally, adapting to climate change could lead to transformations (Barnes et al., 2020; Sachs et al., 2019), prompting a reevaluation of governance strategies of social water usage (purpose and allocation)

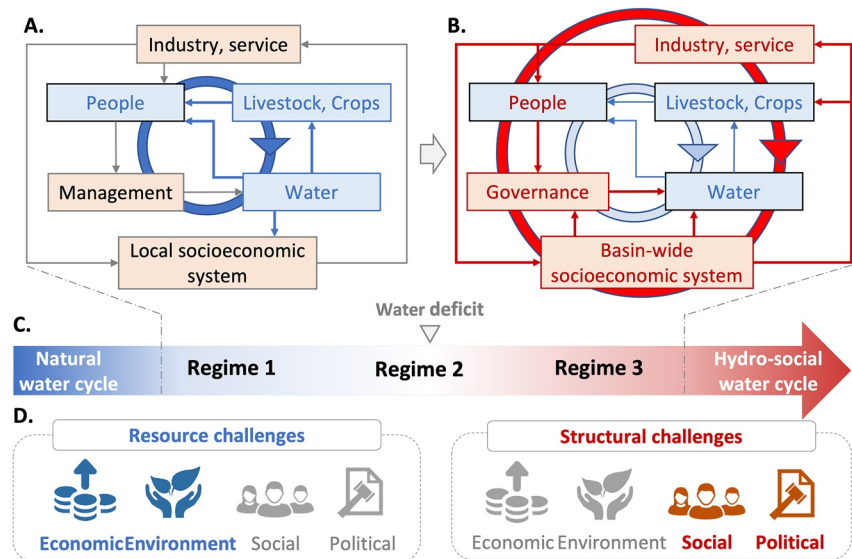


Figure 4. Transition schema in hydrosocial cycle and water governance regimes. The natural water cycle dominates blue pathways, while socio-economic feedback dominates red. The large circular arrows indicate the social and hydrological processes that dominate in different stages. Provisioning water includes water used by humans, livestock, and crops while non-provisioning water is used by industry and service. The processes expressed in the graph mainly include: water supports people in provisioning ways or influence/influenced socioeconomic systems as non-provisioning ways; people manage/govern water system based on their well-beings. The gray lines with an arrow represent weaker processes, while the thicker red or blue ones represent more significant processes. (a) As socio-economic systems develop, nonprovisioning water demand increases; simultaneously, increased adaptive capacity by engineering allows people to manage water resources to alleviate water stress. (b) With further growing socio-economic systems, trade-offs between provisioning-purpose and non-provisioning water use become prominent; a basin-wide socio-economic system requires more organized water governance. Thus, (c) the hydrosocial water cycle transition correlates with the water governance regime shifts. The transformation governance regime shift occurs following the water deficit, with the rapid growth of adaptive capacity. (d) Water governance challenges through the transitional regimes, water governance faces primarily economic, and environmental challenges but social and policy challenges later.

which is being increasingly altered by current regime transitions. It may be difficult to exhaust what is considered in a good watershed governance strategy, but the IWGI at least gives us a sense of where the river basin is heading and how challenged.

One of the main limitations in the approach is the lack of multisources data in long-term period worldwide, which means there is still a gap between comprehensively identifying and applying the IWGI widely. We propose that all water governance issues, however, can change “who gets water, when and how” so monitoring such an integrated index is essential, even use simpler indicators. We suggest that choices of indicators for different aspects can be adopted according to available data sets—for example, replace the SFV-index (indicator of allocation [IA]) with simpler scarcity index or proportion-based purpose indicator (IP) by complicated one. Another limitation is the lack of latest data sets which is coherent with the historical data sets, so our analysis had to discontinued in 2013 despite potential shifts existing. As a supplement, we examined the IWGI framework with fewer data sets from different source in recent decades where showing no significant regime changes (Figure S4 in Supporting Information S1). Therefore, we suggest the IWGI framework can be applied with adaptive indicators and flexible time series according to accessible data sets in future studies.

In today's world, regime shifts from natural to human-dominated seem likely to become increasingly widespread; comprehensive strategies to address governance challenges will have to become the core of complex human-water systems (Cumming et al., 2014; Cumming & von Cramon-Taubadel, 2018; Jaeger et al., 2019). Although river basins have shown improvements in water management technologies and water use efficiency, many are still approaching local, regional, and planetary boundaries where human-water systems may collapse (Gleeson, Cuthbert, Ferguson, & Perrone, 2020; Wang-Erlandsson et al., 2022). A deeper understanding of governance that incorporates ideas of nonlinear regime shifts and transformations should help shift the focus of governance toward maintaining the resilience of the basin's social-ecological system and improving its sustainability (Falkenmark et al., 2019).

5. Conclusion

Focusing on “who gets water, when and how,” three aspects of water governance change along with the hydrosocial cycle transition: water stress, water services purpose, and water allocation. We developed an IWGI to detect regime shifts in water governance by integrating them. Applying the IWGI to a rapidly changing large river basin (the YRB, China), we interpret how water governance shifts between three regimes over half a century. During the massive supply regime (P1: 1965–1978), water governance tended to boost water supply by constructing reservoirs and channels in the YRB. Then, the start of the governance transforming regime (P2: 1979–2001) coincided with rising competition for water use and led to institutional changes like water-saving improvements, water quota policies, and cross-boundary water transfer plans. Last, adaptation-oriented regimes (P3: 2002–2013) with stable high water stress resulted in trade-offs and joint regulating between water-dependent regions and sectors. Our approach quantitatively identifies the general schema for water governance regimes in the YRB, in line with previous theoretical analysis with a representative transition process. Linking regime shifts to their underlying causes, the implementation of the IWGI offers a comprehensive and straightforward way to interpret changes in intertwines of water governance, hydrosocial transition, and human-water relationships.

Data Availability Statement

All data used or analyzed during this study, including the reservoirs data set, measured runoff, water uses data sets, laws, and big events are available under CC-BY 4.0 license (S. Song, 2023). Figures were made with Matplotlib version 3.7.1 (Hunter, 2007) and python-ternary version 1.0.8 (Harper, 2015). These open-sourced software are separately available under the Matplotlib license at <https://github.com/matplotlib/matplotlib> and the MIT license at <https://github.com/marcharper/python-ternary>, separately.

References

- Abbott, B. W., Bishop, K., Zarnetske, J. P., Hannah, D. M., Frei, R. J., Minaudo, C., et al. (2019). A water cycle for the Anthropocene. *Hydrological Processes*, 33(23), 3046–3052. <https://doi.org/10.1002/hyp.13544>
- Ahlström, H., Hileman, J., Wang-Erlandsson, L., García, M. M., Moore, M.-L., Jonas, K., et al. (2021). An Earth system law perspective on governing social-hydrological systems in the Anthropocene. *Earth System Governance*, 10, 100120. <https://doi.org/10.1016/j.esg.2021.100120>
- Allan, T. (2001). *The Middle East water question: Hydropolitics and the global economy*. I.B. Tauris & Co. Ltd. <https://doi.org/10.5040/9780755611942>
- Bai, J. (1997). Estimating multiple breaks one at a time. *Econometric Theory*, 13(3), 315–352. <https://doi.org/10.1017/S0266466600005831>
- Barnes, M. L., Wang, P., Cinner, J. E., Graham, N. A. J., Guerrero, A. M., Jasny, L., et al. (2020). Social determinants of adaptive and transformative responses to climate change. *Nature Climate Change*, 10(9), 1–6. <https://doi.org/10.1038/s41558-020-0871-4>
- Best, J. (2019). Anthropogenic stresses on the world's big rivers. *Nature Geoscience*, 12(1), 7–21. <https://doi.org/10.1038/s41561-018-0262-x>
- Best, J., & Darby, S. E. (2020). The pace of human-induced change in large rivers: Stresses, resilience, and vulnerability to extreme events. *One Earth*, 2(6), 510–514. <https://doi.org/10.1016/j.oneear.2020.05.021>
- Biermann, F., Abbott, K., Andresen, S., Bäckstrand, K., Bernstein, S., Betsill, M. M., et al. (2012). Navigating the Anthropocene: Improving Earth system governance. *Science*, 335(6074), 1306–1307. <https://doi.org/10.1126/science.1217255>
- Bressers, H., & Kuks, S. (2013). Water governance regimes: Dimensions and dynamics. *International Journal of Water Governance*, 1(1), 133–156. <https://doi.org/10.7564/12-IJWG1>
- Cumming, G. S., Buerkert, A., Hoffmann, E. M., Schlecht, E., von Cramon-Taubadel, S., & Tscharntke, T. (2014). Implications of agricultural transitions and urbanization for ecosystem services. *Nature*, 515(7525), 50–57. <https://doi.org/10.1038/nature13945>
- Cumming, G. S., & von Cramon-Taubadel, S. (2018). Linking economic growth pathways and environmental sustainability by understanding development as alternate social–ecological regimes. *Proceedings of the National Academy of Sciences*, 115(38), 9533–9538. <https://doi.org/10.1073/pnas.1807026115>
- Dalin, C., Qiu, H., Hanasaki, N., Mauzerall, D. L., & Rodriguez-Iturbe, I. (2015). Balancing water resource conservation and food security in China. *Proceedings of the National Academy of Sciences*, 112(15), 4588–4593. <https://doi.org/10.1073/pnas.1504345112>
- Damkjaer, S., & Taylor, R. (2017). The measurement of water scarcity: Defining a meaningful indicator. *Ambio*, 46(5), 513–531. <https://doi.org/10.1007/s13280-017-0912-z>
- Diaz, S., Settele, J., Brondizio, E. S., Ngo, H. T., Agard, J., Arneith, A., et al. (2019). Pervasive human-driven decline of life on Earth points to the need for transformative change. *Science*, 366(6471). <https://doi.org/10.1126/science.aax3100>
- Di Baldassarre, G., Sivapalan, M., Rusca, M., Cudenneq, C., Garcia, M., Kreibich, H., et al. (2019). Sociohydrology: Scientific challenges in addressing the sustainable development goals. *Water Resources Research*, 55(8), 6327–6355. <https://doi.org/10.1029/2018WR023901>
- Falkenmark, M., & Wang-Erlandsson, L. (2021). A water-function-based framework for understanding and governing water resilience in the Anthropocene. *One Earth*, 4(2), 213–225. <https://doi.org/10.1016/j.oneear.2021.01.009>
- Falkenmark, M., Wang-Erlandsson, L., & Rockström, J. (2019). Understanding of water resilience in the Anthropocene. *Journal of Hydrology X*, 2, 100009. <https://doi.org/10.1016/j.hydroa.2018.100009>
- Flörke, M., Schneider, C., & McDonald, R. I. (2018). Water competition between cities and agriculture driven by climate change and urban growth. *Nature Sustainability*, 1(1), 51–58. <https://doi.org/10.1038/s41893-017-0006-8>
- Gleeson, T., Cuthbert, M., Ferguson, G., & Perrone, D. (2020). Global groundwater sustainability, resources, and systems in the Anthropocene. *Annual Review of Earth and Planetary Sciences*, 33. <https://doi.org/10.1146/annurev-earth-071719-055251>
- Gleeson, T., Wang-Erlandsson, L., Porkka, M., Zipper, S. C., Jaramillo, F., Gerten, D., et al. (2020a). Illuminating water cycle modifications and Earth system resilience in the Anthropocene. *Water Resources Research*, 56(4). <https://doi.org/10.1029/2019WR024957>

Acknowledgments

Funding was provided by the National Natural Science Foundation of China (CN) (Grants NSFC 42041007 and U2243601).

- Gleeson, T., Wang-Erlandsson, L., Zipper, S. C., Porkka, M., Jaramillo, F., Gerten, D., et al. (2020b). The water planetary boundary: Interrogation and revision. *One Earth*, 2(3), 223–234. <https://doi.org/10.1016/j.oneear.2020.02.009>
- Gleick, P. H. (1996). Basic water requirements for human activities: Meeting basic needs. *Water International*, 21(2), 83–92. <https://doi.org/10.1080/025208069608686494>
- Grafton, R. Q., Pittock, J., Davis, R., Williams, J., Fu, G., Warburton, M., et al. (2013). Global insights into water resources, climate change and governance. *Nature Climate Change*, 3(4), 315–321. <https://doi.org/10.1038/nclimate1746>
- Han, Z., Zuo, Q., Wang, C., & Gan, R. (2023). Impacts of climate change on natural runoff in the Yellow River Basin of China during 1961–2020. *Water*, 15(5), 929. <https://doi.org/10.3390/w15050929>
- Harper, M. (2015). python-ternary: Ternary plots in python [Software]. Zenodo. Retrieved from <https://github.com/marcharper/python-ternary>
- Huang, Z., Yuan, X., & Liu, X. (2021). The key drivers for the changes in global water scarcity: Water withdrawal versus water availability. *Journal of Hydrology*, 601, 126658. <https://doi.org/10.1016/j.jhydrol.2021.126658>
- Huggins, X., Gleeson, T., Kummu, M., Zipper, S. C., Wada, Y., Troy, T. J., & Famiglietti, J. S. (2022). Hotspots for social and ecological impacts from freshwater stress and storage loss. *Nature Communications*, 13(1), 439. <https://doi.org/10.1038/s41467-022-28029-w>
- Hunter, J. D. (2007). Matplotlib: A 2D graphics environment. *Computing in Science & Engineering*, 9(3), 90–95. <https://doi.org/10.1109/MCSE.2007.55>
- Jacobson, M., Meyer, F., Oia, I., Reddy, P., & Tropp, H. (2013). *User's guide on assessing water governance*. United Nations Development Programme. Retrieved from <https://www.undp.org/publications/users-guide-assessing-water-governance>
- Jaeger, W. K., Amos, A., Conklin, D. R., Langpap, C., Moore, K., & Plantinga, A. J. (2019). Scope and limitations of drought management within complex human-natural systems. *Nature Sustainability*, 2(8), 710–717. <https://doi.org/10.1038/s41893-019-0326-y>
- Keogh, E., Chu, S., Hart, D., & Pazzani, M. (2001). An online algorithm for segmenting time series. In *Proceedings 2001 IEEE International Conference on Data Mining* (pp. 289–296). <https://doi.org/10.1109/ICDM.2001.989531>
- Killick, R., Fearnhead, P., & Eckley, I. A. (2012). Optimal detection of changepoints with a linear computational cost. *Journal of the American Statistical Association*, 107(500), 1590–1598. <https://doi.org/10.1080/01621459.2012.737745>
- Kjellén, D. M., Tropp, D. H., & Jiménez, D. A. (2015). *Water governance in perspective: Water governance facility 10 years 2005-2015* (Tech. Rep.). Water Governance Facility.
- Konar, M., Garcia, M., Sanderson, M. R., Yu, D. J., & Sivapalan, M. (2019). Expanding the scope and foundation of sociohydrology as the science of coupled human-water systems. *Water Resources Research*, 55(2), 874–887. <https://doi.org/10.1029/2018WR024088>
- Lasswell, H. D. (2018). *Politics: Who gets what, when, how*. Pickle Partners Publishing.
- Liu, J., Yang, H., Gosling, S. N., Kummu, M., Flörke, M., Pfister, S., et al. (2017). Water scarcity assessments in the past, present, and future. *Earth's Future*, 5(6), 545–559. <https://doi.org/10.1002/2016EF000518>
- Liu, Y., Song, H., An, Z., Sun, C., Trouet, V., Cai, Q., et al. (2020). Recent anthropogenic curtailing of Yellow River runoff and sediment load is unprecedented over the past 500 y. *Proceedings of the National Academy of Sciences*, 117(31), 18251–18257. <https://doi.org/10.1073/pnas.1922349117>
- Loch, A., Adamson, D., & Dumbrell, N. P. (2020). The fifth stage in water management: Policy lessons for water governance. *Water Resources Research*, 56(5), e2019WR026714. <https://doi.org/10.1029/2019WR026714>
- Long, D., Yang, W., Scanlon, B. R., Zhao, J., Liu, D., Burek, P., et al. (2020). South-to-North water diversion stabilizing Beijing's groundwater levels. *Nature Communications*, 11(1), 3665. <https://doi.org/10.1038/s41467-020-17428-6>
- Matteson, D. S., & James, N. A. (2014). A nonparametric approach for multiple change point analysis of multivariate data. *Journal of the American Statistical Association*, 109(505), 334–345. <https://doi.org/10.1080/01621459.2013.849605>
- Mirumachi, N. (2015). *Transboundary water politics in the developing world* (1st ed.). Routledge.
- Mostern, R., & Horne, R. M. (2021). *The Yellow River: A natural and unnatural history*. Yale University Press.
- Nickum, J. E., & Shaofeng, J. (2021). The Yellow River Basin. In A. Kibaroglu & J. Schmandt (Eds.), *Sustainability of engineered rivers in arid lands: Challenge and response* (pp. 107–120). Cambridge University Press. <https://doi.org/10.1017/9781108261142.009>
- OECD. (2018). *OECD water governance indicator framework* (Tech. Rep.) (pp. 49–105). OECD. <https://doi.org/10.1787/9789264292659-5-en>
- Pahl-Wostl, C. (2007). Transitions towards adaptive management of water facing climate and global change. *Water Resources Management*, 21(1), 49–62. <https://doi.org/10.1007/s11269-006-9040-4>
- Pettitt, A. N. (1979). A non-parametric approach to the change-point problem. *Journal of the Royal Statistical Society. Series C (Applied Statistics)*, 28(2), 126–135. <https://doi.org/10.2307/2346729>
- Porcher, S., & Saussier, S. (Eds.). (2019). *Facing the challenges of water governance*. Palgrave Macmillan.
- Qin, D., Lu, C., Liu, J., Wang, H., Wang, J., Li, H., et al. (2014). Theoretical framework of dualistic nature–social water cycle. *Chinese Science Bulletin*, 59(8), 810–820. <https://doi.org/10.1007/s11434-013-0096-2>
- Qin, Y., Mueller, N. D., Siebert, S., Jackson, R. B., AghaKouchak, A., Zimmerman, J. B., et al. (2019). Flexibility and intensity of global water use. *Nature Sustainability*, 2(6), 515–523. <https://doi.org/10.1038/s41893-019-0294-2>
- Reyers, B., Folke, C., Moore, M.-L., Biggs, R., & Galaz, V. (2018). Social-ecological systems insights for navigating the dynamics of the Anthropocene. *Annual Review of Environment and Resources*, 43(1), 267–289. <https://doi.org/10.1146/annurev-environ-110615-085349>
- Sachs, J. D., Schmidt-Traub, G., Mazzucato, M., Messner, D., Nakicenovic, N., & Rockstroem, J. (2019). Six transformations to achieve the sustainable development goals. *Nature Sustainability*, 2(9), 805–814. <https://doi.org/10.1038/s41893-019-0352-9>
- Schmandt, J., & Kibaroglu, A. (2021). Better basin management with stakeholder participation. In A. Kibaroglu & J. Schmandt (Eds.), *Sustainability of engineered rivers in arid lands: Challenge and response* (pp. 260–270). Cambridge University Press. <https://doi.org/10.1017/9781108261142.018>
- Singh, A., Saha, D., & Tyagi, A. C. (Eds.). (2019). *Water governance: Challenges and prospects*. Springer Singapore.
- Sivapalan, M., Savenije, H. H. G., & Blöschl, G. (2012). Socio-hydrology: A new science of people and water. *Hydrological Processes*, 26(8), 1270–1276. <https://doi.org/10.1002/hyp.8426>
- Song, C., Fan, C., Zhu, J., Wang, J., Sheng, Y., Liu, K., et al. (2022). A comprehensive geospatial database of nearly 100 000 reservoirs in China. *Earth System Science Data*, 14(9), 4017–4034. <https://doi.org/10.5194/essd-14-4017-2022>
- Song, S. (2023). Yellow River water governance data [Dataset]. Zenodo. <https://doi.org/10.5281/zenodo.7955500>
- Song, S., Wang, S., Fu, B., Liu, Y., Wang, K., Li, Y., & Wang, Y. (2020). Sediment transport under increasing anthropogenic stress: Regime shifts within the Yellow River, China. *Ambio*, 49(12), 2015–2025. <https://doi.org/10.1007/s13280-020-01350-8>
- Speed, R., & Asian Development Bank. (2013). *Basin water allocation planning: Principles, procedures, and approaches for basin allocation planning*. Asian Development Bank, GIWP, UNESCO, and WWF-UK.
- Steffen, W., Richardson, K., Rockström, J., Schellnhuber, H. J., Dube, O. P., Dutreuil, S., et al. (2020). The emergence and evolution of Earth System Science. *Nature Reviews Earth & Environment*, 1(1), 54–63. <https://doi.org/10.1038/s43017-019-0005-6>

- Turton, A. R. (1999). *Water scarcity and social adaptive capacity: Towards an understanding of the social dynamics of water demand management in developing countries*. Water Issues Study Group, School of Oriental and African Studies (SOAS Occasional Paper No. 9).
- UNEP-DHI and UNEP. (2016). Transboundary river basins: Status and trends.
- Varis, O., Taka, M., & Kumm, M. (2019). The planet's stressed river basins: Too much pressure or too little adaptive capacity? *Earth's Future*, 7(10), 1118–1135. <https://doi.org/10.1029/2019EF001239>
- Wada, Y., Gleeson, T., & Esnault, L. (2014). Wedge approach to water stress. *Nature Geoscience*, 7(9), 615–617. <https://doi.org/10.1038/ngeo2241>
- Wang, S., Fu, B., Bodin, O., Liu, J., Zhang, M., & Li, X. (2019). Alignment of social and ecological structures increased the ability of river management. *Science Bulletin*, 64(18), 1318–1324. <https://doi.org/10.1016/j.scib.2019.07.016>
- Wang, S., Fu, B., Piao, S., Lü, Y., Ciais, P., Feng, X., & Wang, Y. (2016). Reduced sediment transport in the Yellow River due to anthropogenic changes. *Nature Geoscience*, 9(1), 38–41. <https://doi.org/10.1038/ngeo2602>
- Wang, Z., & Zheng, Z. (2019). Things and current significance of the Yellow River Water allocation scheme in 1987. *Yellow River*, 41(10), 109–127. <https://doi.org/10.3969/j.issn.1000-1379.2019.10.019>
- Wang-Erlandsson, L., Tobian, A., vander Ent, R. J., Fetzer, I., te Wierik, S., Porkka, M., et al. (2022). A planetary boundary for green water. *Nature Reviews Earth & Environment*, 3(6), 380–392. <https://doi.org/10.1038/s43017-022-00287-8>
- Wohlfart, C., Kuenzer, C., Chen, C., & Liu, G. (2016). Social-ecological challenges in the Yellow River Basin (China): A review. *Environmental Earth Sciences*, 75(13), 1066. <https://doi.org/10.1007/s12665-016-5864-2>
- Wu, X., Wei, Y., Fu, B., Wang, S., Zhao, Y., & Moran, E. F. (2020). Evolution and effects of the social-ecological system over a millennium in China's Loess Plateau. *Science Advances*, 6(41), eabc0276. <https://doi.org/10.1126/sciadv.abc0276>
- Yellow River Water Conservancy Commission. (2010). *Yellow River Basin comprehensive plan*. Yellow River Water Conservancy Press.
- Zhou, F., Bo, Y., Ciais, P., Dumas, P., Tang, Q., Wang, X., et al. (2020). Deceleration of China's human water use and its key drivers. *Proceedings of the National Academy of Sciences*, 117(14), 7702–7711. <https://doi.org/10.1073/pnas.1909902117>