

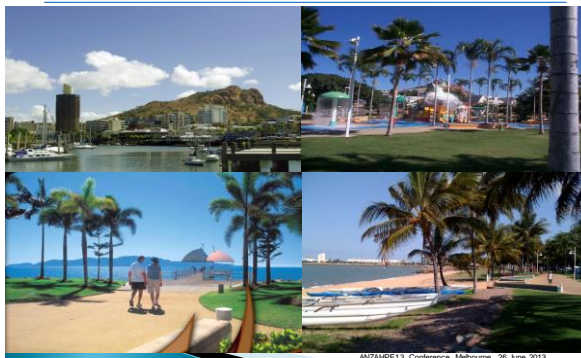
Professional Development of Mental Health Educators Through Peer Learning

Tanya Langtree, Dr Tanya Park & Dr Nikki Harvey

Wednesday 26 June 2013

School of Nursing, Midwifery & Nutrition
School of Medicine & Dentistry,
James Cook University, Townsville

Townsville, Queensland



ANZAIPE13 Conference, Melbourne, 26 June 2013

Presentation Overview

- Background & 'Issue'
- 'The Intervention'
- Lessons Learnt
- Questions/Comments



ANZAIPE13 Conference, Melbourne, 26 June 2013

Background/Issue

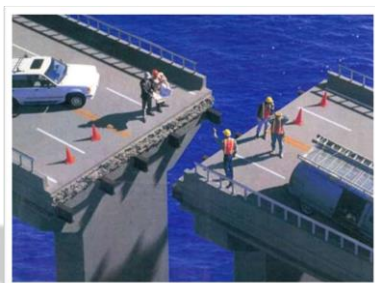
- 3rd year nursing students
- Mental health placement
- Ventrogluteal site (Hip) vs. Dorsogluteal site (Buttock)

Students wanted to learn a new skill on placement...
Registered Nurses supervising students were not happy for them to do so.



ANZAIPE13 Conference, Melbourne, 26 June 2013

Theory-practice gap



- Not new
- Embarrassing failure

(Rafferty et al., 1997; Rolfe, 2003; Wilson, 2008)

ANZAIPE13 Conference, Melbourne, 26 June 2013

Traditional vs. Evidence based practice

- First identified in the 1950s as a preferred alternative to dorsogluteal (Walsh & Brophy, 2010)
- There is a reluctance by Australian nurses to use the ventrogluteal site (Wynaden et al., 2006)
- Most used site for IMI in mental health nursing is dorsogluteal (Cocoman & Murray, 2008; Costello et al., 2011; Mullen & Flanagan, 2012)



ANZAIPE13 Conference, Melbourne, 26 June 2013

What we did first



- Consultation with key stakeholders
- Information sharing
- Literature review
- Development of an educational strategy, aka 'the intervention'

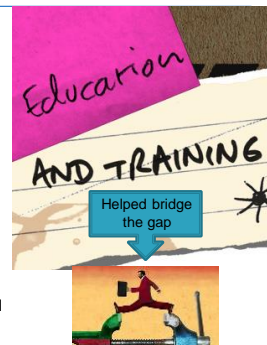


ANZAPPE13 Conference, Melbourne, 26 June 2013

'The intervention'



- **Teaching session developed**
 - Delivered over a number of months
 - 1 hour
 - JCU campus
 - Initially offered to senior MH nurses
 - Train- the- trainer approach
 - Co-facilitated by JCU and TTH



ANZAPPE13 Conference, Melbourne, 26 June 2013

'The intervention' continued



- 3 Components
 - Theoretical component
 - Practical component
 - Informal debriefing



ANZAPPE13 Conference, Melbourne, 26 June 2013

Outcomes of 'the intervention'



- Identified need to offer training across the district
- Wider working party established
- Formal teaching session developed:
 - Learning package
 - Powerpoint presentation
 - Practical session
 - 'Debriefing' session



ANZAPPE13 Conference, Melbourne, 26 June 2013

Outcomes of 'the intervention'



- Procedural checklist developed
- Additional in-services held for other industry partners

Townsville Health Service District
Page 1 of 8

Nursing and Midwifery Skills Checklist (NMSC)

Equip Function: Continuum of Care

Document Controller/Author: _____ Next Review Date: _____

Title: Administration of Intramuscular Injection using Ventrogluteal site

Target Audience: All Registered Nurses and Enrolled Nurses (Medication endorsed)

Associated Policies/Procedures:
 Health (Drugs and Substances) Regulation 1996
 THSD Medication Administration Procedure (THSDCL00080v1)
 THSD Medication Administration Policy (THSDCL00090v1)
 THSD Patient Care Medication Policy
 THSD Registered Nurse - Patient Medication (Adult patient) (THSDCL00031v2)
 THSD Waste Management - Clinical and General Waste Policy (THSDSP04014E)
 CDSMP Infection Control Guidelines
 (http://www.health.qld.gov.au/infapch_guadmin/section10.html)

Name: _____ Payroll Number: _____

SKILLS CHECKLIST

DEMONSTRATES THE ABILITY TO:
 Administer intramuscular injection using Ventrogluteal site

For Competent for Level:
 ☐ - Requires Supervision
 ☑ - Requires Development

ANZAPPE13 Conference, Melbourne, 26 June 2013

Peer to peer learning



- **Benefits**
 - Both parties respected as experts
 - Collaborative approach
 - Instilled trust in students
 - Quality assurance – positive client outcomes
 - Knowledge surrounding VG is expanding
 - Solved the initial problem



- **Challenges**
 - Change management process
 - Staff Resistance



ANZAPPE13 Conference, Melbourne, 26 June 2013

Lessons learnt



- Universities can positively influence practice in industry
- Peer to peer learning improves collaboration
- Integral to success is respect for each peer's own field of expertise
- For change to be sustainable there needs to be a 'locally based champion'

ANZAPPE13 Conference, Melbourne, 26 June 2013

Acknowledgement



- Raelene Costello
- Continues to promote and educate others about the VG site



ANZAPPE13 Conference, Melbourne, 26 June 2013

Questions/Comments



Thank you for listening



ANZAPPE13 Conference, Melbourne, 26 June 2013

Selected References



- Costello, R., & Wolf, K. (2011). "Flagging the 'VG site' for a dip by MH depot medication!", *International Journal of Mental Health Nursing*, 20(1), 3-4.
- Costello, R., Moxham, L. & Broadbent, M. (2011). The use of intramuscular (IM) or ventrogluteal (VG) depot injections: Mental health nursing practice. *International Journal of Mental Health Nursing*, 20(1), 4.
- Rafferty, A., Allcock, N., & Lathlean, J. (1996). The theory/practice 'gap': Taking issue with the issue. *Journal of Advanced Nursing*, 23(4), 685-691.
- Walsh, L. & Brophy, K. (2010). Staff nurses' sites of choice for administering intramuscular injections to adult patients in the acute care setting. *Journal of Advanced Nursing*, 67(5) 1034-1040.
- Wilson, J. (2008). Bridging the theory practice gap. *Australian Nursing Journal*, 16(4), 25.
- Wynaden, D., Landsborough, I., McGowan, S., Baigmohamad, Z., Finn, M. & Pennebaker, D. (2006). Best practice guidelines for the administration of intramuscular injections in the mental health setting. *International Journal of Mental Health Nursing*, 15(3), 195-200.

ANZAPPE13 Conference, Melbourne, 26 June 2013