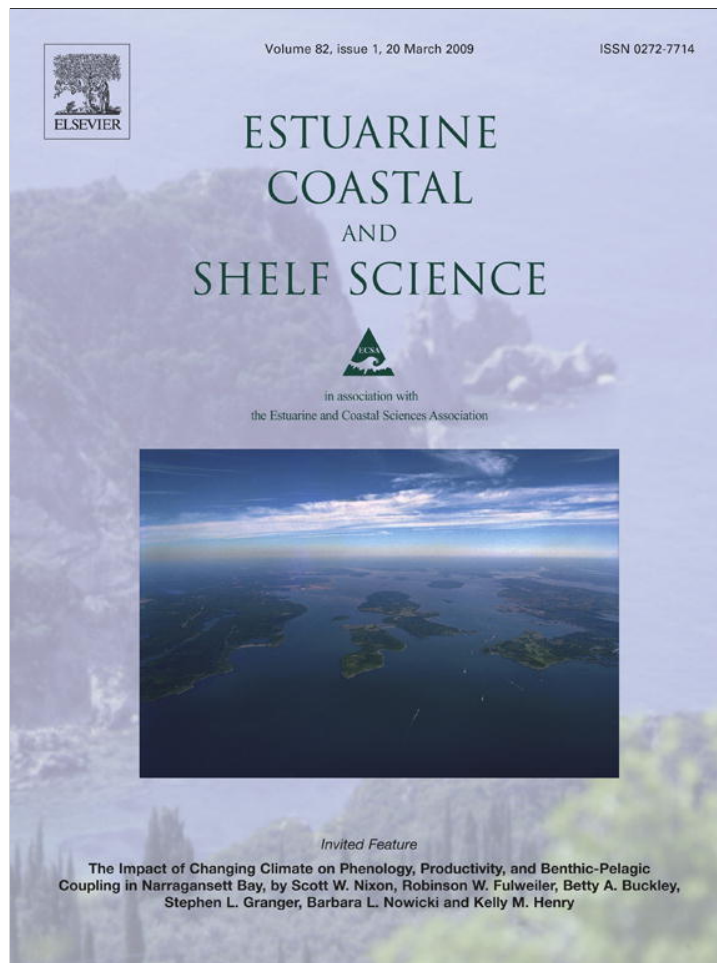


Provided for non-commercial research and education use.
Not for reproduction, distribution or commercial use.



This article appeared in a journal published by Elsevier. The attached copy is furnished to the author for internal non-commercial research and education use, including for instruction at the authors institution and sharing with colleagues.

Other uses, including reproduction and distribution, or selling or licensing copies, or posting to personal, institutional or third party websites are prohibited.

In most cases authors are permitted to post their version of the article (e.g. in Word or Tex form) to their personal website or institutional repository. Authors requiring further information regarding Elsevier's archiving and manuscript policies are encouraged to visit:

<http://www.elsevier.com/copyright>



Contents lists available at ScienceDirect

Estuarine, Coastal and Shelf Science

journal homepage: www.elsevier.com/locate/ecss

Estimating the diffuse attenuation coefficient from optically active constituents in UK marine waters

M.J. Devlin^{a,*}, J. Barry^b, D.K. Mills^b, R.J. Gowen^{c,1}, J. Foden^b, D. Sivyer^b,
N. Greenwood^b, D. Pearce^b, P. Tett^d

^a Catchment to Reef Research Group, ACTFR, James Cook University, Townsville, Queensland 4811, Australia

^b Centre for Environment, Fisheries and Aquaculture Science, Pakefield Rd, Lowestoft, NR33 0HT, England, UK

^c Aquatic Systems Group, AFESD, Department of Agriculture and Rural Development, Newforge Lane Belfast BT9 5PX, Northern Ireland, UK

^d School of Life and Health Sciences, University of Napier 10 Colinton Road Edinburgh EH10 5DT, Scotland, UK

ARTICLE INFO

Article history:

Received 16 June 2008

Accepted 15 December 2008

Available online 25 December 2008

Keywords:

light attenuation

suspended particulate matter

chlorophyll

CDOM

ABSTRACT

We report a study of the attenuation of submarine Photosynthetically Active Radiation (PAR) in relation to the concentrations of Optically Active Constituents (OACs) in a range of water types around the United Kingdom. 408 locations were visited between August 2004 and December 2005. The diffuse attenuation coefficient (K_d) was estimated from profiles of downwelling PAR. Concentrations of Suspended Particulate Matter (SPM) were measured gravimetrically and concentrations of phytoplankton chlorophyll (chl) were measured by fluorometrically. Chromophoric Dissolved Organic Matter (CDOM) was measured either by fluorescence or as its proxy, salinity.

Several empirical models for K_d as a function of SPM, chlorophyll and CDOM were fitted to the data set. It was found that including all three explanatory variables (CDOM, chlorophyll and SPM) gave a slightly better fit for coastal and offshore waters, whereas a fit based only on SPM and chlorophyll worked well for transitional (estuarine) waters. The use of SPM as a single predictor of K_d in all water types resulted in only 3% loss of accuracy.

The effect of seasonal variations in the light climate and the OACs was investigated with high frequency data from moorings in the Thames embayment and Liverpool Bay. K_d was estimated from data recorded from pairs of vertically separated PAR sensors. Using the empirical models to estimate K_d from these OACs showed that reliable estimates of attenuation could be made throughout the year, with some scatter of estimated K_d about observed K_d during the growing season.

The reliability of these findings was validated by non-linearly fitting of a mechanistic model, based on semi-intrinsic optical parameters, to the spatial data set. Estimated values of absorption cross-section and scattering cross-section were in good agreement with the literature, and help to justify parameter values obtained from the empirical models.

© 2009 Elsevier Ltd. All rights reserved.

1. Introduction

Effective strategies for managing nutrient enrichment in marine waters require an understanding of how different types of waters respond to nutrient inputs. Susceptibility to nutrient enrichment is controlled by a wide variety of processes (Painting et al., 2005). Recent reviews (Cloern, 1999, 2001) of the developing conceptual scientific model of marine eutrophication has shown a clear

progression from simple dose–response models, typically used in freshwater science, to a more realistic model that identifies direct and indirect responses that are governed by ‘filters’. The variables that form the filter are the underwater light climate, the degree of horizontal exchange, the tidal mixing regime, the extent of pelagic and benthic grazing, and biogeochemical processes such as denitrification. Light limits growth of phytoplankton and is a first order determinant of the response of phytoplankton to nutrient input in the sea. The supply of photosynthetically active radiation (PAR) for phytoplankton growth in the sea is a product of the input of solar radiation at the surface and its reduction by optically active compounds (OACs) through absorption and scattering (Kirk, 1994), which itself is increased by higher phytoplankton concentrations.

* Corresponding author.

E-mail address: michelle.devlin@jcu.edu.au (M.J. Devlin).

¹ Present address: Fisheries and Aquatic Ecosystems Branch, AFESD, Agri-Food and Biosciences Institute, Newforge Lane Belfast BT9 5PX, Northern Ireland, UK.

These internal feedbacks make the behaviour of light difficult to quantify. The rate at which light diminishes with depth is generally measured as the diffuse vertical attenuation coefficient for downwards PAR, K_d .

The UK has a large coastal zone, and many of its transitional and coastal waters are turbid and optically complex. Most of the marine waters in the UK are thought to be light limited, influencing the maximum rate of primary production (Devlin et al., 2008). Knowledge of the underwater light climate can help to predict the specific susceptibility of different marine environments to the adverse effects of nutrient enrichment, and thus focus costly measures for reducing nutrient load on those water bodies that are mostly likely to be improved in quality (Jago et al., 1993). However, it is not feasible to characterise all UK marine water bodies by direct measurement of K_d at different times of year and under a range of tidal stirring or freshwater discharge conditions. Instead, we have sought a model that relates variation in diffuse attenuation to differences in the amounts of Optically Active Components (OACs).

This paper reports observations of K_d and OACs in a variety of estuarine, coastal and offshore waters around the United Kingdom. The data have been used to estimate empirical attenuation cross-sections (the k^*) in the equation:

$$K_d = k_w^* + k_{CD}^* \text{CDOM} + K_{PH}^* \text{chloro} + k_{SP}^* \text{SPM} \quad (1)$$

where the terms on the right hand side of the equation refer to the effects of water (k_w^*), 'yellow substance' or *coloured dissolved organic matter* (CDOM) measured as fluorescence, phytoplankton photosynthetic pigments measured as the concentration of chlorophyll (chloro), and suspended particulate matter (SPM). The Equation (1) is derived from the following mechanistic equation (Kirk, 1994) in terms of beam absorption coefficients, a , and absorption cross-sections, a^* :

$$K_d = \mu_d^{-1} a = \mu_d^{-1} (a_w + a_{CD}^* [\text{CDOM}] + a_{PH}^* [\text{chloro}] + a_{SPM}^* [\text{SPM}]) \quad (2)$$

on the assumption that the mean cosine for downwards PAR photons, μ_d , can be treated as a constant over the variety of water types, solar angles and cloud covers encountered during the study. An alternative to this assumption (from Kirk, 1994 and Bowers et al., 2000) is to make the cosine depend on beam scattering by SPM:

$$\mu_d^{-1} = \sqrt{(1 + k_\mu (b_{SP}^* [\text{SPM}]) / a)} \quad (3)$$

where b_{SP}^* is a scattering cross-section and k_μ is a parameter to be discussed further in 'Methods'. These equations are termed 'mechanistic' because they synthesise the 'apparent optical property', diffuse attenuation, from more fundamental 'inherent optical properties' than can be measured in the laboratory. In fact, the beam absorbance cross-sections and the beam scattering cross-section used here are not truly inherent, because they depend on the spectrum of submarine illumination, which is likely to vary amongst the water types studied.

The aim of the paper is to report observations of attenuation and OACs in UK salt waters, and derive a practically useful, theoretically informed, model for predicting K_d . The analysis presented here extends the results and interpretation reported by Devlin et al. (2008) which aimed chiefly to estimate typical attenuations in each of the UK water types that have been identified for the Water Framework Directive (Vincent et al., 2002; Rogers et al., 2003).

2. Methods

2.1. Sampling strategy

Surveys carried out between August 2004 and December 2005 aimed at spatial extensiveness and visited a total of 408 locations (Fig. 1). Sampling took place from a variety of observational platforms, providing data at a range of spatial and temporal resolutions. Platforms used included: small vessels (inflatables and EA survey vessels) for spatial sampling in inshore areas; larger research vessels (ABFI R.V. *Corystes* and CEFAS *Endeavour*) for spatial sampling in deeper offshore regions; and bridges for some estuarine sites. In July 2005, sampling was undertaken in the Clyde sea area and Irish Sea (including Irish coastal waters of the western Irish Sea) during a Department of Agriculture and Rural Development (DARD) RV *Corystes* cruise. Sampling sites were identified as either *transitional* or *coastal* water types as designated by the Water Framework Directive (CEC, 2000), or offshore waters. Transitional waters are estuaries, characterised by salinities less than 30. Coastal waters are defined as those waters within 1 nm of the coast (3 nm from an extended coastal baseline in Scotland). All sites sampled seaward of the WFD defined coastal waters and were grouped as offshore waters.

Temporal variation of light measurements were accounted for by using daily averages of nearly-continuous observations by instrumented buoys (www.cefas.co.uk/monitoring) at 2 sites in shallow (<20 m) coastal locations (Fig. 1). Each buoy houses a suite of autonomous instruments measuring a range of variables at high frequency (daily to hourly) at fixed-point locations (<http://map.cefasdirect.co.uk/smartbuoyweb/StaticMapPage.asp>). Both sites (Liverpool Bay and the Warp Anchorage in the Thames estuary)

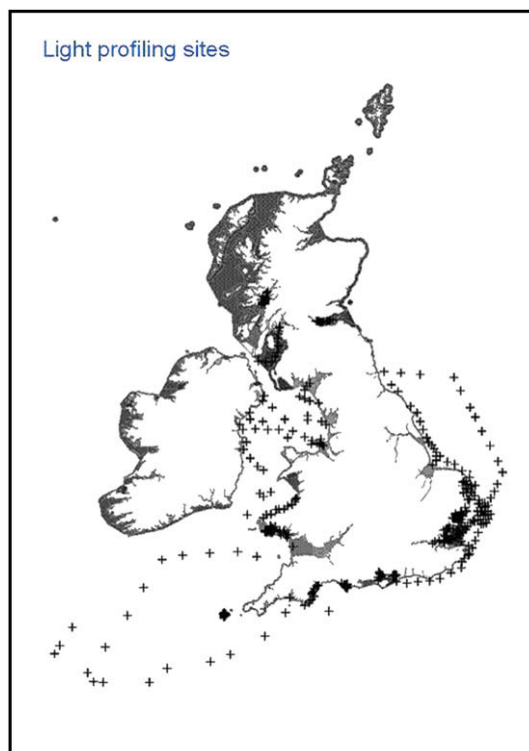


Fig. 1. A map of the British Isles and Republic of Ireland showing the location of sampling sites. Crosses illustrate the stations profiled during the spatial survey. Filled circles denote the site of CEFAS Smart Buoys at the Warp Anchorage in the Thames estuary and in Liverpool Bay. The extent of Water Framework Directive coastal and transitional water types are illustrated in light grey.

were in regions of freshwater influence close to major riverine nutrient sources and were generally well mixed with regard to density. However, intermittent periods of stratification, mainly due to salinity, have been observed in Liverpool Bay where SmartBuoy observations were carried out as part of the Proudman Oceanographic Laboratory (POL) Liverpool Bay Coastal Observatory programme (www.cefas.co.uk). Data from the Thames buoy covered the period from December 2000 until December 2005; that from Liverpool Bay started in November 2002 and ended in November 2005.

2.2. Sampling methods

At each survey site profiles were obtained using a stainless steel protective frame containing a solid state logger (Cefas ESM2) sampling at 2 Hz interfaced to a range of sensors that was lowered by hand or using a hydrographic winch. Sensors used included a Falmouth Scientific Instruments (Falmouth, USA) CT sensor, a Druk (Origin) pressure sensor, a Seapoint (Origin) chlorophyll fluorometer and optical backscatter sensor and a LI-COR (LI-192) Underwater Quantum Sensor measuring downwelling PAR irradiance. Care was taken to minimise the influence of shading on measurements made by the irradiance sensors by profiling through a constant light field; i.e. a profile could be carried out either on the illuminated or the shaded side of the platform, provided conditions were consistent and the instruments did not go into and out of shadow. Surface and near bottom water samples, were collected using Niskin type water bottles for the estimation of SPM, chlorophyll, CDOM and salinity. Offshore water samples were collected in 5-l water bottles mounted on a rosette sampler from the near surface (2 m) and near bottom (2–3 m above the seabed). At deep sites a water sample was collected from 25 m, which corresponded, to the lower limit of the irradiance profile.

The SmartBuoy instruments were in general similar to those described above. The main differences were as follows. Sensors interfaced to the logger are sampled at 1 Hz for two 10-min bursts each hour. Data for these 10-min bursts are averaged and are referred to as 'burst means'. 2–3 water samples of 150 ml each, for subsequent gravimetric analysis of SPM, were collected each week of deployment using an automated water sampler (AquaMonitor, Envirotech, Virginia, USA). Sensors and samplers were positioned at fixed depths between 1 and 2 m. Two upwards pointing LI-COR quantum irradiance sensors are used to measure downwelling PAR irradiance at 1 and 2 m depths.

2.3. Laboratory analyses

Salinity, chlorophyll, SPM and CDOM analyses were carried out on samples collected from spatial surveys using Niskin bottles and on water samples collected on the SmartBuoy. For salinity, samples were collected in 200 ml medical bottles and stored prior to analysis at Cefas. Salinity was measured using a Guildline Autosol 8400b laboratory salinometer.

Chlorophyll was measured by passing up to 250 cm³ of seawater through Whatman GF/F glass fibre filters. These filters were extracted overnight in 90% acetone neutralised with NaHCO₃ in darkness in a refrigerator as described by Tett (1987). After centrifugation, extract fluorescence was measured using a Turner Designs Model 10 – AU – 005 CE fluorometer before and after acidification with 8% HCl. This was used to calculate concentrations of 'chlorophyll a'. The fluorometer had been calibrated using pure solutions of chlorophyll a (Sigma Chemical Co, ORIGIN) with concentration determined spectrophotometrically. Replicate measurements of chlorophyll had typical standard errors of around 10%.

Samples for SPM were preserved with mercuric chloride and returned to the laboratory for filtration. The concentration of SPM was measured by gravimetric analysis using the method of Strickland and Parsons (1972). Known volumes of water were filtered through pre-weighed Whatman GF/C glass fibre filters in the laboratory. The filters were then dried and re-weighed to calculate the total suspended sediment collected on the glass fibre filters. Suspended load concentration was calculated from differences in the weight (Strickland and Parsons, 1972).

Samples for CDOM were collected from Niskins in high-density 1l polyethylene (HDPE) bottles, filtered through a 47-mm 0.2- μ m membrane and the resulting filtrate kept in amber bottles and refrigerated prior to analysis. Samples were allowed to reach room temperature. CDOM fluorescence was measured at room temperature using a Turner Fluorometer Model 10 Series fitted with a 310–390 nm excitation filter and 410–600 nm emission filter, with 10-327R attenuator plate. The method is described in detail in Foden et al. (2008). CDOM units have been revised from N.FI.U. to be quoted as S.FI.U. – standardised fluorescence units, as differentiated from normalised fluorescence units, by Ferrari and Dowell (1998).

In the absence of CDOM data on the SmartBuoy measurements, salinity was used as a proxy for CDOM. A strong, negative correlation coefficient of CDOM to salinity ($r^2 = 0.81$) is reported in Foden et al. (2008). The linear relationship described in this paper ($y = -0.174x + 6.288$) was used to calculate CDOM from the high frequency salinity data collected with the SmartBuoy observations.

2.4. Calibration of sensors

The fluorometers used in this study, for profiling and moored observations, are designed to provide a linear response between chlorophyll concentration and fluorometer voltage. Although calibrated by the manufacturer, in practice a calibration based upon field data is required (Mills and Tett, 1990).

The equation

$$X = (F - f_0)/E \quad (4)$$

was used to predict chlorophyll concentration X mg m⁻³ where E = compound fluorescence emission coefficient m³ (mg pigment)⁻¹ (V or arbitrary units);

F = fluorometer output in volts or arbitrary units in the case of the Seapoint fluorometer;

f_0 = fluorometer output in the absence of extractable pigment.

The primary aim in calibrating the fluorometer was the estimation of the compound fluorescence coefficient, E . Linear regression of fluorometer voltage on observed pigment concentration gives slope E and an intercept defined by the manufacturer. Pigment data for the calibration regressions were obtained by collecting water samples immediately after each profile or from samples collected alongside the SmartBuoy fluorometers at the beginning and end of deployments.

Concentrations of SPM were regressed (least squares linear regression) against corresponding values of optical backscatter (OBS) recorded as manufacturer calibrated FTU. Values of SPM concentration were estimated from the equation:

$$\text{SPM} = (\text{FTU} + \text{intercept}/\text{slope}) \quad (5)$$

and used to generate vertical profiles of SPM concentration. These profiles were then used to calculate a mean SPM concentration. For vertically mixed waters the whole SPM profile was used and in stratified waters the SPM profile in the surface mixed layer was used to derive the mean concentration (Mills et al., 2002).

2.5. Calculation of K_d (PAR)

The attenuation coefficient, K_d (m^{-1}) of photosynthetically available radiation (PAR), was calculated using the Lambert–Beer equation (Dennison et al., 1993) from vertical profiles of downwelling irradiance (Equation (6)). The light attenuation coefficient relates to light penetration depth and the quantity of suspended and dissolved substances.

$$K_d = -d(\ln(E_z))/dz, \text{ approximated as: } -\Delta(\ln(E_z))/\Delta z \quad (6)$$

where K_d represents the attenuation coefficient for downwards PAR, and $\ln(E_z)$ is the natural logarithm of PAR at depth z (z increasing downwards).

Surface light attenuation was not measured through the profiling. Profiles which showed evidence of contamination by cloud cover or inconsistent match ups between the top down and bottom up profiles were discarded.

To be consistent with the method of calculating mean concentrations of SPM, K_d was derived from the whole light profile and surface mixed layer profile in vertically mixed and stratified waters respectively. K_d was calculated from the slope of irradiance and depth. Typically, the relationship between logarithmic PAR and depth was linear. Areas of scatter were excluded from the vertical profile. These were most commonly seen at the region of hyper-exponential decay near the surface as some wavelengths of light are more quickly absorbed and the photon distribution is forced near the surface. Linear fitting of the irradiance values was taken to the depth at which light fell to the instrument's minimum level of detection.

In the case of Smartbuoy observations, K_d was taken from the natural logarithm of the ratio of irradiances at 1 m and 2 m depth. From the measurements of irradiance $E_d(z)$ at two depths the K_d was calculated as follows:

$$K_d(m^{-1}) = \ln\left(\frac{E_d(1)}{E_d(2)}\right)/z(2) - z(1) \quad (7)$$

2.6. Empirical models

The empirical models developed below were chosen so that they provided good empirical explanations of variation in K_d . As such, the model parameters did not have any particular physical meaning.

There were three explanatory variables for diffuse attenuation, the concentrations of the OACs coloured dissolved organic matter (CDOM), phytoplankton pigments, and suspended particulate matter (SPM). Pigments were measured as chlorophyll (chloro), and CDOM was measured as fluorescence.

Three types of model were tested. These were the Log-Normal Model, the Linear Model and the Gamma Generalised Linear Model (see Dobson, 2002). The three types of models were fitted using all possible subsets of the explanatory variables. However, they are illustrated with the full set of explanatory variables.

1. Log-Normal. For this model, it is assumed that K_d has a log-normal distribution and is predicted by:

$$\ln(K_d) = \beta_0 + \beta_{CD} \ln(CDOM) + \beta_{PH} \ln(\text{chloro}) + \beta_{SP} \ln(\text{SPM}) + \text{error} \quad (8)$$

where the error is normally distributed with mean zero and variance v^2 and the parameters, β_0 , β_{CD} , β_{CH} and β_{SP} , are estimated by their respective maximum likelihood estimates

$\hat{\beta}_0$, $\hat{\beta}_{CD}$, $\hat{\beta}_{CH}$ and $\hat{\beta}_{SP}$. In order to obtain predictions of K_d on the untransformed scale, the standard back-transformation was used

$$\tilde{K}_d = \exp\left(\ln\left(\tilde{K}_d + \hat{v}^2/2\right)\right) \quad (9)$$

where $\ln(\tilde{K}_d) = \hat{\beta}_0 + \hat{\beta}_{CD} \ln(CDOM) + \hat{\beta}_{PH} \ln(\text{chloro}) + \hat{\beta}_{SP} \ln(\text{SPM})$ and \hat{v}^2 is the estimate of the residual variance on the log scale.

2. Linear. This is the model of Equation (1), involving the assumption that the effect of each OAC on attenuation is linearly additive:

$$\ln(K_d) = \beta_0 + \beta_{CD}CDOM + \beta_{CH}chloro + \beta_{SP}SPM + \text{error} \quad (10)$$

where the error is normally distributed with mean zero and variance σ^2 . Note that the β parameters here are equivalent to the empirical attenuation cross-sections (the k^*) defined in (1). The predicted value is then,

$$\hat{K}_d = \hat{\beta}_0 + \hat{\beta}_{CD}CDOM + \hat{\beta}_{PH}chloro + \hat{\beta}_{SP}SPM \quad (11)$$

3. Gamma GLM. In this case it was assumed that K_d has a log-normal distribution; its mean was modelled using a Generalised Linear Model with errors that have a Gamma distribution and a log-link between the explanatory variable K_d and the linear predictor. The predicted values of K_d from this model were simply the exponential of the estimated values from the linear predictor:

$$\hat{K}_d = \exp\left(\hat{\beta}_0 + \hat{\beta}_{CD}CDOM + \hat{\beta}_{PH}chloro + \hat{\beta}_{SP}SPM\right) \quad (12)$$

A succession of models using each of these three approaches was calculated to investigate how the different combinations of the variables performed in the prediction of K_d . Fitting was carried out using the R statistical package (R Development Core Team, 2006).

To test the accuracy of the models, a cross validation measure (referred to here as D), was used. It calculates the percentage difference between predicted and observed values of K_d with lower values indicating greater accuracy. D is defined as:

$$D = 100 \sum_{j=1}^n \frac{|\hat{K}_d^j - K_d^j|}{|\hat{K}_d^j|} \quad (13)$$

where \hat{K}_d^j is the value predicted for observation j using all of the data except the j th observation, K_d^j is the j th observation of K_d and n is the number of cases in the prediction data set.

The coefficients for the spatial data set were assumed static in time and there were no time or space related components in the models. For the purposes of calculating confidence intervals for parameter estimates, the data were also assumed to be uncorrelated. For a small proportion of data (approximately 20%) that have been measured on the same day, this assumption is unlikely to be true. Thus, we can anticipate that confidence intervals will be marginally narrower than they should be, but the intervals should still give a good guide as to the accuracy of the coefficients. On the other hand, the high-frequency Smartbuoy data are likely to be strongly auto-correlated on short time-scales. For these data, we have not calculated confidence intervals for parameter estimates but have used these data to demonstrate the adequacy of the prediction methods and to investigate their performance throughout the year.

2.7. Theoretical model

The theoretical model introduced in Equations (2) and (3) is built from the (semi)-inherent optical properties of absorption and scattering. It can be restated as follows:

$$K_d = \mu_o^{-1} \sqrt{(a^2 + k_\mu ab)} \quad (14)$$

$$a = a_w + a_{CD}^* \text{CDOM} + a_{PH}^* \text{chloro} + a_{SP}^* \text{SPM} \quad (15)$$

$$b = b_{SP}^* \text{SPM} \quad (16)$$

Three parameters were known a priori. The first of these, μ_o is the mean cosine of downwelling light in the absence of scattering. It was given the value of 0.85, suitable for southern UK waters in the middle part of the day in summer. The coefficient called k_μ was expanded by Bowers et al. (2000) as $0.425 \times \mu_o - 0.19$, resulting in a value 0.171. The value of seawater absorption for PAR was taken as $a_w = 0.02 \text{ m}^{-1}$. The remaining four parameters (the a^* and b^* values) were estimated by non-linear fit of the Equation set (14)–(16) to the whole-survey data set. The fit was done in the statistical package R (R Development Core Team, 2006) using a simple least squares error criterion and a Nelder-Mead optimisation criterion in the function *optim*. Ninety-five percent confidence intervals for the model parameters were calculated using bootstrapping with 1000 re-samples (Manly, 1998).

3. Results

The survey data set used for development of the empirical models contained 382 full rows, each row contained K_d , SPM, CDOM and chlorophyll observations. The fitting of the full theoretical model was pruned of any row with missing observations. Four cases were removed as their SPM values were large outliers, not corresponding with water type, which we assume could have

been caused by measurement error. This left 273 complete rows, from the original 382. However, parameter estimates for models, were derived using all data rows that were complete for these models, which provided more data for the simplified models than for the complete models. Data rows were further characterised by water type: transitional waters (62 complete rows), coastal waters (185 complete rows), and offshore waters (26 complete rows).

High frequency data from the SmartBuoys was extracted from January 2001 to 2005 for Thames embayment and from January 2003 to 2005 for Liverpool Bay. Measurements of chlorophyll, SPM and salinity were taken for the optically important components of K_d . Data rows with missing observations were deleted, leaving 1091 rows for the Thames and 843 rows for Liverpool Bay.

3.1. Empirical modelling using survey data

The logarithmic relationships (over the whole data set) between K_d and CDOM, chlorophyll and SPM are illustrated in Fig. 2. By far the strongest and clearest relationship was between K_d and SPM, with log-transformed SPM explaining 91% of the variance in log-transformed K_d . The patterns were less clear for chlorophyll and CDOM. Nevertheless, both chlorophyll and CDOM had some explanatory power, and although the weakest relationship, between $\ln(\text{chlorophyll})$ and $\ln(K_d)$ explained only 3% of the variance in the latter, the correlation was statistically significant ($p = 0.006$).

Results from fitting the empirical models are given in Tables 1 and 2. In addition to fitting to the full data set, the models were also fitted separately to each of the three sets of category-specific data.

Comparison of the models using the full data set identified the single variable SPM, as being the most important variable for estimating K_d . Comparing the model scenarios, using a combination of OACs demonstrated that the models incorporating CDOM and SPM, and the model with all three variables (CDOM, SPM and chlorophyll), performed the best. There was little to choose between the Generalised Linear and the Log-Normal models. The

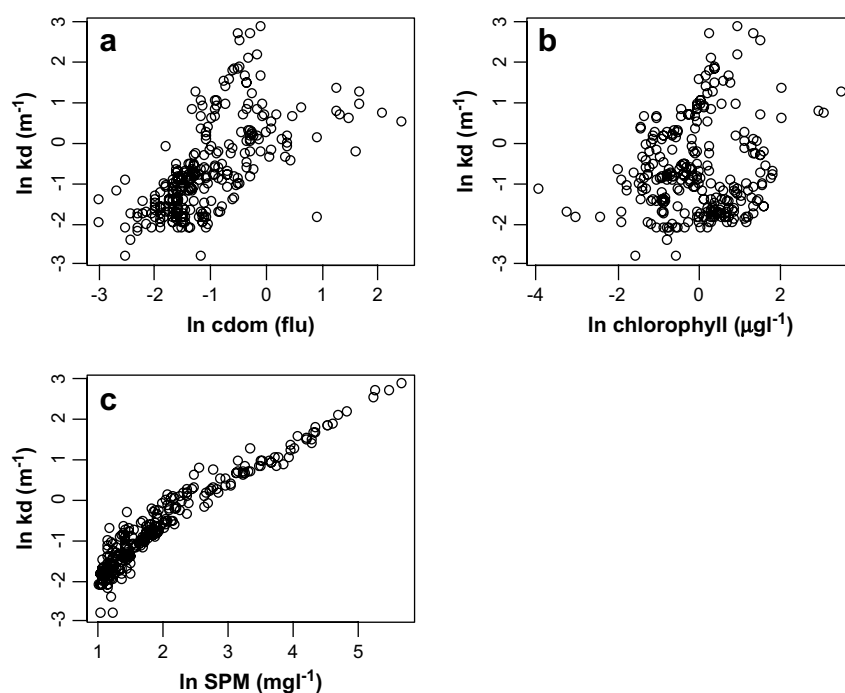


Fig. 2. All survey data described by logarithmic scatter plots of diffuse attenuation on each of the optically active components, including (a) \ln CDOM (b) \ln chlorophyll and (c) \ln SPM.

Table 1
Values of the fit statistic *D* for the survey data. Within each part of the table, the three rows give results for the model categories: Log = log-normal, Lin = linear; GLM = gamma Generalised Linear Model. *D* is the mean of the absolute relative deviations, expressed as a percentage.

Explanatory Variables in model	Model type	Mean <i>D</i>			
		Full data	Coastal	Transitional	Offshore
CDOM	Log	85.5	63.4	93.4	47.4
	Lin	99.2	90.3	98.0	879.5
	GLM	76.6	61.2	85.3	46.8
Chlorophyll	Log	107.3	91.4	82.1	89.8
	Lin	102.3	87.0	90.3	89.6
	GLM	97.2	88.1	76.4	79.8
SPM	Log	25.3	22.1	18.8	18.7
	Lin	28.8	23.3	19.1	17.7
	GLM	25.3	22.0	18.4	18.3
CDOM + Chlorophyll	Log	85.1	63.6	76.0	44.3
	Lin	99.8	109.4	87.3	583.5
	GLM	75.5	61.7	70.2	44.2
CDOM + SPM	Log	20.4	20.1	18.0	16.4
	Lin	24.0	20.4	18.0	14.4
	GLM	20.3	20.0	17.6	15.2
Chlorophyll + SPM	Log	24.6	21.5	15.4	15.1
	Lin	26.8	21.7	14.6	15.0
	GLM	24.6	21.5	14.9	14.6
CDOM + Chlorophyll + SPM	Log	20.3	19.5	15.3	14.7
	Lin	24.1	19.3	15.2	13.1
	GLM	20.3	19.5	14.8	14.2

lowest value of *D* = 22.6 for the log-normal model using the full data set of CDOM and SPM values can be interpreted as saying that *K_d* values were predicted with approximately 23% relative accuracy. In terms of future prediction, the Linear, Log-Normal and Generalised Linear Model performed equally well.

In general, the models fit better in the transitional and offshore waters than in the coastal waters. As expected, models for separate water types generally perform better than a single model fitted to the whole data set. Percentage improvements of about 6% for the transitional and offshore waters would seem to justify fitting different models to these areas.

For both coastal waters and offshore waters, the full model fitted slightly better than the reduced models. In transitional waters, the reduced model of chlorophyll and SPM performed very similarly to the full model. There was little difference between the performances of the three model types.

Table 2
Estimated linear model coefficients for the three models, 95% confidence intervals (in brackets) and residual degrees of freedom for the survey data set.

	df	β_0	β_{sp}			
SPM ($m^2 g^{-1}$)	Transitional	77	0.338 (0.205,0.472)	0.065 (0.063,0.067)		
	Coastal	249	0.188 (-0.013,0.051)	0.064 (0.068,0.071)		
	Offshore	46	0.001 (-0.081,0.083)	0.066 (0.058,0.074)		
CDOM (S.FLU) + SPM ($m^2 g^{-1}$)			β_0	β_{CD}	β_{sp}	
	Transitional	60	-0.129 (-0.179,0.079)	0.58 (0.415,0.746)	0.064 (0.062,0.066)	
	Coastal	189	-0.116 (-0.17,-0.061)	0.564 (0.383,0.745)	0.065 (0.064,0.067)	
Offshore	26	-0.145 (-0.169,-0.121)	0.156 (0.038,0.273)	0.083 (0.076,0.089)		
Chloro ($m^2 mg^{-1}$) + SPM ($m^2 g^{-1}$)			β_0	β_{PH}	β_{sp}	
	Transitional	76	0.229 (0.098,0.360)	0.046 (0.024,0.067)	0.065 (0.063,0.067)	
	Coastal	246	-0.004 (-0.048,0.040)	0.016 (-0.006,0.038)	0.070 (0.068,0.071)	
Offshore	43	0.036 (-0.095,0.167)	-0.028 (-0.109,0.054)	0.064 (0.056,0.073)		
CDOM (S.FLU) + chloro ($m^2 mg^{-1}$) + SPM ($m^2 g^{-1}$)			β_0	β_{CD}	β_{PH}	β_{sp}
	Transitional	59	0.222 (0.064,0.379)	0.003 (-0.061,0.066)	0.048 (0.025,0.071)	0.064 (0.062,0.066)
	Coastal	187	-0.150 (-0.204,-0.096)	0.569 (0.404,0.735)	0.0163 (-0.001,0.034)	0.086 (0.079,0.094)
Offshore	24	-0.167 (-0.203,-0.132)	0.102 (-0.031,0.235)	0.018 (-0.004,0.040)	0.086 (0.079,0.094)	

Table 2 includes the parameter estimates for three of the best combinations of explanatory variables for the linear model. For offshore and coastal there is little difference between the performance of the models with SPM and CDOM and with SPM and chlorophyll (though the former models are about 1% better). For transitional waters, there is a 3.4% improvement in relative prediction for the model with SPM and chlorophyll. We suggest the models below as the good predictive models for each category:

$$\text{Offshore : } \hat{K}_d = -0.145 + 0.156\text{CDOM} + 0.083\text{SPM} \quad (17)$$

$$\text{Coastal : } \hat{K}_d = -0.1155 + 0.5639\text{CDOM} + 0.0654\text{SPM} \quad (18)$$

$$\hat{K}_d = 0.2290 + 0.0456\text{chloro} + 0.0652\text{SPM} \quad (19)$$

Note units of measurement for CDOM, SPM and chlorophyll are S.FLU, $mg L^{-1}$, and $\mu g L^{-1}$ respectively.

From the 95% confidence intervals in Table 2, we can see that CDOM and SPM coefficients for the offshore and coastal categories are statistically different. The intercept terms for all three models are statistically significantly different from zero.

3.2. Testing of empirical models against high frequency data

Time-series plots of *K_d*, salinity, chlorophyll and SPM are shown in Fig. 3. In general, attenuation was greater during winter, when there was high suspended particulate matter, most likely due to the higher rainfall and runoff. Spring and summer blooms of chlorophyll and fluctuations in salinity, had apparently little effect on the attenuation signal. These patterns are clarified in the scatter plots of $\ln(K_d)$ against the OACs in Fig. 4. $\ln(\text{SPM})$ explained 99% of the variation in *K_d*.

Calculation of *D* (Table 3) using high frequency data, demonstrated that SPM remained the best single predictor of *K_d*. For the Thames embayment, the best model was the linear model with chlorophyll and SPM as explanatory variables. For Liverpool Bay the models with salinity (as a proxy for CDOM), SPM and chlorophyll fitted slightly better than the CDOM and SPM model.

As an illustration, relative residuals were calculated from the log-normal model with SPM as the explanatory variable for both Liverpool Bay and Thames moorings (Fig. 5). The relative residuals (i.e. the components of *D*) were plotted against day of year. They show that the model fits reasonably well throughout most of the year, with higher deviation during the phytoplankton bloom season (March–May). This would suggest that even though SPM is the best

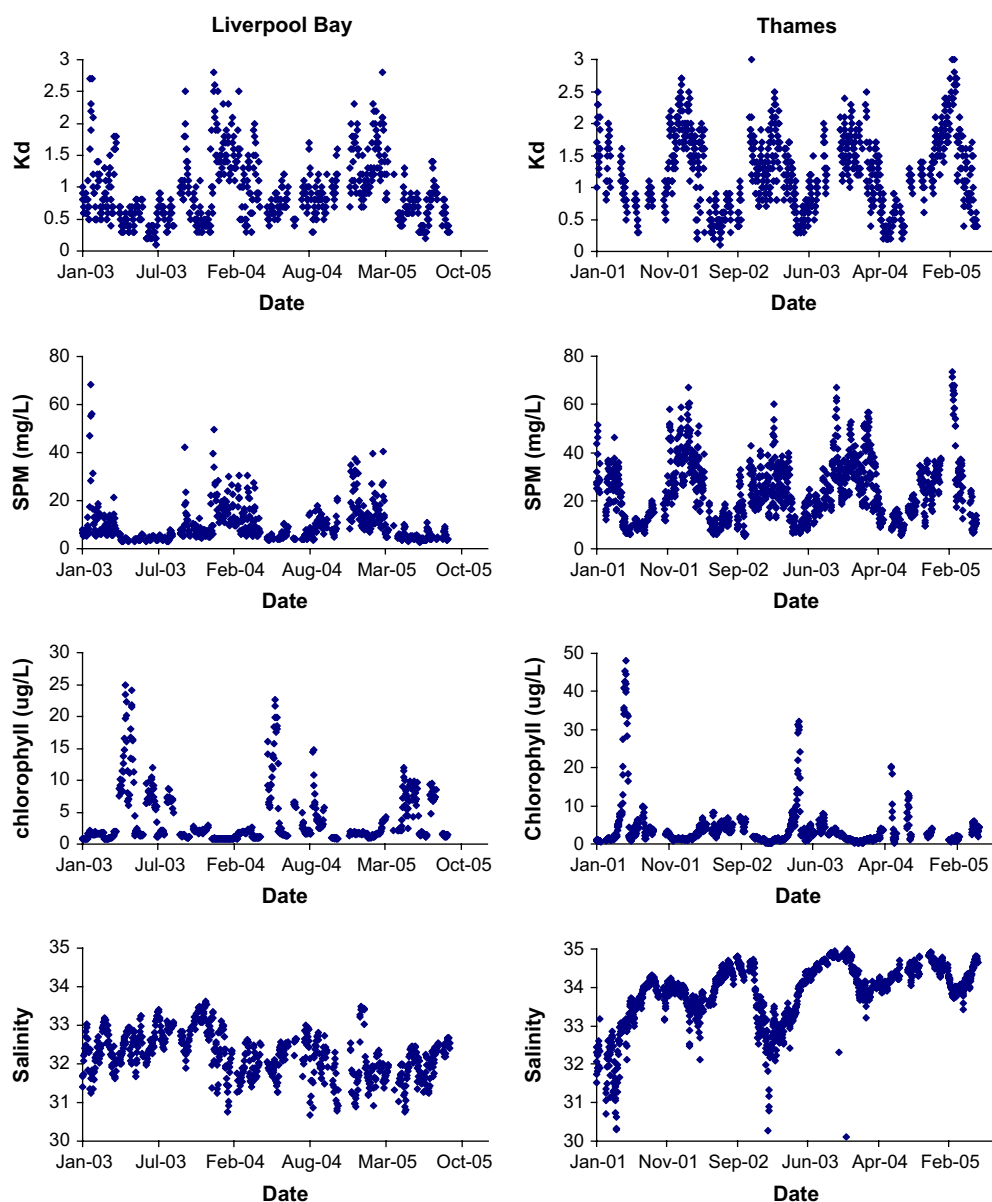


Fig. 3. High frequency data from the Smartbuoys. Time-series plots. In the case of the Thames mooring, day 0 is 1st Jan 2001, ending 21st June, 2005. For Liverpool Bay it is Jan 1, 2003, ending 4th Sept, 2005.

single predictor over time for K_d , there are periods during the year when the simple linear relationship breaks down and that the high concentrations of chlorophyll present in the spring and summer blooms do influence the prediction of K_d . It is still suitable to use SPM as a single predictor for the majority of the year without a significant loss of accuracy, however, during spring and summer blooms, it would be more appropriate to use the mixed model of chlorophyll and SPM in the Thames and the full model (CDOM, SPM and chlorophyll) for Liverpool Bay.

3.3. Theoretical model

Parameter estimates and bootstrapped 95% confidence intervals from the non-linear fit of the theoretical model are given in Table 4.

We also calculated the value of the D -statistic for the non-linear model. This came to 27.5. If we compare this with the values in the last row of Table 1 for the empirical models, we can see that these empirical models perform between 3 and 7% better than the theoretical model.

4. Discussion

The most striking and useful outcome from the empirical analysis is that SPM concentration is the most important predictor of diffuse attenuation. A linear regression using only SPM estimated K_d has a mean error of 30% over the whole data set, falling to 18% in the case of the offshore data set. Using logarithmic regression or a GLM reduced the error for the whole data set slightly, to 27–28%. Adding in the effects of chlorophyll and CDOM reduced the linear model error only to 26% for the whole data set and 13% for the offshore data set (23% and 14–15% for the other models). This supports work by Cloern, 1987, May et al., 2003, Painting et al., 2005, Weeks et al., 1993, Lund-Hansen, 2004, Xu et al., 2005, Devlin et al., 2008 that strong correlations between K_d and SPM imply that light attenuation, particularly in UK estuaries, is primarily a function of suspended sediment concentrations.

There are three reasons for this dominance. Firstly, SPM influences the optical signal by way of scattering as well as absorption of light. Secondly, the data set included a very wide range of SPM

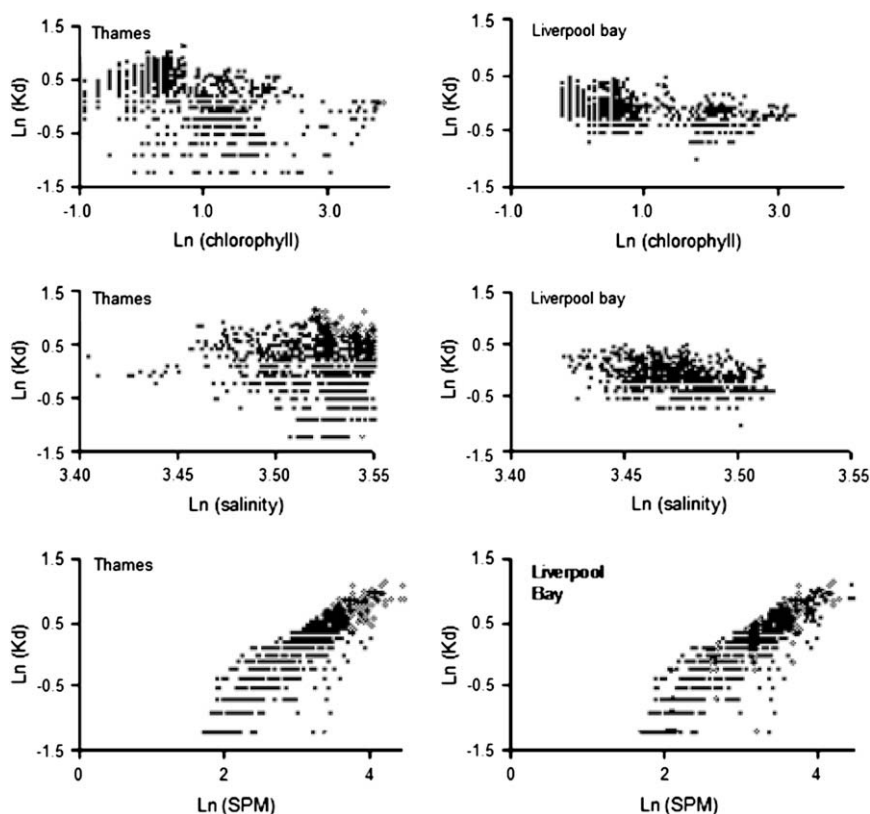


Fig. 4. High frequency data from the Smartbuoy observations described in scatter plots of log-transformed K_d on log-transformed optically active components.

Table 3

Values of the fit statistic D for the high frequency data. Within each part of the table, the three rows give results for the model categories: Log = log-normal, Lin = linear; GLM = gamma Generalised Linear Model. D is the mean of the absolute relative deviations, expressed as a percentage. Thames is Thames embayment and Liv. Bay denotes Liverpool Bay marine area.

Explanatory variables in model	Model type	Thames full data	Liv Bay full data
CDOM [sal]	Log	36.2	38.2
	Lin	36.7	38.1
	GLM	36.7	38.3
Chlorophyll ($\text{m}^2 \text{mg}^{-1}$)	Log	34.1	37.9
	Lin	36.4	43.9
	GLM	34.5	38.0
SPM ($\text{m}^2 \text{g}^{-1}$)	Log	18.1	22.4
	Lin	18.4	23.0
	GLM	18.2	22.4
CDOM[sal] + Chlorophyll ($\text{m}^2 \text{mg}^{-1}$)	Log	34.2	34.7
	Lin	36.5	53.5
	GLM	34.6	34.8
CDOM [sal] + SPM ($\text{m}^2 \text{g}^{-1}$)	Log	18.0	21.7
	Lin	18.3	21.9
	GLM	18.0	21.6
Chlorophyll ($\text{m}^2 \text{mg}^{-1}$) + SPM ($\text{m}^2 \text{g}^{-1}$)	Log	17.9	22.3
	Lin	17.8	23.2
	GLM	17.9	22.2
CDOM [sal] + Chlorophyll ($\text{m}^2 \text{mg}^{-1}$) + SPM ($\text{m}^2 \text{g}^{-1}$)	Log	17.7	21.4
	Lin	17.7	21.3
	GLM	17.8	22.0

concentrations, from 3.7 to 110 mg/L. Thirdly, many UK waters are turbid, with a high load of suspended particles. In this they may be contrasted with other waters. The Baltic Sea, for example, has an optical signal dominated by CDOM because of the large freshwater content, whereas under non-tidal and fjordic conditions, the SPM load is comparatively small (Kratzer et al., 2003; Kratzer and Tett, in press).

There is little to choose in prediction performance between any of these models. The fact that the gamma GLM model performs similarly to the log-normal model suggests that the log-normal model is a good model for K_d as the log-normal model is one of the family of gamma GLM models. However in terms of simplicity, we recommend the use of the linear models as they are relatively easy to populate with no need to calculate error. There is little or no loss of accuracy in choosing the linear model for all water types.

Fig. 6 compares: the parameter values estimated by fitting the mechanistic model to the whole data set; those estimated by the empirical multiple linear regression of coastal water attenuation on the three OACs; and values taken from Bowers et al. (2000), which were based on relevant literature and studies in the Irish Sea and the Clyde Sea. The Bowers et al values for SPM refer to mineral suspended particulate matter, whereas the values from the present work refer to total SPM (i.e. including some organic component).

'Mech-all' in Fig. 6 refers to parameters of the mechanistic, or theoretical, model fitted to the entire data set, which gave estimates of a^*_{PH} and a^*_{SP} (Table 4). 'Lin-coastal' in Fig. 6 refers to parameters from a linear fit of the coastal waters data set for K_d to CDOM, chlorophyll and SPM; the result of this fit was a set of attenuation cross-sections (Table 2, final rows), which have been converted to absorption cross-sections in Fig. 6(a) and (b) by multiplying by $\mu = 0.8$, a value of the mean cosine estimated from

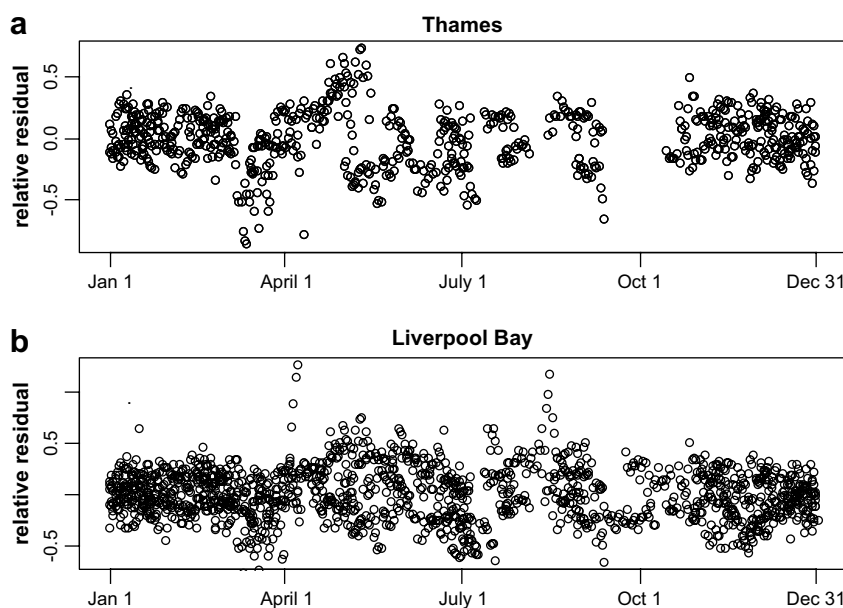


Fig. 5. High frequency data from Smartbuoy instruments: Time-series of residuals for the log-normal model with SPM as the explanatory variable for both Thames (a) and Liverpool Bay (b).

Equation (3) and mean values of the optically active components. This was also done to get the water absorption (a_w) in Fig. 6(c) from the multiple regression intercept in Table 2. The value for water absorption in the mechanistic model was that assigned before fitting. The scattering cross-section (b^*_{SP}) in Fig. 6(d) could not be estimated for the 'lin-coastal' data set.

Taking account of the confidence limits, both estimates of a^*_{PH} in Fig. 6(a) agree well with the values from Bowers et al. The offshore waters value in Table 2 is also in good agreement. The transitional waters value seems high; although the confidence limits overlap the Bowers et al. values for short wavelengths, it is more likely that it is the longer wavelength values that are typical of these waters.

The mechanistic model value of a^*_{SP} is in good agreement with the values from Bowers et al.; the linear model's value for coastal water is significantly higher, and this is also the case for the values for transitional and offshore waters in Table 2. In the case of the coastal and offshore waters data sets, a possible explanation relates to the linear model's estimate of the absorption, a_w , of pure water. As shown in Fig. 6(c) for coastal waters, this was -0.15 m^{-1} compared with 0.02 m^{-1} in the mechanistic model and the data set of Bowers et al. The negative intercept of the (multiple) linear regression has to be compensated by a higher value in the coefficient for the main optically active component, which is SPM. This explanation does not work for transitional water, for which a_w was estimated as $+0.18$.

Finally, the estimate of scattering cross-section from the mechanistic model agrees well with the value from Bowers et al., although within wide confidence limits.

Table 4

Parameter estimates and 95% bootstrapped confidence intervals for the theoretical non-linear model in Equations (14)–(16).

Parameters (units)	Estimate and 95% confidence interval
a^*_{CD}	0.054 (0.028, 0.121)
$a^*_{PH} \text{ m}^2 \text{ mg}^{-1}$	0.028 (0.008, 0.036)
$a^*_{SP} (\text{m}^2 \text{ g}^{-1})$	0.043 (0.019, 0.054)
$b^*_{SP} (\text{m}^2 \text{ g}^{-1})$	0.163 (0.045, 0.796)

The generally agreement between values estimated with the mechanistic model and those in Bowers et al. (2000) gives us confidence in the observations and the methods used to analyse the data resulting from them. The differences between the mechanistic model values and those obtained by multiple linear regression can be explained by the fitting of a linear model to graphs that may have some curvilinear or bimodal aspects, as can be seen in Fig. 2. Nevertheless, we can have confidence in the results from the empirical model because of these comparisons as well as from the results in Table 2 showing that the linear multiple regressions of K_d on CDOM, chlorophyll and SPM show a relative percentage prediction error of less than 25% for the full data set, and less than 20% when the data set is divided between water types. Finally we can conclude from Table 2 that a simple linear model relating attenuation only to SPM will often be adequate for the estimation of K_d in UK coastal waters, with less than 30% prediction error in the case of the full data set and less than 20% for the individual type data sets.

The outcomes of the models demonstrate that single sets of model parameters can be used effectively across a wide range of water types and times of year. The remaining error in the model fits, and the resulting uncertainty in parameter values, is likely from two main groups of causes. The first is the result of variability in the submarine light field that is not taken into account in any of the models. Such variability derives from: (1) seasonal and diel changes in the angle of incidence of solar radiation on the sea surface, which introduce variation into the parameter μ_0 that we have treated as fixed; and (2) variations in the spectral distribution of submarine light, which depend on the optical type of water. The latter contribute to uncertainty in the model parameters, because the truly intrinsic parameters are functions of wavelength whereas we have treated them as constant for PAR.

The second group of causes relates to the inherent properties of the OACs themselves. Scattering per unit mass of particulate matter depends on particle size, so we might expect regional variability in a^*_{SP} and b^*_{SP} . Despite this variability we found a clear, all-regions, relationship between K_d and [SPM]. Another source of variation may have arisen from regional or seasonal differences in the type of

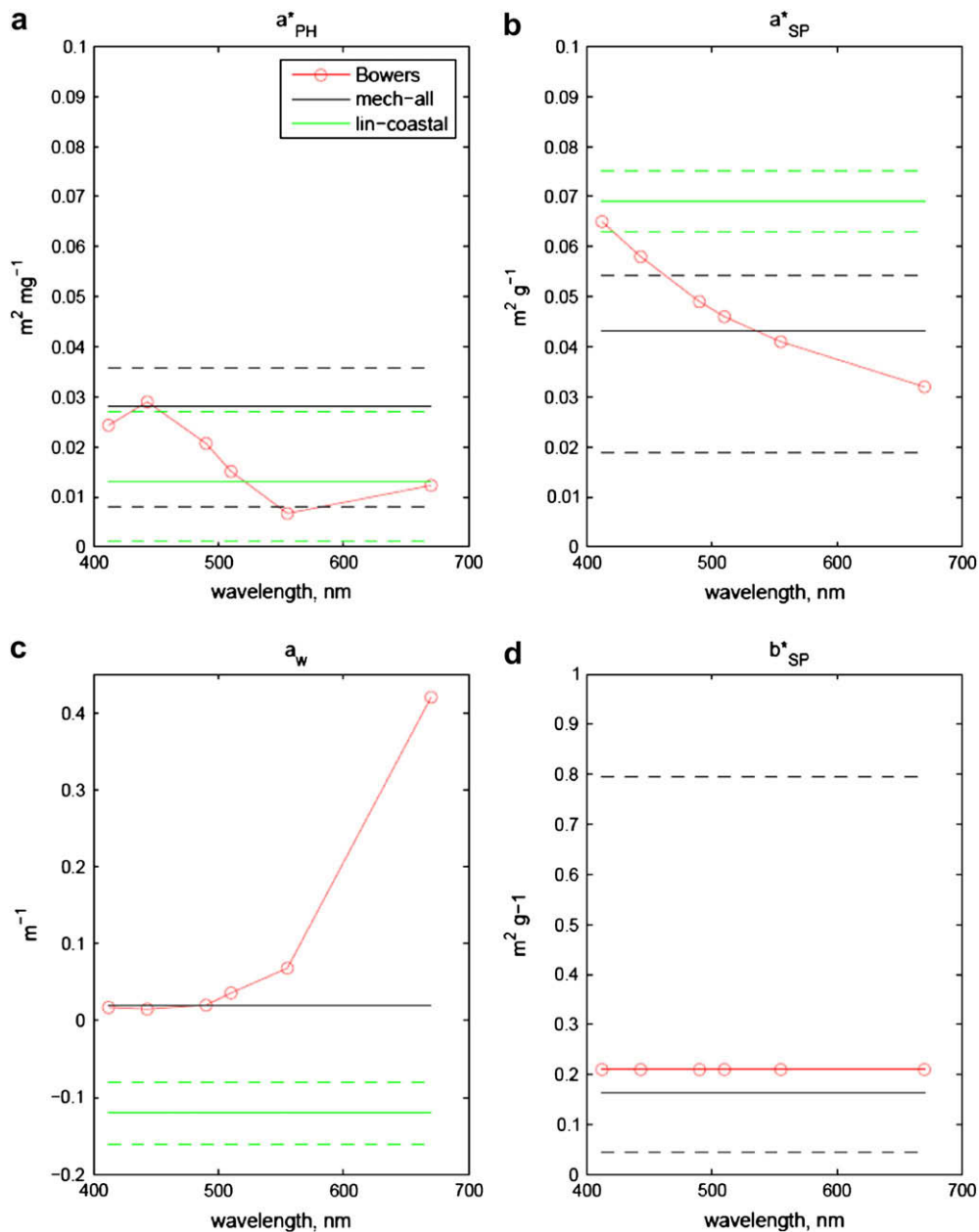


Fig. 6. Comparison of optical parameter values. The figure compares values of optical parameters from the present work with those given in Table 2 of Bowers et al. (2000). The Bowers et al. values (denoted in red) are a function of wavelength, the parameter values estimated from the present work refer to submarine PAR of varying spectral composition, and so have been plotted across the range of wavelengths used by Bowers et al. Solid lines show the estimate and dashed lines give 95% confidence. Mech-all refers to the theoretical model and Lin-coastal refers to parameters from a linear fit of the coastal water dataset for (a) chlorophyll, (b) SPM and (c) CDOM. (d) refers to scattering cross-section calculated only for the theoretical model.

planktonic micro-alga and hence in the wavelength-dependent values of a_{PH}^* .

Testing of the empirical (linear, multiple regression) model over time using a high frequency data set has shown that the model works well over the whole year, with a small loss of accuracy in the summer months as shown in the residual plots in Fig. 5. The additional scatter during these months may be the result of an increased contribution of phytoplankton chlorophyll to the OACs, and should be investigated further using the data available from moorings.

The variation in residual values between Thames and Liverpool Bay are different, with the Thames experiencing higher residual

values in May and June, indicating a later spring bloom with more persistent summer blooms (Fig. 5). Liverpool Bay has high residual values for only a short period of time, typically in April, indicating that chlorophyll influences the predictive model only during very short spring bloom peaks.

Devlin et al. (2008) investigate a large data set of SPM values from different water types to calculate the adequacy of the predictive models over different water types. This work illustrated the strong relationship between SPM and K_d in UK waters. This optical dominance of SPM in UK waters arises not just from its contribution to light absorption, but also because of its strong effect on scattering (Bowers and Binding, 2006). Further work is warranted on the

temporal variation of SPM and K_d as shown by the variation in residual concentrations during the spring and summer bloom. However, the very high accuracy attributed to the SPM model would warrant that the predictive models could be used with a high degree of confidence over the majority of the year and possibly to hindcast light from historical SPM levels in UK marine waters.

In conclusion, this study provides important new data on OACs, and their effects on K_d , in UK estuaries and coastal waters that not only inform of factors controlling the underwater light field but are also relevant to interpreting remotely-sensed emergent light (Sathyendranath and Platt, 1997; Bowers and Binding, 2006). From the analysis of spatial and temporal light data from UK marine waters, it is clear that SPM concentration is the most important predictor of diffuse attenuation. Simple linear regressions using SPM only estimated K_d with a mean error of 30% for the whole data set, falling to 18% in the case of the offshore data set. Using logarithmic regression or a GLM reduced the error for the whole data set slightly, to 27–28%. The slight decrease in error using a combination of the other OACs is significant, however the strong and persistent correlations between K_d and SPM supports current thought that light attenuation, particularly in UK estuaries, is primarily a function of suspended sediment concentrations.

Finally it is worth noting that these optically active compounds can also provide important diagnostic indicators of a wide variety of natural and anthropogenic stressors that impinge on estuaries and coastal waters (Gallegos, 2001; Gallegos and Jordan, 2002; Kratzer and Tett, in press).

Acknowledgements

This work was funded by the Defra contract (E2202) Eutrophication Thematic Programme and by DARD. The authors would like to thank Environment Agency staff who assisted in field work, the Captain, Officers and Crew of the RV Corystes for their assistance during the Clyde Sea and Irish Sea survey in July 2005. The assistance of Mr B. Stewart (DARD) Dr. K. Kennington and Miss A Harrison (University of Liverpool) during the RV Corystes cruise is gratefully acknowledged. The views expressed in this paper are those of the authors and do not necessarily reflect those of DEFRA, DARD and the EA.

References

- Bowers, D.G., Harker, G.E.L., Smith, P.S.D., Tett, P., 2000. Optical properties of a region of freshwater influence (the Clyde Sea). *Estuarine, Coastal and Shelf Science* 50, 717–726.
- Bowers, D.G., Binding, K.E., 2006. The optical properties of mineral suspended particles: a review and synthesis. *Estuarine and Coastal and Shelf Science* 67, 219–230.
- Cloern, J.E., 1987. Turbidity as a control on phytoplankton biomass and productivity in estuaries. *Continental Shelf Research* 7 (11/12), 1367–1381.
- Cloern, J.E., 1999. The relative importance of light and nutrient limitation of phytoplankton growth: a simple index of coastal ecosystem sensitivity to nutrient enrichment. *Aquatic Ecology* 33, 3–16.
- Cloern, J.E., 2001. Our evolving conceptual model of the coastal eutrophication problem. *Marine Ecology Progress Series* 210, 223–253.
- Dennison, W.C., Orth, R.J., Moore, K.A., Stevenson, J.C., Carter, V., Kollar, S., Bergstrom, P.W., Batiuk, R.A., 1993. Assessing water quality with submerged aquatic vegetation: habitat requirements as barometers of Chesapeake Bay health. *Bioscience* 43, 86–94.
- Devlin, M., Mills, D.K., Gowen, R., Foden, J., Sivyer, D., Tett, P., 2008. Relationships between suspended particulate material, light attenuation and Secchi depth in UK marine waters. *Estuarine Coastal and Shelf Science* 79, 429–439.
- Dobson, A., 2002. *An Introduction to Generalized Linear Models*, second ed. CRC Press, 245 pp.
- Foden, J., Sivyer, D.B., Mills, D.K., Devlin, M.J., 2008. Spatial and temporal distribution of chromophoric dissolved organic matter (CDOM) fluorescence and its contribution to light attenuation in UK waterbodies. *Estuarine, Coastal and Shelf Science* 79 (4), 707–717.
- Ferrari, G.M., Dowell, M.D., 1998. CDOM absorption characteristics with relation to fluorescence and salinity in coastal areas of the southern Baltic Sea. *Estuarine, Coastal and Shelf Science* 47 (1), 91–105.
- Gallegos, C., 2001. Calculating optical water quality targets to restore and protect submersed aquatic vegetation: overcoming problems in portioning the diffuse attenuation co-efficient for photosynthetically active radiation. *Estuaries* 24 (3), 381–397.
- Gallegos, C.L., Jordan, T.E., 2002. Impact of the Spring 2000 phytoplankton bloom in Chesapeake Bay on optical properties and light penetration in the Rhode River, Maryland. *Estuaries* 25, 508–518.
- Jago, C.F., Bale, A.J., Green, M.O., Howarth, M.J., Jones, S.E., McCave, I.N., Millward, G.E., Morris, A.W., Rowden, A.A., Williams, J.J., 1993. Resuspension processes and seston dynamics, southern North Sea. *Philosophical Transactions of the Royal Society of London, Series A* 343, 475–491.
- Kirk, J.T.O., 1994. *Light and Photosynthesis in Aquatic Ecosystems*, second ed. Cambridge University Press, UK.
- Kratzer, S., Buchan, S., Bowers, D.G., 2003. Testing long-term trends in turbidity in the Menai Strait, North Wales. *Estuarine Coastal and Shelf Science* 56, 221–226.
- Kratzer, S., Tett, P. Using bio-optics to investigate the extent of coastal waters – a Swedish case study. *Hydrobiologia*, in press.
- Lund-Hansen, L.C., 2004. Diffuse attenuation coefficients K_d (PAR) at the estuarine North Sea–Baltic Sea transition: time-series, partitioning, absorption, and scattering. *Estuarine Coastal and Shelf Science* 61, 251–259.
- Manly, F.J., 1998. *Randomization, Bootstrap and Monte Carlo Methods in Biology*, second ed. Chapman and Hall, London, 399 pp.
- May, C., Koseff, J., Lucas, L., Cloern, J., Schoellhamer, D., 2003. Effects of spatial and temporal variability of turbidity on phytoplankton blooms. *Marine Ecology Progress Series* 254, 111–128. S.
- Mills, D.K., Tett, P.B., 1990. Use of a recording fluorometer for continuous measurement of phytoplankton concentration. *SPIE Proceedings* 1269, 106–115.
- Mills, D.K., Rutgers van der Loerf, M., Laane, R.W.P.M., Rees, J.M., 2002. Continuous measurement of suspended matter. *Sea Technology* 43 (10), 5 pp.
- Painting, S., Devlin, M.J., Rogers, S., Mills, D.K., Parker, E.R., Rees, H.L., 2005. Assessing the suitability of OSPAR EcoQOs for eutrophication vs ICES criteria for England and Wales. *Marine Pollution Bulletin* 50, 1569–1584.
- R Development Core Team, 2006. R: A Language and Environment for Statistical Computing. R Foundation for Statistical Computing, Vienna, Austria, ISBN 3-900051-07-0. Available from: <http://www.R-project.org>.
- Rogers, S., Allen, J., Balson, P., Boyle, R., Burden, D., Connor, D., Elliott, M., Webster, M., Reker, J., Mills, C., O'Connor, B., Pearson, S., 2003. Typology for the Transitional and Coastal Waters for UK and Ireland. (Contractors: Aqua-fact International Services Ltd, BGS, CEFAS, IECS, JNCC). Funded by Scotland and Northern Ireland Forum for Environmental Research, Edinburgh and Environment Agency of England and Wales, SNIFFER Contract ref: WFD07 (230/8030). 94 pp.
- Sathyendranath, S., Platt, T., 1997. "Analytic model of ocean color". *Applied Optics* 36, 2620–2629.
- Strickland, J.D.H., Parsons, T.R., 1972. *A Practical Handbook of Seawater Analysis*, second ed. Bull. Fish. Res. Bd. Can.
- Tett, P., 1987. The ecophysiology of exceptional blooms. *Rapport et Proces-verbaux des Reunions. Conseil international pour l'Exploration de la Mer* 187, 47–60.
- Vincent, C., Heinrich, H., Edwards, A., Nygaard, K., Haythornthwaite, K., 2002. Guidance on Typology, Reference Conditions and Classification Systems for Transitional and Coastal Waters. CIS Working Group 2.4 (COAST), Common Implementation Strategy of the Water Framework Directive, European Commission, 119 pp.
- Weeks, A.R., Simpson, J.H., Bowers, D., 1993. The relationship between concentrations of suspended particulate material and tidal processes in the Irish Sea. *Continental Shelf Research* 13, 1325–1334.
- Xu, J., Hood, R.R., Chao, S.Y., 2005. A simple empirical optical model for simulating light attenuation variability in a partially mixed estuary. *Estuaries* 28 (4), 572–580.