

STEREOPUBLIC

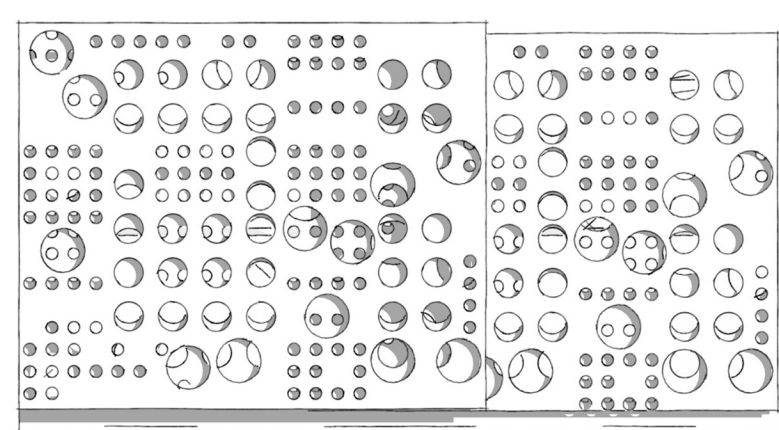
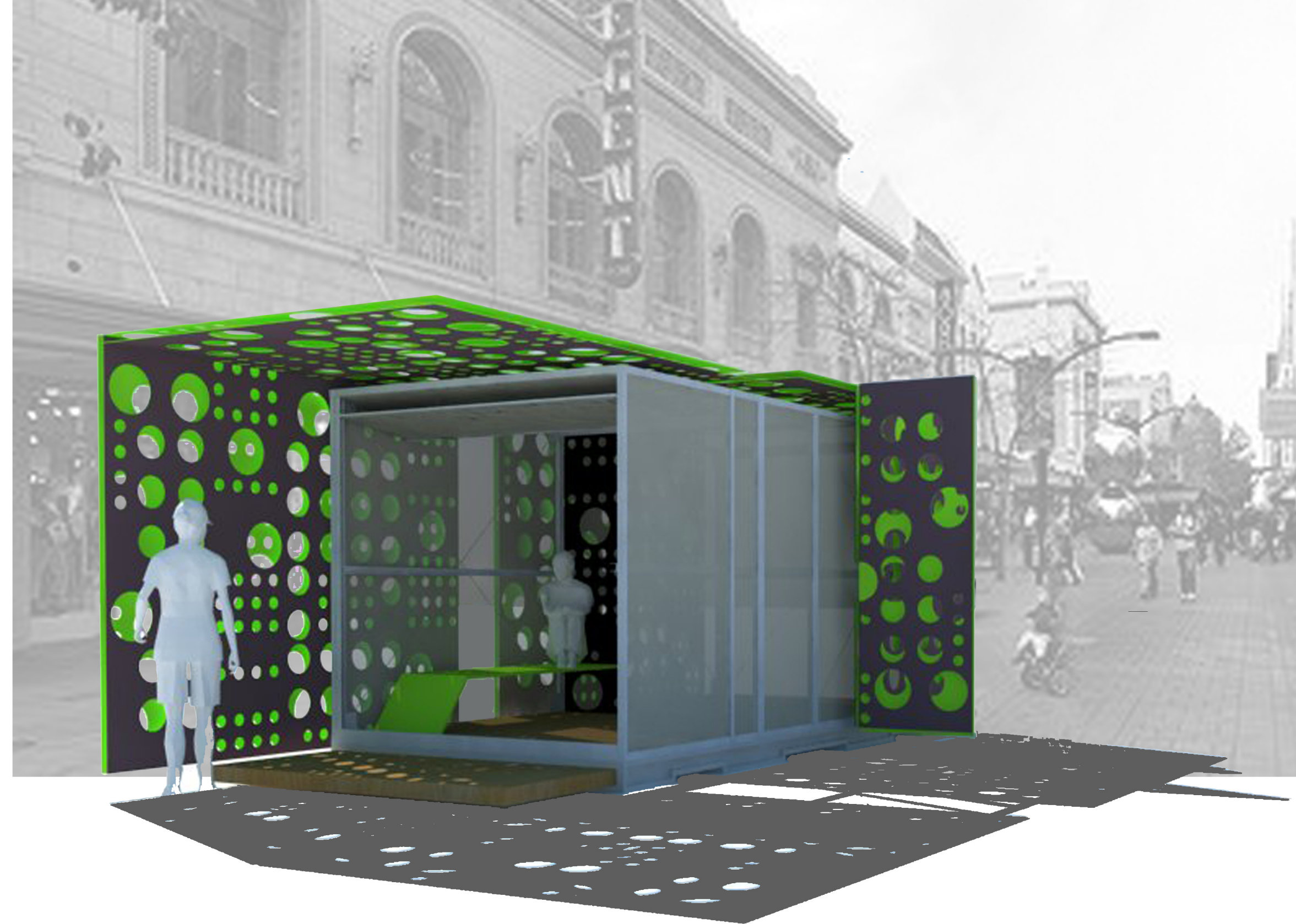
crowdsourcing the quiet

“cities have long underestimated the importance of sonic health.”
Jason Sweeney

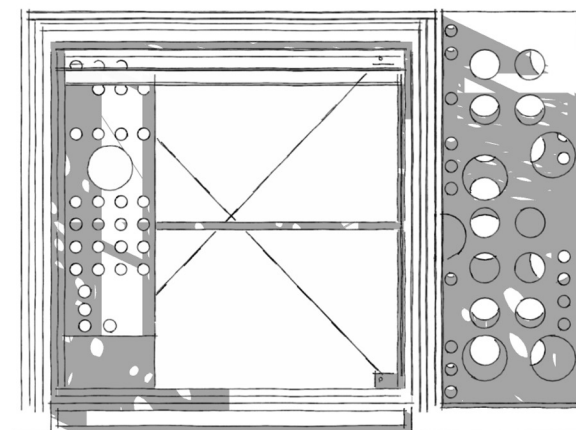
The Sound Pod will act as a focal point for Crowdsourcing the Quiet; a web and smartphone based platform where people can crowdsource and geo-locate quiet spaces in urban environments. As a prefabricated spatial entity the Pod is designed to adapt to a multitude of environmental conditions and uses. The placing of the Sound Pod will provide a focal point for the project, becoming a principal node in the mapping network of quiet spaces. The pod will function as a temporary sheltered area for users to enter into the experience of the artwork and as a portable recording studio. It will include external power and lighting connections as well as the function to work autonomously, generating power and illumination with inbuilt photovoltaics and power storage facilities.

As the Sound Pod is not specifically connected to a permanent location or climate, the design enables an adjustability which is able to respond to orientation and variable site conditions through the implementation of a retractable facade system. The unfolded facade also provides transitional spaces between the interior and exterior of the pod and creates ambient interior shadow castings which are inspired from the notion of dappled light beneath a shady tree.

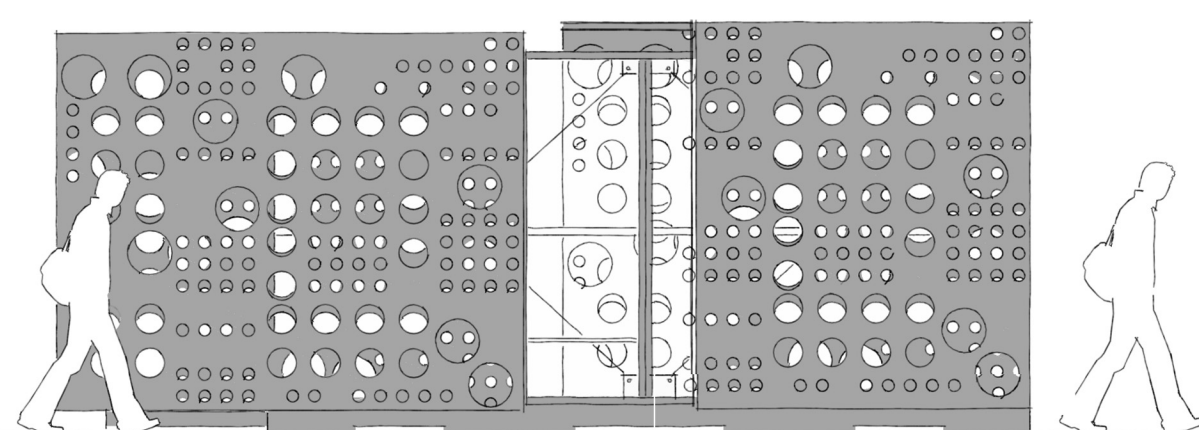
The completed structure and appearance of the building form will ultimately be dictated by the artistic intent of the project. In the interests of sustainable building practice however efforts will be made to source low cost, readily available materials with an emphasis on recycled or reusable products. Fabricated from lightweight materials the pod can be easily transported in its retracted mode, or dismantled for storage and on site construction.



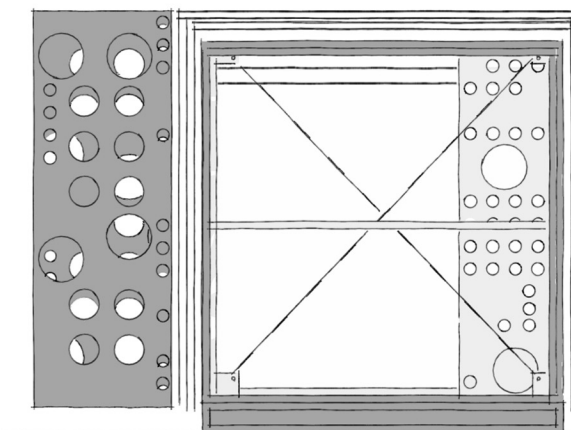
ELEVATION 1 : POD RETRACTED



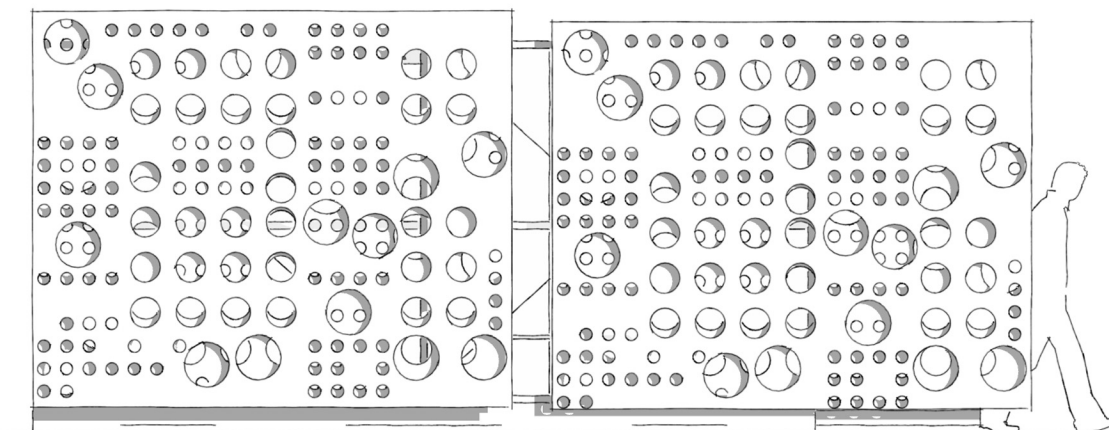
ELEVATION 2 : ENTRY



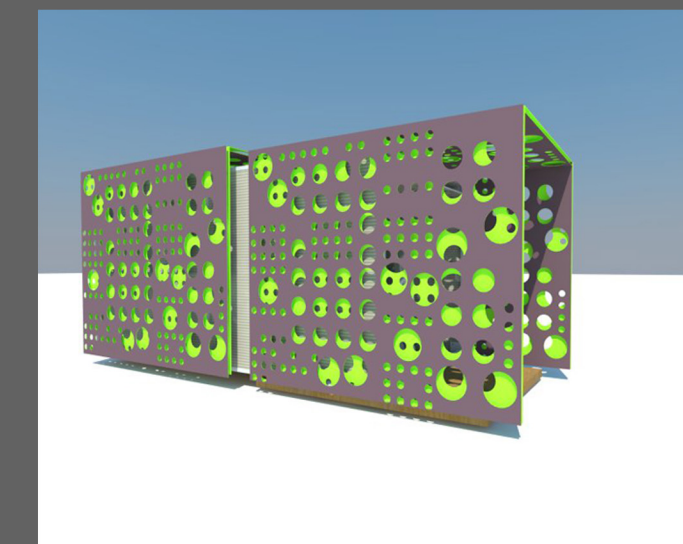
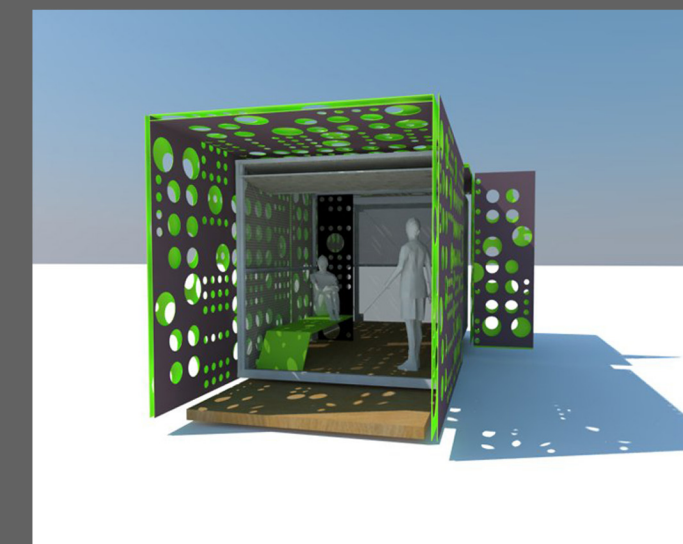
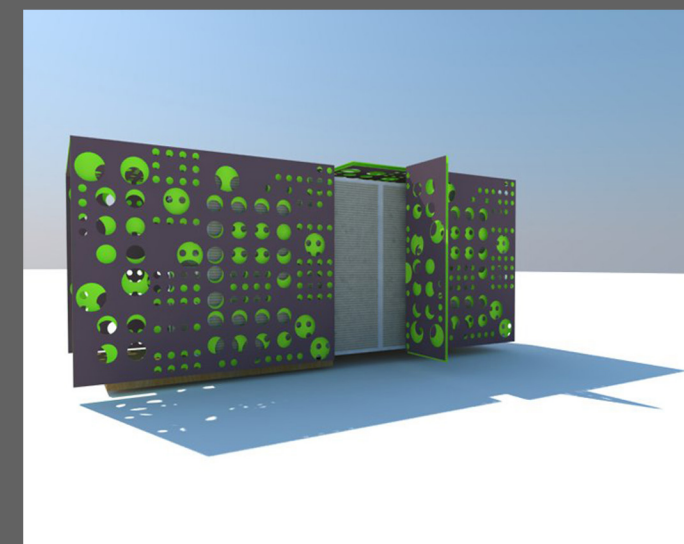
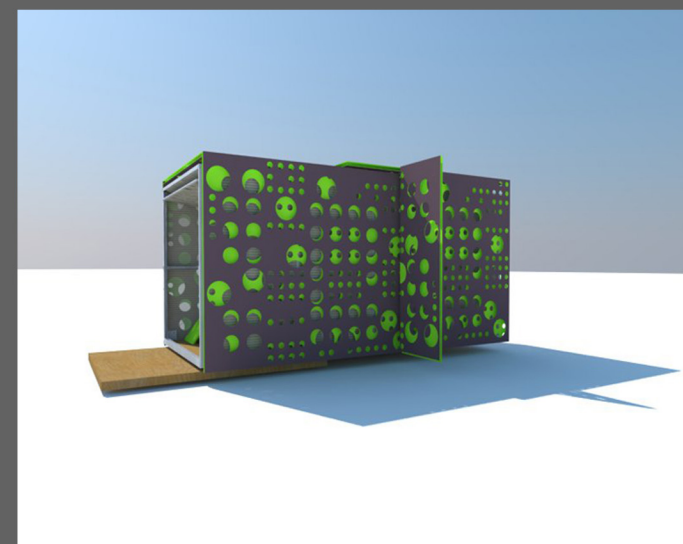
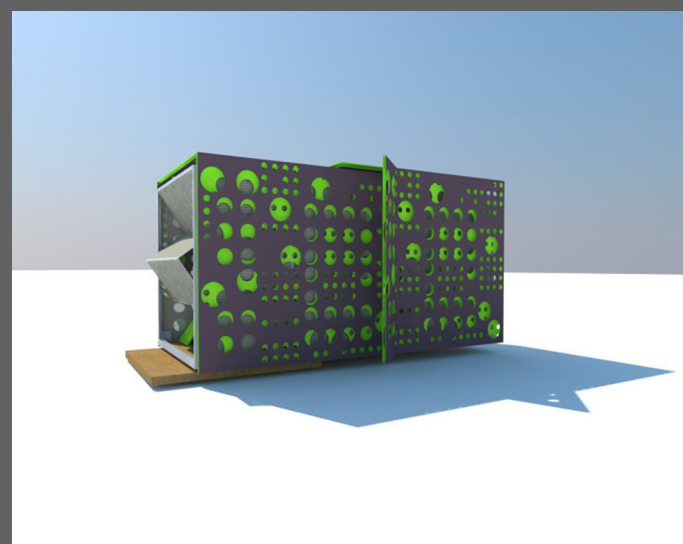
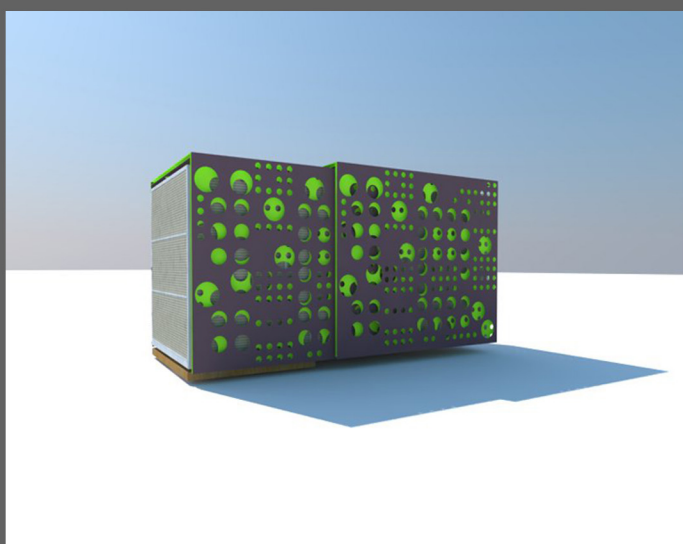
ELEVATION 3 : OUTER SCREEN OPEN



ELEVATION 4 : SHORT AXIS



ELEVATION 5 : FACADE LONG AXIS



3D: FILM STRIP SHOWING UNFOLDING OF SOUND POD