



# Corallimorpharians are not “naked corals”: insights into relationships between Scleractinia and Corallimorpharia from phylogenomic analyses

Mei Fang Lin<sup>1,2</sup>, Wen Hwa Chou<sup>3</sup>, Marcelo V. Kitahara<sup>4,5</sup>,  
Chao Lun Allen Chen<sup>3</sup>, David John Miller<sup>1,2</sup> and Sylvain Forêt<sup>1,6</sup>

<sup>1</sup> Australian Research Council Centre of Excellence for Coral Reef Studies, James Cook University, Townsville, QLD, Australia

<sup>2</sup> Comparative Genomics Centre and Department of Molecular and Cell Biology, James Cook University, Townsville, QLD, Australia

<sup>3</sup> Biodiversity Research Center, Academia Sinica, Taipei, Taiwan

<sup>4</sup> Departamento de Ciências do Mar, Universidade Federal de São Paulo, Santos, São Paulo, Brazil

<sup>5</sup> Centro de Biologia Marinha, Universidade Federal de São Paulo, São Sebastião, São Paulo, Brazil

<sup>6</sup> Research School of Biology, Australian National University, Canberra, ACT, Australia

## ABSTRACT

Calcification is one of the most distinctive traits of scleractinian corals. Their hard skeletons form the substratum of reef ecosystems and confer on corals their remarkable diversity of shapes. Corallimorpharians are non-calcifying, close relatives of scleractinian corals, and the evolutionary relationship between these two groups is key to understanding the evolution of calcification in the coral lineage. One pivotal question is whether scleractinians are a monophyletic group, paraphyly being an alternative possibility if corallimorpharians are corals that have lost their ability to calcify, as is implied by the “naked-coral” hypothesis. Despite major efforts, relationships between scleractinians and corallimorpharians remain equivocal and controversial. Although the complete mitochondrial genomes of a range of scleractinians and corallimorpharians have been obtained, heterogeneity in composition and evolutionary rates means that mitochondrial sequences are insufficient to understand the relationship between these two groups. To overcome these limitations, transcriptome data were generated for three representative corallimorpharians. These were used in combination with sequences available for a representative range of scleractinians to identify 291 orthologous single copy protein-coding nuclear markers. Unlike the mitochondrial sequences, these nuclear markers do not display any distinct compositional bias in their nucleotide or amino-acid sequences. A range of phylogenomic approaches congruently reveal a topology consistent with scleractinian monophyly and corallimorpharians as the sister clade of scleractinians.

Submitted 21 June 2016  
Accepted 19 August 2016  
Published 11 October 2016

Corresponding authors

David John Miller,  
david.miller@jcu.edu.au  
Sylvain Forêt,  
sylvain.fore@anu.edu.au

Academic editor

Mauricio Rodriguez-Lanetty

Additional Information and  
Declarations can be found on  
page 11

DOI 10.7717/peerj.2463

© Copyright  
2016 Lin et al.

Distributed under  
Creative Commons CC-BY 4.0

OPEN ACCESS

**Subjects** Evolutionary Studies, Taxonomy, Zoology

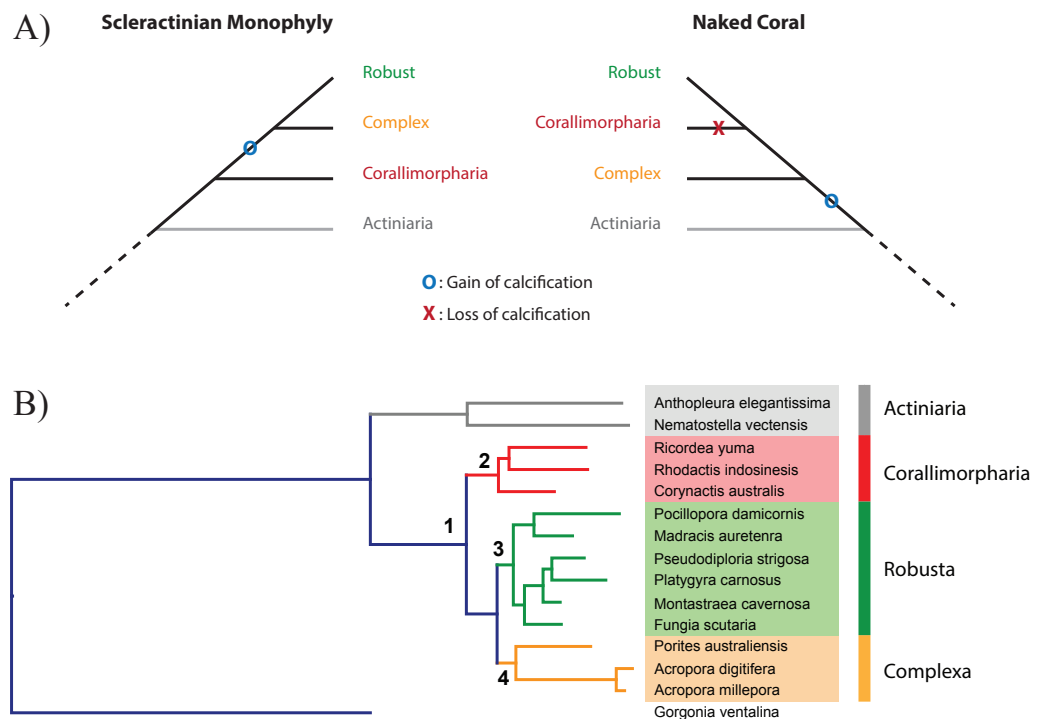
**Keywords** Anthozoa, Corallimorpharia, Phylogenomics, Scleractinia, Corals

## INTRODUCTION

Scleractinian corals are the subject of intense scientific, public and, therefore, media interest, particularly because of the uncertain fate of coral reefs in the face of ever increasing anthropogenic challenges (*Done, 1999; Hughes, 2003; Hughes et al., 2003*). Due to their capacity to deposit massive continuous calcareous skeletons, the coral reef framework built by scleractinians provides one of the most complex and diverse of biological habitats (*Cohen & Holcomb, 2009*). Despite their ecological importance and our economic dependence on them (*Moberg & Folke, 1999*), we know remarkably little about the evolutionary history of this animal group. This lack of understanding limits our ability to predict how corals, and therefore the diverse habitats that they support, will respond to climate change and ocean acidification (OA).

Although the vast majority of scleractinian fossils post-date the sudden appearance of diverse coral families 14 My after the Permian/Triassic boundary, there is now evidence that the evolutionary origin of the group is rooted deep in the Paleozoic. In brief, molecular clock estimates calibrated using the earliest fossils that can be unambiguously assigned to extant clades, and whose unique skeletal characters can be unequivocally recognized in fossil coralla, imply that the scleractinian corals originated from a non-skeletonized ancestor in the Ordovician (*Stolarski et al., 2011*). When considered in conjunction with the elusive Paleozoic fossil record of the scleractinian lineage (*Ezaki, 1997; Ezaki, 2000; Scrutton & Clarkson, 1991*), this suggests that either the fossil record for the period between the Ordovician and late Permian is yet to be discovered, or that skeleton formation may be an ephemeral trait within the Scleractinia (*Stanley & Fautin, 2001*).

The idea that the ability of corals to deposit a skeleton may be an ephemeral trait on evolutionary time scales, the presence or absence of a calcareous skeleton potentially reflecting prevailing environmental conditions, together with the anatomical similarity of Actiniaria, Corallimorpharia, and Scleractinia (*Daly et al., 2007; Stanley & Fautin, 2001*), led Stanley (*Stanley, 2003*) to propose the “naked coral” hypothesis (*Fig. 1A*). The central idea of this hypothesis is that “different groups of soft-bodied, unrelated anemone-like anthozoans gave rise to various calcified scleractinian-like corals through aragonitic biomineralization” (*Stanley, 2003*), potentially explaining the sudden appearance of a diverse and differentiated range of scleractinian skeletal types in the Triassic. Under this hypothesis, the scleractinian skeleton is not a synapomorphy, but stands for an organization grade. Consistent with this hypothesis, the Scleractinia were paraphyletic in molecular phylogenetic analyses based on amino acid (aa) sequence data from mitochondrial protein-coding genes (*Medina et al., 2006*). In these analyses, it was estimated that corallimorpharians—anthozoans without a skeleton—diverged from the Robust scleractinian clade during the late- and mid-Cretaceous, implying that corallimorphs were descended from a coral that had undergone skeleton loss during a period of increased ocean acidification. Whilst ocean acidification events occurred in that period they did not cause any reef crisis (*Honisch et al., 2012; Kiessling, Simpson & Foote, 2010; Pandolfi et al., 2011*). Moreover, some alternative phylogenetic analyses based on a range of other molecular markers (*Chen, Wallace & Jackie, 2002; Fukami et al., 2008; Lin*



**Figure 1** Relationship between Scleractinia and Corallimorpharia. (A) The two competing hypotheses regarding the relationship between Corallimorpharia and Scleractinia: scleractinian monophyly and the “naked coral” topology. Scleractinian monophyly implies that the ability to calcify was acquired in the ancestor of Scleractinia, whilst the naked coral hypothesis requires secondary loss of this trait in the ancestor of Corallimorpharia. (B) Maximum likelihood phylogenetic tree based on the amino acid sequences of 291 nuclear genes from 15 anthozoans with the JTT + GAMMA + I model. The critical nodes (1, 2, 3 and 4) are fully supported, as reported in Table 1. The same topology was obtained for all the other analyses with equally strong support (see Table 1).

*et al.*, 2014; Romano & Palumbi, 1996) did not support the naked coral scenario, and it has become apparent that mitochondrial sequence data might not be appropriate for the elucidation of phylogenetic relationships within the Corallimorpharia/Scleractinia clade (Kitahara *et al.*, 2014).

The issue of coral/corallimorpharian relationships is of particular importance, because the idea that skeleton loss can occur as a consequence of ocean acidification carries implications for the future of corals and coral reefs under climate change and elevated atmospheric [CO<sub>2</sub>]. A better understanding of coral evolution more broadly has further implications for coral reef futures. For instance, it is important to understand how prior OA events (KieSSLing, Simpson & Foote, 2010) have impacted the scleractinian lineage, and the underlying causes of previous “reef crises” (Hoegh-Guldberg *et al.*, 2007).

In order to shed light on the relationship between Corallimorpharia and Scleractinia, phylogenomic analyses were carried out based on 291 single-copy nuclear protein-coding genes from a representative range of robust and complex corals, corallimorpharians, and sea anemones. To enable the phylogenomic analysis, it was first necessary to generate

comprehensive transcriptome assemblies for the three corallimorpharian species—*Rhodactis indosinensis*, *Ricordea yuma* and *Corynactis australis*. These molecular data constitute an important resource for this neglected animal group. Analyses were carried out both at the amino acid and nucleotide levels on concatenated, partitioned and individual alignments using multiple inference methods. The results provide strong support for scleractinian monophyly, allowing rejection of the hypothesis that corallimorpharians are “naked corals”—descendants of a scleractinian that had undergone skeleton loss.

## MATERIALS AND METHODS

### Transcriptome assembly and data matrix

The complete workflow from data collection to analysis is summarized in Fig. S1. The taxonomic sampling (Table S1) included three “Complex” corals from two families, six “Robust” corals from five families, three corallimorpharians representing three families, and two actinarians. *Gorgonia ventalina* was used as the outgroup. The new corallimorpharian transcriptome data were obtained from two zooxanthellate species (*Ricordea yuma* and *Rhodactis indosinensis*) and an azooxanthellate species (*Corynactis australis*). *Ricordea yuma* samples were collected from the Great Barrier Reef (18°25'35.20"S, 146°41'10.91"E). *Corynactis australis* colonies were collected from Jervis Bay, New South Wales (35°4'14.11"S, 150°41'48.20"E). The *Rhodactis indosinensis* samples were collected at Beitou fishing harbor, Keelung, Taiwan. The transcriptomes were generated from purified RNA extracted by using Trizol Reagent (Invitrogen, USA) and dissolved in RNase-free water. High throughput sequencing was conducted using the Illumina HiSeq 2000 platform. The transcriptomes were then assembled with Trinity (r2013\_08\_14) using default settings (Grabherr et al., 2011). *Symbiodinium* sequences were eliminated using PSyTranS (<https://github.com/sylvainforet/psytrans>). The resulting contigs were clustered with CD-HIT-EST (Li & Godzik, 2006) at a sequence similarity threshold of 0.9. The contigs were then translated into amino acid sequences with TransDecoder (Grabherr et al., 2011). A summary of the resulting transcriptome assemblies is given in Table S2. The raw reads and the transcriptome assemblies have been deposited to NCBI under BioProject PRJNA313487.

HaMStR v13.2 (Ebersberger, Strauss & Von Haeseler, 2009) was used to search for orthologs using three available cnidarian genomes as primer taxa, *Acropora digitifera* (Shinzato et al., 2011), *Nematostella vectensis* (Putnam et al., 2007) and *Hydra magnipapillata* (Chapman et al., 2010), with *A. digitifera* as the reference taxon, resulting in 1,808 core orthologs. The same program was used for an extended search for orthologs in the other scleractinians, corallimorpharians, and actinarian transcriptomes. The *H. magnipapillata* sequences were excluded from the phylogenetic analyses due to their very high divergence with the Anthozoan sequences. In the end, we identified 291 one-to-one orthologs across all 15 taxa. Each orthologous group was annotated according to the best blast hit of the *A. digitifera* protein in that cluster against the NCBI nr database with an e-value cut-off of 1e-5.

The amino acid (aa) sequences from the 291 orthologous genes were aligned using MAFFT L-INSI v7.13 (Katoh & Standley, 2013) and subsequently trimmed using trimAl

v1.2 with the Heuristic method (*Capella-Gutierrez, Silla-Martinez & Gabaldon, 2009*). The nucleotide (nt) alignments were deduced from the aa alignments as described in (*Kitahara et al., 2014*). The saturation at each nucleotide position was estimated with DAMBE v5.3.110 (*Xia, 2013*), revealing no significant saturation in the dataset (*Table S3*).

### Supermatrix phylogeny

For the concatenated aa matrix, the best fitting model determined using ProtTest v3 (Darriba et al. 2011) was JTT + G + I. Maximum likelihood (ML) analyses were carried out with RAxML v7.2.6 (*Stamatakis, 2006*) using rapid bootstrapping (-f a). Phylogenies based on the supermatrix were also computed using Bayesian inference (BI) with PhyloBayes MPI v1.5a (*Lartillot et al., 2013*) using the JTT + G + I model. Identical topologies were recovered with CAT-Poisson, and CAT + GTR models. Each run contained four chains and ran until convergence. Convergence was assessed after a burn-in period of 2,000 generations following the author's guidelines (maxdiff > 0.1 and effective size > 300). The best fitting model for the nt alignment determined by jModelTest 2 (*Darriba et al., 2012*) was the GTR + G + I, and the phylogenetic inference was carried out in a similar way as the aa analysis. Trees and alignments have been deposited to TreeBase (ID 19254).

### Partitioned phylogeny

Partitions and their corresponding best-fitting models were identified using PartitionFinder (*Lanfear et al., 2012*) with the relaxed clustering algorithm, checking the top 1% schemes. ML analysis was conducted on the partitioned datasets using RAxML v7.2.6 (*Stamatakis, 2006*) with 100 bootstrap replicates. The partitions identified by Partition finder were also used for Bayesian inference using MrBayes v3.2.3 (*Ronquist & Huelsenbeck, 2003*) with 4 runs, 2 million generations saving topologies every 1,000 generations and discarding the first 25% generations as burn-in.

### Concordance factor estimation

Concordance factors were estimated on the 291 individual topologies inferred by MrBayes v3.2.3 (*Ronquist & Huelsenbeck, 2003*) (four runs, 2 million generations 25% burn-in) using BUCKy (*Ane et al., 2006*) with default settings ( $\alpha = 1$ ).

## RESULTS AND DISCUSSION

### Analyses of the concatenated nucleotide supermatrix

The data matrix for the 15 taxa (*Table S1*) comprised 291 nuclear protein-coding genes, 263 of which have functional annotations, the other 28 coding for unknown proteins (*Table S5*) that probably correspond to cnidarian- or anthozoan-specific genes. The final alignment of the nucleotide sequences contained 370,809 positions, around 30 times longer than in the previously published phylogenies based on whole mitochondrial genomes (*Kitahara et al., 2014*). A ML phylogeny was inferred using the best fitting model (GTR + G + I), resulting in a topology consistent with scleractinian monophyly and with a bootstrap support of 100% for every node (*Table 1*). This result is consistent with analyses based on the nucleotide sequences of mitochondrial protein-coding genes (*Fukami et al., 2008; Kitahara et al., 2010; Kitahara et al., 2014*).

**Table 1** Support values of critical nodes (see Fig. 1B for the numbering of nodes) for ML and BI analyses inferred using unpartitioned and partitioned phylogenetic analyses of amino acid and nucleotide data. The best fitting substitution model for each concatenated unpartitioned dataset is indicated; the best fitting models for the partitioned phylogenies are detailed in Table S4. Scleractinian monophyly is fully supported by all the analyses.

Data type	Amino acid dataset				Nucleotide dataset				
	Maximum likelihood analyses		Bayesian inference		Maximum likelihood analysis			Bayesian inference	
Supporting value	Bootstrap support(%)		Posterior probability		Bootstrap support(%)			Posterior probability	
Matrix type	Concatenated matrix	Partitions	Concatenated matrix	Partitions	Concatenated matrix	Partitions by gene	Partition by codon	Partitions by gene	Partition by codon
Selected nodes/ substitution model	JTT + G + I	153 subsets	JTT + G + I	15	GTR + G + I	75 subsets	106 subsets	75 subsets	106 subsets
1 (Corallimorpharia, Scleractinia)	100	100	1	1	100	100	100	1	1
2 (Corallimorpharia)	100	100	1	1	100	100	100	1	1
3 (Robusta)	100	100	1	1	100	100	100	1	1
4 (Complexa)	100	100	1	1	100	100	100	1	1

To take into account the fact that different regions of the alignment can evolve at different rates and according to different models, the aa supermatrix was partitioned using PartitionFinder, by gene and by codon, resulting in 75 and 106 partitions respectively. ML and BI phylogenies were then inferred for each partitioning scheme, all strongly supporting scleractinian monophyly (Table 1). Thus, both unpartitioned and partitioned analyses of the nucleotide supermatrix consistently support the monophyly of Scleractinia. These findings corroborate a number of previous studies (e.g., Fukami *et al.*, 2008; Kitahara *et al.*, 2010; Kitahara *et al.*, 2014; Lin *et al.*, 2014; Stolarski *et al.*, 2011). However, as analyses of mitochondrial protein-coding sequences at the amino acid and nucleotide levels result in distinct tree topologies (Kitahara *et al.*, 2014; Medina *et al.*, 2006), ML and BI analyses were also conducted based on the aa sequences of the nuclear protein-coding genes.

### Analyses of the concatenated amino acid supermatrix

The concatenated amino-acid alignment consisted of 122,170 positions. Both ML and BI methods generated phylogenetic trees in which all nodes were strongly supported (Table 1). In the ML reconstruction, all the bootstrap values were >70% and most nodes had 100% support. In the BI analysis, the posterior probability for all the nodes was 100%. Partitioning of the amino acid alignment resulted in 153 subsets. ML and BI phylogenies were then inferred based on the best substitution model for each partition (Table S6) and also strongly supported the monophyly of scleractinians (Table 1). In summary, unpartitioned and partitioned analysis of nuclear markers at the amino-acid and nucleotide level are congruent. The major implication of these analyses of nuclear sequence data is that corallimorpharians are not scleractinians that have undergone skeleton loss (Fig. 1A). However, a ML tree based on the mitochondrial proteins of a set of species close to those used for nuclear markers recovered the naked coral topology (Fig. S2), consistent with the results reported by Kitahara *et al.* (2014), which could be a result of the sequence composition biases in these mitochondrial genomes.

### Sequence composition

In the case of mt genomes, significant differences in the base composition of protein coding genes were observed between corallimorpharians, robust and complex corals, resulting in different patterns of codon usage and amino acid composition across the various lineages (Kitahara *et al.*, 2014). In order to investigate the potential for compositional bias to affect the topology recovered for nuclear protein-coding genes, base composition was estimated for each of the 15 taxa included in the present analyses (Table S4). Base composition was generally similar across all the hexacorallian groups, but the octocoral (A + T) content (57.96%) was significantly higher. Within the Hexacorallia, the complex scleractinian clade had the highest (A + T) content (56.5%) and, consequently, a higher proportion of (A + T)-rich aa (FYMINK). The remaining groups (i.e., Actiniaria and Scleractinia [Robusta clade]) displayed an overall (A + T) content between 55.00 and 55.95% and no major differences between FYMINK and (G + C)-rich aa (GARP) (Fig. S3). The thymine and cytosine contents of nuclear protein coding genes of Robusta differed slightly (<1%) across all three codon positions compared to other scleractinians. The nuclear

protein-coding genes of Actinaria, Corallimorpharia and Scleractinia have therefore a very similar composition (Fig. S3). In comparison to proteins encoded by the mitochondrial genome, nuclear-encoded proteins of anthozoans contain, in general, more lysine (7% vs 2%), aspartic acid (5.5% vs 2%), and glutamic acid (7% vs 2.5%) residues, but significantly less phenylalanine (4% vs 8%, and 13% in robust corals).

Major differences in the composition of mitochondrial protein-coding genes at both the nucleotide and amino acid levels support the idea that the mitochondrial genomes of robust corals are evolving at a different rate to those of other hexacorallians (Aranda *et al.*, 2012; Fukami & Knowlton, 2005; Kitahara *et al.*, 2014). However, no such compositional biases appear to hold for nuclear protein-coding genes, implying that these nuclear sequences are more appropriate sources of phylogenetic information than mitochondrial data (Kitahara *et al.*, 2014).

### Analysis of individual gene topologies

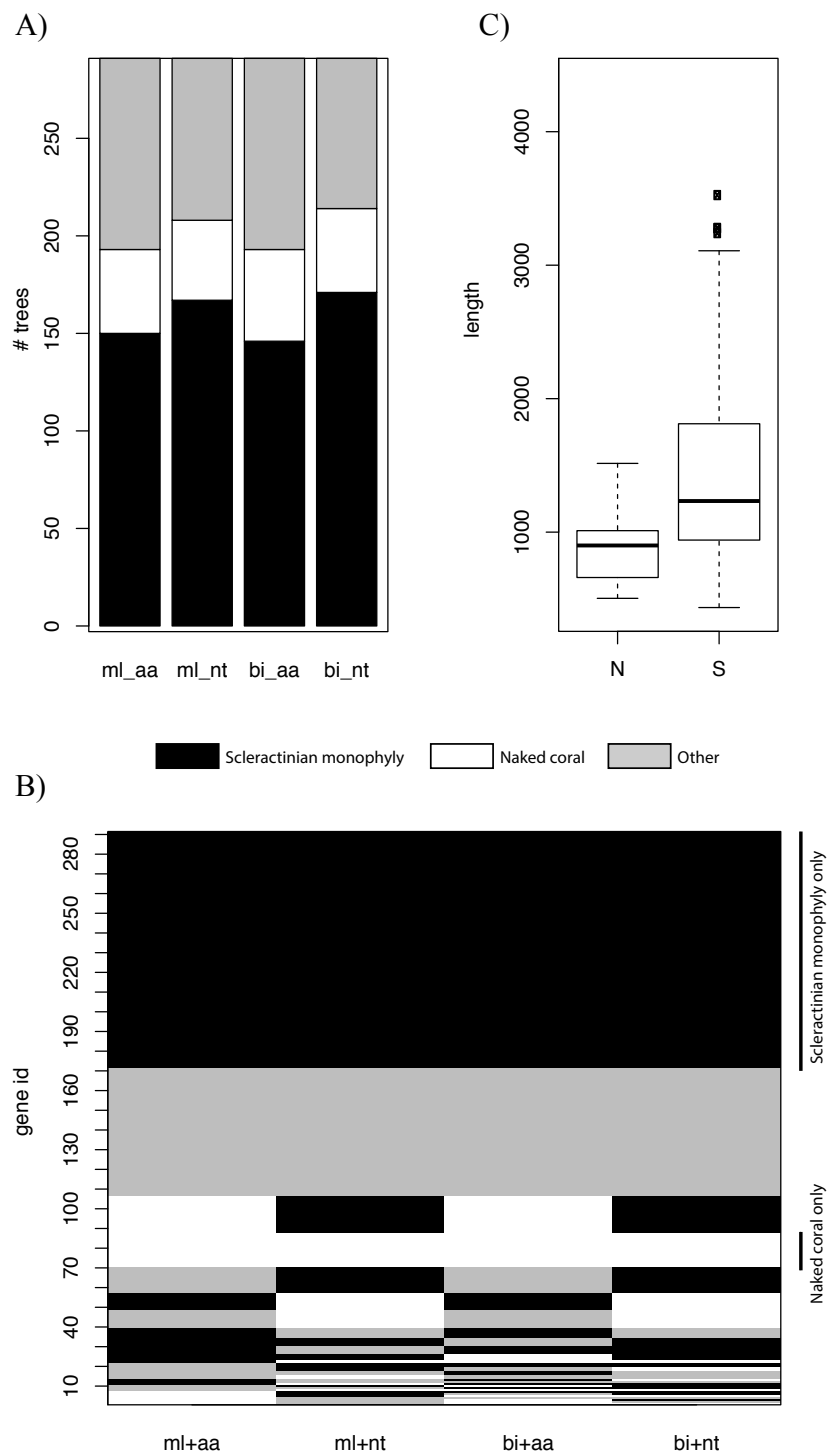
Genes at different genomic locations may have distinct evolutionary histories, and thus different topologies may be recovered (Akanni *et al.*, 2014; Ane *et al.*, 2006; Pisani, Cotton & Macinerney, 2007). We constructed trees based on individual genes using ML and BI and explored the distribution of the various topologies. For all types of inference, scleractinian monophyly was recovered by the majority of genes, while only a small proportion of the trees were concordant with the naked coral hypothesis (Fig. 2A). The patterns of topologies for each tree across all types of inference was then investigated. Again, the most common pattern was genes producing scleractinian monophyly across all types of inference, while only a few genes were consistent with the naked coral hypothesis for all the reconstruction methods (Fig. 2B). A sizeable proportion of genes did not agree with either scenario, as can be expected when inferring such deep relationships based on single markers. A search for systematic differences between the genes supporting the two competing of topology did not reveal any differential Gene Ontology enrichment. However, genes supporting the naked coral topology for all types of inference were found to be significantly shorter than genes supporting the alternative topology (Fig. 2C). This suggests that genes supporting the naked coral hypothesis might be too small for the inference of the correct topology.

Bayesian Concordance Analysis was then used to evaluate the contribution of individual genes to the final topology in the BI trees. High concordance factor (CF) values on branches indicate support from multiple genes (Weisrock, 2012). The primary topology recovered by concordance analysis supported scleractinian monophyly (Fig. S4). In particular, the branches descending from the split between Scleractinia and Corallimorpharia have mean sample-wise CF values of 0.627 and 0.756 respectively. This result is consistent with the unpartitioned and partitioned analyses of the concatenated sequence data and therefore indicates broad support across the sampled nuclear genes for the monophyly of scleractinians.

### Are corallimorpharians naked corals?

Comparisons based on mitochondrial genomic architecture (Lin *et al.*, 2014) suggest that corallimorpharians are derived from an azooxanthellate ancestor. Anatomical similarities





**Figure 2** (A) Numbers of trees based on individual genes supporting scleractinian monophyly, naked coral or other topologies for maximum likelihood (ml) and Bayesian inference (bi) for amino-acid (aa) and nucleotide alignments (nt). The majority of trees are consistent with scleractinian monophyly, whereas few support the naked corals scenario. (B) Summary of the concordance of phylogenetic inference for each gene. Each line represents a gene. (continued on next page...)

**Figure 2 (...continued)**

The main pattern (black lines) represents genes that are fully consistent with scleractinian monophyly, whilst only a small proportion of genes consistently agree with the naked coral hypothesis (white lines). The checkered lines correspond to genes producing topologies that are not consistent across the different types of inference. The patterns are sorted from most abundant at the top of the figure to least abundant at the bottom. (C) Distribution of sequence lengths for genes consistent with scleractinian monophyly (S, black lines in B) and the naked coral hypothesis (N, white lines B). The sequences of the genes consistent with scleractinian monophyly are significantly longer (Mann Whitney  $U$  test  $p = 0.0004$ ).

between scleractinians and corallimorpharians support a close relationship between them, but corallimorpharians not only lack mineralized skeletons, but also differ from scleractinians in terms of several characters—for example: the condition of the mesoglea, tentacular arrangement and the presence of homotrachs in the tentacles (*Den Hartog, 1980*). Systematically, the taxonomic rank of Corallimorpharia has been controversial (*Budd et al., 2010; Daly, Fautin & Cappola, 2003; Den Hartog, 1980; Medina et al., 2006; Romano & Cairns, 2000*). The phylogenomic analyses presented here provide strong support for scleractinian monophyly, and allow rejection of the idea that the corallimorpharian lineage was derived from corals by skeleton loss. The analyses supporting this latter idea were based on amino acid sequence data from mitochondrial genomes (*Medina et al., 2006*), but it is now clear there are fundamental problems in using mitochondrial data to infer phylogenetic relationships amongst hexacorallians (*Kitahara et al., 2014*), as is also the case in beetles (*Sheffield et al., 2009*) and some groups of mammals (*Huttley, 2009*).

### Insights into coral evolution

Taking into account the fossil and published molecular data (*Kiessling, Simpson & Foote, 2010; Stolarski et al., 2011*), the analyses above imply that the ability to secrete a skeleton was acquired early in scleractinian evolution, but was followed by multiple origins of skeleton complexity in various subclades (*Romano & Cairns, 2000*). The Paleozoic fossil record (*Ezaki, 1997; Ezaki, 1998; Scrutton, 1993; Scrutton & Clarkson, 1991*) and molecular data (*Stolarski et al., 2011*) both imply that the earliest scleractinians were solitary and inhabited deep water and therefore lacked photosynthetic symbionts. The sudden appearance of highly diversified forms of Scleractinia about 14 Ma after the end-Permian extinction (the “Great Dying” (*Roniewicz & Morycowa, 1993; Stanley, 2003; Veron, 1995; Wells, 1956*)) might be explained by multiple independent origins from deep-water ancestors (e.g., the family Agariciidae (*Kitahara et al., 2012*)). It thus appears likely that the acquisition of photosynthetic symbionts and the development of coloniality have probably both occurred independently on multiple occasions (but see *Barbeitos, Romano & Lasker, 2010*), resulting not only in a wide range of skeletal phenotypes but also in habitat expansion, which has played important roles in the formation of shallow-water reefs.

It has been demonstrated that, when maintained under acidic conditions (pH7.3–7.6), at least some corals can survive for 12 months after undergoing skeleton loss, recovering fully after return to normal seawater (*Fine & Tchernov, 2007*). One interpretation of these experiments is that, during evolution, the coral lineage might have been able to alternate between soft and skeletonized forms, potentially explaining the gaps in the fossil record. However, the fact that corallimorpharians are not derived from corals, and the monophyly

of extant Scleractinia, suggests otherwise—that skeleton-less corals are not viable on evolutionary time scales. This has important implications for the future of the coral lineage—the evolutionary resilience of the Scleractinia may have depended in the past on deep sea refugia, as most of the “reef crises” have coincided with rapid increases in both OA and sea surface temperature (*Pandolfi et al., 2011*). Deep-sea corals would have escaped the challenges of high SST, thus the coral lineage may have been able to re-establish itself in the shallows when more favourable conditions returned. At the present time, unprecedented rates of increase in OA and SST are occurring concurrently with massive disruption of deep-sea habitats caused by deep sea trawling, prospecting and mining (*Guinotte et al., 2006; Ramirez-Llodra et al., 2011; Barbier et al., 2014*). Is the resilience of the Scleractinia as a lineage therefore at risk?

## ACKNOWLEDGEMENTS

The authors thank Allen Collins and an anonymous reviewer for their valuable comments on the manuscript, Mr. Chris Benstead (Reef HQ Aquarium), Dr. Joshus Madin (Macquarie University), Mr. Chao-Yang Kuo (James Cook University) for the assistance with sampling corallimorpharians and field logistics.

## ADDITIONAL INFORMATION AND DECLARATIONS

### Funding

This work was supported by ARC CoE CE140100020. MVK received postdoctoral support (FAPESP # 2011/17537-1) from the São Paulo Research Foundation. The funders had no role in study design, data collection and analysis, decision to publish, or preparation of the manuscript.

### Grant Disclosures

The following grant information was disclosed by the authors:

ARC CoE: CE140100020.

São Paulo Research Foundation: FAPESP # 2011/17537-1.

### Competing Interests

The authors declare there are no competing interests.

### Author Contributions

- Mei Fang Lin and Sylvain Forêt conceived and designed the experiments, performed the experiments, analyzed the data, contributed reagents/materials/analysis tools, wrote the paper, prepared figures and/or tables, reviewed drafts of the paper.
- Wen Hwa Chou performed the experiments, analyzed the data, contributed reagents/materials/analysis tools, reviewed drafts of the paper.
- Marcelo V. Kitahara and David John Miller conceived and designed the experiments, analyzed the data, contributed reagents/materials/analysis tools, wrote the paper, reviewed drafts of the paper.

- Chao Lun Allen Chen conceived and designed the experiments, performed the experiments, contributed reagents/materials/analysis tools, reviewed drafts of the paper.

### DNA Deposition

The following information was supplied regarding the deposition of DNA sequences:

The raw reads and the transcriptome assemblies have been deposited to NCBI under BioProject [PRJNA313487](https://www.ncbi.nlm.nih.gov/bioproject/PRJNA313487).

### Data Availability

The following information was supplied regarding data availability:

TreeBASE: ID [19254](https://www.treebase.org/treebase/id/19254).

### Supplemental Information

Supplemental information for this article can be found online at <http://dx.doi.org/10.7717/peerj.2463#supplemental-information>.

## REFERENCES

- Akanni WA, Creevey CJ, Wilkinson M, Pisani D. 2014. L.U.St: a tool for approximated maximum likelihood supertree reconstruction. *BMC Bioinformatics* **15**:183 DOI [10.1186/1471-2105-15-183](https://doi.org/10.1186/1471-2105-15-183).
- Ane C, Larget B, Baum DA, Smith SD, Rokas A. 2006. Bayesian estimation of concordance among gene trees. *Molecular Biology and Evolution* **24**:412–426 DOI [10.1093/molbev/msl170](https://doi.org/10.1093/molbev/msl170).
- Aranda M, DeSalvo MK, Bayer T, Medina M, Voolstra C. 2012. Evolutionary insights into scleractinian corals using comparative genomic hybridizations. *BMC Genomics* **13**:501 DOI [10.1186/1471-2164-13-501](https://doi.org/10.1186/1471-2164-13-501).
- Barbeitos MS, Romano SL, Lasker HR. 2010. Repeated loss of coloniality and symbiosis in scleractinian corals. *Proceedings of the National Academy of Sciences of the United States of America* **107**:11877–11882 DOI [10.1073/pnas.0914380107](https://doi.org/10.1073/pnas.0914380107).
- Barbier EB, Moreno-Mateos D, Rogers AD, Aronson J, Pendleton L, Danovaro R, Henry LA, Morato T, Ardron J, Van Dover CL. 2014. Protect the deep sea. *Nature* **505**:475–477 DOI [10.1038/505475a](https://doi.org/10.1038/505475a).
- Budd AF, Romano SL, Smith ND, Barbeitos MS. 2010. Rethinking the phylogeny of scleractinian corals: a review of morphological and molecular data. *Integrative and Comparative Biology* **50**:411–427 DOI [10.1093/icb/icq062](https://doi.org/10.1093/icb/icq062).
- Capella-Gutierrez S, Silla-Martinez JM, Gabaldon T. 2009. trimAl: a tool for automated alignment trimming in large-scale phylogenetic analyses. *Bioinformatics* **25**:1972–1973 DOI [10.1093/bioinformatics/btp348](https://doi.org/10.1093/bioinformatics/btp348).
- Chapman JA, Kirkness EF, Simakov O, Hampson SE, Mitros T, Weinmaier T, Rattei T, Balasubramanian PG, Borman J, Busam D, Disbennett K, Pfannkoch C, Sumin N, Sutton GG, Viswanathan LD, Walenz B, Goodstein DM, Hellsten U, Kawashima T, Prochnik SE, Putnam NH, Shu SQ, Blumberg B, Dana CE, Gee L, Kibler DF, Law L, Lindgens D, Martinez DE, Peng JS, Wigge PA, Bertulat B, Guder C, Nakamura Y,

- Ozbek S, Watanabe H, Khalturin K, Hemmrich G, Franke A, Augustin R, Fraune S, Hayakawa E, Hayakawa S, Hirose M, Hwang JS, Ikeo K, Nishimiya-Fujisawa C, Ogura A, Takahashi T, Steinmetz PRH, Zhang XM, Aufschnaiter R, Eder MK, Gorny AK, Salvenmoser W, Heimberg AM, Wheeler BM, Peterson KJ, Boettger A, Tischler P, Wolf A, Gojobori T, Remington KA, Strausberg RL, Venter JC, Technau U, Hobmayer B, Bosch TCG, Holstein TW, Fujisawa T, Bode HR, David CN, Rokhsar DS, Steele RE. 2010. The dynamic genome of Hydra. *Nature* 464:592–596 DOI 10.1038/nature08830.
- Chen CA, Wallace CC, Jackie W. 2002. Analysis of the mitochondrial 12S rRNA gene supports a two-clade hypothesis of the evolutionary history of scleractinian corals. *Molecular Phylogenetics and Evolution* 23:137–149 DOI 10.1016/S1055-7903(02)00008-8.
- Cohen AL, Holcomb M. 2009. Why corals care about ocean acidification—uncovering the mechanism. *Oceanography* 22:118–128 DOI 10.5670/oceanog.2009.102.
- Daly M, Brugler MR, Cartwright P, Collins A, Dawson MN, Fautin DG, France SC, McFadden CS, Opresko DM, Rodriguez E, Romano SL, Stake JL. 2007. The phylum Cnidaria: a review of phylogenetic patterns and diversity 300 years after Linnaeus. *Zootaxa* 1668:127–182.
- Daly M, Fautin DG, Cappola VA. 2003. Systematics of the Hexacorallia (Cnidaria : Anthozoa). *Zoological Journal of the Linnean Society* 139:419–437 DOI 10.1046/j.1096-3642.2003.00084.x.
- Darriba D, Taboada GL, Doallo R, Posada D. 2012. jModelTest 2: more models, new heuristics and parallel computing. *Nature Methods* 9:772 DOI 10.1038/nmeth.2109.
- Den Hartog JC. 1980. Caribbean shallow water Corallimorpharia. *Journal Zoologische Verhandlungen* 176(1):1–83.
- Done TJ. 1999. Coral community adaptability to environmental change at the scales of regions, reefs and reef zones. *American Zoologist* 39:66–79 DOI 10.1093/icb/39.1.66.
- Ebersberger I, Strauss S, Von Haeseler A. 2009. HaMStR: profile hidden markov model based search for orthologs in ESTs. *BMC Evolutionary Biology* 9:157 DOI 10.1186/1471-2148-9-157.
- Ezaki Y. 1997. The Permian coral Numidiaphyllum: new insights into anthozoan phylogeny and Triassic scleractinian origins. *Palaeontology* 40:1–40.
- Ezaki Y. 1998. Paleozoic scleractinia: progenitors or extinct experiments? *Paleobiology* 24:227–234.
- Ezaki Y. 2000. Palaeoecological and phylogenetic implications of a new scleractinian genus from Permian sponge reefs, South China. *Paleontology* 78:84–97.
- Fine M, Tchernov D. 2007. Scleractinian coral species survive and recover from decalcification. *Science* 315:1811 DOI 10.1126/science.1137094.
- Fukami H, Chen CA, Budd AF, Collins A, Wallace C, Chuang YY, Chen C, Dai CF, Iwao K, Sheppard C, Knowlton N. 2008. Mitochondrial and nuclear genes suggest that stony corals are monophyletic but most families of stony corals are not (Order Scleractinia, Class Anthozoa, Phylum Cnidaria). *PLoS ONE* 3:e3222 DOI 10.1371/journal.pone.0003222.

- Fukami H, Knowlton N. 2005.** Analysis of complete mitochondrial DNA sequences of three members of the *Montastraea annularis* coral species complex (Cnidaria, Anthozoa, Scleractinia). *Coral Reefs* 24:410–417 DOI 10.1007/s00338-005-0023-3.
- Grabherr MG, Haas BJ, Yassour M, Levin JZ, Thompson DA, Amit I, Adiconis X, Fan L, Raychowdhury R, Zeng Q, Chen Z, Mauceli E, Hacohen N, Gnirke A, Rhind N, Di Palma F, Birren BW, Nusbaum C, Lindblad-Toh K, Friedman N, Regev A. 2011.** Full-length transcriptome assembly from RNA-Seq data without a reference genome. *Nature Biotechnology* 29:644–652 DOI 10.1038/nbt.1883.
- Guinotte JM, Orr J, Cairns S, Freiwald A, Morgan L, George R. 2006.** Will human-induced changes in seawater chemistry alter the distribution of deep-sea scleractinian corals? *Frontiers in Ecology and the Environment* 4:141–146 DOI 10.1890/1540-9295(2006)004[0141:WHCISC]2.0.CO;2.
- Hoegh-Guldberg O, Mumby PJ, Hooten AJ, Steneck RS, Greenfield P, Gomez E, Harvell CD, Sale PF, Edwards AJ, Caldeira K, Knowlton N, Eakin CM, Iglesias-Prieto R, Muthiga N, Bradbury RH, Dubi A, Hatziolos ME. 2007.** Coral reefs under rapid climate change and ocean acidification. *Science* 318:1737–1742 DOI 10.1126/science.1152509.
- Honisch B, Ridgwell A, Schmidt DN, Thomas E, Gibbs SJ, Sluijs A, Zeebe R, Kump L, Martindale RC, Greene SE, Kiessling W, Ries J, Zachos JC, Royer DL, Barker S, Marchitto Jr TM, Moyer R, Pelejero C, Ziveri P, Foster GL, Williams B. 2012.** The geological record of ocean acidification. *Science* 335:1058–1063 DOI 10.1126/science.1208277.
- Hughes L. 2003.** Climate change and Australia: trends, projections and impacts. *Austral Ecology* 28:423–443 DOI 10.1046/j.1442-9993.2003.01300.x.
- Hughes TP, Baird AH, Bellwood DR, Card M, Connolly SR, Folke C, Grosberg R, Hoegh-Guldberg O, Jackson JBC, Kleypas J, Lough JM, Marshall P, Nystrom M, Palumbi SR, Pandolfi JM, Rosen B, Roughgarden J. 2003.** Climate change, human impacts, and the resilience of coral reefs. *Science* 301:929–933 DOI 10.1126/science.1085046.
- Huttley G. 2009.** Do genomic datasets resolve the correct relationship among the placental, marsupial and monotreme lineages? *Australian Journal of Zoology* 57:167–174 DOI 10.1071/ZO09049.
- Katoh K, Standley DM. 2013.** MAFFT multiple sequence alignment software version 7: improvements in performance and usability. *Molecular Biology and Evolution* 30:772–780 DOI 10.1093/molbev/mst010.
- Kiessling W, Simpson C, Foote M. 2010.** Reefs as cradles of evolution and sources of biodiversity in the phanerozoic. *Science* 327:196–198 DOI 10.1126/science.1182241.
- Kitahara MV, Cairns SD, Stolarski J, Blair D, Miller DJ. 2010.** A comprehensive phylogenetic analysis of the Scleractinia (Cnidaria, Anthozoa) based on mitochondrial CO1 sequence data. *PLoS ONE* 5:e11490 DOI 10.1371/journal.pone.0011490.
- Kitahara MV, Lin M-F, Foret S, Huttley G, Miller DJ, Chen CA. 2014.** The “naked coral” hypothesis revisited—evidence for and against scleractinian monophyly. *PLoS ONE* 9:e94774 DOI 10.1371/journal.pone.0094774.g001.

- Kitahara MV, Stolarski J, Cairns SD, Benzoni F, Stake JL, Miller DJ. 2012.** The first modern solitary Agariciidae (Anthozoa, Scleractinia) revealed by molecular and microstructural analysis. *Invertebrate Systematics* **26**:303–315 DOI [10.1071/is11053](https://doi.org/10.1071/is11053).
- Lanfear R, Calcott B, Ho SYW, Guindon S. 2012.** PartitionFinder: combined selection of partitioning schemes and substitution models for phylogenetic analyses. *Molecular Biology and Evolution* **29**:1695–1701 DOI [10.1093/molbev/mss020](https://doi.org/10.1093/molbev/mss020).
- Lartillot N, Rodrigue N, Stubbs D, Richer J. 2013.** PhyloBayes MPI: phylogenetic reconstruction with infinite mixtures of profiles in a parallel environment. *Systematic Biology* **62**:611–615 DOI [10.1093/sysbio/syt022](https://doi.org/10.1093/sysbio/syt022).
- Li W, Godzik A. 2006.** Cd-hit: a fast program for clustering and comparing large sets of protein or nucleotide sequences. *Bioinformatics* **22**:1658–1659 DOI [10.1093/bioinformatics/btl158](https://doi.org/10.1093/bioinformatics/btl158).
- Lin MF, Kitahara MV, Luo H, Tracey D, Geller J, Fukami H, Miller DJ, Chen CA. 2014.** Mitochondrial genome rearrangements in the Scleractinia/Corallimorpharia Complex: implications for coral phylogeny. *Genome Biology and Evolution* **6**:1086–1095 DOI [10.1093/gbe/evu084](https://doi.org/10.1093/gbe/evu084).
- Medina M, Collins AG, Takaoka TL, Kuehl JV, Boore JL. 2006.** Naked corals: skeleton loss in Scleractinia. *Proceedings of the National Academy of Sciences of the United States of America* **103**:9096–9100 DOI [10.1073/pnas.0602444103](https://doi.org/10.1073/pnas.0602444103).
- Moberg F, Folke C. 1999.** Ecological goods and services of coral reef ecosystems. *Ecological Economics* **29**:215–233 DOI [10.1016/S0921-8009\(99\)00009-9](https://doi.org/10.1016/S0921-8009(99)00009-9).
- Pandolfi JM, Connolly SR, Marshall DJ, Cohen AL. 2011.** Projecting coral reef futures under global warming and ocean acidification. *Science* **333**:418–422 DOI [10.1126/science.1204794](https://doi.org/10.1126/science.1204794).
- Pisani D, Cotton JA, MacInerney JO. 2007.** Supertrees disentangle the chimerical origin of eukaryotic genomes. *Molecular Biology and Evolution* **24**:1752–1760 DOI [10.1093/molbev/msm095](https://doi.org/10.1093/molbev/msm095).
- Putnam NH, Srivastava M, Hellsten U, Dirks B, Chapman J, Salamov A, Terry A, Shapiro H, Lindquist E, Kapitonov VV, Jurka J, Genikhovich G, Grigoriev IV, Lucas SM, Steele RE, Finnerty JR, Technau U, Martindale MQ, Rokhsar DS. 2007.** Sea anemone genome reveals ancestral eumetazoan gene repertoire and genomic organization. *Science* **317**:86–94 DOI [10.1126/science.1139158](https://doi.org/10.1126/science.1139158).
- Ramirez-Llodra E, Tyler PA, Baker MC, Bergstad OA, Clark MR, Escobar E, Levin LA, Menot L, Rowden AA, Smith CR, Van Dover CL. 2011.** Man and the last great wilderness: human impact on the deep sea. *PLoS ONE* **6**:e22588 DOI [10.1371/journal.pone.0022588](https://doi.org/10.1371/journal.pone.0022588).
- Romano SL, Cairns SD. 2000.** Molecular phylogenetic hypotheses for the evolution of scleractinian corals. *Bulletin of Marine Science* **67**:1043–1068.
- Romano S, Palumbi S. 1996.** Evolution of scleractinian corals inferred from molecular systematics. *Science* **271**:640–642 DOI [10.1126/science.271.5249.640](https://doi.org/10.1126/science.271.5249.640).
- Roniewicz E, Morycowa E. 1993.** Evolution of the Scleractinia in the light of microstructural data. *Courier Forschungsinstitut Senckenberg* **164**:233–240.

- Ronquist F, Huelsenbeck JP. 2003.** MrBayes 3: Bayesian phylogenetic inference under mixed models. *Bioinformatics* **19**:1572–1574 DOI [10.1093/bioinformatics/btg180](https://doi.org/10.1093/bioinformatics/btg180).
- Scrutton CT. 1993.** New kilbuchophyllid corals from the Ordovician of the Southern Uplands, Scotland. *Courier Forschungsinstitut Senckenberg* **164**:153–158.
- Scrutton CT, Clarkson ENK. 1991.** A new scleractinian-like coral from the Ordovician of the Southern Uplands, Scotland. *Palaeontology* **34**:179–194.
- Sheffield NC, Song H, Cameron SL, Whiting MF. 2009.** Nonstationary evolution and compositional heterogeneity in beetle mitochondrial phylogenomics. *Systematic Biology* **58**:381–394 DOI [10.1093/sysbio/syp037](https://doi.org/10.1093/sysbio/syp037).
- Shinzato C, Shoguchi E, Kawashima T, Hamada M, Hisata K, Tanaka M, Fujie M, Fujiwara M, Koyanagi R, Ikuta T, Fujiyama A, Miller DJ, Satoh N. 2011.** Using the *Acropora digitifera* genome to understand coral responses to environmental change. *Nature* **476**:320–323 DOI [10.1038/nature10249](https://doi.org/10.1038/nature10249).
- Stamatakis A. 2006.** RAxML-VI-HPC: maximum likelihood-based phylogenetic analyses with thousands of taxa and mixed models. *Bioinformatics* **22**:2688–2690 DOI [10.1093/bioinformatics/btl446](https://doi.org/10.1093/bioinformatics/btl446).
- Stanley JGD. 2003.** The evolution of modern corals and their early history. *Earth-Science Reviews* **60**:195–225 DOI [10.1016/S0012-8252\(02\)00104-6](https://doi.org/10.1016/S0012-8252(02)00104-6).
- Stanley GDJ, Fautin DG. 2001.** The origins of modern corals. *Science* **291**:1913–1914 DOI [10.1126/science.1056632](https://doi.org/10.1126/science.1056632).
- Stolarski J, Kitahara MV, Miller DJ, Cairns SD, Mazur M, Meibom A. 2011.** The ancient evolutionary origins of Scleractinia revealed by azooxanthellate corals. *BMC Evolutionary Biology* **11**:316 DOI [10.1186/1471-2148-11-316](https://doi.org/10.1186/1471-2148-11-316).
- Veron JEN. 1995.** *Corals in space and time: the biogeography and evolution of the Scleractinia*. Sydney: University of New South Wales Press.
- Weisrock DW. 2012.** Concordance analysis in mitogenomic phylogenetics. *Molecular Phylogenetics and Evolution* **65**(1):194–202 DOI [10.1016/j.ympev.2012.06.003](https://doi.org/10.1016/j.ympev.2012.06.003).
- Wells J. 1956.** *Scleractinia*. Lawrence: University of Kansas Press.
- Xia X. 2013.** DAMBE5: a comprehensive software package for data analysis in molecular biology and evolution. *Molecular Biology and Evolution* **30**:1720–1728 DOI [10.1093/molbev/mst064](https://doi.org/10.1093/molbev/mst064).