



Sea turtle rehabilitation success increases with body size and differs among species

Linda Baker^{1,2}, Will Edwards^{1,2}, David A. Pike^{2,3,*}

¹College of Marine and Environmental Sciences, James Cook University, Cairns, Queensland 4878, Australia

²Centre for Tropical Environmental & Sustainability Science, James Cook University, Cairns, Queensland 4870, Australia

³College of Marine and Environmental Sciences, James Cook University, Townsville, Queensland 4811, Australia

ABSTRACT: Wildlife rehabilitation can contribute to species conservation by releasing healthy individuals back into the wild and educating the public about threatening processes. Rehabilitation has substantial financial costs, however, and thus it is important to understand the success rates of these potential conservation management actions. We quantified the success rates for 1700 sea turtles admitted to rehabilitation facilities in Florida (USA) between 1986 and 2004. Rehabilitation success was low: 61.5% of turtles died in rehabilitation and only 36.8% were released back into the wild. A further 1.6% of turtles were maintained in captivity permanently due to the severe nature of their injuries. Most mortality occurred early during the rehabilitation process (within a few weeks), and successful rehabilitation often took several months to more than 3 yr. Loggerhead turtles *Caretta caretta* were most likely to survive rehabilitation, followed by Kemp's ridleys *Lepidochelys kempii* and green turtles *Chelonia mydas*; for all 3 species, larger individuals had an increased chance of successful rehabilitation. At face value, the low rates of rehabilitated turtles successfully released back into the wild may contribute only modestly to conservation in terms of contributing to population viability. However, many rehabilitation facilities provide important educational experiences that increase public awareness of the threats facing animals and highlight potential conservation solutions. Media coverage highlighting the release of rehabilitated animals further extends the conservation value of these efforts. Wildlife rehabilitation provides important direct benefits that, combined with social benefits, together may justify the expense and difficulty of rehabilitating individual animals.

KEY WORDS: Animal hospital · Endangered species · Human intervention · Injury · Marine turtle · Public engagement · Sea turtle stranding · Survival · Veterinary care · Wildlife rehabilitation

INTRODUCTION

Wildlife rehabilitation is the process of treating injured, sick or orphaned animals and releasing them back into the wild. As conservation has moved to the forefront of ecology, releasing rehabilitated animals as a way of enhancing wildlife populations is becoming more frequent (Karesh 1995, Cardona et al. 2012, Mestre et al. 2014). These actions have the potential to play significant roles in stabilizing or augmenting wildlife populations, especially those in conservation peril (Karesh 1995). Rehabilitation based on sound conservation and biological principles (Tribe &

Brown 2000, Ferraro & Pattanayak 2006) ensures that available resources can be allocated towards the most effective conservation measures (Tribe & Brown 2000, Ferraro & Pattanayak 2006, Wimberger et al. 2010, Feck & Hamann 2013). In some cases, however, the high costs of rehabilitation or low success rates may be too great to warrant widespread implementation. Thus, understanding the success rates of rehabilitation and how they vary with species biology (e.g. body size, sex) will enhance our ability to gauge how these activities can contribute to conservation.

The primary objective behind wildlife rehabilitation is the welfare of individual animals (Moore et al.

*Corresponding author: david.pike22@gmail.com

2007), which are often accepted into rehabilitation without prioritizing rare or endangered species (Karesh 1995, Tribe & Brown 2000). During catastrophic events, there may be insufficient resources to care for all affected individuals, and decisions may need to be made about which animals to rehabilitate. The financial costs of rehabilitation are large (Karesh 1995, Tribe & Brown 2000, Moore et al. 2007, Feck & Hamann 2013), and in some cases those resources could be more effectively directed towards conservation measures aimed at preventing wildlife injury (Moore et al. 2007). This presents a conflict between public support behind rehabilitating injured wildlife as a conservation measure (reviewed by Feck & Hamann 2013), and how effective rehabilitation actually is for maintaining or increasing population size, compared to the actual costs of other conservation efforts. An added benefit of treating animals in captivity is the potential for positive educational interactions between humans and wildlife, which could contribute to conservation by garnering public support (Tribe & Brown 2000, Moore et al. 2007, Cardona et al. 2012, Feck & Hamann 2013).

The efficacy of rehabilitation programs for mammals and birds has been well reviewed (Karesh 1995, Tribe & Brown 2000, Moore et al. 2007), but evaluations of other fauna are limited (Dodd & Seigel 1991). Sea turtle populations are in decline globally, and integrated conservation efforts are required to prevent extinction (Wallace et al. 2011). Sea turtle rehabilitation is usually achieved through medical management of sick or injured animals by veterinary surgeons in wildlife hospitals (Casal & Orós 2009,

Feck & Hamann 2013). The majority of animals in rehabilitation are taken there because of some previous negative interaction with humans (Tribe & Brown 2000, Feck & Hamann 2013), including entanglement in fishing gear (Allen 2000, Dutton & Squires 2008, Bagarinao 2011), being hit by a boat or propeller and a wide range of other causes (Shaver & Teas 1999, Dutton & Squires 2008, Bagarinao 2011). Current information on the success rates of sea turtle rehabilitation is limited, but suggests that the proportion of animals released back into the wild is low (Haines et al. 2000, Haines & Limpus 2001, Greenland et al. 2004, Greenland & Limpus 2006, 2008, Biddle & Limpus 2011). Records from Queensland, Australia (1999 to 2010) suggest that only 26% of stranded sea turtles found washed up on beaches were successfully rehabilitated and released back into the wild (Table 1). The survival rate of rehabilitated animals once released back into the wild could be lower than that of wild turtles, further reducing overall success rates in terms of the potential for individuals to contribute to the population (Cardona et al. 2012). Widespread rehabilitation of sick or injured turtles currently supplements other conservation efforts (IUCN 1995, Casal & Orós 2009, Goldberg et al. 2011, Mestre et al. 2014), but we still have a poor understanding of the conservation potential of rehabilitation in terms of numbers of healthy animals released (even without knowing their longer-term individual survival; Cardona et al. 2012, Mestre et al. 2014).

To fill this knowledge gap, we analysed data on injured sea turtles admitted into rehabilitation facilities from 1986 to 2004 in Florida (USA) to determine

Table 1. Yearly data on rehabilitated sea turtles stranded along the Queensland, Australia, coast between 1999 and 2010. Data are summaries from the Queensland marine wildlife stranding and mortality database (StrandNet; compiled from Haines et al. 2000, Haines & Limpus 2001, Greenland et al. 2004, Greenland & Limpus 2006, 2008, Biddle & Limpus 2011). Raw data were unavailable for analysis

Year	Died during rehabilitation or euthanized	Successfully rehabilitated and released	Unknown rehabilitation outcome	Total turtles	Success rate (proportion)	95% confidence limits	
						Lower	Upper
1999	77	97	0	174	0.557	0.483	0.630
2000	75	61	0	136	0.449	0.366	0.533
2001	29	2	3	60	0.059	0.011	0.188
2002	39	20	1	60	0.333	0.221	0.466
2003	55	16	8	79	0.203	0.122	0.308
2004	26	14	21	61	0.230	0.134	0.350
2005	53	19	11	83	0.229	0.147	0.330
2006	89	25	14	128	0.195	0.134	0.272
2007	145	45	33	223	0.202	0.153	0.259
2008	104	33	52	189	0.175	0.125	0.234
2009	128	40	66	234	0.171	0.127	0.225
2010	92	41	39	172	0.238	0.179	0.307
Total	912	413	248	1573	0.263	0.241	0.285

the overall success rates of rehabilitation, and whether body size, sex or species identity influenced rehabilitation outcome. Understanding the outcomes of rehabilitation is essential because the public often views these as conservation efforts (Feck & Hamann 2013, Mestre et al. 2014).

MATERIALS AND METHODS

Sea turtle stranding and rehabilitation

We used standardized data collected by the Sea Turtle Stranding and Salvage Network (STSSN) in Florida from 1986 to 2004 (Shaver & Teas 1999, Foley et al. 2005), available online at http://ocean.florida.marine.org/mrgis/Description_Layers_Marine.htm#turtle. The STSSN documents marine turtle strandings along the Gulf of Mexico and Atlantic coastlines of the United States. Information about each turtle stranding event, when known, is recorded on a form (e.g. date, location, species, sex, body size; see STSSN Stranding Report at www.sefsc.noaa.gov/species/turtles/strandings.htm), and all live turtles are transported to rehabilitation facilities. Follow-up details entered into the dataset often included the fate of each turtle (died in captivity, euthanized, released, or maintained in captivity indefinitely) and the date of death or release back into the wild (as appropriate).

From 1986 to 2004, a total of 2462 live-stranded sea turtles were taken into rehabilitation, representing all live stranding events recorded in Florida. The dataset did not include sufficient information about the type of injuries that potentially caused the turtle to become stranded to include this variable in the analysis. We used curved carapace length (CCL; measured upon arrival at rehabilitation) as a measure of turtle body size; when straight-line carapace length (SCL) was the only measurement available, we converted this to CCL using Teas' (1993) equation: $SCL = 0.294 + (0.937 \times CCL)$.

Rehabilitation success rates

We calculated the proportion of turtles that died in rehabilitation, were euthanized, were successfully released into the wild, and deemed to have injuries too severe for release and thus were maintained in captivity permanently. Proportional values and their 95% confidence limits were generated using the Agresti-Coull approximation (Agresti & Coull 1998).

To estimate the average amount of time a turtle spent in rehabilitation, we calculated the mean and standard deviation of the number of days spent in rehabilitation. For this analysis, we used the 1700 turtles for which the outcome of rehabilitation (died or survived) and the number of days spent in rehabilitation were known. We used a Mann-Whitney *U*-test to compare the distribution of the number of days spent in rehabilitation between turtles that died versus those that survived.

Impacts of phenotype on rehabilitation outcome

We used generalized linear models (GLMs) implemented in the program R (version 2.15.0; R Development Core Team 2012) to estimate the influence of multiple variables on sea turtle rehabilitation success rates. The response variable, survival, is binomial and describes whether each turtle lived or died. Explanatory variables included species identity, sex, body size, and the duration of rehabilitation (number of days). Because the species we included differed in body size by orders of magnitude, we converted raw CCL measurements of turtles in our study to *Z*-scores to allow us to compare distributions among species (using $n = 1622$ turtles for which body size data were available; Table 2). *Z*-scores ranged from -3 to $+3$, with a value of 0 representing a turtle of average size for the species (i.e. a *Z*-score represents the standardized deviation from a mean of zero), negative values indicating smaller turtles, and positive values indicating larger turtles. This approach also allowed us to test for potential effects of individual body size on survival, such as whether larger turtles were more likely to be successfully rehabilitated.

For analysis of the influence of multiple variables on rehabilitation outcomes, we used the subset of records for which all data were available; common omissions included sex and the outcome of rehabilitation efforts, as well as 2 turtles that were released by vandals and another that escaped during rehabilitation (Table 2). This approach ensures that potentially competing models were refitted with the same sample size each time. Within the subset of records for which all data were available, sample sizes were too low for analysis for 3 species (hawkbill *Eretmochelys imbricata*, $n = 9$; leatherback *Dermochelys coriacea*, $n = 6$; and olive ridley *Lepidochelys olivacea*, $n = 2$). This resulted in a final dataset of 374 individuals, representing green *Chelonia mydas* ($n = 184$), loggerhead *Caretta caretta* ($n = 170$), and Kemp's ridley turtles *Lepidochelys kempii* ($n = 20$).

Table 2. Summary of known variables and associated sample sizes for the standardized data on stranded sea turtles gathered by the Florida Sea Turtle Stranding and Salvage Network between 1986 and 2004

Species	Total no. of turtles	Outcome known	Sex and outcome known	Time and outcome known	Size and outcome known	All variables known
Green	1218	860	241	750	828	184
Loggerhead	931	628	215	565	592	170
Kemp's ridley	186	123	29	108	113	20
Hawksbill	113	76	10	72	76	9
Leatherback	12	11	6	11	11	6
Olive ridley	2	2	2	2	2	2
Total (%)	2462	1700 (69)	503	1508	1622	391 (15.9)

Information theoretic approaches acknowledge that a range of different models may display similar abilities to describe true data. The process thus requires fitting a range of competing models, which are then compared in terms of their explanatory abilities. Akaike's information criterion (AIC) is a measure of information lost in fitting a given model, with the lowest values indicating the best approximation of data. This approach can, however, reveal that multiple models are equally supported descriptions of the true pattern. Final model selection is thus based on the magnitude of the difference in AIC values between models. The best-supported models (i.e. $\Delta AICs$) are those that make up the top 90% of Akaike

weights and have relative deviations from the best model of less than 2 (Burnham & Anderson 1998).

We first developed a global GLM that fitted all explanatory variables: the full model. To determine which variables were required to generate the best approximating model, we used the dredge function in the R package 'MuMIn' (Barto 2012) to produce likelihood estimates for all possible nested models (models including subsets of variables in the global model) and chose the most parsimonious model (or combination of models) based on ΔAIC for small sample sizes ($\Delta AICc$). The response variable was logit-transformed to ensure linearity. Thus, the coefficients associated with the explanatory variables included in the model are returned as log-odds ratios. To produce intuitive results, we transformed coefficient value log-odds to simple odds ratios.

RESULTS

Rehabilitation success rate

Of the 1700 sea turtles with known rehabilitation outcomes, 626 individuals (36.8%) survived and were subsequently released back into the wild, 1047 individuals (55.3%) died in rehabilitation and 27 individuals (1.6%) survived but remained in captivity (Table 2). The mean number of days spent in rehabilitation differed between turtles that died and those that survived ($Z = -24.59$, $p < 0.001$). Turtles that were successfully rehabilitated and released back into the wild spent a greater mean time in rehabilitation than those that died (Fig. 1).

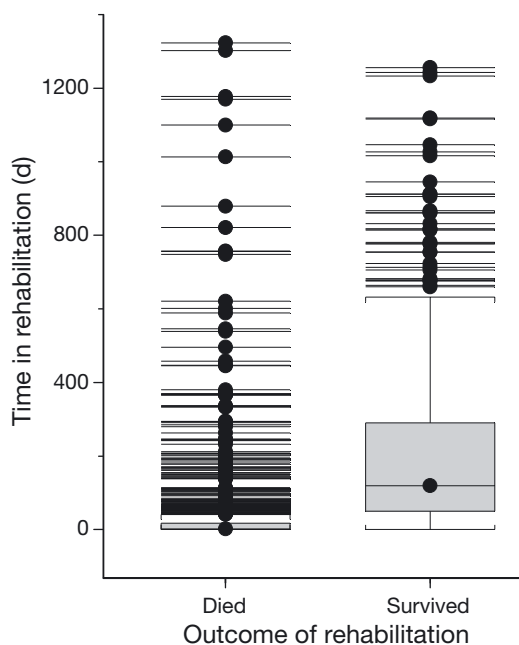


Fig. 1. Number of days spent in treatment by stranded turtles that died during rehabilitation ($n = 884$) or survived ($n = 624$). All turtles were found stranded alive along the Florida coast by the Sea Turtle Stranding and Salvage Network and taken to rehabilitation facilities between 1986 and 2004. Shown are box plots (in grey) with outliers (filled circles and lines)

Impacts of phenotype on rehabilitation outcome

The most parsimonious model (GLM2) included the terms body size, time in rehabilitation and spe-

Table 3. Plausible models for estimating the influence of species, body size (standardized curved carapace length), sex (male or female) and time in rehabilitation (d) on sea turtle rehabilitation success rates. The dataset contains details of turtles stranded in Florida and taken to rehabilitation between 1986 and 2004 ($n = 374$). Akaike's information criterion (AIC) indicated that the most parsimonious generalized linear model (GLM) was GLM2. Odds ratios were transformed from the coefficients (log-odds) calculated by GLM2

Model	Explanatory variables	Coefficients (odds ratio)	df	Deviance	AIC	χ^2	p-value
GLM1							
AIC = 141.5	Species		2	167.70	175.70	38.188	<0.001
	Sex		1	129.51	139.51	0.000	0.987
	Time		1	156.08	166.08	26.573	<0.001
	Standardized size		1	189.75	199.75	60.243	<0.001
GLM2							
AIC = 141.9	Kemp's ridley	1.756139 (5.790618)	2	168.68	174.68	39.174	<0.001
	Loggerhead	3.810844 (45.18856)					
	Time	0.005280 (1.005294)	1	156.14	164.14	26.629	<0.001
	Standardized size	2.244386 (9.434621)	1	191.06	199.06	61.500	<0.001

cies identity (Table 3). GLM2 had a smaller AIC (139.5) compared to the global GLM (GLM1; AIC = 141.5). The difference in AIC between these 2 models is equal to 2, and thus both are equally plausible (Burnham & Anderson 1998). We chose to focus on the model with the lowest AIC. The 14 other possible competing models did not fit our data as strongly (i.e. $\Delta AICc > 2$) (Table 4).

Body size ($\chi^2 = 61.5$, $df = 1$, $p < 0.001$), time in rehabilitation ($\chi^2 = 26.629$, $df = 1$, $p < 0.001$) and species identity ($\chi^2 = 39.174$, $df = 2$, $p < 0.001$) significantly influenced rehabilitation success. All coefficients were positive, indicating positive influences of these variables on rehabilitation success (GLM2; Tables 3 & 5). Larger turtles of every species were more likely to survive than smaller ones. For every

Table 4. Candidate generalized linear models (GLMs) used to assess the influence of species, body size (standardized curved carapace length), sex (male or female) and time in rehabilitation (d) on sea turtle rehabilitation success rates. The dataset contained details of turtles stranded in Florida and taken to rehabilitation between 1986 and 2004 ($n = 374$). Models with a difference in Akaike's information criterion (with correction for finite sample sizes; $\Delta AICc$) greater than 2 were not well supported

GLM	Intercept	Sex	Species	Time (coefficients)	Standardized size (coefficients)	df	AICc	$\Delta AICc$
1 (Global)	-6.983	+	+	0.005281	2.245	6	141.7	2
2	-6.985		+	0.005280	2.244	5	139.7	0
3	-5.135		+		1.890	4	164.2	25
4	-5.160	+	+		1.876	5	166.2	26
5	-3.385			0.003181	1.569	3	174.7	35
6	-3.558	+		0.003145	1.543	4	175.8	36
7	-2.962				1.492	2	190.2	51
8	-3.160	+			1.461	3	190.8	51
9	-4.261		+	0.003905		4	199.2	60
10	-4.411	+	+	0.003848		5	199.9	60
11	-2.847	+		0.002850		3	221.0	81
12	-3.632	+	+			4	221.5	82
13	-3.390		+			3	222.2	83
14	-2.543			0.002924		2	222.4	83
15	-2.589	+				2	236.4	97
16	-2.240					1	239.0	99.29

Table 5. Attributes of sea turtles admitted into rehabilitation centres in Florida between 1986 and 2004 ($n = 374$), including body size and sex ratios of 4 species and the duration that each spent in rehabilitation prior to successful release back into the wild

Species	Body size (cm)	Time (d)	Sex (n)		
	Mean (SD, range)	Mean (SD, range)	Female	Male	Unknown
Green	44.0 (14.12, 23.5–108.1)	72.4 (206.91, 0–1323)	122	62	184
Hawksbill	44.9 (19.11, 24.1–76.6)	15.0 (23.0, 0–60)	6	3	9
Kemps ridley	40.2 (14.79, 16.5–71.9)	54.5 (77.22, 0–294)	14	6	20
Loggerhead	84.7 (16.18, 48.7–119)	84.7 (151.75, 0–1119)	93	77	70

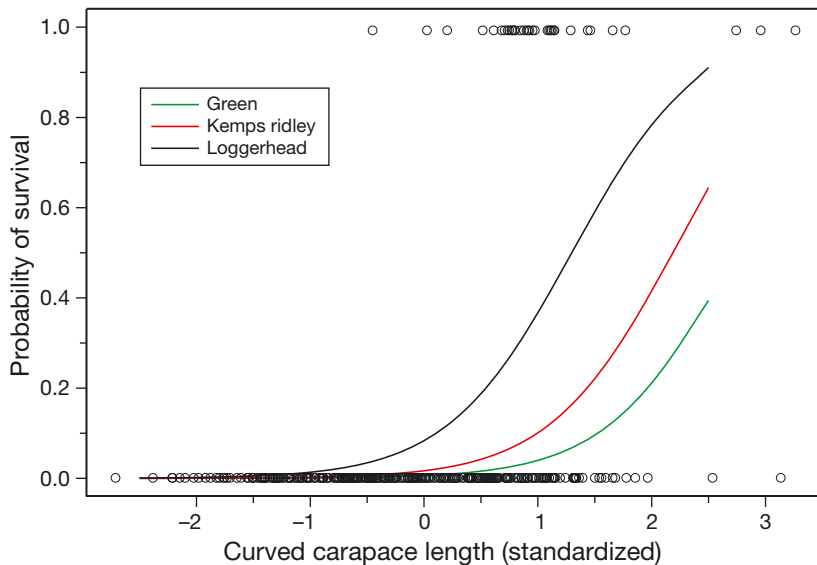


Fig. 2. Size (standardized curved carapace length, CCL) versus probability of survival for sea turtles taken for rehabilitation in Florida between 1986 and 2004 ($n = 374$). A standardized CCL value of 0 represents a turtle of average size (i.e. a Z-score represents the standardized deviation from a mean of zero), negative values indicate smaller turtles, and positive values indicate larger turtles. Solid line: fitted values obtained by the binomial generalized linear model (GLM) for each species; open circles: observed values for all species. As the size of a turtle increases, so does the probability of survival

increase in the CCL equivalent to 1 SD from the mean, the odds of survival increase by 9.4 times (Fig. 2). Additionally, the longer a turtle spent in rehabilitation, the more likely it was to be released (Fig. 3), with the odds of survival increasing by a factor of 1 for each additional day spent in rehabilitation. The significant species effect in our model revealed that loggerhead turtles were more likely than the other 2 species to survive rehabilitation, with green turtles the least likely and Kemp's ridleys intermediate (Figs. 2 & 3).

The power of our model could be improved if the stranding dataset had more complete records, which greatly limited sample sizes in our full analysis. Only 15.9% ($n = 391$) of the 2462 records had complete information (Table 2). Sex was the most common variable missing, known for only 503 (29.6%) turtles with known rehabilitation outcomes (Table 2). Complete details were recorded for only 8% of hawksbill turtles (Table 2), and the low sample sizes for other species reflect their relative live stranding rates (e.g. leatherback and olive ridley turtles were generally found dead rather than alive).

DISCUSSION

Any study on the success of rehabilitation efforts should be placed in context; we have summarized findings from a study spanning all stranded turtles documented in Florida over a period of 2 decades. We found that 63% of sea turtles admitted into rehabilitation facilities were never released back into the wild, and those animals that were released (37%) often required extended periods in rehabilitation—ranging from months to over 3 yr. Most mortality occurred early in the rehabilitation process (within a few weeks), but many animals died even after substantial periods in care (e.g. over 3 yr). We found strong differences among species in terms of rehabilitation success; loggerhead turtles were most likely to survive rehabilitation, followed by

Kemp's ridleys and green turtles, and larger individuals of all species were more likely to survive than smaller individuals. Underlying these patterns, however, is unexplained variance that includes the causes of mortality and severity of injuries, the treatments provided to individual turtles, and the likelihood of sick or injured turtles becoming stranded and found. Therefore, the results of our study do not necessarily apply to other contexts in which different parameters may be known about injured turtles. Low success rates are typical of many rehabilitation programs

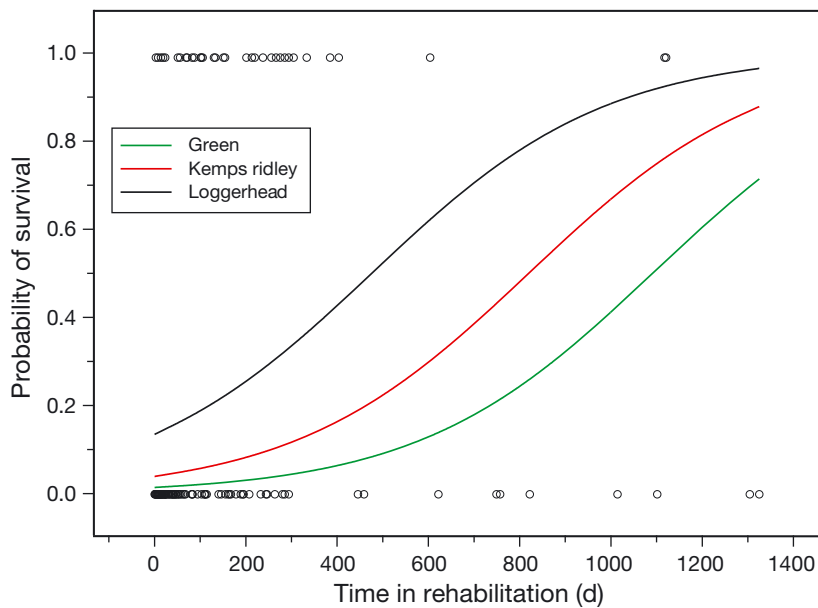


Fig. 3. Days spent in rehabilitation versus probability of survival for sea turtles taken for rehabilitation in Florida between 1986 and 2004 ($n = 374$). Solid line: fitted values obtained by the binomial generalized linear model (GLM) for each species; open circles: observed values for all species. As the number of days a turtle spends in rehabilitation increases, so does the probability of survival

(Tribe & Brown 2000), but our findings indicate that Florida sea turtle rehabilitation success rates are higher than those in Australia (26%; Table 1).

Euthanasia is an option for some stranded turtles whose injuries are severe enough to indicate that rehabilitation may be unsuccessful (Karesh 1995, Tribe & Brown 2000, Moore et al. 2007). For turtles that appear capable of making a full recovery, however, the longer they survive in captivity the more likely they are to be released back into the wild (Fig. 1). This pattern emerges because those individuals that have the most severe injuries die very quickly in the rehabilitation process, and as individuals are successfully nursed through the first several weeks of rehabilitation (when the health complications are most severe) their odds of surviving dramatically increases (Fig. 1). Individuals that require long periods in rehabilitation, however, could present potential risks to wild sea turtle populations. During rehabilitation, animals may be exposed to pathogens to which they do not have immunity (Tribe & Brown 2000, Moore et al. 2007). These individuals may transmit diseases, which have been acquired or modified in rehabilitation, to the wild population upon release (Tribe & Brown 2000, Moore et al. 2007).

Although many individual turtles are successfully released following extended rehabilitation, we know very little about whether these animals ultimately sur-

vive. In general, reptile repatriation projects are not very successful, and thus long-term monitoring of sea turtle survival after release from rehabilitation is important (Dodd & Seigel 1991, Karesh 1995, Tribe & Brown 2000). Such studies are scarce because of the expense associated with monitoring rehabilitated individuals in the open ocean after release (Cardona et al. 2012, Mestre et al. 2014). Satellite tracking of rehabilitated loggerhead turtles has revealed that their movement behavior is more variable than wild turtles; released turtles travel at higher speeds, turn back more often, spend more time on the continental shelf and at the surface during the night compared to healthy turtles (Cardona et al. 2012). Although this suggests that rehabilitated loggerhead turtles can survive for at least several months after release back into the wild, the behavioral anomalies they have exhibited casts uncertainty upon

whether these individuals will survive and reproduce, and thus contribute to the population over the longer term (Cardona et al. 2012). Another study on loggerhead and green turtles suggested that rehabilitation is promising, since turtles migrated towards known foraging areas following release (Mestre et al. 2014).

Understanding the capacity for released turtles to breed and thus contribute directly to population recruitment is also limited (Karesh 1995, Cardona et al. 2012, Mestre et al. 2014). The majority of information about rehabilitated sea turtles has been gleaned from animals that have been incidentally hooked or netted by fishing gear and released immediately after hook removal or untangling from netting aboard the fishing vessel. The survival outcome for these animals may differ from individuals that require long and complicated rehabilitation in captivity for more serious illness or injury (Cardona et al. 2012). Thus, further investigation into post-release survival rates of rehabilitated sea turtles is necessary to better assess rehabilitation success and its effects on behavior (Cardona et al. 2012, Mestre et al. 2014).

The conservation value of animals during rehabilitation, and those that remain in captivity indefinitely due to the serious nature of their injuries may be especially important as a mechanism to educate the public about wildlife conservation (Feck & Hamann 2013). In our study, 1.6% of surviving sea turtles re-

mained in captive facilities such as aquariums and public education centres. Rehabilitation facilities play a major role in providing environmental education and raising public awareness about conservation issues (Tribe & Brown 2000, Moore et al. 2007, Cardona et al. 2012, Feck & Hamann 2013). For example, a live turtle in rehabilitation can facilitate effective outreach programs about habitat conservation (Moore et al. 2007, Feck & Hamann 2013). Allowing people to interact directly with injured animals develops a sense of stewardship for wildlife which may foster community involvement in local habitat protection and conservation (Tribe & Brown 2000, Feck & Hamann 2013). Additionally, the release of rehabilitated turtles can have important public educational benefits (Tribe & Brown 2000, Cardona et al. 2012, Mestre et al. 2014) because such opportunities are often advertised widely as media events to raise awareness of the threats facing wildlife. Although this may not contribute to conservation directly (in terms of population growth), continuing to rehabilitate these animals in facilities that are open to the public likely contributes to conservation in other ways, by facilitating a widespread understanding of the causes and nature of wildlife injuries. The public can also use this knowledge to place political pressure on decision-makers in a context where conservation measures are known, feasible and available, but not implemented because of lack of will by those responsible.

Our results provide decision-makers with a greater understanding of the relatively low success rates of sea turtle rehabilitation and the phenotypic attributes that influence rehabilitation success, enabling prioritization of animals when the number of turtles exceeds resource availability. When resources are limited, we recommend focusing efforts on larger adult turtles, which are more likely to survive rehabilitation. When possible, priority care should be provided to species that are easier to successfully rehabilitate (e.g. loggerhead turtles in Florida) or rare species for the area. Key future studies should include more thorough collection of data on stranded and rehabilitated animals and post-release monitoring of released individuals to determine survival rates and reproductive potential. This information can then be used to model the potential conservation outcomes of rehabilitation efforts on population dynamics. Overall, decision-makers should continue to promote legislative protection efforts that seek to reduce strandings, provide funding support for facilities that rehabilitate threatened animals, and provide funding for research that investigates the causes and consequences of strandings.

Acknowledgements. We are grateful to the Florida Marine Research Institute and Florida Sea Turtle Stranding and Salvage Network for making data accessible. We thank A. Foley, director of STSSN, for permission to use the dataset for our research, and R. Jones and S. Blomberg for statistical advice.

LITERATURE CITED

- Agresti A, Coull BA (1998) Approximate is better than 'exact' for interval estimation of binomial proportions. *Am Stat* 52:119–126
- Allen LK (2000) Protected species and New England fisheries: an overview of the problem and conservation strategies. *Northeast Nat* 7:411–418
- Bagarinao TU (2011) The sea turtles captured by coastal fisheries in the northeastern Sulu Sea, Philippines: documentation, care and release. *Herp Conserv Biol* 6: 353–363
- Barto K (2012) MuMIn multi-model inference package, version 1.8.4. <https://cran.r-project.org/web/packages/MuMIn/index.html>
- Biddle TM, Limpus CJ (2011) Marine wildlife stranding and mortality database annual reports 2005-2010. Marine turtles. Conservation and technical data report, Department of Environment and Resource Management, Brisbane
- Burnham KP, Anderson DR (1998) Model selection and inference: a practical information-theoretic approach. Springer-Verlag, New York, NY
- Cardona L, Fernández G, Revelles M, Aguilar A (2012) Readaptation to the wild of rehabilitated loggerhead sea turtles (*Caretta caretta*) assessed by satellite telemetry. *Aquat Conserv* 22:104–112
- Casal AB, Orós J (2009) Plasma biochemistry and haematology values in juvenile loggerhead sea turtles undergoing rehabilitation. *Vet Rec* 164:663–665
- Dodd CK, Seigel RA (1991) Relocation, repatriation, and translocation of amphibians and reptiles: Are they conservation strategies that work? *Herpetologica* 47: 336–350
- Dutton PH, Squires D (2008) Reconciling biodiversity with fishing: a holistic strategy for Pacific sea turtle recovery. *Ocean Dev Int Law* 39:200–222
- Feck AD, Hamann M (2013) Effect of sea turtle rehabilitation centres in Queensland, Australia, on people's perceptions of conservation. *Endang Species Res* 20: 153–165
- Ferraro PJ, Pattanayak SK (2006) Money for nothing? A call for empirical evaluation of biodiversity conservation investments. *PLoS Biol* 4:e105
- Foley AM, Schroeder BA, Redlow AE, Fick-Child KJ, Teas WG (2005) Fibropapillomatosis in stranded green turtles (*Chelonia mydas*) from the eastern United States (1980–98): trends and associations with environmental factors. *J Wildl Dis* 41:29–41
- Goldberg DW, Wanderlinde J, Freire IMA, da Silva LCP, Almosny NRP (2011) Serum biochemistry profile determination for wild loggerhead sea turtles nesting in Campos dos Goytacazes, Rio de Janeiro, Brazil. *Ciênc Rur* 41:143–148
- Greenland JA, Limpus CJ (2006) Marine wildlife stranding and mortality database annual report 2004. III. Marine turtles. Conservation technical and data report, Environ-

- mental Protection Agency, Brisbane
- Greenland JA, Limpus CJ (2008) Marine wildlife stranding and mortality database annual report 2003. III. Marine turtles. Conservation technical and data report, Environmental Protection Agency, Brisbane
- Greenland JA, Limpus CJ, Currie KJ (2004) Queensland marine wildlife stranding and mortality database annual report 2001-2002. III. Marine turtles. Conservation technical and data report, Environmental Protection Agency, Brisbane
- Haines JA, Limpus CJ (2001) Marine wildlife stranding and mortality database annual report, 2000. III. Marine turtles. Conservation technical and data report, Queensland Parks and Wildlife Service, Brisbane
- Haines JA, Limpus CJ, Flakus S (2000) Marine wildlife stranding and mortality database annual report, 1999. III. Marine turtles. Conservation technical and data report, Queensland Parks and Wildlife Service, Brisbane
- IUCN (International Union for Conservation of Nature) (1995) A global strategy for the conservation of marine turtles. IUCN Species Survival Commission Marine Turtle Specialist Group, Cambridge
- Karesh WB (1995) Wildlife rehabilitation: additional considerations for developing countries. *J Zoo Wildl Med* 26:2–9
- Mestre F, Braganca MP, Nunes A, dos Santos ME (2014) Satellite tracking of sea turtles released after prolonged captivity periods. *Mar Biol Res* 10:996–1006
- Moore M, Early G, Touhey K, Barco S, Gulland F, Wells R (2007) Rehabilitation and release of marine mammals in the United States: risks and benefits. *Mar Mamm Sci* 23: 731–750
- R Development Core Team (2012) R: a language and environment for statistical computing. R Foundation for Statistical Computing, Vienna
- Shaver DJ, Teas WG (1999) Stranding and salvage networks. In: Eckert KL, Bjorndal KA, Abreu-Grobois FA, Donnelly M (eds) Research and management techniques for the conservation of sea turtles. Publ. No. 4, IUCN/SSC Marine Turtle Specialist Group, Washington, DC, p 152–155
- Teas WG (1993) Species composition and size class distribution of marine turtle strandings on the Gulf of Mexico and southeast United States coasts, 1985-1991. NOAA Tech Memo NMFS-SEFSC-409, Miami, FL
- Tribe A, Brown PR (2000) The role of wildlife rescue groups in the care and rehabilitation of Australian fauna. *Hum Dimens Wildl* 5:69–85
- Wallace BP, DiMatteo AD, Bolten AB, Chaloupka MY and others (2011) Global conservation priorities for marine turtles. *PLoS ONE* 6:e24510
- Wimberger K, Downs CT, Boyes RS (2010) A survey of wildlife rehabilitation in South Africa: Is there a need for improved management? *Anim Welf* 19:481–499

*Editorial responsibility: Paolo Casale,
Rome, Italy*

*Submitted: August 18, 2014; Accepted: August 15, 2015
Proofs received from author(s): October 12, 2015*