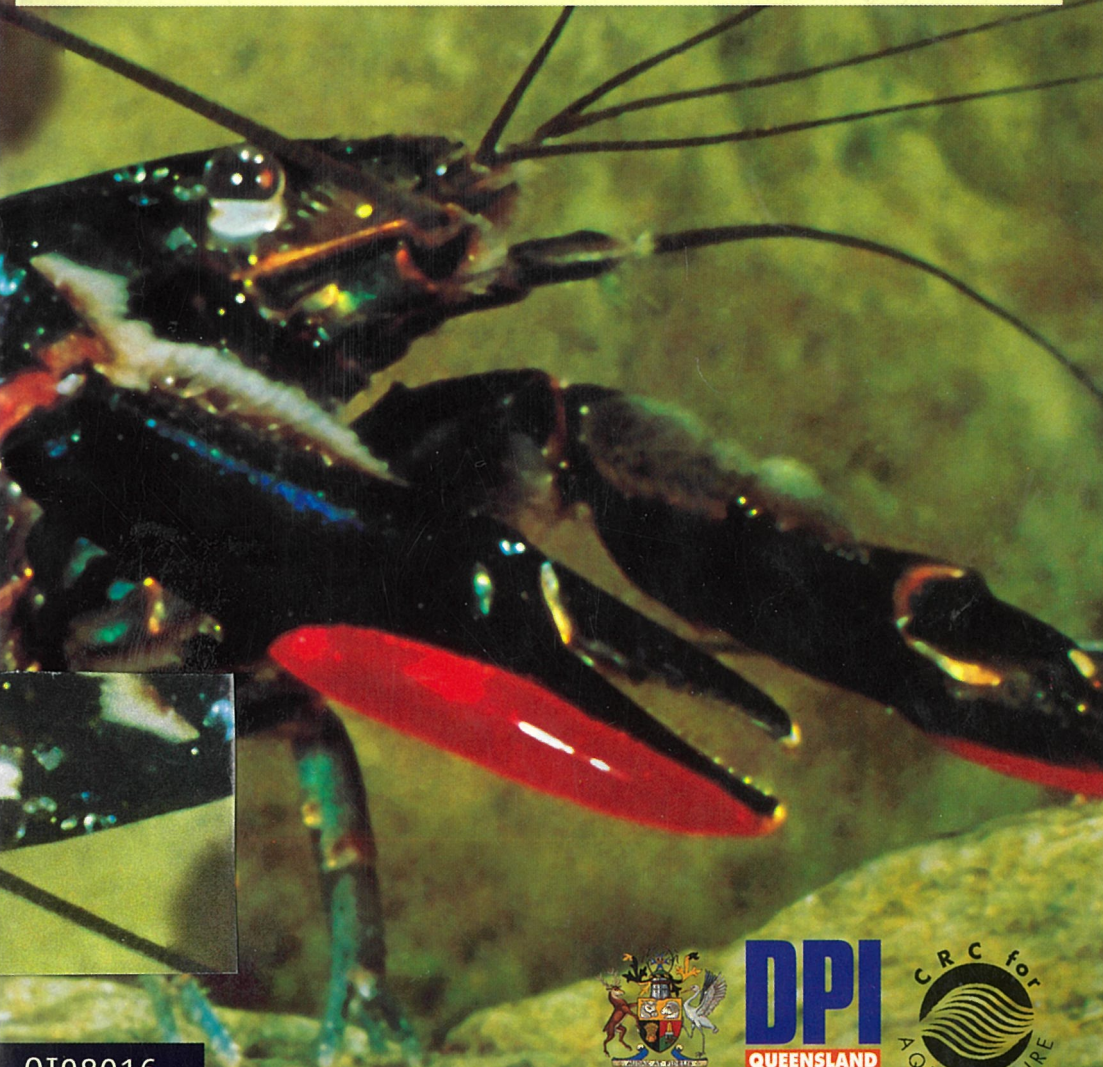


# BREEDING REDCLAW

## Management and selection of broodstock

Clive M. Jones, Cam P. McPhee and Ian M. Ruscoe



QI98016



QUEENSLAND  
GOVERNMENT



# **Breeding redclaw: management and selection of broodstock**

Clive M. Jones<sup>1</sup>, Cam P. McPhee<sup>2</sup> and Ian M. Ruscoe<sup>1</sup>

<sup>1</sup>Freshwater Fisheries and Aquaculture Centre, Department of Primary Industries, Walkamin, Queensland 4872, Australia

<sup>2</sup>Animal Research Institute, Department of Primary Industries, Yeerongpilly, Queensland 4105, Australia

Department of Primary Industries  
Queensland

ISSN 0727-6273  
Agdex 486/33

First published in 1998

National Library of Australia Cataloguing-in-Publication data:

Jones, Clive, 1959- .

Breeding redclaw : management and selection of broodstock.

ISBN 0 7242 6783 2.

1. Crayfish - Breeding. 2. Crayfish culture. I. McPhee,  
Cam P., 1938- . II. Ruscoe, I. M. III. Queensland. Dept.  
of Primary Industries. IV. Title. (Series : Information  
series (Queensland. Dept. of Primary Industries) ; Q198016).

639.64

Editing, design and production managed by  
Publication Production, Department of Primary Industries

Cover design: Peter Evans, Ads-Up Graphics

The Department of Primary Industries and the Aquaculture Cooperative Research Centre Ltd have taken all reasonable steps to ensure that the information contained in this publication is accurate at the time of publication. Readers should ensure that they make appropriate enquiries to determine whether new information is available on the particular subject matter. Information contained in this publication is provided as general advice only. For application to specific circumstances, professional advice should be sought.

© The State of Queensland, Department of Primary Industries and the Aquaculture Cooperative Research Centre Ltd 1998

Copyright protects this publication. Except for purposes permitted by the Copyright Act, reproduction by whatever means is prohibited without the prior written permission of the publisher. Inquiries should be addressed to:

Manager, DPI Publications  
Department of Primary Industries  
GPO Box 46  
Brisbane Qld 4001



# Contents

---

## Part 1: Breeding Redclaw 1

Introduction 1

Redclaw aquaculture: a growing industry 1

Selective breeding: background and principles 3

Simple quantitative genetics 3

Breeding choices for the long term 5

Starting a selective breeding program 7

Age assessment of stock 7

Intensive stock management 7

Other influences on broodstock 10

Choosing the best stock 11

Measuring the results 12

The selection process 12

Selecting the broodstock 12

Setting up mating 14

Tank breeding 14

Pond breeding 16

Suitable traits 18

The genetic base 18

Inbreeding 19

Record keeping 20

Adult redclaw 20

Juveniles 21

## Part 2: Redclaw Research Findings 22

Introduction 22

Basis of the research program 22

Results of the program 24

Potential of selective breeding programs 26

References & Further Reading 28

Contacts & Services 30

## Figures

- 1 There are more than 200 licensed redclaw farms in Queensland. They typically have between 1 and 4 ha of ponds. 2
- 2 Redclaw display significant variability in growth rate. A part of the faster growth rate can be attributed to genetic superiority. 4
- 3 Theoretical changes in mean growth rate of redclaw over successive generations on the basis of no selection, selection for high growth rate and selection for low growth rate. 5
- 4 Redclaw will readily breed in captivity. 6
- 5 Flowchart of processes for the managed aquaculture of redclaw involving selective breeding. 8
- 6 Typical size distribution of redclaw grown for 6 months from stocking with advanced juveniles. 11
- 7 Redclaw can be held successfully in tank systems providing the correct conditions are supplied. 14
- 8 Cages used to isolate selected and control juveniles at the Freshwater Fisheries and Aquaculture Centre, Walkamin. 25
- 9 The result of a 9.5 % simulated increase in weight applied to each crayfish from an actual harvest. 26

## Tables

- 1 Recommended conditions for tank mating of redclaw 15
- 2 Recommended conditions for pond breeding of redclaw 16
- 3 Comparison of weight of redclaw on the basis of river stock, selection line and sex, after two generations of selective breeding 24