

# Experimental challenge and clinical cases of Bohle iridovirus (BIV) in native Australian anurans

B. R. Cullen\*, L. Owens

Microbiology and Immunology, James Cook University, Townsville, Queensland 4811, Australia

**ABSTRACT:** Ranaviruses have been observed with increasing frequency amongst poikilothermic vertebrate hosts. The impact of ranaviruses upon amphibian populations has remained largely unknown. A gene probe for Bohle iridovirus (BIV) based upon primers designed to detect epizootic haematopoietic necrosis virus (EHNV) was constructed. A PCR and dot-blot system was used successfully in screening for the presence of BIV nucleic acid in digested formalin-fixed, paraffin-embedded amphibian tissues. Juvenile frogs were more susceptible to BIV than adults. In experimental challenges and epizootics in captive frogs, juvenile *Litoria caerulea*, *L. alboguttata*, *Cyclorana brevipes* and *Pseudophryne coriacea* were acutely susceptible. High mortality (at or near 100%) resulted, usually occurring within 5 to 25 d depending on dose and method of exposure. Histopathological changes included mainly hepatic, renal and splenic necroses. Significant haemosiderosis was encountered in more chronically infected frogs. BIV could be reisolated from juvenile *L. caerulea* >40 d after inoculation, and >200 d after the first mortalities occurred in an epizootic in *L. alboguttata*. Adult *L. rubella*, *L. inermis*, *L. caerulea*, *Cophixalus ornatus* and *Taudactylus acutirostris* were less susceptible in trials ranging from 30 to >100 d. There was some evidence of chronic infection, and BIV could be detected by PCR. Wild moribund adult *L. caerulea* from Townsville and captive juvenile *Pseudophryne coriacea* from Sydney undergoing mortality tested positive with the BIV PCR. PCR and dot blot was more sensitive than viral isolation. PCR could detect BIV in amphibians long after BIV challenge, and in amphibians which appeared healthy. Ranaviruses could be having an impact on Australian herpetofauna.

**KEY WORDS:** Ranavirus · Iridovirus · Amphibian mortality · Decline · Amphibian disease

Resale or republication not permitted without written consent of the publisher

## INTRODUCTION

Bohle iridovirus (BIV) was isolated from metamorphs of the ornate burrowing frog *Limnodynastes ornatus* collected at a temporary pond near Townsville, Australia. It was associated with mortalities in these captive amphibians during or soon after metamorphosis (Speare & Smith 1992).

Frog virus 3 (FV3) is the type species for the genus *Ranavirus* within the family Iridoviridae. FV3 was isolated in 1965 from renal adenocarcinoma of the leopard frog *Rana pipiens*, but was later found to have no causal relationship to the tumour (Granoff 1989). Simi-

lar amphibian ranaviruses have been isolated from normal and diseased adult leopard frogs, normal adult and larval newts *Triturus viridescens* and diseased bullfrogs *R. catesbeiana* in North America (Clark et al. 1968, 1969, Essani & Granoff 1989b). These viruses are very similar or identical, and are generally considered to be strains of the same *Ranavirus* type (Willis et al. 1985). Iridoviruses have been found more recently in the common frog *R. temporaria* in the United Kingdom (Drury et al. 1995, Cunningham et al. 1996), the cane toad *Bufo marinus*, and *Leptodactylus* spp. in Venezuela (Zupanovic et al. 1998), and tiger frogs *R. tigrina* in Thailand (Kanchanakhon 1998).

BIV is most probably a member of the *Ranavirus* genus. Closely related *Ranavirus* isolates have been found around the world from a variety of poikilother-

\*E-mail: bradford.cullen@jcu.edu.au

mic hosts. Protein and restriction-enzyme digest patterns of the following vertebrate iridoviruses were similar, indicating that they are more closely related to the *Ranavirus* genus than to any other genera of the Iridoviridae: FV3, epizootic haematopoietic necrosis virus (EHNV), BIV, and iridoviruses of sheatfish *Silurus glanis*, catfish *Ictalurus melas*, doctor fish *Labroides dimidiatus*, guppy *Poecilia reticulata*, box turtle *Terrapene carolina*, tortoise *Agrionemys horsfieldi*, tadpole *Rana aurora* and *R. esculenta* (Willis et al. 1977, Elliot & Kelly 1980, Flugel et al. 1982, Essani & Granoff 1989a,b, Eaton et al. 1991, Hedrick et al. 1992, Ahne 1994, Ahne et al. 1995, 1997, Cullen et al. 1995, Mao et al. 1997, Tapiovaara et al. 1998).

Ranaviruses in Australia and elsewhere could be impacting upon amphibian populations. The experimental determination of susceptible host species and pathology of BIV is important in the elucidation of potential hosts in the wild. Identification of disease pathology assists in the diagnosis of BIV in wild animals. Information concerning host-specificity and susceptibility aids in extrapolating possible impacts the virus may have on wild populations, as well as transmission and transportation potentialities.

Australian ranaviruses appear to be host non-specific, and may have a large host range among vertebrate poikilotherms. Experimentally, EHNV was able to infect a number of fish species, with some succumbing to an acute disease and others appearing relatively refractory (Langdon 1989). BIV has been found to cause disease in a number of amphibian (Speare & Smith 1992, Cullen et al. 1995), piscine (Moody & Owens 1994, Ariel & Owens 1997) and reptilian (Ariel 1997) hosts.

Further experimental testing of BIV was desirable to extend the current knowledge on the range of potential amphibian hosts, disease dynamics, pathology and possible impacts on wild amphibian populations. Various wild-caught native frog species of different life history stages were subjected to BIV challenge. Histopathological, viral isolation and PCR techniques were utilised in the investigation. Some diseased native frogs caught from the wild were also examined to determine whether BIV was associated with the diseased state.

## MATERIALS AND METHODS

**Frogs.** *Litoria caerulea* tadpoles were collected from a residential property at Cardwell, Queensland. Wild frogs had spawned in an unused aquarium at the residence in January 1995. Tadpoles were raised to metamorphosis, and the postmetamorphic juveniles were used in the viral challenge. *L. alboguttata* tadpoles

were collected from a roadside ditch at Jensen, Townsville, Queensland in March 1994. Two juvenile *Cyclorana brevipes* were collected from Taylor's Beach, Queensland, and brought to the laboratory in March 1994. Adult *L. caerulea* were collected from suburban residences in Townsville, August 1993. Adult *L. rubella* were collected from Oonoonba, Townsville, Queensland in July 1995. Adult *L. inermis* were collected from the Gem Fields and Amber Station, Mount Surprise, Queensland in August 1995. Adult *Cophixalus ornatus* were collected from Atherton, Queensland in September 1993. Adult *Taudactylus acutirostris* were collected from Big Tableland, Queensland in September 1993.

*Litoria caerulea* tadpoles were raised at a pathogen-free facility in polystyrene boxes with gauze lids, *L. alboguttata* tadpoles were maintained in glass aquariums. Water was aerated, and tadpoles were fed boiled lettuce and a commercial flake fish food.

Post-metamorphic anurans were housed in a similar manner before and during viral challenge. Frogs were housed in clear plastic containers 21 × 21 × 8 cm (height) with gauze lids. They were fed live adult *Drosophila* sp., a dish of distilled water was provided, and some dried bark and leaves were added as hides. The large *Litoria caerulea* adults were initially housed in a plastic container 64 × 39 × 39 cm (height) with a screen lid and were fed a variety of live insects. Throughout the infection trial, the adult *L. caerulea* were housed in glass tanks 50 × 22 × 22 cm (height). Room temperature during housing of the frogs and experimental challenge ranged from 21 to 29°C.

**BIV experimental challenge.** The BIV challenge experiments were undertaken over a number of years as the various frogs were collected and raised. In the bath challenge treatments, BIV was added to a dish containing distilled water at the specified dose (Table 1), and this was placed into the frog housing container. For the injection challenge, BIV was injected intraperitoneally at the specified dose (Table 1) using a 27 gauge needle on a 1 ml syringe. For the adult *Litoria caerulea*, an inoculum of 500 µl was used, for other frogs a 100 µl inoculum was used. For contact challenge, uninoculated frogs were placed into the same housing container as the injected frogs. Control individuals were uninoculated, and housed separately but in the same manner as inoculated frogs.

**Clinical cases.** *Litoria alboguttata* tadpoles and juveniles, and *Cyclorana brevipes* juveniles were not intentionally challenged with BIV, but started undergoing mortality whilst being housed in the Aquatic Pathobiology experimental facility. An adult *L. caerulea* (snout-urostyle length 117 mm) was collected from a residence in Cranbrook, Townsville, Queensland, in September 1995. It was emaciated and sluggish. It was

Table 1. Regime for experimental challenges of native Australian amphibians with Bohle iridovirus (BIV)

Species	Challenge treatment	N	Dose (TCID <sub>50</sub> ml <sup>-1</sup> )	Frog length (mm)
<i>Litoria caerulea</i> Juveniles	Bath	18	10 <sup>3</sup>	13–19
	Injection low dose	18	10 <sup>3</sup>	
	Injection high dose	20	10 <sup>4.5</sup>	
	Control	10	Nil	
<i>Litoria caerulea</i> Adults	Bath	4	10 <sup>3</sup>	77–109
	Injection	4	10 <sup>3</sup>	
	Incontact	4	Nil	
	Control	3	Nil	
<i>Litoria rubella</i> Adults	Injection	2	10 <sup>4.5</sup>	22–28
	Control	1	Nil	
<i>Cophixalus ornatus</i> Adults	Bath	3	10 <sup>3</sup>	15–21
	Injection	3	10 <sup>3</sup>	
	Incontact	2	Nil	
	Control	2	Nil	
<i>Taudactylus acutirostris</i> Adults	Bath	3	10 <sup>3</sup>	18–20
	Injection	3	10 <sup>3</sup>	
	Control	2	Nil	

sacrificed using chloroform and processed for virological examination. *Pseudophryne coriacea* tadpoles were collected from northern New South Wales in February 1994, and were housed at a Sydney residence. Juveniles started suffering mortality 8 mo later. Six whole frozen frogs were sent to James Cook University, where they were processed for virological examination. Snout-urostyle length ranged from 19 to 25 mm.

**Post-mortem evaluations.** *Litoria caerulea* juveniles, *L. rubella* adults, *L. inermis* adults and *L. alboguttata* tadpoles and juveniles were observed regularly for signs of morbidity or mortality. Upon death, frogs were sectioned longitudinally. Half the frog was prepared for viral isolation, the other half for histopathology. At the end of the experiment, remaining live frogs were sacrificed using chloroform and processed in the same manner. If the frog carcass was in a decomposed state and not fit for histology, the whole frog was frozen for viral isolation.

One adult *Litoria caerulea* from each of the inject, incontact and bath treatments was killed with chloroform every 5 d commencing on the tenth day post-challenge; 1 control frog was killed every 5 d commencing 15 d post-challenge. Frogs were dissected, organs were removed and processed for viral isolation and histopathology. The moribund adult *L. caerulea* was treated similarly, but in addition a blood smear was made and stained with Giemsa.

Smaller frogs were halved longitudinally, with one half prepared for viral isolation and the other for histopathology. Unless mortality occurred, 1 adult *Cophixalus ornatus* was killed with chloroform 15, 20

and 25 d post-challenge in the injection and bath challenge treatments. In the incontact and control treatments, 1 frog was sacrificed 20 and 25 d post-challenge. Unless mortality occurred, 1 adult *Taudactylus acutirostris* from the injection and bath challenge treatments was sacrificed 15, 20 and 25 d post-challenge, and controls 20 and 25 d post-challenge. The frozen *Pseudophryne coriacea* juveniles were processed for histopathology and viral isolation, the juvenile *Cyclorana brevipes* carcasses were processed for viral isolation only.

Mortality data for amphibians experimentally challenged with BIV in this paper, in Cullen (2000) & Cullen et al. (1995) was collated to obtain a comparison of mortality with the life history stage of the host. An odds ratio was calculated to determine the excess risk juveniles have of dying due to BIV exposure compared to adults. The following BIV-exposed frogs were included in the calculation: Adults—*Bufo marinus* (30 frogs), *Litoria rubella* (2 frogs), *L. inermis* (2 frogs), *L. caerulea* (8 frogs), *Cophixalus ornatus* (6 frogs), *Taudactylus acutirostris* (6 frogs); juveniles—*Bufo marinus* (4 frogs), *L. caerulea* (56 frogs), *L. latipalmata* (2 frogs), *Limnodynastes terraereginae* (16 frogs).

**Viral isolation.** Tissue samples collected for isolation of BIV were placed into individual plastic storage bags and stored at –20°C until processing. After thawing, samples were chopped and placed into a 1.5 ml Eppendorf tube containing 600 µl of Dulbecco's modified Eagle's Medium (DMEM). Samples were either ultrasonicated for 1 min at 8 µm distance whilst on ice, or three 0.5 mm diameter glass beads were added to the tube which was then vortexed for 2 min at 4°C. Cellular debris was then pelleted by centrifugation at 7000 × *g* for 3 min, in preparation for introduction to cell culture. BF-2 cells were cultured in each well of a 24-well tissue culture plate, with each well containing 900 µl of DMEM with 5% foetal bovine serum (FBS); 100 µl of clarified sample was added to each well. The plate was incubated at 25°C in a humid, airtight, CO<sub>2</sub>-rich container, and checked daily for the onset of cytopathic effect (CPE). Samples were left for 2 passages of 14 d each before being declared negative.

**Histological preparation.** Tissues for histological examination were fixed in either 10% neutrally buffered formalin or Bouin's fixative for at least 48 h, washed in 70% ethanol, embedded in paraffin and sectioned at a thickness of 5 µm. Tissues were stained in Mayer's haematoxylin and eosin (H&E) and Perri's Prussian blue stain, and observed under light microscopy.

**PCR and dot blot hybridisation.** Paraffin embedded sections from *Litoria rubella*, *L. inermis*, the adult *L. caerulea* from Cranbrook and *Pseudophryne coriacea* were cut at a thickness of 5  $\mu\text{m}$  and 4 to 5 of these were placed into a clean, autoclaved 1.5 ml Eppendorf tube. Between each block, the cutting blade was removed, dipped in xylene and flamed thoroughly, as were the handling forceps. To each tube we added 500  $\mu\text{l}$  of digestion buffer (10 mM Tris (pH 7.4), 100 mM NaCl, 25 mM disodium EDTA, 0.5% sodium dodecyl sulphate [SDS]) with 200  $\mu\text{g ml}^{-1}$  final concentration of proteinase K. Tubes were incubated overnight at 37°C on a mixer. Nucleic acid was extracted in an equal volume of phenol:chloroform:isoamyl alcohol (25:24:1), and then with an equal volume of chloroform. Nucleic acid was precipitated from the aqueous phase by the addition of  $\frac{1}{4}$  volume of 8 M ammonium acetate and an equal volume of isopropanol. This was incubated over 2 nights at -20°C. The precipitate was concentrated by centrifugation at 7000  $\times g$  for 30 min at 4°C; 500  $\mu\text{l}$  of cold 70% ethanol was added, then tubes were centrifuged again at 7000  $\times g$  for 30 min at 4°C. The DNA pellet was resuspended in 10 to 15  $\mu\text{l}$  of sterile distilled water ( $\text{dH}_2\text{O}$ ) and stored at -20°C.

**PCR.** We extracted 1  $\mu\text{l}$  of sample DNA from the paraffin tissues to use as a template for the PCR. Primers designed from a section of the EHNIV genome by Gould et al. (1995) were used to amplify BIV: 5'-GATCCACACGGCCTGACACCG-3', 5'-GATCCGA-AAGACAGCAGCGGTCTGA-3'. These primers produced a product of 218 bp when used with a BIV template (authors' unpubl. data). The following PCR protocol was used: 10 pmol per 25  $\mu\text{l}$  reaction tube of primers, 1.5 mM  $\text{MgCl}_2$ , 200  $\mu\text{M}$  dNTP, 2.5 U Taq polymerase. PCR program: 95°C  $\times$  1 min, 35  $\times$  (95°C  $\times$  1 min, 62°C  $\times$  1 min, 72°C  $\times$  1 min), 72°C  $\times$  5 min. Probes were constructed by labelling the PCR product with digoxigenin (Boehringer Mannheim, Australia), for use in dot-blot hybridisation.

**Dot blot with digoxigenin-labelled probes.** We dotted 2  $\mu\text{l}$  of heat-denatured PCR product onto a positively charged nylon membrane. Hybridisation and detection protocols for digoxigenin-labelled probes were based on the manufacturer's specifications (Boehringer Mannheim, Australia). The nylon membrane was placed in a roller tube, prehybridisation buffer (5  $\times$  SSC [750 mM NaCl, 75 mM sodium citrate, adjust to pH 7.00], 1.0% [w/v] blocking reagent [Boehringer Mannheim], 0.1% N-laurolysarcosine, 0.02% SDS) was added and incubated for 1.5 h at 68°C. Prehybridisation buffer was discarded; hybridisation buffer (labelled probe diluted in prehybridisation buffer) containing 10 ng  $\text{ml}^{-1}$  of probe was

added and incubated overnight at 68°C. The probe was denatured prior to this by boiling for 10 min. The membrane was washed for 2  $\times$  5 min in 2  $\times$  wash solution (2  $\times$  SSC [300 mM NaCl, 30 mM sodium citrate, adjust pH 7.00], 0.1% SDS), and 2  $\times$  15 min in 0.1  $\times$  wash solution (0.1  $\times$  SSC [15 mM NaCl, 1.5 mM sodium citrate, adjust pH 7.00], 0.1% SDS) to remove unbound probe. All washes were performed in the roller tube at 68°C.

The membrane was equilibrated in maleic acid buffer (150 mM NaCl, 100 mM maleic acid adjust to pH 7.5) for 1 min, then incubated in blocking buffer (1% blocking reagent in maleic acid buffer) on a shaker for 30 min. The membrane was then incubated on a shaker for 30 min in anti-digoxigenin conjugated to alkaline phosphatase diluted 1:5000 in blocking buffer. The membrane was washed 2  $\times$  15 min in maleic acid buffer on a shaker to remove unbound antibodies, and the substrate was then added. The membrane was equilibrated in developing buffer (100 mM Tris-HCl, pH 9.5, 100 mM NaCl, 50 mM  $\text{MgCl}_2$ ) for 2 min. Colour was developed by incubation in the dark in a solution consisting of 34  $\mu\text{l}$  of 100 mg  $\text{ml}^{-1}$  nitroblue tetrazolium (NBT) salt in dimethylformamide, and 35  $\mu\text{l}$  of 50 mg  $\text{ml}^{-1}$  5-bromo-4-chloro-3-indolyl phosphate (BCIP) toluidinium salt in dimethylformamide added to 10 ml of developing buffer at 37°C.

## RESULTS

### *Litoria caerulea* juveniles

Cumulative mortalities for each of the viral challenge treatment groups are displayed in Fig. 1. High mortalities (20 frogs) occurred in the high-dose injection group within 11 d post-inoculation. Mortality

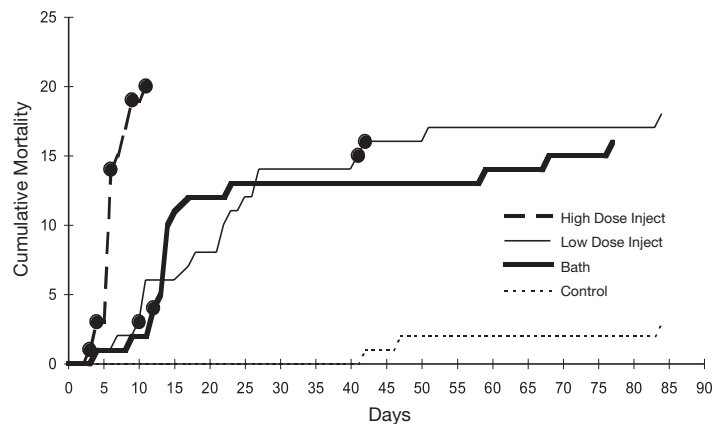


Fig. 1. *Litoria caerulea*. Cumulative mortality of juveniles challenged with Bohle iridovirus (BIV). ●: positive viral isolation

patterns in the low-dose injection (18 frogs) and bath inoculation (16 frogs) groups were slower, and occurred predominantly within the first 25 d; 3 uninoculated control frogs died after Day 42 of the experiment. Some moribund frogs displayed a lack of response to stimuli, and failed to right themselves when overturned. Typically, the juveniles died with very few, if any, external signs. The experiment concluded 84 d post-challenge, at which time remaining frogs were sacrificed.

In the high-dose injection challenge, BIV was reisolated from frogs which died at 3, 4, 6, 9 and 11 d post-challenge (Fig. 1). BIV was reisolated from frogs which died 10, 41 and 42 d post-challenge in the low dose injection group, and from 1 frog which died 12 d post-challenge in the bath inoculation group.

Individuals in the BIV high-dose injection, low-dose injection and bath challenge treatments displayed classic BIV histopathology. Interstitial haematopoietic tissue in the kidney displayed focal areas of necrosis and nuclear pyknosis ranging from mild to extensive. Focal necrosis, margination of nuclear chromatin and pyknosis of nuclei of renal tubule cells was common. Glomeruli were sometimes shrunken and necrotic. Melanin was sometimes associated with necrotic lesions in haematopoietic tissue, tubules and glomeruli (Fig. 2). In the liver, lesions consisting of focal areas of hepatic cellular necrosis, margination of nuclear chro-

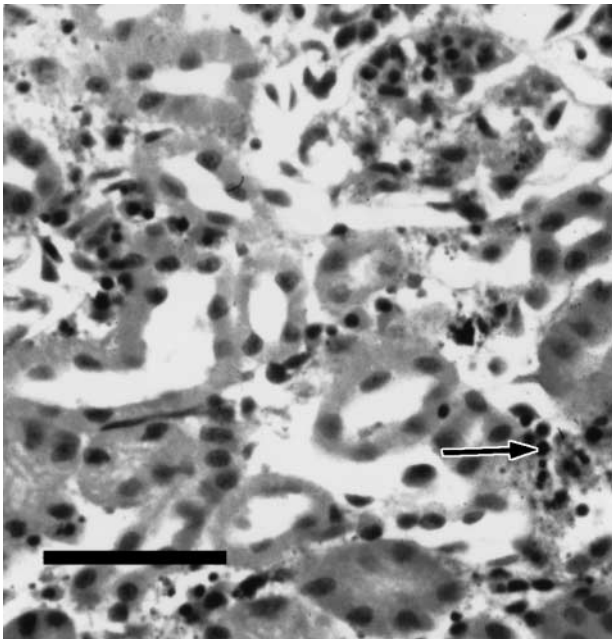


Fig. 2. *Litoria caerulea*. Kidney from a juvenile inoculated with Bohle iridovirus (BIV). Necroses of interstitial haematopoietic tissue and glomeruli are evident, arrow indicates pyknotic nucleus. H&E stain. (Scale bar = 39  $\mu$ m)

matin and pyknosis of nuclei were common. Some areas of severe focal liquefying necrosis were noted. Lesions were sometimes associated with blood vessels. Lesions ranged from very small to extensive areas of cell destruction. Haemorrhages and melanin were often associated with the lesions. Hemosiderin deposition was also observed in some cases. Focal cellular necroses of splenic pulp with diffuse melanisation were observed. Lesions consisting of focal areas of cellular necrosis and pyknosis of nuclei were observed in pancreatic tissue (Fig. 3). Occasional very small areas of focal necrosis with associated melanisation were observed in the heart. Minor lung damage consisting of small focal areas of necrosis and melanisation within alveolar walls was occasionally observed. Focal areas of necrosis within the gastrointestinal mucosa were occasionally observed.

#### *Litoria caerulea* adults

No mortality occurred in any of the challenge or control treatments. BIV could not be isolated from any organs of any frog. No pathological changes could be observed in any organs upon histological examination.

#### *Litoria rubella* adults

None of the frogs displayed external disease signs or underwent mortality during the experiment. All the frogs were sacrificed 105 d post-challenge. All frogs were negative for BIV isolation, and no significant histopathological changes were observed in any of the frogs. One of the BIV-challenged frogs tested positive for the PCR and dot blot, while the other BIV-challenged frog and the unchallenged control frogs were negative.

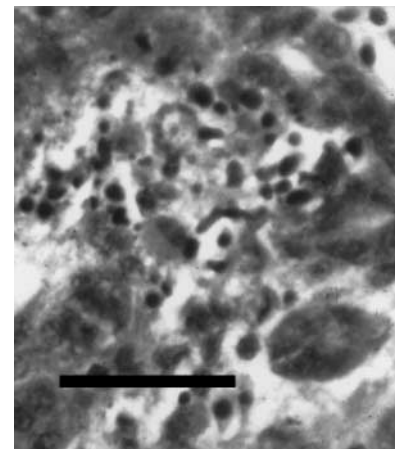


Fig. 3. *Litoria caerulea*. Pancreas from a juvenile inoculated with Bohle iridovirus (BIV). An area of focal necrosis is evident. H&E stain. (Scale bar = 31  $\mu$ m)

### *Litoria inermis* adults

One of the BIV injection challenge frogs died 77 d post-challenge with no external signs. The control frog and the remaining BIV-injection challenge frog were sacrificed 92 d post-challenge, and showed no external signs of disease. All frogs were negative for BIV isolation. No significant histopathological findings were noted. Some post-mortem deterioration occurred in the BIV-injection challenge frog which died, so the histopathology was somewhat compromised. The 2 BIV-challenged frogs were both positive for the PCR and dot-blot test, while the unchallenged control frog was negative.

### *Cophixalus ornatus* adults

One frog from the bath challenge treatment died 25 d post-challenge, but post-mortem changes were too extensive for the specimen to be of use histologically. BIV could not be isolated from any frogs in the challenge or control treatments.

### *Taudactylus acutirostris* adults

One frog from the injection treatment died 1 d post-inoculation and a further frog died 13 d post-inoculation; 1 frog from the bath treatment died 12 d post-challenge. BIV could be isolated from the injected frog which died 13 d post-challenge, but not from any others. No significant histopathological changes could be observed; however the quality of the tissues was poor.

### *Litoria alboguttata* tadpoles and juveniles

Moribund tadpoles were sometimes found lying upside down on the bottom of the aquarium. When disturbed, they either righted themselves or swam in an erratic spinning motion. Juvenile frogs typically died with no external signs. All individuals succumbed to disease. This included 21 tadpoles; most of these died, but a small number were sacrificed when found in a moribund condition. A total of 8 tadpoles completed metamorphosis; subsequently all of these died. The snout-urostyle length of metamorphs ranged from 19 to 29 mm. Moribund or dead tadpoles were found 12, 23, 24, 32, 33, 35, 37, 44, 52, 57, 73, 74, 85, 101 and 105 d post-capture. Dead juveniles were found 67, 77, 104, 145, 166, 176,

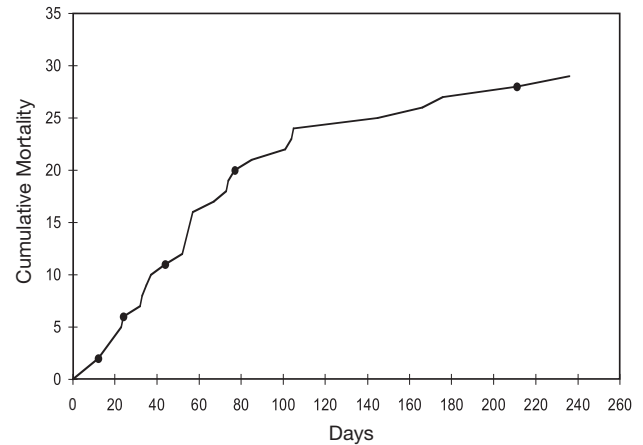


Fig. 4. *Litoria alboguttata*. Cumulative mortality of tadpoles and juveniles. ●: positive viral isolation

211 and 236 d post-capture (Fig. 4). Positive results for viral isolation occurred in tadpoles which died 12, 24 and 44 d post-capture, and in juvenile frogs which died 77 and 211 d post-capture (Fig. 4).

Histopathologically, degeneration of renal tubules ranged from slight to extensive. Affected tubule cells often contained pyknotic nuclei, as did cells within some shrunken glomeruli. Some mild necrosis of interstitial haematopoietic tissue was encountered. Focal degeneration and necrosis of hepatic cells was observed, and was extensive in some frogs. Hepatic cell destruction was sometimes associated with a blood vessel or duct. Significant hemosiderin deposition was frequently seen in the spleen (Fig. 5), kidney, liver, and to a lesser extent the pancreas. Affected areas sometimes were associated with melanin.

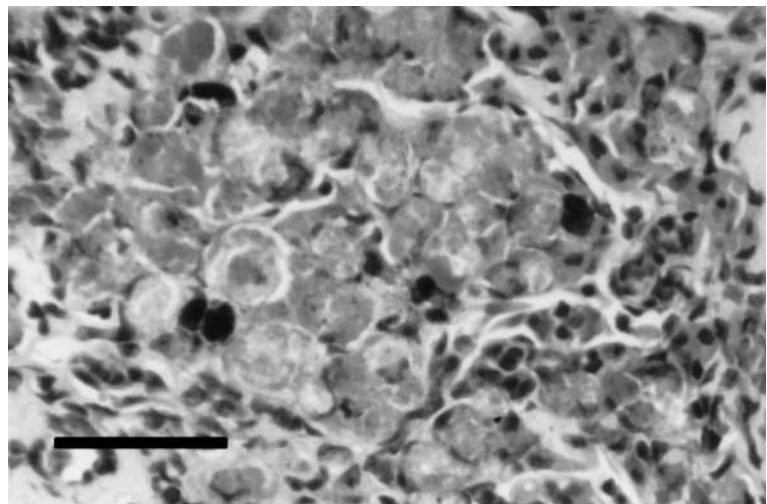


Fig. 5. *Litoria alboguttata*. Spleen from a juvenile that died from exposure to Bohle iridovirus (BIV). Large amounts of hemosiderin deposition are evident. H&E stain. (Scale bar = 39  $\mu$ m)

### *Cyclorana brevipes* juveniles

The 2 juvenile frogs died 5 and 11 d post-capture. Neither frog showed external signs of disease. The frog which died 11 d post-capture was positive for BIV isolation. The carcasses were not in a condition to yield satisfactory histopathology, so these individuals were not processed for histology.

### Moribund *Litoria caerulea* adult from Cranbrook

The frog was in an emaciated state, sluggish and unresponsive to stimuli. Upon dissection, no fat bodies were evident. Massive hemosiderin deposition was evident throughout the liver. Scattered areas of melanisation were also present. The kidney was devoid of haematopoietic tissue. Hemosiderin was present in many of the tubule cells, and some tubule cells were granular with increased eosinophilia. The spleen contained areas of scar tissue, indicative of a previous lesion which had been resolved. A small amount of hemosiderin was also present. Some parasitic *Rhabdias* sp. nematodes were present in the lungs. The blood smear revealed numerous intraerythrocytic cytoplasmic gregarines. BIV could not be isolated in cell culture from any organs, but the frog was positive on PCR and dot blot.

### *Pseudophryne coriacea* juveniles

*Pseudophryne coriacea* were raised from tadpoles collected in northern New South Wales in February 1994. After metamorphosis, they were housed in plastic tanks containing sand, leaves and bark. Water was provided, and they were fed *Drosophila* sp. A total of 9 frogs were housed in the tank. Eight months later, all frogs died over a period of 3 wk. Some of the frogs died suddenly with no apparent external signs. Other frogs showed lethargy, lack of co-ordination, a lack or slow response to stimuli, and difficulty in righting themselves if flipped over. All frogs were negative on viral isolation. The tissue architecture was compromised due to the frogs being frozen, so satisfactory histopathological observation could not be achieved. All frogs processed (6 total) were positive on PCR and dot blot.

### Odds ratio

The odds of a juvenile frog dying as a result of BIV exposure as opposed to the odds of an adult frog dying as a result of BIV exposure was calculated as 66.64 (Table 2).

Table 2. Data from which odds ratio were calculated: odds ratio =  $(68 \times 49)/(10 \times 5) = 66.64$

Stage	Frogs died (N)	Frogs survived (N)
Juveniles	68	10
Adults	5	49

## DISCUSSION

The disease and pathology of the BIV-challenged juvenile *Litoria caerulea*, and the juvenile *L. alboguttata* were similar to that seen in other amphibians (Cullen et al. 1995), fish (Moody & Owens 1994) and reptiles (Ariel 1997). This included predominantly serious necroses of the renal tubules and haematopoietic tissues, splenic and hepatic tissues. Similar acute disease and pathologies have been reported in fishes and amphibians with other closely related ranaviruses, such as EHNIV (Langdon & Humphrey 1987, Langdon 1989), FV3 (Wolf et al. 1968, Granoff 1989), sheatfish iridovirus (Ogawa et al. 1990), catfish iridovirus (Pozet et al. 1992) and *Rana temporaria* iridovirus (Cunningham et al. 1996). The *L. alboguttata* also displayed a significant haemosiderosis, as did the adult *L. caerulea* from Cranbrook. This may be the major pathological sign observed in amphibians which develop a more chronic type of BIV disease, manifesting over a longer period than the acute disease observed in experimental challenge.

Some ranaviruses have a wide host range. Of fish species challenged experimentally with EHNIV, some were highly susceptible while others were completely refractory (Langdon 1989). The effect of iridoviral disease on amphibian and piscine hosts often varies with the life history stage of the host. In many cases, juveniles tend to be more susceptible to disease than adults. BIV was largely consistent with this trend. Juvenile *Litoria caerulea* were highly susceptible to BIV, with an acute disease evident. Adult *L. caerulea* did not show disease signs 30 d post-challenge. Juvenile *Bufo marinus* showed typical acute disease and mortality when challenged with BIV, but adults were relatively resistant (Cullen 2000). Juvenile tortoises *Emydura krefftii* and *Elseya latisternum* were highly susceptible to BIV, whereas adults were resistant (Ariel 1997). Tadpole and juvenile *L. alboguttata* underwent a BIV epizootic, resulting in high mortality. Juvenile *L. latopalmata* and *Limnodynastes terraereginae* were highly susceptible, whereas tadpoles were less susceptible (Cullen et al. 1995). The *Cyclorana brevipes* which died 5 and 11 d post-capture were juveniles, as were the *Pseudophryne coriacea* from Sydney which underwent a *Ranavirus* sp.-associated mortality. The

adult *Litoria rubella* challenged with BIV were resistant, with no mortality observed after 105 d. Adult *Cophixalus ornatus* showed no disease 25 d after challenge with BIV, while some mortality was observed in adult *Taudactylus acutirostris*. The duration of experimental challenge must be taken into consideration when determining susceptibility. Some of the BIV challenges of adult amphibians were terminated at around 30 d. Adult *L. inermis* were relatively resistant to BIV disease, but 1 frog did die 77 d post-challenge, and was positive on PCR and dot blot. The long-term effects of exposure to BIV in adult amphibians are still largely unknown.

The calculated odds ratio of 66.64 as the odds of a juvenile frog dying as a result of BIV exposure as opposed to the odds of an adult frog dying as a result of BIV exposure, indicated that juvenile amphibians had a considerably greater risk of dying from BIV than adults. It should be noted, however, that this data was taken across all amphibian species, and that the time frame over which the experimental infections took place was relatively limited.

Some amphibians exposed to BIV may survive infection and harbour the virus for extended periods. BIV could be reisolated from juvenile *Litoria caerulea* 41 and 42 d post-challenge. BIV was reisolated from tadpole *L. alboguttata* 32 d, and in juveniles 65 and 199 d after the first mortalities were observed. BIV-challenged *L. inermis* tested positive by PCR and dot blot. One of these frogs died 77 d post-challenge, whilst the other was sacrificed 92 d post-challenge and had no signs of disease. One BIV-challenged *L. rubella*, which was sacrificed 105 d post-challenge with no signs of disease, tested positive by PCR and dot blot. The ability of BIV to remain in a host for extended periods would facilitate its continued spread and maintenance in the environment. Such hosts may be important viral reservoirs, promoting infection and mortality in susceptible hosts and, in juveniles, adversely affecting recruitment. BIV could be detected by PCR in individuals which showed no external signs of disease. This would make quarantine for BIV very difficult. With such a large demonstrated and potential host range, the means of transportation and spread of BIV, even intercontinentally, are numerous. There have been repeated examples of the development of sub-clinical iridoviral persistence and the presence of carrier hosts. Near-identical *Ranavirus* sp. isolates have been found throughout the world, and this may have been promoted by such a broad transmission regime.

PCR and dot blot has proved a useful tool in monitoring BIV. Viral isolation in cell culture is insensitive, and sometimes ambiguous. PCR is particularly useful in cases where the role of BIV is equivocal, where it is present in a host at low or subclinical levels, and where

specimens are in poor condition. It is unlikely, however, to distinguish between different *Ranavirus* sp. isolates, and the PCR would detect closely related ranaviruses such as BIV, EHNIV and FV3. The disease and mortality pattern observed in the *Pseudophryne coriacea* in Sydney was typical of BIV infection, and was similar to the mortality observed in *Limnodynastes ornatus* during its original isolation (Speare & Smith 1992). Due to the specimens being frozen, histopathology was compromised, and the insensitive viral isolations were negative. The source of the ranaviral infection was unknown. The emaciated *Litoria caerulea* from Cranbrook also tested positive for PCR and dot blot. The major change observed was massive hemosiderin accumulations in the liver and kidney, similar to that associated with the *L. alboguttata* mortality. This may be an indication of anaemia. Anaemia has been associated with iridoviral infections of amphibians (Wolf et al. 1968, Granoff 1989, Gruia-Gray et al. 1989, Gruia-Gray & Desser 1992) and fish (Evelyn & Traxler 1978, MacMillan & Mucahy 1979, Meyers et al. 1986, Armstrong & Ferguson 1989, Haney et al. 1992, Inouye et al. 1992, Hetrick & Hedrick 1993, Ahne 1994, Oshima et al. 1996, Nakajima et al. 1998). A characteristic of BIV infection is the destruction of haematopoietic tissues, which can result in anaemia. *Rhabdias* sp. and intraerythrocytic gregarines were present in this frog, but these are less likely to cause anaemia. BIV had only been isolated and associated with disease in wild-caught native Australian amphibians once. This was its initial isolation from *Limnodynastes ornatus* (Speare & Smith 1992). The detection of ranaviruses associated with diseased amphibians from Sydney and Cranbrook is therefore significant. The viral source in each case was unknown, as was the particular *Ranavirus* sp. involved. Australian *Ranavirus* isolates currently consist of BIV isolated from amphibians in Townsville in 1989 (Speare & Smith 1992), and EHNIV, which was first isolated from fishes in Victoria in 1984 (Langdon et al. 1986), and later associated with fish epizootics of Victoria, New South Wales and South Australia (Langdon et al. 1986, Hengstberger et al. 1993, Whittington et al. 1994, 1996, Gould et al. 1995). The Australian ranaviruses are similar to other ranaviruses isolated on other continents, and the origin of the closely related ranaviruses remains to be elucidated.

Based on experimental data, BIV has the potential to have significant impacts on native Australian amphibian fauna. It can cause a serious, acute disease resulting in rapid mortality, particularly in juveniles. This may have an adverse affect on the recruitment of some amphibian populations. BIV had a differential susceptibility on amphibian hosts of different species and/or life history stage. Although adult amphibians appeared to be less susceptible to BIV over the experimental



time period, some evidence exists to suggest the virus may still have been causing disease in the adult hosts, and the long-term effects of BIV are largely unknown. BIV can persist in an amphibian host for an extended time period. This, coupled with its ability to survive outside the host, particularly at lower temperatures, would facilitate the maintenance, transmission and transportation of BIV.

*Acknowledgements.* This work was funded by an Australian Postgraduate Research Award, and a Merit Research Grant, James Cook University.

#### LITERATURE CITED

- Ahne W (1994) Viral infections of aquatic animals with special reference to Asian aquaculture. *Annu Rev Fish Dis* 1994: 375–388
- Ahne W, Matasin Z, Bovo G (1995) Antigenic relationship of epizootic haematopoietic necrosis virus (EHN) and iridovirus-like isolates from European green frogs (*Rana esculenta*). *Bull Eur Assoc Fish Pathol* 15:142–144
- Ahne W, Bremont M, Hedrick RP, Hyatt AD, Whittington RJ (1997) Special topic review: iridoviruses associated with epizootic haematopoietic necrosis (EHN) in aquaculture. *World J Microbiol Biotechnol* 13:367–373
- Ariel E (1997) Pathology and serological aspects of Bohle iridovirus infections in six selected water-associated reptiles in North Queensland. PhD thesis, James Cook University, Queensland
- Ariel E, Owens L (1997) Epizootic mortalities in tilapia *Oreochromis mossambicus*. *Dis Aquat Org* 29:1–6
- Armstrong RD, Ferguson HW (1989) Systemic viral disease of the chromide cichlid *Etroplus maculatus*. *Dis Aquat Org* 7:155–157
- Clark HF, Brennan JC, Zeigel RF, Karzon DT (1968) Isolation and characterization of viruses from the kidneys of *Rana pipiens* with renal adenocarcinoma before and after passage in the red eft (*Triturus viridescens*). *J Virol* 2:629–640
- Clark HF, Gray C, Fabian F, Zeigel R, Karzon DT (1969) Comparative studies of amphibian cytoplasmic virus strains isolated from the leopard frog, bullfrog and newt. In: Mizell M (ed) *Biology of amphibian tumors*, Springer-Verlag, Berlin, p 310–326
- Cullen BR (2000) Bohle iridovirus and *Ranavirus* infection in amphibians. PhD thesis, James Cook University, Queensland
- Cullen BR, Owens L, Whittington RJ (1995) Experimental infection of Australian anurans (*Limnodynastes terraereginae* and *Litoria latopalmata*) with Bohle iridovirus. *Dis Aquat Org* 23:83–92
- Cunningham AA, Langton TES, Bennett PM, Lewin JF, Drury SEN, Gough RE, Macgregor SK (1996) Pathological and microbiological findings from incidents of unusual mortality of the common frog (*Rana temporaria*). *Philos Trans R Soc Lond B Biol Sci* 351:1539–1557
- Drury SEN, Gough RE, Cunningham AA (1995) Isolation of an iridovirus-like agent from common frogs (*Rana temporaria*). *Vet Rec* 137:72–73
- Eaton BT, Hyatt AD, Hengstberger S (1991) Epizootic haematopoietic necrosis virus: purification and classification. *J Fish Dis* 14:157–169
- Elliot RM, Kelly DC (1980) Frog virus 3 replication-induction and intracellular distribution of polypeptides in infected cells. *J Gen Virol* 37:28–51
- Essani K, Granoff A (1989a) Amphibian and piscine iridoviruses: proposal for nomenclature and taxonomy based on molecular and biological properties. *Intervirology* 30: 187–193
- Essani K, Granoff A (1989b) Properties of amphibian and piscine iridoviruses: a comparison. In: Ahne W, Kurstak E (eds) *Viruses of lower vertebrates*. Springer-Verlag, Berlin, p 79–85
- Evelyn TPT, Traxler GS (1978) Viral erythrocytic necrosis: natural occurrence in Pacific salmon and experimental transmission. *J Fish Res Board Can* 35:903–907
- Flugel RM, Darai G, Gelderblom H (1982) Viral proteins and adenosine triphosphate phosphohydrolase activity of fish lymphocystis disease virus. *Virology* 122:48–55
- Gould AR, Hyatt AD, Hengstberger SH, Whittington RJ, Coupar BEH (1995) A polymerase chain reaction (PCR) to detect epizootic haematopoietic necrosis virus and Bohle iridovirus. *Dis Aquat Org* 22:211–215
- Granoff A (1989) Viruses of amphibia: an historical perspective. In: Ahne W, Kurstak E (eds) *Viruses of lower vertebrates*. Springer-Verlag, Berlin, p 3–12
- Gruia-Gray J, Desser SS (1992) Cytopathological observations and epizootiology of frog erythrocytic virus in bullfrogs (*Rana catesbeiana*). *J Wildl Dis* 28:34–41
- Gruia-Gray J, Petric M, Desser S (1989) Ultrastructural, biochemical and biophysical properties of an erythrocytic virus of frogs from Ontario, Canada. *J Wildl Dis* 25: 497–506
- Haney DC, Hursh DA, Mix MC, Winton JR (1992) Physiological and hematological changes in chum salmon artificially infected with erythrocytic necrosis virus. *J Aquat Anim Health* 4:48–57
- Hedrick RP, McDowell TS, Ahne W, Torhy C, deKinkelin P (1992) Properties of three iridovirus-like agents associated with systemic infections of fish. *Dis Aquat Org* 13:203–209
- Hengstberger SG, Hyatt AD, Speare R, Coupar BEH (1993) Comparison of epizootic haematopoietic necrosis and Bohle iridoviruses, recently isolated Australian iridoviruses. *Dis Aquat Org* 15:93–107
- Hetrick FM, Hedrick RP (1993) New viruses described in finfish from 1988–1992. *Annu Rev Fish Dis* 1993:187–207
- Inouye K, Yamano K, Maeno Y, Nakajima K, Matsuoka M, Wada Y, Sorimachi M (1992) Iridovirus infection of cultured red sea bream, *Pagrus major*. *Fish Pathol (Gyobyo Kenkyu)* 27:19–27
- Kanchanachan S (1998) An ulcerative disease of the cultured tiger frog, *Rana tigrina*, in Thailand: virological examination. *Newsl Aquat Anim Health Res Inst* 7(2):1–2
- Langdon JS (1989) Experimental transmission and pathogenicity of epizootic haematopoietic necrosis virus (EHN) in redfin perch, *Perca fluviatilis* L., and 11 other teleosts. *J Fish Dis* 12:295–310
- Langdon JS, Humphrey JD (1987) Epizootic haematopoietic necrosis, a new viral disease in redfin perch, *Perca fluviatilis* L., in Australia. *J Fish Dis* 10:289–297
- Langdon JS, Humphrey JD, Williams LM, Hyatt AD, Westbury HA (1986) First virus isolation from Australian fish: an iridovirus-like pathogen from redfin perch, *Perca fluviatilis* L. *J Fish Dis* 9:263–268
- MacMillan JR, Mulcahy D (1979) Artificial transmission to and susceptibility of Puget Sound fish to viral erythrocytic necrosis (VEN). *J Fish Res Board Can* 36:1097–1101
- Mao J, Hedrick RP, Chinchar VG (1997) Molecular characterization, sequence analysis, and taxonomic position of newly isolated fish iridoviruses. *Virology* 229:212–220

- Meyers TR, Hauck AK, Blankenbeckler WD, Minicucci T (1986) First report of viral erythrocytic necrosis in Alaska, USA, associated with epizootic mortality in Pacific herring, *Clupea harengus pallasii* (Valenciennes). *J Fish Dis* 9:479–491
- Moody NJG, Owens L (1994) Experimental demonstration of the pathogenicity of a frog virus, Bohle iridovirus, for a fish species, barramundi *Lates calcarifer*. *Dis Aquat Org* 18: 95–102
- Nakajima K, Maeno Y, Yokoyama K, Kaji C, Manabe S (1998) Antigen analysis of red sea bream iridovirus and comparison with other fish iridoviruses. *Fish Pathol* 33:73–78
- Ogawa M, Ahne W, Fischer-Scherl T, Hoffman RW, Schlotfeldt HJ (1990) Pathomorphological alterations in sheatfish fry *Silurus glanis* experimentally infected with an iridovirus-like agent. *Dis Aquat Org* 9:187–191
- Oshima S, Hata J, Segawa C, Hirasawa N, Yamashita S (1996) A method for direct DNA amplification of uncharacterized DNA viruses and for development of a viral polymerase chain reaction assay: application to the red sea bream iridovirus. *Anal Biochem* 242:15–19
- Pozet F, Morand M, Moussa A, Torhy C, deKinkelin P (1992) Isolation and preliminary characterization of a pathogenic icosahedral deoxyribovirus from the catfish *Ictalurus melas*. *Dis Aquat Org* 14:35–42
- Speare R, Smith JR (1992) An iridovirus-like agent isolated from the ornate burrowing frog *Limnodynastes ornatus* in northern Australia. *Dis Aquat Org* 14:51–57
- Tapiovaara H, Olesen NJ, Linden J, Rimaila-Parnanen E, von Bonsdorff CH (1998) Isolation of an iridovirus from pike-perch *Stizostedion lucioperca*. *Dis Aquat Org* 32:185–193
- Whittington RJ, Philby A, Reddacliff GL, Macgown AR (1994) Epidemiology of epizootic haematopoietic necrosis virus (EHNV) infection in farmed rainbow trout, *Oncorhynchus mykiss* (Walbaum): findings based on virus isolation, antigen capture ELISA and serology. *J Fish Dis* 17:205–218
- Whittington RJ, Kearns C, Hyatt AD, Hengstberger S, Rutzou T (1996) Spread of epizootic haematopoietic necrosis virus (EHNV) in redfin perch (*Perca fluviatilis*) in southern Australia. *Aust Vet J* 73:112–114
- Willis DB, Goorha R, Miles M, Granoff A (1977) Macromolecular synthesis in cells infected by frog virus 3. VII. Transcriptional and post-transcriptional regulation of virus gene expression. *J Virol* 24:326–342
- Willis DB, Goorha R, Chinchar VG (1985) Macromolecular synthesis in cells infected by frog virus 3. *Curr Top Microbiol Immunol* 116:77–106
- Wolf K, Bullock GL, Dunbar CE, Quimby MC (1968) Tadpole edema virus: a viscerotropic pathogen for anuran amphibians. *J Infect Dis* 118:253–262
- Zupanovic Z, Musso C, Lopez G, Louriero CL, Hyatt AD, Hengstberger S, Robinson AJ (1998) Isolation and characterization of iridoviruses from the giant toad *Bufo marinus* in Venezuela. *Dis Aquat Org* 33:1–9

Editorial responsibility: Pernel Zwart,  
Utrecht, The Netherlands

Submitted: September 30, 2000; Accepted: November 20, 2001  
Proofs received from author(s): May 2, 2002