

This Provisional PDF corresponds to the article as it appeared upon acceptance. Fully formatted PDF and full text (HTML) versions will be made available soon.

An affordable, quality-assured community-based system for high-resolution entomological surveillance of vector mosquitoes that reflects human malaria infection risk patterns

Malaria Journal 2012, **11**:172 doi:10.1186/1475-2875-11-172

Prosper P Chaki (pchaki@ihi.or.tz)
Yeromin P Mlacha (ymlacha@ihi.or.tz)
Daniel Msellem (dmsellemu@ihi.or.tz)
Athuman Muhili (pchaki@ihi.or.tz)
Alpha D Malishee (amalishee@ihi.or.tz)
Zacharia J Mtema (zmtema@ihi.or.tz)
Samson S Kiware (skware@ihi.or.tz)
Ying Zhou (yzhou@nd.edu)
Neil F Lobo (nlobo@nd.edu)
Tanya L Russell (tanya.russell@jcu.edu.au)
Stefan Dongus (sdongus@ihi.or.tz)
Nicodem J Govella (govella@ihi.or.tz)
Gerry F Killeen (gkilleen@ihi.or.tz)

ISSN 1475-2875

Article type Research

Submission date 23 February 2012

Acceptance date 24 May 2012

Publication date 24 May 2012

Article URL <http://www.malariajournal.com/content/11/1/172>

This peer-reviewed article was published immediately upon acceptance. It can be downloaded, printed and distributed freely for any purposes (see copyright notice below).

Articles in *Malaria Journal* are listed in PubMed and archived at PubMed Central.

For information about publishing your research in *Malaria Journal* or any BioMed Central journal, go to

© 2012 Chaki *et al.*; licensee BioMed Central Ltd.

This is an open access article distributed under the terms of the Creative Commons Attribution License (<http://creativecommons.org/licenses/by/2.0>), which permits unrestricted use, distribution, and reproduction in any medium, provided the original work is properly cited.

<http://www.malariajournal.com/authors/instructions/>

For information about other BioMed Central publications go to

<http://www.biomedcentral.com/>

An affordable, quality-assured community-based system for high-resolution entomological surveillance of vector mosquitoes that reflects human malaria infection risk patterns

Prosper P Chaki^{1,2*}

* Corresponding author

Email: pchaki@ihi.or.tz

Yeromin Mlacha^{1,2}

Email: ymlacha@ihi.or.tz

Daniel Msellemu^{1,3}

Email: dmsellemu@ihi.or.tz

Athuman Muhili¹

Email: pchaki@ihi.or.tz

Alpha D Malishee¹

Email: amalishee@ihi.or.tz

Zacharia J Mtema^{1,4}

Email: zmtema@ihi.or.tz

Samson S Kiware^{1,5}

Email: skiware@ihi.or.tz

Ying Zhou⁶

Email: yzhou@nd.edu

Neil F Lobo⁶

Email: nlobo@nd.edu

Tanya L Russell^{1,7}

Email: tanya.russell@jcu.edu.au

Stefan Dongus^{1,2}

Email: sdongus@ihi.or.tz

Nicodem J Govella^{1,2}

Email: govella@ihi.or.tz

Gerry F Killeen^{1,2}

Email: gkilleen@ihi.or.tz

¹ Ifakara Health Institute, Coordination Office, Kiko Avenue, Mikocheni, PO Box 78373, Dar es Salaam, United Republic of Tanzania

² Liverpool School of Tropical Medicine, Vector Group, Pembroke Place, Liverpool L3 5QA, UK

³ London School of Hygiene and Tropical Medicine, Keppel Street, London WC1E 7HT, UK

⁴ Boyd Orr Centre for Population and Ecosystem Health, College of Medicine, Veterinary Medicine and Life Sciences, University of Glasgow, Glasgow G12 8QQ, UK

⁵ Department of Mathematics, Statistics, and Computer Science, Marquette University, Milwaukee, WI 53201-1881, USA

⁶ Eck Institute for Global Health, University of Notre Dame, Notre Dame, IN 46556, USA

⁷ James Cook University, School of Public Health, Tropical Medicine and Rehabilitation Sciences, Cairns, 4870, Australia

Abstract

Background

More sensitive and scalable entomological surveillance tools are required to monitor low levels of transmission that are increasingly common across the tropics, particularly where vector control has been successful. A large-scale larviciding programme in urban Dar es Salaam, Tanzania is supported by a community-based (CB) system for trapping adult mosquito densities to monitor programme performance.

Methodology

An intensive and extensive CB system for routine, longitudinal, programmatic surveillance of malaria vectors and other mosquitoes using the Ifakara Tent Trap (ITT-C) was developed in Urban Dar es Salaam, Tanzania, and validated by comparison with quality assurance (QA) surveys using either ITT-C or human landing catches (HLC), as well as a cross-sectional survey of malaria parasite prevalence in the same housing compounds.

Results

Community-based ITT-C had much lower sensitivity per person-night of sampling than HLC (Relative Rate (RR) [95% Confidence Interval (CI)] = 0.079 [0.051, 0.121], $P < 0.001$ for *Anopheles gambiae s.l.* and 0.153 [0.137, 0.171], $P < 0.001$ for Culicines) but only moderately differed from QA surveys with the same trap (0.536 [0.406, 0.617], $P = 0.001$ and 0.747 [0.677, 0.824], $P < 0.001$, for *An. gambiae* or *Culex* respectively). Despite the poor sensitivity of the ITT per night of sampling, when CB-ITT was compared with QA-HLC, it proved at least comparably sensitive in absolute terms (171 versus 169 primary vectors caught) and cost-effective (153US\$ versus 187US\$ per *An. gambiae* caught) because it allowed more spatially extensive and temporally intensive sampling (4284 versus 335 trap nights distributed over 615 versus 240 locations with a mean number of samples per year of

143 versus 141). Despite the very low vectors densities (Annual estimate of about 170 *An gambiae s.l* bites per person per year), CB-ITT was the only entomological predictor of parasite infection risk (Odds Ratio [95% CI] = 4.43[3.027,7. 454] per *An. gambiae* or *Anopheles funestus* caught per night, P =0.0373).

Discussion and conclusion

CB trapping approaches could be improved with more sensitive traps, but already offer a practical, safe and affordable system for routine programmatic mosquito surveillance and clusters could be distributed across entire countries by adapting the sample submission and quality assurance procedures accordingly.

Background

Recent successful malaria control efforts have overwhelmingly relied on proven intra-domiciliary vector control interventions, such as long-lasting insecticidal nets (LLINs) [1-7] and indoor residual spraying (IRS) [8-11], that kill mosquitoes feeding or resting inside houses [12]. Although these indoor interventions have proven potential to reduce *Plasmodium falciparum* transmission and associated disease burden, neither of these alone is sufficient to even approach elimination in endemic areas [13-18] because of persistent vector populations that rest outdoors (exophilic), feed outdoors (exophagic), or feed on animals (zoophagic) [15,18-20]. National Malaria Control Programmes (NMCPs) presently face the challenge of monitoring declining transmission levels mediated by dramatically altered residual vectorial systems with greater sensitivity than ever before. This task will become more challenging as universal coverage with LLINs and IRS is achieved, sustained and even supplemented with additional complementary measures [12,15]. Such residual transmission is often persistent, self-sustaining and quite localized, and may be perennial in some hotspots [21-26], necessitating the implementation of sensitive, longitudinal and extensive vector surveys. Traditional entomologic-monitoring tools have been designed and evaluated for research purposes, primarily in the holoendemic settings where malaria research has traditionally been based. These tools may, therefore, be impractical to apply on scales large enough to detect and target such hotspots of low, but persistent transmission.

Most malaria-endemic developing countries are challenged with a persistent shortage of expertise relating to vector control, and indeed to health systems generally [27-31]. These deficiencies have resulted in weak monitoring, evaluation and management of vector-borne diseases, including malaria. Even if large numbers of expert personnel were available to staff large, predominantly vertical, vector surveillance programmes, the cost of sustaining such human resources would be prohibitive in most African countries [32-34]. Thinking among public health practitioners has therefore shifted to consider devolving the responsibility for vector surveillance and also control to members of the respective communities [32,33,35,36]. This is envisaged to have two advantages: First, this strategy is anticipated to be affordable and can therefore be sustained indefinitely on large scales. Secondly, community involvement is thought to be an effective way for promoting quick uptake and communal support for accountable, politically-viable, public health programmes [32,33,35-40].

Of the numerous options for supplementing LLINs and IRS with complementary vector control measures [12], is the historically-established strategy of larval source management [33,36,40-43]. Larval source management embraces environmental management and the

regular application of insecticides to aquatic habitats [44-46] which have not or cannot be modified or eliminated because of their ownership or function [47]. The efficacy and effectiveness of larviciding has recently been evaluated in a range of research and programmatic settings, on scales varying from small rural villages [48-50] all the way through to extensive tracts of a large city [39,51]. The Urban Malaria Control Programme (UMCP) in Dar es Salaam, Tanzania represents an example in which larviciding was implemented on large scales by local government actors through sustainable and affordable systems embedded in routine municipal services [32,39,52]. Specifically, the UMCP implemented three main routine tasks, (1) routine aquatic habitat surveillance, (2) regular application of microbial larvicides and (3) adult mosquito monitoring [39,51]. All these activities are implemented by community owned resource persons (CORPs) assigned to well defined areas of responsibility that the CORP ideally lives in or close to [39,52-54] and that are typically smaller than 1 km² [55,56].

While this article focuses on the third activity, namely surveillance of adult mosquitoes, the spatial extensiveness and temporal intensiveness required of this monitoring platform are defined by the challenges of comprehensive larval surveillance and control [57]. Specifically, habitats must be searched for and treated on a weekly bases because microbial larvicides have little residual effect [58] and *Anopheles gambiae* complex mosquitoes develop from egg to adult in less than seven days, in habitats that can be ephemeral and difficult to detect [47,59-61]. It is therefore essential to independently monitor adult vector densities so that gaps in larval surveillance and control [53,54], as well as influx of dispersing vectors from neighbouring areas can be detected. While larval surveillance is clearly required to rapidly respond to such dynamic ecology, such surveys only report on known habitats and locally potential to generate adult mosquitoes. To enable evidence-based, responsive management of the large, decentralized community-based (CB) labour force, which executes larval control on a daily basis [49], an equally spatially- extensive (Figure 1) and temporally-intensive surveillance system is required [39,55,56]. To address this need, the UMCP conducted routine monitoring of adult mosquitoes densities as the primary, most direct indicator of programme performance on a weekly basis [39,51].

Figure 1 Map of Dar es Salaam showing the wards and respective locations where community-based adult mosquito surveillance was conducted

The initial monitoring system utilised outdoor human landing catch (HLC) because it was the only method known to reliably catch *Anopheles* malaria vectors with satisfactory sensitivity in this setting [39]. The previous system consisted of a team of 67 CORPs who conducted monthly surveys of 268 locations distributed across 55 km² of Dar es Salaam with a population of >600,000 people [39,51,55,56,62]. Each CORP was assigned four sites in one particular neighbourhood (*mtaa*), one of which was surveyed each week by HLC for one night. Although this interim transmission monitoring system using HLC did produce useful surveillance data, the laborious nature of implementing this community-based scheme on the ground and the vertical management system required to maintain reliable performance were costly and difficult to sustain indefinitely as a routine activity [63]. Moreover, the potential health risks associated with exposure to potentially infectious mosquito bites during human landing catches necessitated the development of a mosquito trapping method which is not only more scalable, affordable and practical [63-65], but also safe for the operator [66].

The Ifakara Tent Trap (ITT) [63-66] was developed to address these specific problems and operates passively all night long without skilled personnel using a single human volunteer

who simply sleeps in the tent to act as bait. A number of efficacy studies with the B-model confirm that it is the only reasonably sensitive alternative to HLC [64,65] in urban Dar es Salaam and a small scale pilot study indicated that it is effective in the hands of CB staff with minimal supervision [63]. Furthermore, the latest C-model has been shown to fully protect the user and may even be more sensitive [66].

This paper reports on an evaluation of the effectiveness of a novel extensive and intensive decentralized system for routine entomological surveillance, in which the C design of the ITT was applied by community-based personnel. The effectiveness of this decentralised system was contrasted with an independent quality assured centralized system applying both ITT-C and HLC. The results of these alternative decentralized and centralized surveys were compared with cross-sectional household malaria infection surveys to assess their respective epidemiological relevance in the same set of sampled locations.

Methods

Study area

Dar es Salaam is a hot, humid coastal city and experiences two rainy seasons: the short rains from mid-October to early-December followed by the long, more intense rains from March to June. Dar es Salaam is Tanzania's biggest and most economically important city with an estimated population of 3.3 million in 2010, living within an administrative region of 1,400 km² [67,68]. The city is divided into three municipalities, namely Kinondoni, Temeke and Ilala, and these municipalities are further divided into a total of 72 wards. The study site encompasses 31 administrative wards at the heart of the city, comprised of one set of 15 wards previously described as the UMCP study area [51] and another 16 neighbouring wards, totalling approximately 2.65 million residents living in an area of 160 km² [67]. Before the initiation of larviciding, the area experienced modest malaria transmission rate with an entomological inoculation rate (EIR) of approximately one infectious bite per person per year [39,51]. The main malaria vectors are members of the *An. gambiae* complex, which prefer to feed outdoors and may therefore be only moderately vulnerable to control with indoor-targeted insecticidal means such as ITNs [62,69].

The Dar es Salaam UMCP

All UMCP activities are coordinated by the City Medical Office of Health, and fully integrated into the decentralized administrative system of Dar es Salaam [32,39]. The UMCP operates on all six administrative levels of the city: the city council, the three municipal councils it oversees, the 15 wards chosen from those municipalities, containing 67 neighbourhoods referred to as *mitaa* in Kiswahili (singular *mtaa*, meaning literally street), and more than 3000 housing clusters known as ten-cell-units (TCUs), each of which is subdivided into a set of plots corresponding largely to housing compounds [39,51,56]. The main tasks of the three upper levels within UMCP are programme management and supervision, whereas actual mosquito larval surveillance and control is organized at ward level and implemented at the level of TCUs and their constituent plots. In principle, a TCU is a cluster of ten houses with an elected representative known as an *mjumbe*, but typically comprises between 20–100 houses in practice [55]. As a prerequisite for effective management of a larviciding programme, the UMCP implemented routine larval habitat surveillance between 2004 and 2008 [39,53,54]. From March 2006 to date, the UMCP

implemented regular larviciding of all mosquito breeding habitats as a means to kill aquatic mosquito stages, prevent adult emergence and reduce malaria incidence and prevalence through a community-based but vertically managed delivery system [32,39,52-54]. UMCP began systematic larviciding in three wards (one from each municipality) in April 2006 [51-54], following complete participatory mapping of the area [55,56] and CB baseline surveys of the breeding habitats. The programme subsequently scaled-up larvicide application to nine wards in May 2007. In March 2008 the programme was extended to all the 15 wards of the original study area. In this particular study, community-based adult mosquito surveys were set up across the original 15 UMCP wards plus an additional 16 adjacent wards from outside the study area to include non-UMCP wards chosen from the same three municipalities where there was no larviciding taking place. Overall, this 160 km² area contained 31 wards, 85 *mitaa*, approximately 8,000 TCUs and approximately 2.65 million residents (Figure 1).

Routine programmatic adult mosquito surveillance by community-based personnel

Based on a pilot-scale evaluation in 12 wards that used the B-design ITT [63], a CB scheme for trapping adult mosquitoes using the C-design ITT [66] was developed and implemented as a replacement for the previous system that relied on HLC [51]. ITT-C differs from the earlier ITT-B prototype, in that the netting panel lying between the entry funnels and the bait host is bisected into two compartments within the trap. This enables a person in the process of collecting mosquitoes to stand up within the trap while protected from mosquito bites. In addition, there are two long sealable cotton sleeves hanging from each trap chamber to enable operators to safely remove mosquitoes by using mouth aspirators while protected from bites. In contrast, the B design required the opening of the long zipper across the netting panel and aspirating from within the open trap chamber, thereby exposing the operator to mosquito bites [66].

The entomological survey was initially set up across the previous 15 UMCP intervention wards, each of which comprised of a cluster of 20 sampling sites, making a total of 300 sentinel sites distributed across the UMCP study area that were routinely surveyed on monthly basis. This was primarily meant to serve as a tool for routine monitoring of progress of the larviciding programme activities by identifying areas with residual vector populations and, presumably, malaria transmission. Adult mosquito surveillance was therefore decentralized to ward level to coincide with management practice for concurrent community-based larval surveillance and larvicide application. The system adopted a decentralized sampling protocol [63], that enabled unskilled community members, rather than trained entomologists sent from a centralized team, to capture, record and submit mosquito samples, without any night time supervision by the research team, and with only occasional contact with programme staff. This system was modified from that of the original pilot [63] so that only one volunteer per ward was recruited, compared to one per neighbourhood or *mtaa* (3–7 per ward) in the pilot system, to conduct monthly surveys of 20 locations per ward rather than weekly surveys of four locations per neighbourhood (12–28 per ward).

Overall, thirty-one, volunteers including fifteen from the 15 original UMCP wards were recruited and remunerated at a rate of 3500 Tanzanian shillings (2010 US\$ 2.70) per night of trapping. Each volunteer took responsibility for trapping mosquitoes for one night per month at each of the 20 locations within his or her assigned ward. They were allowed to choose, at their own discretion, which nights of the week (Monday to Friday) they would sleep in the traps, the sequence they would visit each of their 20 assigned locations, and what time they

entered and left the traps, under the condition that they recorded these dates and times in standardized forms. This was considered necessary for promoting a sense of ownership and responsibility for the project, and making working conditions relaxed, conducive and flexible so that the modest remuneration remained sufficiently attractive to retain CORPs and minimize any incentive to fabricate data. Furthermore, there were no consequences to the CORPs for not trapping on a particular night so long as all the 20 sites were sampled at any week day of that particular month. The 20 sampling sites in each ward were deliberately chosen by the local leaders and the CORP, with the intention that they were well-distributed across the ward, close to obvious *Anopheles* larval habitats, and preferably within walled compounds so that safety of the sleeping volunteer was assured.

The volunteers were supplied with all the necessary materials including paper cups, air-tight containers, aspirators, petroleum ether and bicycles for transport. This allowed them to continuously trap, collect and store mosquitoes for a period of one week, recording their observations and trapping sequence daily on a form they were provided with. Samples were submitted each week to the central laboratory for further processing using the bicycles that each CORP was provided with to assist them in moving the trap between the sites within the ward. Each night the trap was erected outside of the designated house and the volunteer slept in it over night to act as a bait to attract human-feeding mosquitoes. Note that the user is completely protected by the fine netting trap chambers where the mosquitoes are trapped [66]. Mosquitoes were removed from the trap chambers using aspirators, transferred into paper cups, and then anesthetized with a small ball of cotton wool soaked in petroleum ether. Dead mosquitoes were then transferred into an air-tight (1.5 ml Eppendorf tubes, Nantong Shenhua Laboratory Apparatus Co., Ltd) container half-filled with silicagel for storage and preservation before submission to the central mosquito laboratory each week. To control for and minimize data fabrication by CORPs, standardized forms were supplied (Additional file 1: Table S1) and they were obliged to record the approximate number of each relevant mosquito taxon caught, early each morning immediately after they finished collecting, and to document confirmation of his visit with the signature of the house owner where the trapping took place that particular night. At the laboratory, the samples were received by a technician who verified their content before formally recording their acceptance in good condition in a registry book.

This protocol for routine CB sampling with ITT-C across the original 15 UMCP wards, where larviciding had already been established as a routine activity, began in February 2009 whereas the 16 non-intervention wards outside this area started in October 2009. These additional wards were included as a preparatory step for scaling up city-wide vector surveillance and larviciding, as well as to enable subsequent evaluation of the protocol as applied at large scale across the full range of vector densities found in the city. Overall, this CB system for routine surveillance of mosquito biting intensities spanned over 620 designated sentinel sites (clusters of twenty in each of the 31 wards) of which 615 were actually sampled on a monthly basis in practice (Figure 1).

Randomized quality assurance entomological surveys

To assess the quality of data collected by the decentralized, routine adult mosquito surveys described above, two quality assurance (QA) adult mosquito surveillance teams were recruited, each comprising five catchers earning slightly more than their counterparts in the routine CB system. The first team, earning 4000 TShs (2010: US\$ 3.50 per person per night) was responsible for repeating adult mosquito collection using ITT at five locations scheduled

one day after the routine CB mosquito surveillance team had applied the same trapping method in these same locations. The sampling framework for the sites involved randomly selecting five sites from the list of locations where the CB collectors had set their traps the previous night. Therefore, this team was responsible for repeating adult mosquito sampling at randomly chosen locations, over four days of the week (Tuesday to Friday), totalling 20 locations sampled for resurvey by the QA team each week. The second team, earning 8,000 Tanzanian Shillings (2010: US\$6.15) per day, was responsible for repeating adult mosquito collections using HLC at the same randomly-selected locations used the previous nights for QA-ITT and the night before that for routine CB collections with ITT. This second team worked three days per week (Wednesday to Friday) at the same five randomly chosen locations as the first QA team, totalling 15 locations sampled per week. Outdoor HLC was conducted at each of these houses from 6 pm to 7 am for a period of 45 minutes every hour, allowing for 15 minutes break each hour, as previously described [51,62]. These two QA teams were vertically and regularly supervised, including random night time spot checks by the research team for quality control. The locations selected for QA follow up was not disclosed to either the QA teams nor to the supervising research staff until the day after the routine survey was set up, in the late evening of the day for the first QA surveys using ITT. This was necessary to avoid any possibility of collusion between CORPs in the routine and QA teams and thereby minimize risk of data fabrication. CORPs from the two QA teams were dropped by vehicle at their scheduled stations, accompanied by the field supervisor. The mosquitoes collected by the ITT-C and HLC QA teams were collected by vehicle and taken to the central laboratory the following morning when the catchers had finished their collections.

Laboratory processing and data reporting

In the laboratory, all mosquitoes were identified morphologically using taxonomic keys [70] as males or females, and as *An. gambiae s.l.*, *Anopheles funestus*, *Anopheles ziemanni*, *Culex* species, or *Aedes* species. Abdominal status was scored as gravid/semi-gravid, fed or unfed for all the *Anopheles* and for Culicines. All *Anopheles* caught were subsequently desiccated over silica gel and kept at room temperature until they were further processed. These classification and count data were first recorded on standardized paper forms (Additional file 1: Table S1) and then reported using mobile phones with specifically designed menus and made available to stakeholders and project staff at the following [71] This web site was also loaded with automatically generated (pre-coded R script) weekly synthesis report for the UMCP management staff and other stakeholders to review at will. A wing or a leg of every *An. gambiae s.l.* mosquito caught was analyzed by PCR to identify its exact species within the *An. gambiae* complex [72]. An enzyme-linked immunosorbent assay (ELISA) using a monoclonal antibody that recognizes a repetitive epitope on the circumsporozoite-protein of *P. falciparum* was used to establish malaria sporozoite infection status in each individual *An. gambiae s.l.* specimen [73].

Cross sectional epidemiological survey

All the 620 sites used for the routine entomological surveillance were mapped to the TCU level [55,56] and the households within each were carefully listed. Three teams of four people, comprised of a supervisor, community-based health nurse and two interviewers conducted the cross-sectional household surveys (March to August 2010) in all households of the house or housing compound (median = 4 households) which routine CB mosquito surveillance was conducted. All people occupying the household were included in the survey,

excluding children who were three months old or less. Systematic screening of all the inhabitants of each selected household who were present at the time of the survey, and consented to participate, was carried out to determine their malaria infection status. Parasitological examination was carried out by the community-based health nurses by finger prick with a sterile lancet. A small amount (5 μ l) of blood was drawn from consenting residents using micro pipettes and placed on MAL-Pf® (ICT Diagnostics, Cape Town, South Africa) malaria rapid diagnostic test kits (RDTs) using histidine rich protein-2 as the test antigen (HRP-2). Such HRP-2 RDTs, including this specific kit, have increasingly been proven sensitive, reliable and accurate for routine malaria diagnosis in the field [74-77]. While this specific test kit is prone to a phenomenon called prozone that results in weak responses to very high density parasitemias, no false negatives were documented in a recent evaluation of this and other comparable HRP-2 based products [78]. Questionnaire responses and RDT results were recorded electronically in the field using Socket SoMo 650 Series (Socket Mobile, Inc) portable digital assistants programmed in Visual CE.

Data analysis

All the data were entered in coded numeric form, cleaned, restructured and analyzed using SPSS® 18.0 except where described otherwise.

The mean relative sensitivity of the three surveillance methods was estimated by fitting a generalized linear model (GLM) with a negative binomial distribution to the mosquito catch for each recorded trap night, treating surveillance method as a categorical independent variable with location as the subject and date as a within-subject source of variation with first order autocorrelation. Correlation between the mean catch (transformed as $\log(y + 1)$) at each location obtained with the three alternative vector surveillance methods were tested pair-wise using Pearson's linear correlation test. Associations between the relative sensitivities of CB trapping with ITT and mosquito densities measured by the two QA survey methods were tested for using binary logistic regression [79]. Specifically, GLMs were fitted to the proportion of all mosquitoes caught by the CB-ITT in a given location and week where all methods were applied.

The catches of female *An. gambiae* or *An. funestus* and *Culex* spp were aggregated by survey method, yielding mean catches for each method per trap night per location. On several occasions, all the three survey methods recoded zero values even after aggregation so an artificial incremental scatter was added to generate the none-zeros and allow separation and visualization of otherwise identical data points. Since divisions by zero gives infinite values, data for each location thus included the sum of several observations of the catches for the specific survey method. In order to establish the density dependence of sampling sensitivity of ITT through either CB or QA methods, the mean catches of the collections by alternative survey methods (CB-ITT and QA-ITT) was divided by the sum of the QA (QA-ITT + QA-HLC) collections, and this denominator was treated as the continuous independent variable in a generalized linear model.

To allow direct comparison of the three surveys in terms of cost-effectiveness only the direct and non-direct expenditures incurred by each system, during the period when all three systems were operating in parallel are considered. These included monthly personnel costs (salaries and volunteer allowances) for each team, supplies and transport costs. Transport costs comprised of the upfront costs for buying a bicycle or a vehicle (for both the CB and QA-surveys, respectively) plus the three years or ten years-depreciated costs (for the bicycles

and vehicle, respectively) and their respective monthly-recurrent (service and maintenance) costs. All cost estimates are presented in Tanzanian shillings as recorded at the time they were incurred and then converted into 2010 US\$ at a rate of 1408.02 shillings per dollar.

To qualitatively examine differences in age-prevalence profiles associated with malaria transmission hot spots, infection prevalence data from household surveys were initially stratified based on either the presence or absence of any detectable primary vectors (any *An. gambiae s.l.* or *An. funestus* caught) by a given survey method. Subsequently, this approach was refined to stratify on the basis of being amongst the 5% highest mean catches of primary vectors. In all cases, differences between the two strata for each vector surveillance method, in terms of the distribution of infection probability among the following age classes, was tested by χ^2 analysis using Microsoft Excel®: less than 5 years, 5 to 19 years and 20 years or more.

Explanatory logistic regression models (GLMM) of malaria infection prevalence were fitted and selected in a forward stepwise manner using *R* version 2.12.2. The association of malaria prevalence with the following independent variables was assessed: mean catch at a given location with each individual entomological survey type, LLIN use, presence of eaves, presence of ceiling, presence of window screening (good indicators of socioeconomic status), larviciding activity, use of insecticide consumer products, travel in the previous month or residence elsewhere, sex and living with both parents. To adjust for spatial and temporal heterogeneities TCU location identity and date were incorporated into all models as random effects. Only variables exhibiting evidence of association with malaria infection risk ($P \leq 0.05$) when tested as a single categorical independent variable was retained in the model [80,81]. The variables with the lowest P-value obtained in the exploratory analysis were included first. Based on qualitative examination of age-prevalence relationships in this dataset (see results), this logistic regression analysis was applied only to children and teenagers (<19 years) because the relationship between their exposure and infection prevalence appeared to be higher and to increase with age in areas with higher vector density.

Ethical consideration and informed consent

The study received ethical clearance from the Medical Research Coordination Committee of the Tanzanian National Institute of Medical Research (Reference numbers NIMR/HQ/R.8a/Vol.IX/279 and 324). Informed consent was obtained from all the participants, including the mosquito catchers and the house owners where the sampling took place, as well as the participants in the household surveys. All the volunteers recruited for conducting HLC were provided with prophylactic treatment with atovaquone-proguanil (Malarone®) free-of-charge, which they were obliged to take once a day to prevent malaria infection. In order to deal with the possibility of poor compliance or drug failure, participants in mosquitoes-trapping surveys who developed any symptoms such as fever, chills, headache or nausea, were tested for malaria parasites and would have been offered free treatment if found to be infected but this eventuality never occurred during the study. All participants in either the household surveys found to be infected with malaria were offered supervised treatment with artemether-lumefantrine (Coartem®; Novartis Pharma AG, Basel, Switzerland) prescribed by a clinical officer and provided by the community health nurse, following national treatment policies and guidelines, as soon as the RDT test was complete. However, if the participant refused this offer of treatment, they were referred to a nearby health facility and given all required transport and other logistical assistance to attend. Women of child-bearing age found to be infected with malaria were offered treatment with

artemether-lumefantrine unless they were known or suspected to be pregnant and in their first trimester, in which case were instead treated with oral quinine as per national guidelines.

Results

Mean mosquitoes catches by each surveillance system over the course of the study are presented in Figure 2. Of the 372,655 mosquitoes caught by both CB and QA entomological surveillance systems the vast majority (99%) were assorted Culicine taxa: *Culex* spp. (372,161) and *Mansonia* spp. (7). Of the small minority of mosquitoes caught which were *Anopheles* (0.13%; 487), most were *An. gambiae* sl (92.0%; 448) with the remainder comprising *An. funestus* (0.61%; 3) and *An. ziemanni* (7.39%; 36). Consistent with previous reports from this setting [51,63], the majority of *An. gambiae* sl specimens successfully amplified by PCR were *An. gambiae* ss (77.5%; 178) with the remainder being *Anopheles arabiensis* (21.91%; 39). The trapping system had no influence upon sibling species composition ($\chi^2 = 0.157$, d.f. =2, $P = 0.924$). Both successfully amplified specimens from the *An. funestus* group were *An. funestus* s.s. Only one (0.56%) of the *An. gambiae* ss caught was infected with *P. falciparum* sporozoites.

Figure 2 The monthly mean *Anopheles gambiae* (A) and Culicine (B) densities from the three alternative survey methods being community-based surveys using Ifakara Tent Trap (CB-ITT) and quality assurance surveys based on both human landing catch (QA-HLC) and tent trap (QA-ITT)

Relative sensitivity of alternative survey systems using tent traps

Overall, the sensitivity of ITT-C [66] for trapping both *Anopheles* and Culicines (Table 1) was far lower than HLC when applied by either CB or QA surveys. These relative sensitivity estimates for the C design of the ITT were approximately half of those previously reported for its predecessor, the B design [63-65], for both mosquito taxa. The ITT was less sensitive for both mosquito taxa when applied through the CB surveys than the QA surveys (Table 1) but not dramatically so (Relative rate [95% confidence interval] = 0.536 [0.406,0.617], $P = 0.001$ for *An.gambiae s.l.* and 0.747 [0.677,0.824], $P < 0.001$ for *Culex* spp.). However, the mean mosquito catches from the CB-ITT surveys ($r^2 = 0.241$, $P < 0.001$), but not those from the QA-ITT surveys ($r^2 = 0.012$, $P = 0.871$), positively correlated with those from the QA surveys using the gold standard HLC method.

Table 1 Relative sampling sensitivity of community-based (CB) and quality assurance (QA) surveys of mosquitoes with ITT, compared with QA surveys by human landing catch (HLC), as estimated by generalized linear models (GLM)

Method	Number caught	Trap nights	Locations surveyed	Mean trap nights per location	Mean Catch[95%CI]	Relative Rate [95%CI]	P
<i>Anopheles gambiae s.l.</i>							
CB-ITT	208	8171	615	13.29	0.026 [0.021,0.033]	0.079 [0.051,0.121]	<0.001
QA-ITT	53	931	293	3.18	0.057 [0.039,0.085]	0.182 [0.101,0.328]	<0.001
QA-HLC	187	335	240	1.39	0.560 [0.385, 0.815]	1.00*	NA
<i>Culex spp</i>							
CB-ITT	287,398	8171	615	13.29	20.7 [19.3, 22.0]	0.153 [0.137, 0. 171]	<0.001
QA-ITT	35,642	931	293	3.18	27.1 [23.9, 30.8]	0.215 [0.190, 0. 243]	<0.001
QA-HLC	49,121	335	240	1.39	147.7 [133. 8,163.0]	1.00*	NA

NA: not applicable

CI: confidence interval

* Reference category

Both the CB and QA surveys with ITT exhibited high density-dependent sensitivity when compared to the gold standard QA surveys with HLC (Figure 3), which is consistent with previous observations [64]. All ITT surveys were clearly less sensitive at high mosquito densities compared to the reference QA surveys with HLC but at very low densities the ITT is at least sensitive than the gold standard HLC. It is notable that not only is the intercept of the plot for the CB-ITT surveys lower than for QA-ITT surveys, the downward slope as mosquito density increases is much steeper (Figure 3). This suggests that high mosquito densities reduce the sensitivity of the ITT, and that standards of practice for its use by CB staff are also adversely affected by high mosquito densities or associated environmental variables, the most obvious of which is rainfall.

Figure 3 Density-dependence of alternative ITT-based survey methods relative to the HLC-based QA surveys for sampling *Anopheles gambiae s.l.* (A and C) and *Culex spp.* (B and D). The density-dependence is illustrated by plotting the catches from alternative methods divided by the corresponding sum of catches from QA-ITT and QA-HLC or both against the absolute CB-ITT catches

Despite the much lower average sensitivity of CB surveys with ITT per person night of sampling (Table 1), and declining sensitivity observed as mosquito densities increase (Figure 3), overall CB surveys had slightly greater absolute sensitivity in terms of the total number of mosquitoes caught (Table 2). This occurs because it was possible to maintain these CB surveys in a slightly larger number of locations but, more importantly, because they enabled consistent longitudinal monthly monitoring of mosquito density, resulting in a far greater number of samples per survey location (Figure 4, Table 2). By comparison, the well-controlled QA surveys were clearly more sensitive per person-night of trapping (Table 1) but could only visit any given sites within this large, widely distributed set of locations (Figure 1) on one or two occasions per year (Figure 4).

Table 2 Crude estimates of the costs for each surveillance method per night of trapping and per *An. gambiae s.l.* caught over the selected period outlined in Figure 2 when all three surveillance systems were simultaneous in operation

Estimated Parameter	Units	Quality assured		
		Community-based	QA-ITT	QA-HLC
Number of samples	Person-nights	4284	457	335
Number caught	No. of <i>An. gambiae s.l.</i>	171	42	169
Mean catch	No. of <i>An. gambiae s.l.</i> per person-night	0.04	0.09	0.50
Volunteer costs	TSh	14,994,000	1,828,000	2,680,000
Salary costs	TSh	10,589,820	13,793,820	24,413,820
Transport costs	TSh	3,100,000	20,340,000	20,340,000
Total Expenditure	TSh	28,683,820	35,961,820	47,433,820
Cost per sample	TSh per night of sampling	6,695.57	78,691.07	141,593.49
Costs per specimen of <i>An. gambiae s.l.</i>	TSh per <i>An. gambiae s.l.</i>	167,741.64	856,233.81	280,673.49

All costs are presented in Tanzanian Shillings (TShs). The corresponding estimates of the expenditures in US dollars can be computed at a mean 2010 exchange rate of 1408.02 TShs per US\$

Figure 4 The frequency distributions of the person trap nights and mosquito densities across a range of survey locations by the three surveillance systems

The intensive and extensive sampling frame of the CB surveys was possible because it was the cheapest of the three surveillance systems, costing approximately US\$6 per night of sampling, compared to US\$72 for running the QA-ITT-C and US\$100 for the QA-HLC. In this low transmission setting with very sparse vector populations, entomological transmission surveillance proved an expensive undertaking but CB surveys proved the most affordable approach overall, despite their low sensitivity per person-night of sampling (Table 1). An average of US\$163 was spent per specimen of *An. gambiae s.l.* caught by the CB surveys, as compared to approximately US\$787 and US\$199 for QA surveys using ITT and HLC, respectively (Table 2).

Relationship between mean mosquito densities and malaria infection prevalence

Consistent with the range of vector densities observed in this urban setting (Figure 4), parasite prevalence data from the cross-sectional survey conducted at 357 of the locations confirmed that there was generally moderate transmission across the study area (Figure 5) with an overall prevalence of 13.3% (421/3173). Malaria infection prevalence consistently increased with age (OR [95% CI] = 1.23[1.059,1.392], $P = 0.0166$), rather than peaking among young children as was observed previously in 2004–06 [51] indicating a loss of age- and exposure-associated immunity, presumably as a result of lowered mean transmission intensity across the area since that time or a reflection of asymptomatic adult infections that usually go unreported but were seen in this survey [82].

Figure 5 Age-specific malaria parasite prevalence stratified by mean vector density (*An. gambiae* and *An. funestus* combined) for each mosquito surveillance systems. For the left hand column (A, C, E), *An. gambiae*-mean catch is stratified as 0 or >0 and for the right hand column *An. gambiae*-mean catch is stratified using the upper and lower ranges being ≥ 0.25 , versus ≤ 0.22 for CB-ITT (B), ≥ 4.00 versus ≤ 3.00 for QA-ITT (D) and ≥ 1.00 versus ≤ 0.50 for QA-HLC (F). The number at the top of each bar represents the total number individuals within particular age group from a set stratified surveyed clusters tested for malaria with RDT

When the surveyed locations were stratified by vector density, using the three different survey systems and two alternative stratification criteria, prevalence peaked amongst older children and teenagers in the upper stratum for five out of six of the stratification criteria, and in one case the age-prevalence profile differed significantly between the strata (Figure 5). Further analysis with logistic regression, which allowed us to control for cluster effects associated with the sampled household clusters and the times they were surveyed, was therefore restricted to data from children and teenagers, amongst whom prevalence appears to be consistently positively related to both age and exposure to transmission.

Logistic regression analysis of infection status among residents under twenty years of age revealed that, other than location ($P \leq 0.001$) and the time of the survey ($P < 0.001$), only the mean *An. gambiae* catch obtained from the CB surveys was significant as a predictor of

malaria risk (Table 3). The fitted model includes a significant positive intercept for the dependent variable (Table 3). Malaria infection risk was therefore significant even where no primary vectors could be detected (Table 3), suggesting that appreciable malaria transmission amongst residents of Dar es Salaam occurs away from their homes. Baseline infection risk increases with *An. gambiae s.l.* density and a four-fold increase in risk is estimated for individuals living in areas where an average of one *An. gambiae* is caught per person-night of CB surveillance with ITT (Table 3). Neither of the QA surveys of vector density using either ITT or HLC surveys had any appreciable predictive value of malaria prevalence (Table 3). Possible confounders that were tested and then excluded from all the final model included the type of floor, walls and roof (good indicators of socioeconomic status), use of insecticide consumer products, travel in the previous month or residence elsewhere, sex and living with both parents. Interestingly, having both closed eaves and a ceiling ($P = 0.532$), or having one of them ($P = 0.804$), or having one of these plus screened windows ($P = 0.850$) had no apparent impact on malaria risk despite their high levels of uptake arising from the perception that they protect against mosquito bites [51,83]. Using an untreated net ($P = 0.607$) also had no impact and it is also notable that neither of the interventions previously shown to confer protection [51], namely use of an LLIN ($P = 0.094$) or living in an area covered with larviciding ($P = 0.428$) had any significant protective effect or improved the model fit. Similarly, none of the three observed house characteristics, namely type of floor ($P = 0.5432$), wall ($P = 0.7602$) and roof ($P = 0.3694$), as well as the use of personal protection measures, such as insecticide consumer products including mosquito coils ($P = 0.3839$), topical repellents ($P = 0.2566$), or insecticide sprays ($P = 0.2799$) had significant effect nor impact on the goodness of fit of model.

Table 3 *Anopheles gambiae* mean catch per night as risk indicator for malaria parasite prevalence among children and teenagers (<20 years of age) as determined by fitting separate logistic regression models (GLMM) to data from each of the three survey methods

Survey type	OR[95%CI]	P
<i>Community-based with ITT mean An. gambiae s.l. catch</i>	4.43 [3.027,7.454]	0.0373
Intercept	0.096[-0.173,0.366]	<0.0001
<i>Quality assurance with ITT mean An. gambiae s.l. catch</i>	1.00[0.235, 1. 241]	0.989
Intercept	0.111[-0.245,0.467]	<0.0001
<i>Quality assurance with HLC mean An. gambiae s.l. catch</i>	0.95[0.048, 1.00]	0.448
Intercept	0.102[-0.219,0.424]	<0.0001

See Table 2 for details of sample sizes for each entomological survey data set. Note that for all three models location and date included in the models were also highly significant random effects

Discussion

Community-based use of the ITT with no supervision from the research team proved the most cost-effective and epidemiologically relevant way to monitor adult malaria vector mosquitoes and was also safer than the HLC gold standard method. Although this approach has low relative sensitivity per night of sampling, it is also by far the least expensive and allows far more intensive longitudinal sampling so that it is slightly more effective than even QA-HLC in terms of absolute sensitivity, cost-effectiveness and spatial extensiveness. Critically, the

ability to conduct longitudinal sampling on a monthly temporal cycle that is sufficiently frequent to capture seasonal variation in vector density at hundreds of locations concurrently gives this implementation system epidemiological predictive value that traditional survey methods, relying on closely supervised research teams, did not even distantly approach (Table 3).

This CB survey achieved a spatial resolution of one trap-night sample per 0.27 km² every month and 0.93 km² every week across the 31 volunteers and their assigned wards. In demographic terms, this is equivalent to one trap night for every 5,848 residents per month or 21,739 residents per week. Such intensive and extensive monitoring of adult mosquito responds to the needs of the local UMCP larviciding programme because it is matched to the scales to which responsibility for applying larvicides is devolved so that gaps in coverage, sensitivity and quality of these activities can be identified and rectified. The distribution of adult mosquito sampling locations therefore encompassed the assigned target areas of every person responsible for larvicide application so that their individual personal performance can be evaluated objectively and independently, based on one or more observations each month. In spite of the proven efficacy of larvicides [84,85], the success of a larviciding programme relies on the sensitivity of detection and treatment of all potential larval habitats by large numbers of widely-distributed staff managed in a decentralized way at ward level [53,86]. This spatially extensive, community-based surveillance with the ITT has demonstrated the potential for identifying malaria transmission hotspots on very fine scales (Table 3). Longitudinal CB surveillance with the ITT or any other practical, ideally more sensitive, alternative trapping technology may be a useful means for mapping residual vector populations and enable targeted control with supplementary vector control measures such as larval source management that complement LLINs or IRS. An ideal trap is presumably low cost, less bulk, easily transportable and preferably independent of electrical power.

Although various traps and survey platforms have been developed and implemented for trapping, monitoring and studying mosquito vectors of malaria and other disease in various parts of the world [87-93], currently declining malaria transmission levels [4-6,94,95] and mosquito densities [17] pose a particular challenge to monitoring and evaluating disease trends. To date, mosquito vector surveillance has mostly depended on the use of conventional trapping methods applied under strict research-controlled settings, with very few reports of application through community-based platforms. Research-controlled studies are often limited in scope in terms of spatial and temporal coverage due to associated high running costs and therefore very expensive to maintain on scales large enough to detect hot spots of persistent transmission levels occurring on very fine scales and support decisive management of vector control activities. This is exacerbated by the limited number of expert personnel in most malaria endemic countries. Even when community based surveys have been implemented with conventional tools, the quality of unsupervised data collection has been a concern to many public experts. In this study, the ITT was used to sample mosquitoes at a much higher spatial resolution as an outdoor trap. In comparison with other recently reported surveys using window exit traps (Table 4), the use of ITT appears to be more user-friendly and affordable because it is less disruptive and intrusive to householders since it is set up outside of the house. While all the survey platforms described in (Table 4) successfully engaged local communities in their operations, only this approach developed in Tanzania includes external quality assurance mechanisms.

Table 4 Comparison of the surveillance system described in this paper with some published large scale and longitudinal entomological surveys using window exit traps (WET), Ifakara tent traps (ITT) and human landing catches for monitoring malaria vector populations

Study and location	Surveillance tool	Implementation platforms	Quality assurance	Number of cluster	Sampling sites per cluster	Trap-nights per month	Temporal scale (Trap nights)	Duration of the surveys	Total number of trap months
Abilio et al. 2010 Zambezia province, central northern Mozambique	WET	Community-based (home owner) as stand alone	No	19	6	114	788	2006-2007 and 2009-2010	48
Sharp et al. 2007 Bioko Island, Equatorial Guinea	WET	Community-based (home owner) as stand alone	No	16	6	96	59,307	2004-2005	24
Chaki et al. (Urban Dar es Salaam, Tanzania)	ITT and HLC	Community-based (community volunteers)	Yes	31	20	615	8,171	Feb 2009-Oct 2010	20

All survey systems compared here were based on monthly sampling intervals

Despite the advantages that the tent trap and community-based survey system appear to offer, both the ITT technology and the delivery system described here have significant limitations, some of which synergize negatively. The ITT has important limitations as an entomological and epidemiological surveillance tool because of limited sensitivity, particularly at high mosquito densities (Figure 3 and reference [64]). The observation that this problem is exacerbated when used through the CB system presumably reflects our informal observations of the poor compliance by the CORPs with setting up and sleeping in the traps during wet season peaks of mosquito density when rain may enter the trap. Moreover, the bulky nature of the trap makes it impractical for indoor use and therefore unsuitable for surveying the proportion of human exposure to mosquito bites that occurs indoors. Even for outdoor applications, the space requirements of the trap poses particular challenges in densely populated informal settlements in urban settings. Moreover, even with the predominantly flat topography of Dar es Salaam, the bulkiness of the trap makes it too heavy and difficult to be moved between sampling locations by one volunteer without at least a bicycle.

Conclusions

As the global malaria elimination initiative [94,96-100] advances, spatially extensive longitudinal vector surveillance systems, such as the CB trapping system reported here, will become increasingly necessary to characterize sparse residual vector populations across large areas, and for monitoring and evaluating impact of interventions upon them. In practical terms, we recommend that further advances with CB mosquito surveillance systems will require development of improved trap technologies that will ideally no longer require human bait. Such products should be more sensitive, less bulky, less expensive, and should readily trap the outdoor-biting, zoophagic mosquito species that increasingly dominate residual transmission across the tropics [18-20,101]. Several experimental prototypes already exist that use synthetic odour mixtures as bait and are highly efficacious for sampling a broad spectrum of mosquito species [102-106], including some that representatively samples the taxa that attack humans [107]. This study, therefore recommends that such evaluated trap designs can be adapted for the surveillance of a variety of mosquito-borne diseases including malaria, lymphatic filariasis and dengue fever.

Competing interests

We declare that none of the investigators has any conflict of interest. None of the funders had any role in the evaluation design, data collection, analysis, interpretation, drafting of the manuscript or decision to publish.

Authors' contributions

PPC took the lead in designing and implementing the study, data analysis and in writing of the manuscript. YM, AM and DM participated in the implementation of various aspects of the adult mosquito and household parasitology surveys as well as data management. NJG, ADM, ZJM, TLR and SK supported the design and implementation of the various study aspects including data management. GFK was involved in designing the larviciding system that these vector monitoring systems are intended to support. YZ and NFL supported the PDA programming, data collection and management. SD contributed substantially to producing the maps and drafting of the manuscript. GFK supervised all aspects of the study

design, implementation, data analysis and drafting of the manuscript. All authors read and approved the final manuscript.

Acknowledgements

We thank the entire team who participated in this survey, especially those who conducted intensive adult mosquito surveillance, and the entire household survey team, for their perseverance and commitment. We thank the entire UMCP team for their cooperation during the survey, especially Ms. Khadija Kannady, the UMCP manager for her cooperation and support during study design and data collection. Thanks to all the Dar es Salaam residents and their respective TCU, ward and municipal leaders for their tremendous support throughout the study. We thank Dr CJ Drakeley and Dr Stephenson for valuable discussions which contributed to the drafting of the manuscript. The digital elevation model used in Figure 1 was kindly provided by Richard Sliuzas (ITC Enschede) and the University of Dortmund. We are grateful to the Malaria Transmission Consortium, the Innovative Vector Control Consortium (both funded by the Bill & Melinda Gates Foundation; awards 41151 and 29122, respectively), the Wellcome Trust (Research Career Development Fellowship award 076806 to GFK) and to Valent BioSciences Corporation for financial support of this study.

References

1. Fegan GW, Noor AM, Akhwale WS, Cousens SN, Snow RW: **Effect of expanded insecticide-treated bednet coverage on child survival in rural Kenya: a longitudinal study.** *Lancet* 2007, **370**:1035–1039.
2. Bhattarai A, Ali AS, Kachur SP, Martensson A, Abbas AK, Khatib R, Al-Mafazy AW, Ramsan M, Rotllant G, Gerstenmaier JF: **Impact of artemisinin-based combination therapy and insecticide-treated nets on malaria burden in Zanzibar.** *PLoS Med* 2007, **4**:e309.
3. Nyarango PM, Gebremeskel T, Mebrahtu G, Mufunda J, Abdulmumini U, Ogbamariam A, Kosia A, Gebremichael A, Gunawardena D, Ghebrat Y, Okbaldet Y: **A steep decline of malaria morbidity and mortality trends in Eritrea between 2000 and 2004: the effect of combination of control methods.** *Malar J* 2006, **5**:33.
4. O'Meara WP, Mangeni JN, Steketee R, Greenwood B: **Changes in the burden of malaria in sub-Saharan Africa.** *Lancet Infect Dis* 2010, **10**:545–555.
5. Ceesay SJ, Casals-Pascual C, Erskine J, Anya SE, Duah NO, Fulford AJC, Sesay SSS, Abubakar I, Dunyo S, Sey O: **Changes in malaria indices between 1999 and 2007 in The Gambia: a retrospective analysis.** *Lancet* 2008, **372**:1545.
6. D'Acremont V, Lengeler C, Genton B: **Reduction in the proportion of fevers associated with *Plasmodium falciparum* parasitaemia in Africa: a systematic review.** *Malar J* 2010, **9**:240.

7. Hay SI, Guerra CA, Gething PW, Patil AP, Tatem AJ, Noor AM, Kabaria CW, Manh BH, Elyazar IR, Brooker S: **A world malaria map: *Plasmodium falciparum* endemicity in 2007.** *PLoS Med* 2009, **6**:e1000048.
8. Sharp BL, Kleinschmidt I, Streat E, Maharaj R, Barnes KI, Durrheim DN, Ridl FC, Morris N, Seocharan I, Kunene S, JJ LAG, Mthembu JD, Maartens F, Martin CL, Barreto A: **Seven years of regional malaria control collaboration--Mozambique, South Africa, and Swaziland.** *Am J Trop Med Hyg* 2007, **76**:42–47.
9. Sharp BL, Ridl FC, Govender D, Kuklinski J, Kleinschmidt I: **Malaria vector control by indoor residual insecticide spraying on the tropical island of Bioko.** *Equatorial Guinea. Malar J* 2007, **6**:52.
10. Kleinschmidt I, Schwabe C, Benavente L, Torrez M, Ridl FC, Segura JL, Ehmer P, Nchama GN: **Marked increase in child survival after four years of intensive malaria control.** *Am J Trop Med Hyg* 2009, **80**:882.
11. Kleinschmidt I, Schwabe C, Shiva M, Segura JL, Sima V, Mabunda SJA, Coleman M: **Combining indoor residual spraying and insecticide-treated net interventions.** *Am J Trop Med Hyg* 2009, **81**:519.
12. Ferguson HM, Dornhaus A, Beeche A, Borgemeister C, Gottlieb M, Mulla MS, Gimnig JE, Fish D, Killeen GF: **Ecology: A Prerequisite for Malaria Elimination and Eradication.** *PLoS Med* 2010, **7**: e1000303.
13. Killeen GF, Smith TA, Ferguson HM, Mshinda H, Abdulla S, Lengeler C, Kachur SP: **Preventing childhood malaria in Africa by protecting adults from mosquitoes with insecticide-treated nets.** *PLoS Med* 2007, **4**:e229.
14. Killeen GF, Smith TA: **Exploring the contributions of bed nets, cattle, insecticides and excitorepellency to malaria control: a deterministic model of mosquito host-seeking behaviour and mortality.** *Trans R Soc Trop Med Hyg* 2007, **101**:867–880.
15. Griffin JT, Hollingsworth TD, Okell LC, Churcher TS, White M, Hinsley W, Bousema T, Drakeley CJ, Ferguson NM, Basáñez MG: **Reducing *Plasmodium falciparum* Malaria Transmission in Africa: A Model-Based Evaluation of Intervention Strategies.** *PLoS Med* 2010, **7**:e1000324.
16. Gubler DJ: **Resurgent vector-borne diseases as a global health problem.** *Emerg Infect Dis* 1998, **4**:442.
17. Russell TL, Lwetoijera DW, Maliti D, Chipwaza B, Kihonda J, Charlwood JD, Smith TA, Lengeler C, Mwanyangala MA, Nathan R, Knols BG, Takken W, Killeen GF: **Impact of promoting longer-lasting insecticide treatment of bed nets upon malaria transmission in a rural Tanzanian setting with pre-existing high coverage of untreated nets.** *Malar J* 2010, **9**:187.
18. Bugoro H, Cooper R, Butafa C, Iro'ofa C, Mackenzie D, Chen CC, Russell T: **Bionomics of the malaria vector *Anopheles farauti* in Temotu Province, Solomon Islands: issues for malaria elimination.** *Malar J* 2011, **10**:133.

19. Reddy MR, Overgaard HJ, Abaga S, Reddy VP, Caccone A, Kiszewski AE, Slotman MA, Malabo EG: **Outdoor host seeking behaviour of *Anopheles gambiae* mosquitoes following initiation of malaria vector control on Bioko Island.** *Equatorial Guinea. Malar J* 2011, **10**:184.
20. Russell TL, Govella N, Azizi S, Drakeley C, Kachur SP, Killeen G: **Increased proportions of outdoor feeding among residual malaria vector populations following increased use of insecticide-treated nets in rural Tanzania.** *Malar J* 2011, **10**:80.
21. Giglioli G: **Ecological change as a factor in renewed malaria transmission in an eradicated area: A localized outbreak of *Anopheles aquasalis*-transmitted malaria on the Demerara River estuary, British Guiana, in the fifteenth year of *Anopheles darlingi* and malaria eradication.** *Bull World Health Organ* 1963, **29**:131.
22. Malakooti MA, Biomndo K, Shanks GD: **Reemergence of epidemic malaria in the highlands of western Kenya.** *Emerg Infect Dis* 1998, **4**:671.
23. Zucker JR: **Changing patterns of autochthonous malaria transmission in the United States: a review of recent outbreaks.** *Emerg Infect Dis* 1996, **2**:37.
24. Bousema T, Drakeley C, Gesase S, Hashim R, Magesa S, Mosha F, Otieno S, Carneiro I, Cox J, Msuya E: **Identification of hot spots of malaria transmission for targeted malaria control.** *J Infect Dis* 2010, **201**:1764–1774.
25. Bejon P, Williams TN, Liljander A, Noor AM, Wambua J, Ogada E, Olotu A, Osier FH, Hay SI, Farnert A, Marsh K: **Stable and unstable malaria hotspots in longitudinal cohort studies in Kenya.** *PLoS Med* 2010, **7**:e1000304.
26. Cohen JM, Moonen B, Snow RW, Smith DL: **How absolute is zero? An evaluation of historical and current definitions of malaria elimination.** *Malar J* 2010, **9**:213.
27. Najera JA: **Malaria and the work of WHO.** *Bull World Health Organ* 1989, **67**:229.
28. San Martín JL, Brathwaite-Dick O: *Delivery issues related to vector control operations: a special focus on the Americas.* Geneva: World Health Organization; 2006.
29. Breman JG, Alilio M, Mills A: **Conquering the intolerable burden of malaria: what's new, what's needed: A summary.** *Am J Trop Med Hyg* 2004, **7**(Suppl 2):1–15.
30. Najera JA: **Malaria control: achievements, problems and strategies.** *Parassitologia* 2001, **43**:1–89.
31. Trigg PI, Kondrachine AV: **Commentary: malaria control in the 1990s.** *Bull World Health Organ* 1998, **76**:11.
32. Mukabana WR, Kannady K, Kiama GM, Ijumba JN, Mathenge EM, Kiche I, Nkwengulila G, Mboera L, Mtasiwa D, Yamagata Y, van Schayk I, Knols BG, Lindsay SW, Caldas De Castro M, Mshinda H, Tanner M, Fillinger U, Killeen GF: **Ecologists can enable communities to implement malaria vector control in Africa.** *Malar J* 2006, **5**:9.

33. Townson H, Nathan R, Zaim M, Guillet P, Manga L, Bos R, Kindhauser M: **Exploiting the potential of vector control for disease prevention.** *Bull World Health Organ* 2005, **83**:942–947.
34. Killeen GF, Mukabana WR, Kalongolela MS, Kannady K, Lindsay SW, Tanner M, Caldas de Castro M, Fillinger U: **Habitat targeting for controlling aquatic stages of malaria vectors in Africa.** *Am J Trop Med Hyg* 2006, **74**:517–518.
35. Toledo ME, Vanlerberghe V, Baly A, Ceballos E, Valdes L, Searret M, Boelaert M, Van der Stuyft P: **Towards active community participation in dengue vector control: results from action research in Santiago de Cuba, Cuba.** *Trans R Soc Trop Med Hyg* 2007, **101**:56–63.
36. WHO: *Global Strategic Framework for Integrated Vector Management.* Geneva: World Health Organization; 2004.
37. Bryan RT, Balderrama F, Tonn RJ, Dias JC: **Community participation in vector control: lessons from Chagas' disease.** *Am J Trop Med Hyg* 1994, **50**(6 Suppl):61–71.
38. Winch P, Kendall C, Gubler D: **Effectiveness of community participation in vector-borne disease control.** *Health Policy Plan* 1992, **7**:342.
39. Fillinger U, Kannady K, William G, Vanek MJ, Dongus S, Nyika D, Geissbuehler Y, Chaki PP, Govella NJ, Mathenge EM, Singer BH, Mshinda H, Lindsay SW, Tanner M, Mtasiwa D, de Castro MC, Killeen GF: **A tool box for operational mosquito larval control: preliminary results and early lessons from the Urban Malaria Control Programme in Dar es Salaam.** *Tanzania. Malar J* 2008, **7**:20.
40. Killeen GF, Fillinger U, Kiche I, Gouagna LC, Knols BGJ: **Eradication of *Anopheles gambiae* from Brazil: lessons for malaria control in Africa?.** *Lancet Infect Dis* 2002, **2**:618–627.
41. Kitron U, Spielman A: **Suppression of transmission of malaria through source reduction: antianopheline measures applied in Israel, the United States, and Italy.** *Rev Infect Dis* 1989, **11**:391–406.
42. Killeen GF: **Following in Soper's footsteps: northeast Brazil 63 years after eradication of *Anopheles gambiae*.** *Lancet Infect Dis* 2003, **3**:663–666.
43. Keiser J, Singer BH, Utzinger J: **Reducing the burden of malaria in different eco-epidemiological settings with environmental management: a systematic review.** *Lancet Infect Dis* 2005, **5**:695–708.
44. Rozendaal JA: *Vector Control. Methods for use by individuals and communities.* Geneva: WHO; 1997.
45. Walker K: *A review of control methods for African malaria vectors.* Washington, DC: US Agency for International Development; 2002:54.

46. Walker K, Lynch M: **Contributions of *Anopheles* larval control to malaria suppression in tropical Africa: review of achievements and potential.** *Med Vet Entomol* 2007, **21**:2–21.
47. Mutuku F, Alaii JA, Bayoh MN, Gimnig JE, Vulule JM, Walker ED, Kabiru E, Hawley WA: **Distribution, description and local knowledge of larval habitats of *Anopheles gambiae* sensu lato in a village in Western Kenya.** *Am J Trop Med Hyg* 2006, **74**:44–53.
48. Fillinger U, Lindsay SW: **Suppression of exposure to malaria vectors by an order of magnitude using microbial larvicides in rural Kenya.** *Trop Med Int Health* 2006, **11**:1629–1642.
49. Fillinger U, Ndenga B, Githeko AK, Lindsay SW: **Integrated malaria vector control with microbial larvicides and insecticide treated nets in western Kenyan highlands: a controlled trial.** *Bull World Health Organ* 2009, **87**:655–665.
50. Shililu JI, Tewolde GM, Brantly E, Githure JI, Mbogo CM, Beier JC, Fusco R, Novak RJ: **Efficacy of *Bacillus thuringiensis israelensis*, *Bacillus sphaericus* and temephos for managing *Anopheles* larvae in Eritrea.** *J Am Mosq Control Assoc* 2003, **19**:251–258.
51. Geissbuhler Y, Kannady K, Chaki PP, Emidi B, Govella NJ, Mayagaya V, Kiama M, Mtasiwa D, Mshinda H, Lindsay SW, Tanner M, Fillinger U, de Castro MC, Killeen GF: **Microbial larvicide application by a large-scale, community-based program reduces malaria infection prevalence in urban Dar es Salaam.** *Tanzania. PLoS One* 2009, **4**:e5107.
52. Vanek MJ, Shoo B, Mtasiwa D, Kiama M, Lindsay SW, Fillinger U, Kannady K, Tanner M, Killeen GF: **Community-based surveillance of malaria vector larval habitats: a baseline study in urban Dar es Salaam.** *Tanzania. BMC Public Health* 2006, **6**:154.
53. Chaki PP, Govella N, Shoo B, Abdullah H, Tanner M, Fillinger U, Killeen GF: **Achieving high coverage of larval-stage mosquito surveillance: challenges for a community-based mosquito control programme in urban Dar es Salaam Tanzania.** *Malar J* 2009, **8**.
54. Chaki PP, Dongus S, Fillinger U, Kelly A, Killeen GF: **Community-owned resource persons for malaria vector control: enabling factors and challenges in an operational programme in Dar es Salaam, United Republic of Tanzania.** *Human Resource Health* 2011, **9**:21.
55. Dongus S, Nyika D, Kannady K, Mtasiwa D, Mshinda H, Fillinger U, Drescher AW, Tanner M, Castro MC, Killeen GF: **Participatory mapping of target areas to enable operational larval source management to suppress malaria vector mosquitoes in Dar es Salaam.** *Tanzania. Int J Health Geogr* 2007, **6**:37.
56. Dongus S, Mwakalinga V, Kannady K, Tanner M, Killeen G: **Participatory mapping as a component of operational malaria vector control in Tanzania.** In *Geospatial Analysis of Environmental Health. Volume 4.* 2011:321–336.

57. Killeen GF, Tanner M, Mukabana WR, Kalongolela MS, Kannady K, Lindsay SW, Fillinger U, de Castro MC: **Habitat targeting for controlling aquatic stages of malaria vectors in Africa.** *Am J Trop Med Hyg* 2006, **74**:517.
58. Majambere S, Lindsay S, Green C, Kandeh B, Fillinger U: **Microbial larvicides for malaria control in The Gambia.** *Malar J* 2007, **6**:76.
59. Mutuku FM, Bayoh MN, Hightower AW, Vulule JM, Gimnig JE, Mueke JM, Amimo FA, Walker ED: **A supervised land cover classification of a western Kenya lowland endemic for human malaria: associations of land cover with larval *Anopheles* habitats.** *Int J Health Geogr* 2009, **8**:19.
60. Sattler MA, Mtasiwa D, Kiama M, Premji Z, Tanner M, Killeen GF, Lengeler C: **Habitat characterization and spatial distribution of *Anopheles sp.* mosquito larvae in Dar es Salaam (Tanzania) during an extended dry period.** *Malar J* 2005, **4**:4.
61. Gillies MT, DeMeillon B: *The Anophelinae of Africa South of the Sahara (Ethiopian zoogeographical region)*. Johannesburg: South African Institute for Medical Research; 1968.
62. Geissbühler Y, Chaki P, Emidi B, Govella NJ, Shirima R, Mayagaya V, Mtasiwa D, Mshinda H, Fillinger U, Lindsay SW, Kannady K, Caldas De Castro M, Tanner M, Killeen GF: **Interdependence of domestic malaria prevention measures and mosquito-human interactions in urban Dar es Salaam, Tanzania.** *Malar J* 2007, **6**:126.
63. Sikulu M, Govella NJ, Ogoma SB, Mpangile J, Kambi SH, Kannady K, Chaki PC, Mukabana WR, Killeen GF: **Comparative evaluation of the Ifakara tent trap-B, the standardized resting boxes and the human landing catch for sampling malaria vectors and other mosquitoes in urban Dar es Salaam.** *Tanzania. Malar J* 2009, **8**:197.
64. Govella NJ, Chaki PP, Geissbuhler Y, Kannady K, Okumu F, Charlwood JD, Anderson RA, Killeen GF: **A new tent trap for sampling exophagic and endophagic members of the *Anopheles gambiae* complex.** *Malar J* 2009, **8**:157.
65. Govella NJ, Chaki PP, Mpangile J, Killeen GF: **Monitoring mosquitoes in urban Dar es Salaam: Evaluation of resting boxes, window exit traps, CDC light traps, Ifakara tent traps and human landing catches.** *Parasit & Vectors* 2011, **4**.
66. Govella NJ, Moore JD, Killeen GF: **An exposure-free tool for monitoring adult malaria mosquito populations.** *Am J Trop Med Hyg* 2010, **83**:596.
67. National Bureau of Statistics: *The 2002 population and housing census general report*. [<http://www.nbs.go.tz>].
68. World Urbanization Prospects: *The 2007 Revision Population Database*.: ; .
69. Govella NJ, Okumu FO, Killeen G: **Insecticide treated nets can reduce malaria transmission by mosquitoes which feed outdoors.** *Am J Trop Med Hyg* 2010, **82**:415–419.
70. Gillies MT, Coetzee M: *A supplement to the Anophelinae of Africa South of the Sahara (Afrotropical region)*. Johannesburg: South African Medical Research Institute; 1987.

71. www.e-surveillance.ihl.or.tz.
72. Scott JA, Brogdon WG, Collins FH: **Identification of single specimens of the *Anopheles gambiae* complex by the polymerase chain reaction.** *Am J Trop Med Hyg* 1993, **49**:520–529.
73. Burkot TR, Williams JL, Schneider I: **Identification of *Plasmodium falciparum*-infected mosquitoes by a double antibody enzyme-linked immunosorbent assay.** *Am J Trop Med Hyg* 1984, **33**:783–788.
74. Murray CK, Bennett JW: **Rapid diagnosis of malaria.** *Interdiscip Perspect Infect Dis* 2009, **2009**:415953.
75. Tanowitz HB, Weiss LM, Kirchhoff LV: **Parasitic Diseases, Diagnostic Approaches, and Therapies.** *Inflammation* 1999, **27**:30.
76. Clinton K: **Rapid diagnosis of malaria.** *Interdiscip Perspect Infect Dis* 2009.
77. Moody A: **Rapid diagnostic tests for malaria parasites.** *Clin Microbiol Rev* 2002, **15**:66–77.
78. Gillet P, Maltha J, Hermans V, Ravinetto R, Bruggeman C, Jacobs J: **Malaria rapid diagnostic kits: quality of packaging, design and labelling of boxes and components and readability and accuracy of information inserts.** *Malar J* 2011, **10**:39.
79. Collett D: *Modelling binary data*. Second Edition editionth edition.: Chapman and Hall/CRC; 2003:1-367.
80. Mundry R, Nunn CL: **Stepwise model fitting and statistical inference: turning noise into signal pollution.** *Am Nat* 2009, **173**:119–123.
81. Bolker BM, Brooks ME, Clark CJ, Geange SW, Poulsen JR, Stevens MHH: **Generalized linear mixed models: a practical guide for ecology and evolution.** *Trends Ecol Evol* 2009, **24**:127–135.
82. Dongus S, Chaki P, Govella NSM, Kannady K, Russell T, Killeen GF, Smithson P: **Community-based larviciding of mosquitoes contributes to malaria reduction.** Volume 6. Dar es Salaam: Ifakara Health Institute; 2011.
83. Ogoma SB, Kannady K, Sikulu M, Chaki PP, Govella NJ, Mukabana WR, Killeen GF: **Window screening, ceilings and closed eaves as sustainable ways to control malaria in Dar es Salaam.** *Tanzania. Malar J* 2009, **8**:221.
84. Barbazan P, Baldet T, Darriet F, Escaffre H, Djoda DH, Hougard JM: **Impact of treatments with *Bacillus sphaericus* on *Anopheles* populations and the transmission of malaria in Maroua, a large city in a savannah region of Cameroon.** *J Am Mosq Control Assoc* 1998, **14**:33–39.

85. Fillinger U, Knols BG, Becker N: **Efficacy and efficiency of new *Bacillus thuringiensis var israelensis* and *Bacillus sphaericus* formulations against Afrotropical anophelines in Western Kenya.** *Trop Med Int Health* 2003, **8**:37–47.
86. Killeen GF, Fillinger U, Knols BGJ: **Advantages of larval control for African malaria vectors: Low mobility and behavioural responsiveness of immature mosquito stages allow high effective coverage.** *Malar J* 2002, **1**:8.
87. Odetoynbo JA: **Preliminary investigation on the use of a light trap for sampling malaria vectors in the Gambia.** *Bull World Health Organ* 1969, **40**:547–556.
88. Service MW: *Mosquito ecology-Field sampling methods*. New York: John Wiley and Sons; 1977.
89. Obenauer PJ, Kaufman PE, Kline DL, Allan SA: **Detection of and monitoring for *Aedes albopictus* (Diptera: Culicidae) in suburban and sylvatic habitats in North Central Florida using fur sampling techniques.** *Environ Entomol* 2010, **39**:1608–1616.
90. Dusfour I, Carinci R, Gaborit P, Issaly J, Girod R: **Evaluation of four methods for collecting malaria vectors in French Guiana.** *J Economic Entomol* 2010, **103**:973–976.
91. Moore SJ, Zunwei D, Hongning Z, Xuezhong W, Hongbing L, Yujiang X, Hill N: **The efficacy of different mosquito trapping methods in a forest-fringe village, Yunnan Province, Southern China.** *Southeast Asian J Trop Med Public Health* 2001, **32**:282–289.
92. Hoel DF, Kline DL, Allan SA, Grant A: **Evaluation of carbon dioxide, 1-octen-3-ol, and lactic acid as baits in Mosquito Magnet Pro traps for *Aedes albopictus* in North Central Florida.** *J Am Mosq Control Assoc* 2007, **23**:11–17.
93. Mathenge E, Killeen GF, Oulo D, Irungu L, Ndegwa P, Knols BGJ: **Development of an exposure-free bednet trap for sampling Afrotropical malaria vectors.** *Med Vet Entomol* 2002, **16**:67–74.
94. Feachem RGA, Phillips AA, Hwang J, Cotter C, Wielgosz B, Greenwood BM, Sabot O, Rodriguez MH, Abeyasinghe RR, Ghebreyesus TA: **Shrinking the malaria map: progress and prospects.** *Lancet* 2010, **376**:1566–1578.
95. O'Meara WP, Bejon P, Mwangi TW, Okiro EA, Peshu N, Snow RW, Newton C, Marsh K: **Effect of a fall in malaria transmission on morbidity and mortality in Kilifi, Kenya.** *Lancet* 2008, **372**:1555–1562.
96. Campbell CC: **Halting the toll of malaria in Africa.** *Am J Trop Med Hyg* 2008, **78**:851–853.
97. Roberts L, Enserink M: **Malaria. Did they really say ... eradication?.** *Science* 2007, **318**:1544–1545.
98. Tanner M, Savigny D: **Malaria eradication back on the table.** *Bull World Health Organ* 2008, **86**:82.

99. Greenwood B: **Can malaria be eliminated?** *Trans R Soc Trop Med Hyg* 2009, **103**:S2-S5.
100. Greenwood BM, Fidock DA, Kyle DE, Kappe SH, Alonso PL, Collins FH, Duffy PE: **Malaria: progress, perils, and prospects for eradication.** *J Clin Invest* 2008, **118**:1266–1276.
101. Bayoh MN, Mathias DK, Odiere MR, Mutuku FM, Kamau L, Gimnig JE, Vulule JM, Hawley WA, Hamel MJ, Walker ED: ***Anopheles gambiae*: historical population decline associated with regional distribution of insecticide-treated bed nets in western Nyanza Province.** *Kenya. Malar J* 2010, **9**:62.
102. Bernier UR, Kline DL, Allan SA, Barnard DR: **Laboratory comparison of *Aedes aegypti* attraction to human odors and to synthetic human odor compounds and blends.** *J Am Mos Cont Assoc* 2007, **23**:288–293.
103. Krockel U, Rose A, Eiras ÁE, Geier M: **New tools for surveillance of adult yellow fever mosquitoes: comparison of trap catches with human landing rates in an urban environment.** *J Am Mos Cont Assoc* 2006, **22**:229–238.
104. Smallegange RC, Qiu YT, van Loon JJ, Takken W: **Synergism between ammonia, lactic acid and carboxylic acids as kairomones in the host-seeking behaviour of the malaria mosquito *Anopheles gambiae sensu stricto* (Diptera: Culicidae).** *Chem Senses* 2005, **30**:145–152.
105. Smallegange RC, Qiu YT, Bukovinszkiné-Kiss G, Van Loon JJA, Takken W: **The effect of aliphatic carboxylic acids on olfaction-based host-seeking of the malaria mosquito *Anopheles gambiae sensu stricto*.** *J Chem Ecol* 2009, **35**:933–943.
106. Qiu YT, Smallegange RC, Ter Braak CJF, Spitzen J, Van Loon JJA, Jawara M, Milligan P, Galimard AM, Van Beek TA, Knols BGJ: **Attractiveness of MM-X traps baited with human or synthetic odor to mosquitoes (Diptera: Culicidae) in The Gambia.** *J Med Entomol* 2007, **44**:970–983.
107. Okumu FO, Killeen GF, Ogoma S, Biswaro L, Smallegange RC, Mbeyela E, Titus E, Munk C, Ngonyani H, Takken W: **Development and field evaluation of a synthetic mosquito lure that is more attractive than humans.** *PLoS One* 2010, **5**:e8951.

Additional file

Additional file 1 as DOCX

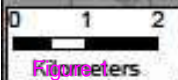
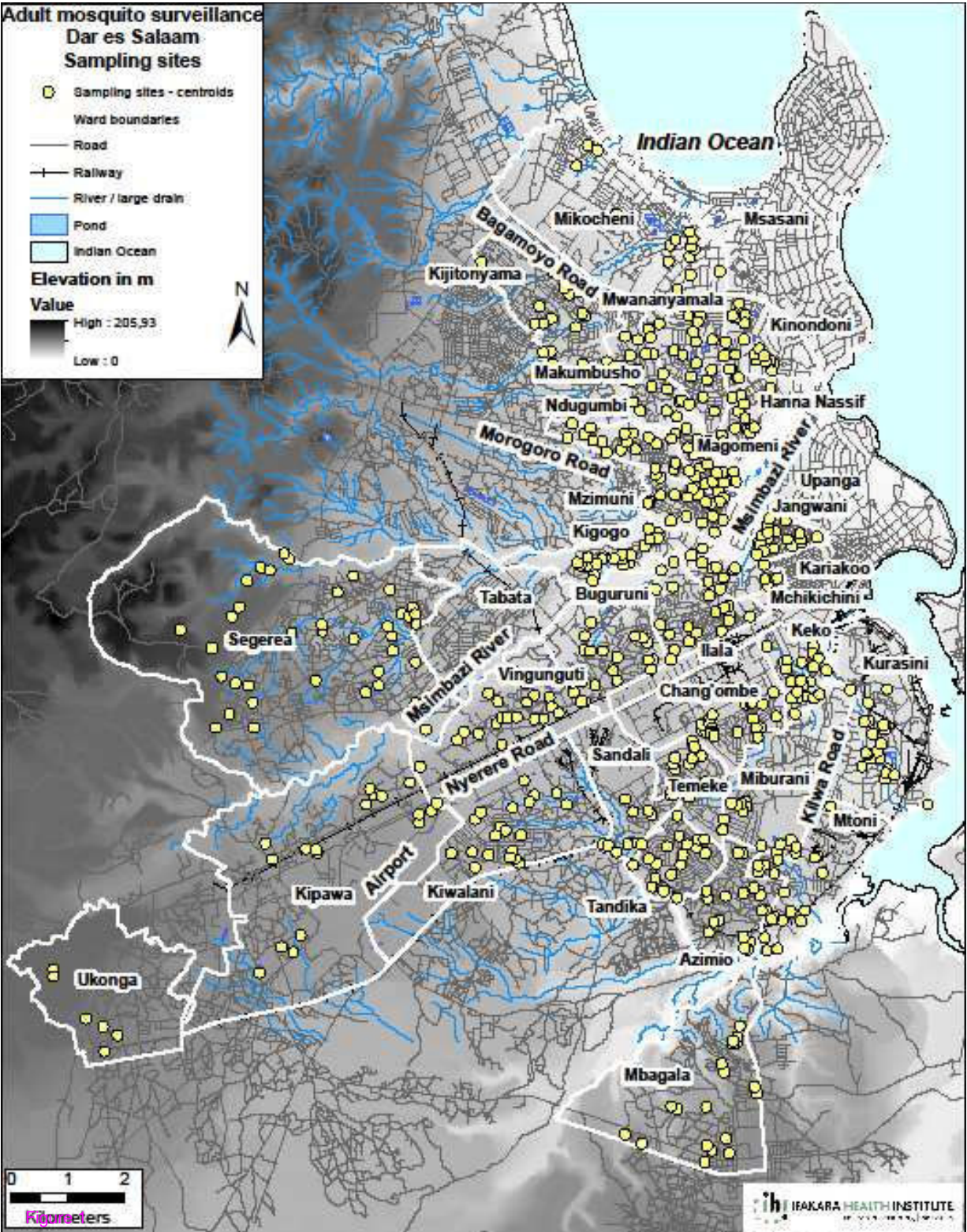
Additional file 1: Table S1. Standardized UMCP forms for routine adult mosquito surveillance teams to help control for and minimize data fabrication by CORPs.

Adult mosquito surveillance

Dar es Salaam Sampling sites

- Sampling sites - centroids
- Ward boundaries
- Road
- Railway
- River / large drain
- Pond
- Indian Ocean

Elevation in m



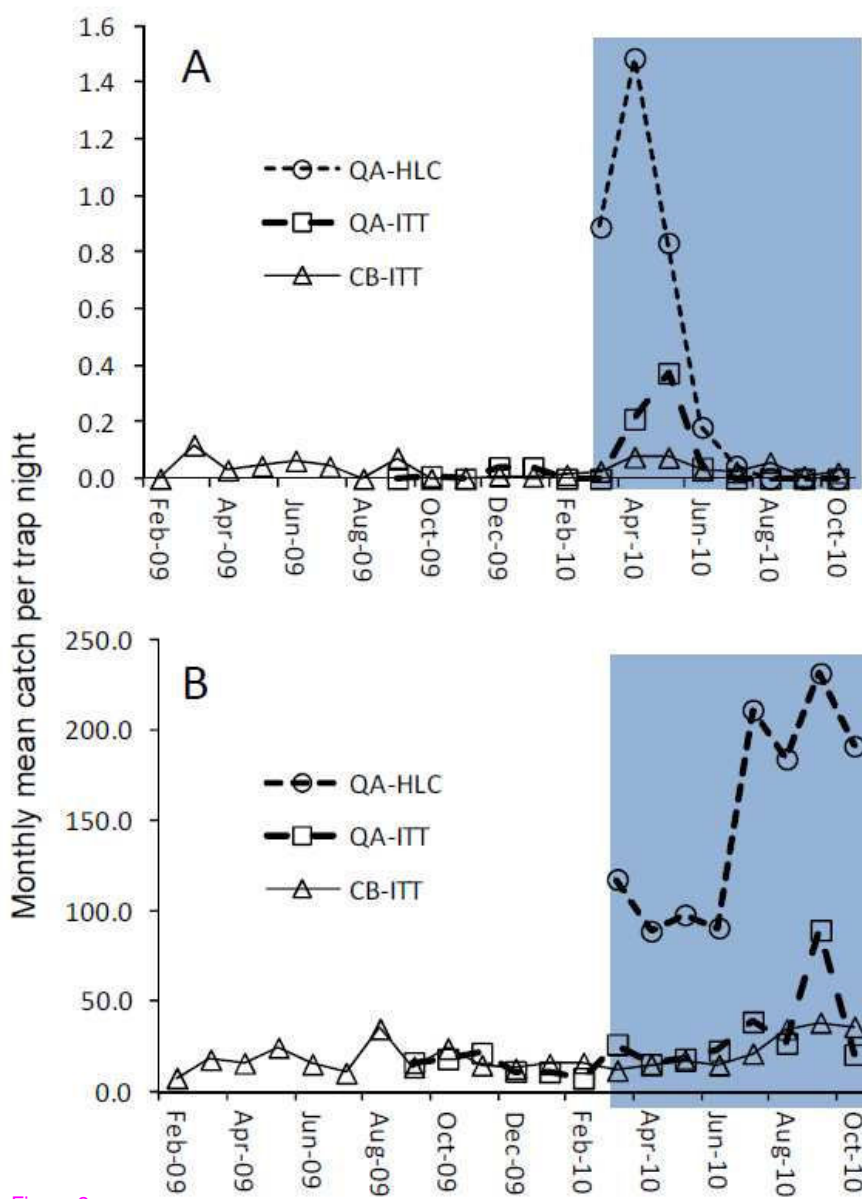
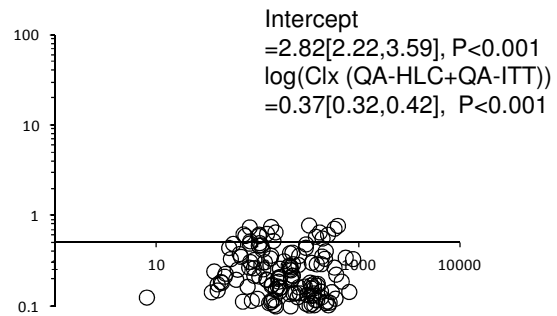
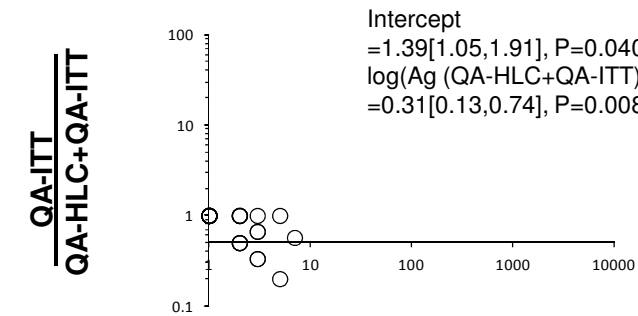
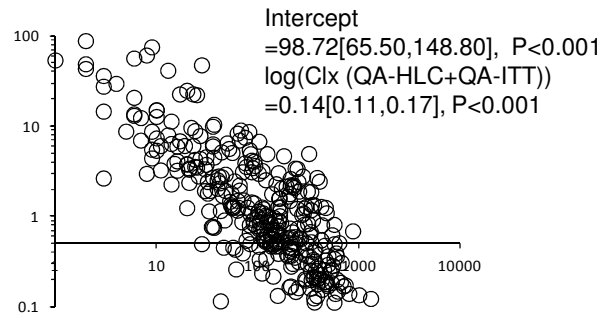
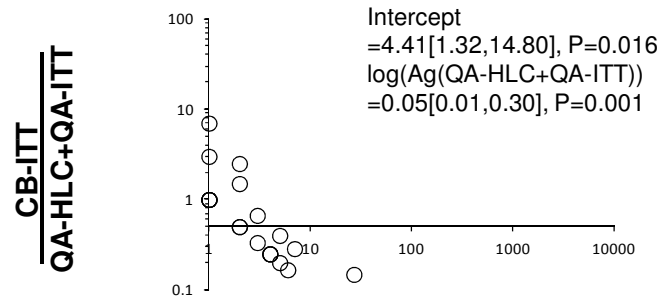


Figure 2

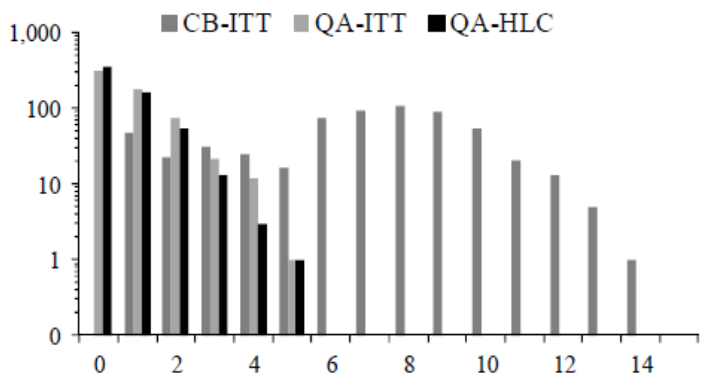
Anopheles gambiae s.l

Culex

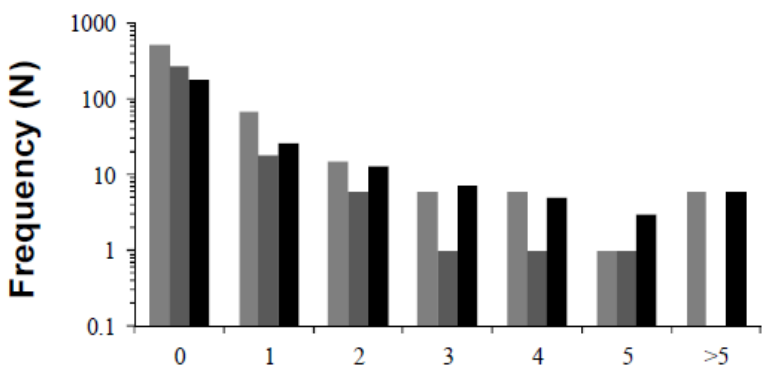


QA-HLC+QA-ITT

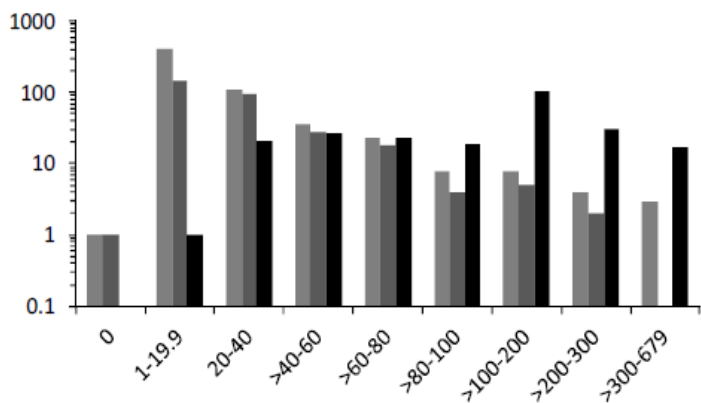
Figure 3



Number of trap nights per location



Mean *Anopheles gambiae* catch per trap night



Mean culicine catch per trap night

STRATIFICATION CRITERIA

Any primary vector caught
versus
No primary vector caught



Highest 5% of mean primary vector catch
versus
Lowest 95% of mean primary vector catch

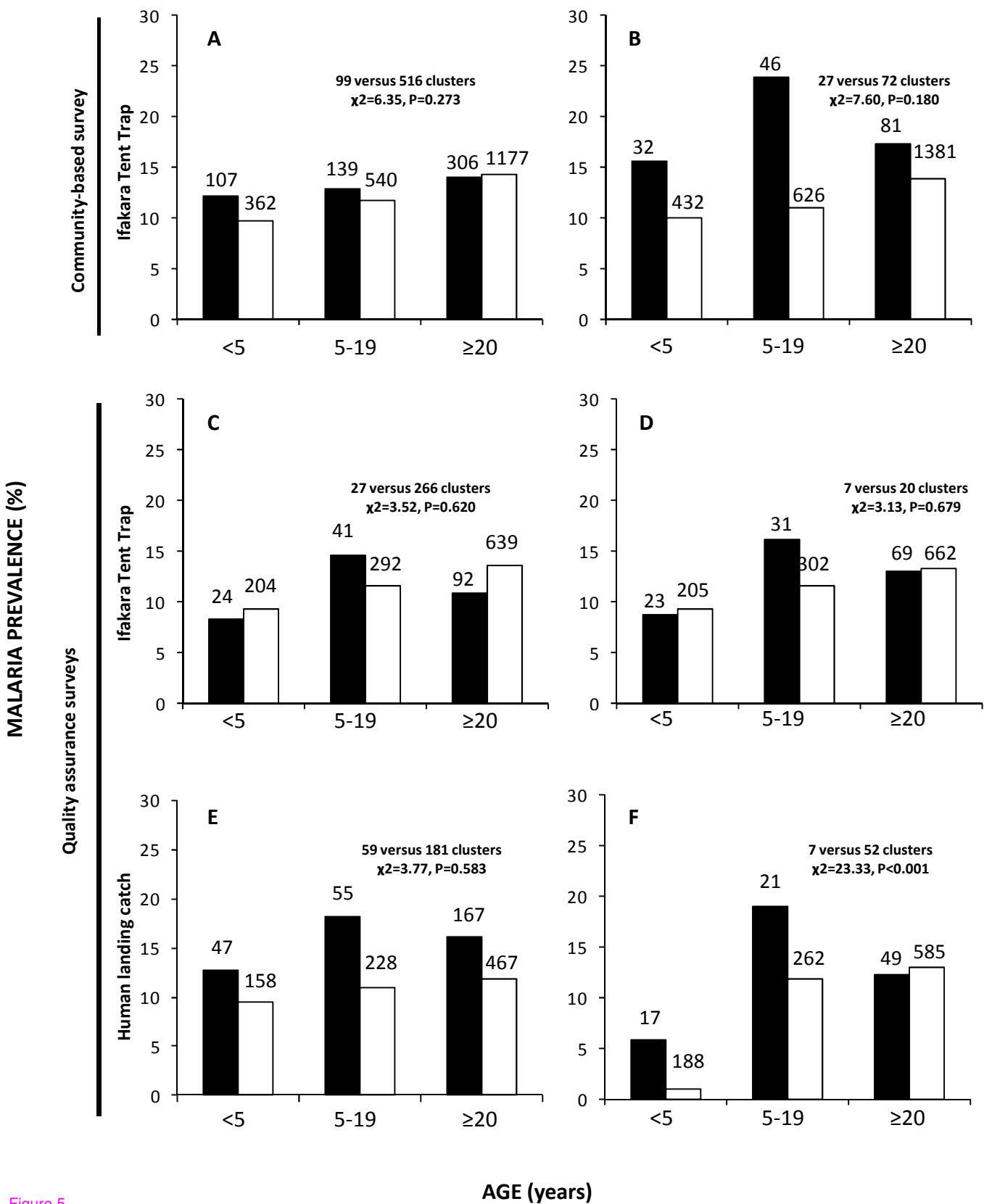


Figure 5

Additional files provided with this submission:

Additional file 1: UMCP_adult mosquito control forms;.docx, 12K

<http://www.malariajournal.com/imedia/3648907106853684/supp1.docx>