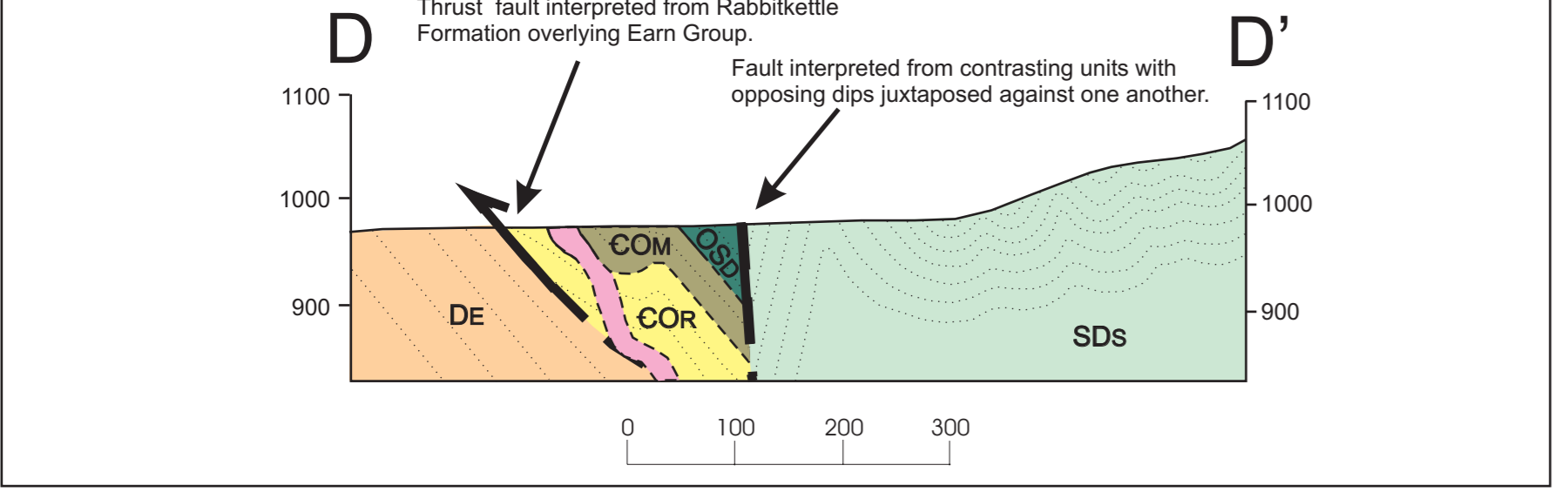
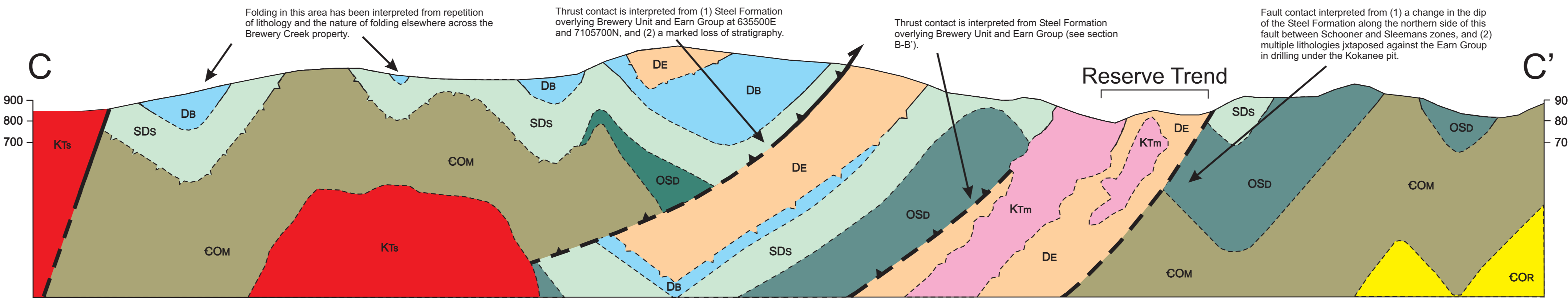
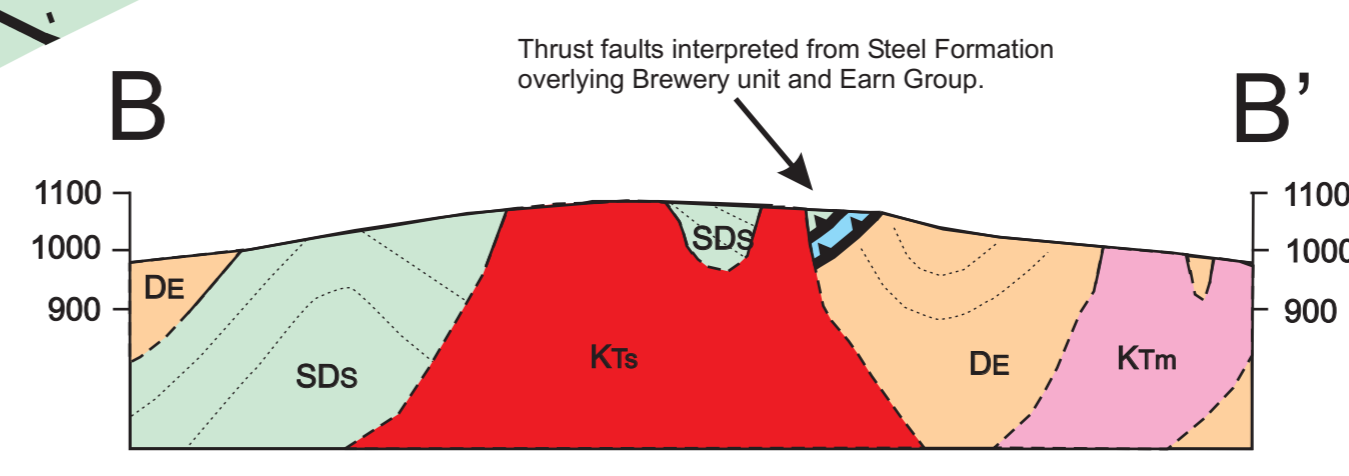
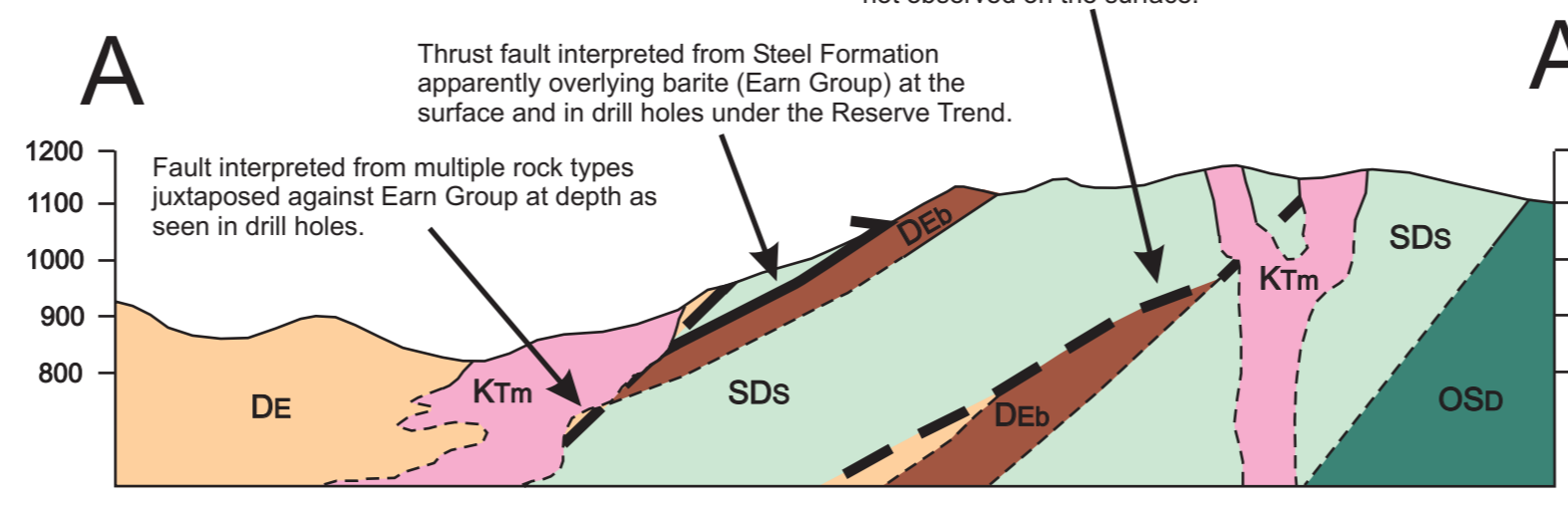
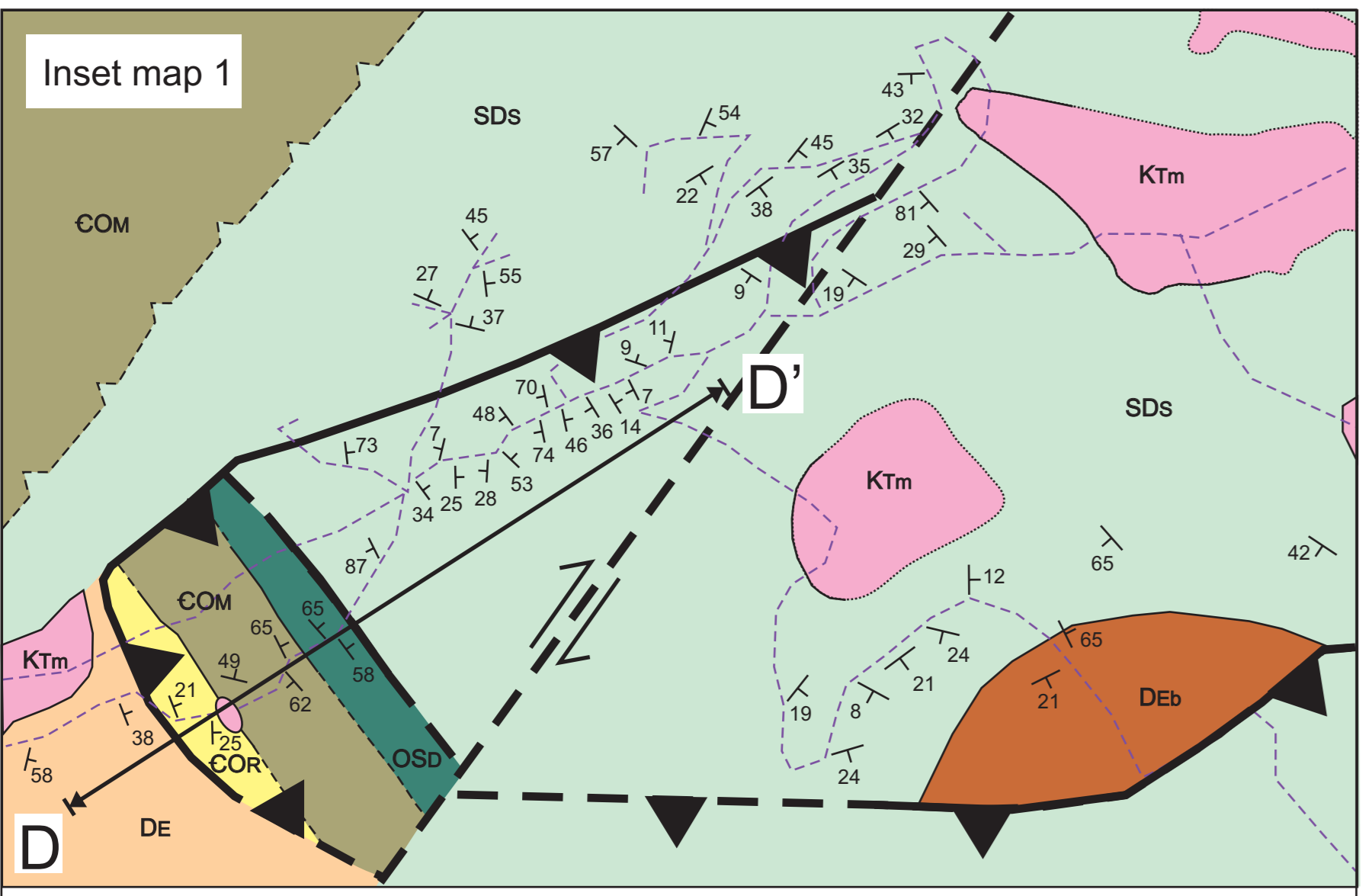
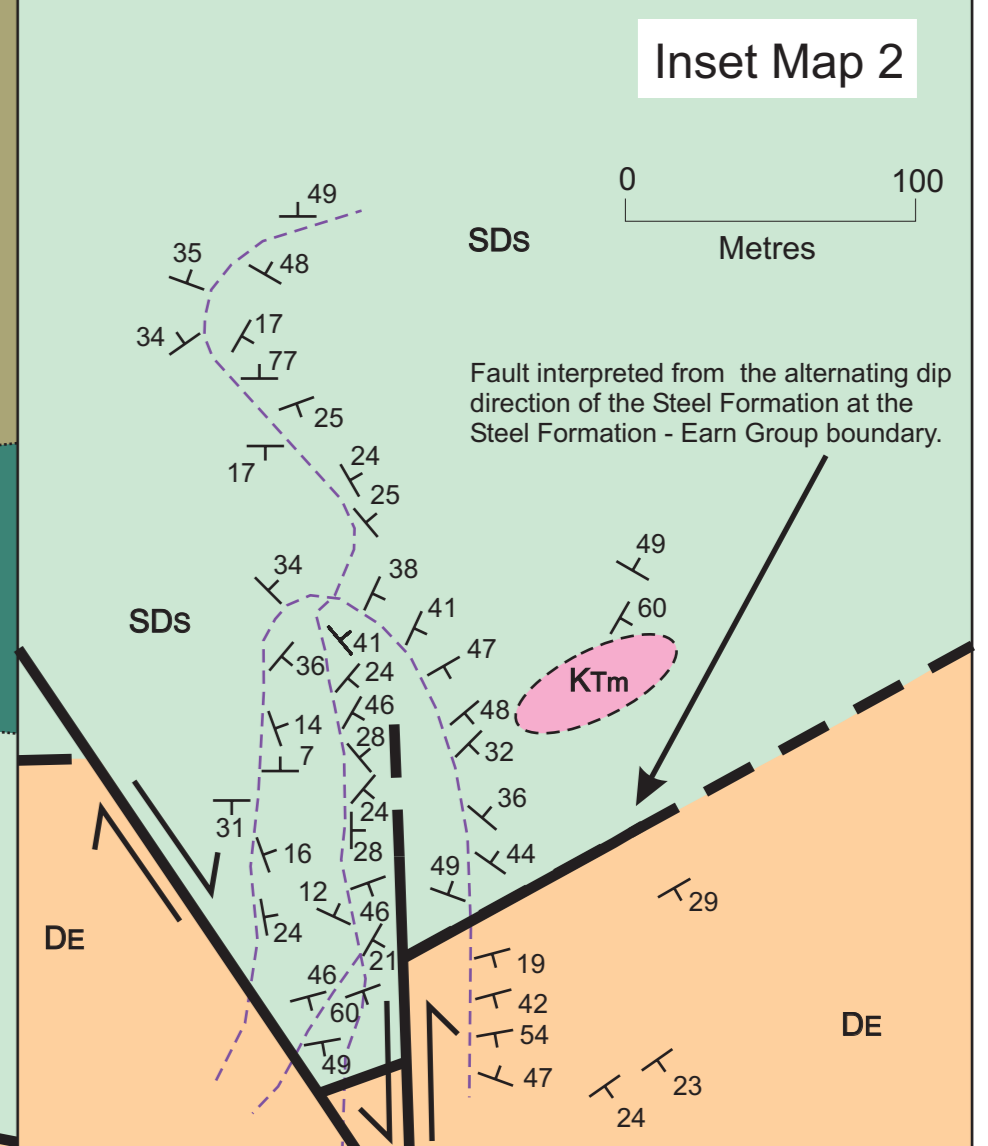
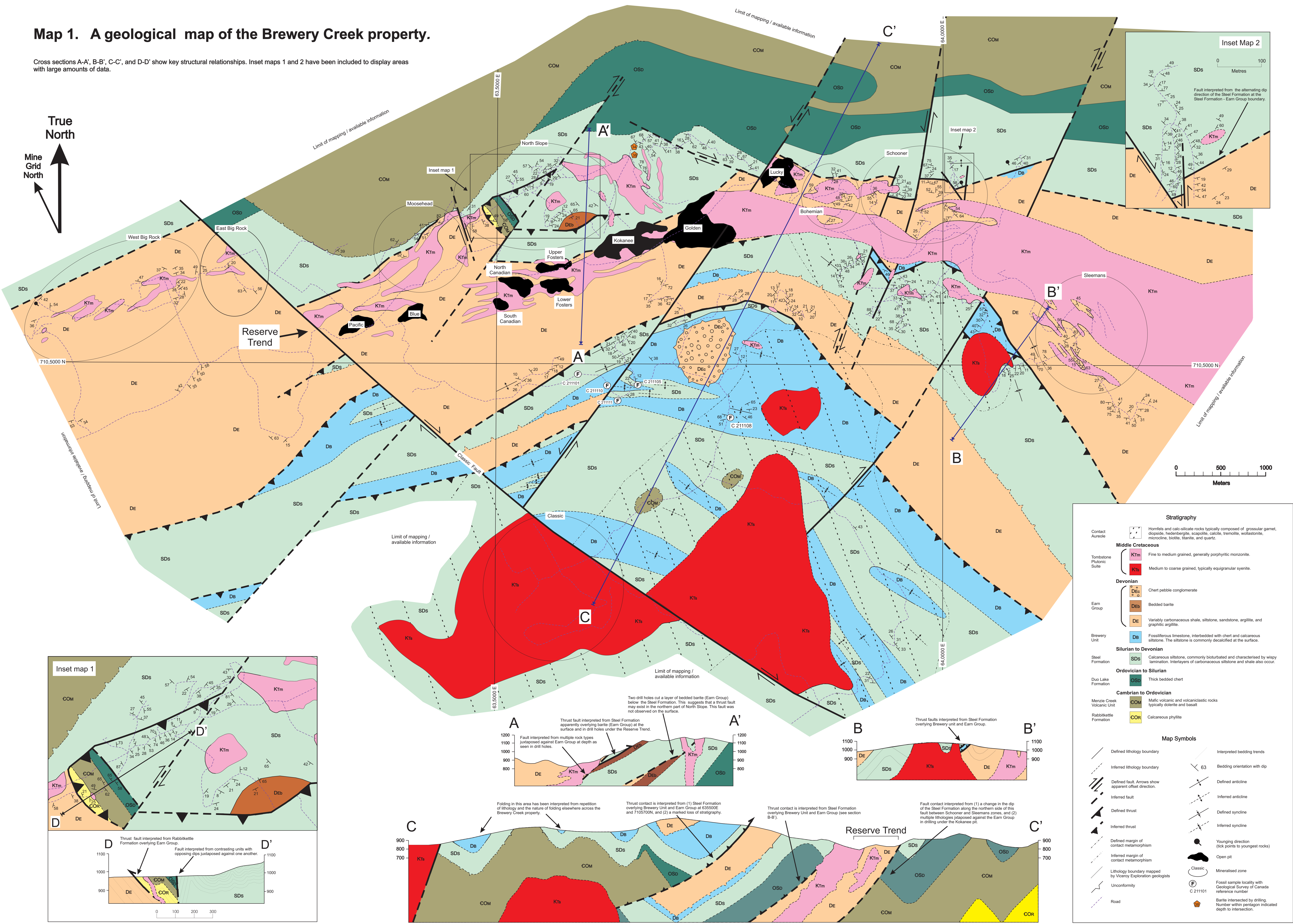


Map 1. A geological map of the Brewery Creek property.

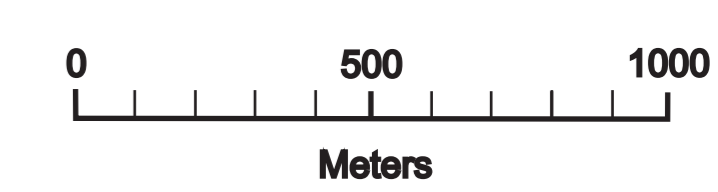
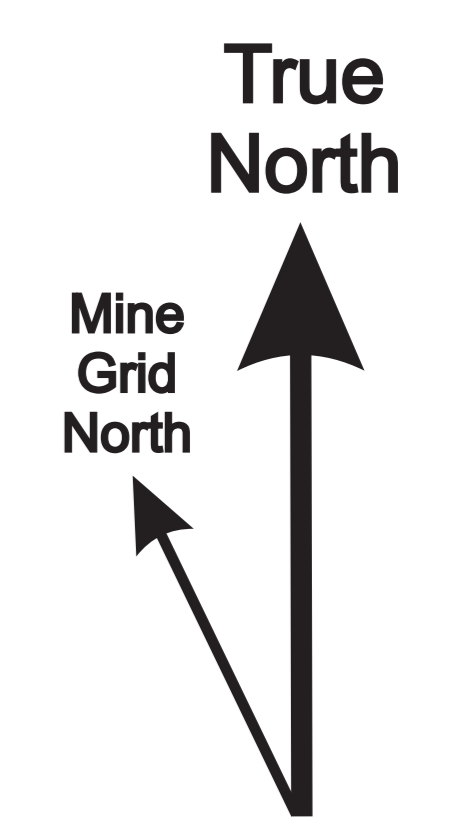
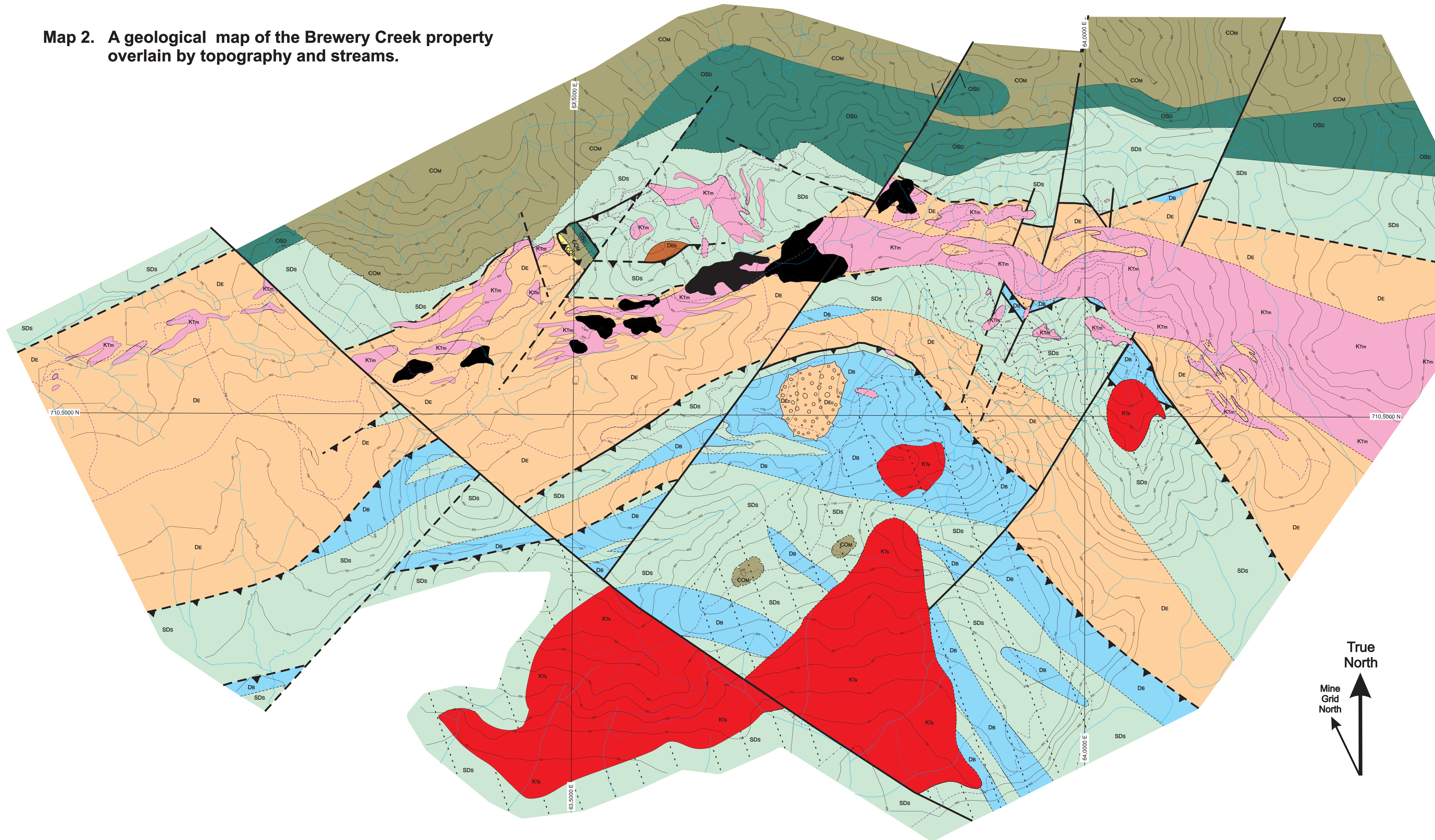
Cross sections A-A', B-B', C-C', and D-D' show key structural relationships. Inset maps 1 and 2 have been included to display areas with large amounts of data.



Stratigraphy	
Contact Aureole	Horfels and calc-silicate rocks typically composed of grossular garnet, diopside, hedenbergite, scapolite, calcite, tremolite, wollastonite, microcline, biotite, titanite, and quartz.
Middle Cretaceous	
KTm	Fine to medium grained, generally porphyritic monzonite.
KTs	Medium to coarse grained, typically equigranular syenite.
Devonian	
DEc	Chert pebble conglomerate
DEb	Bedded barite
DE	Variably carbonaceous shale, siltstone, sandstone, argillite, and graphitic argillite.
DB	Fossiliferous limestone, interbedded with chert and calcareous siltstone. The siltstone is commonly decalcified at the surface.
Silurian to Devonian	
SDs	Calcareous siltstone, commonly bioturbated and characterised by wispy lamination. Interlayers of carbonaceous siltstone and shale also occur.
Ordovician to Silurian	
OSd	Thick bedded chert
Cambrian to Ordovician	
COM	Mafic volcanic and volcanoclastic rocks typically diorite and basalt
COR	Calcareous phyllite

Map Symbols	
—	Defined lithology boundary
- - -	Inferred lithology boundary
—/—	Defined fault. Arrows show apparent offset direction.
- - -/ - - -	Inferred fault
—▲—	Defined thrust
- - -▲ - - -	Inferred thrust
—●—	Defined margin of contact metamorphism
- - -● - - -	Inferred margin of contact metamorphism
—○—	Lithology boundary mapped by Viceroy Exploration geologists
—○—	Unconformity
—	Road
—	Interpreted bedding trends
63	Bedding orientation with dip
—▲—	Defined anticline
- - -▲ - - -	Inferred anticline
—▼—	Defined syncline
- - -▼ - - -	Inferred syncline
—●—	Younging direction (tick points to youngest rocks)
●	Open pit
○	Mineralised zone
Ⓟ	Fossil sample locality with Geological Survey of Canada reference number
Ⓟ	Barite intersected by drilling. Number within pentagon indicated depth to intersection.

Map 2. A geological map of the Brewery Creek property overlain by topography and streams.



Stratigraphy		Map Symbols	
<p>Contact Aureole</p> <p>Middle Cretaceous</p> <ul style="list-style-type: none"> KTm Fine to medium grained, generally porphyritic monzonite. Kts Medium to coarse grained, typically equigranular syenite. <p>Devonian</p> <ul style="list-style-type: none"> DEc Chert pebble conglomerate DEb Bedded barite DE Variably carbonaceous shale, siltstone, sandstone, argillite, and graphitic argillite. 	<p>Brewery Unit</p> <ul style="list-style-type: none"> Db Fossiliferous limestone, interbedded with chert and calcareous siltstone. The siltstone is commonly decalcified at the surface. <p>Silurian to Devonian</p> <ul style="list-style-type: none"> SDs Calcareous siltstone, commonly bioturbated and characterised by wispy lamination. Interlayers of carbonaceous siltstone and shale also occur. <p>Ordovician to Silurian</p> <ul style="list-style-type: none"> OSd Thick bedded chert <p>Cambrian to Ordovician</p> <ul style="list-style-type: none"> COM Mafic volcanic and volcanoclastic rocks typically dolerite and basalt COR Calcareous phyllite 	<p>Defined lithology boundary</p> <p>Inferred lithology boundary</p> <p>Defined fault</p> <p>Inferred fault</p> <p>Defined thrust</p> <p>Inferred thrust</p>	<p>Defined margin of contact metamorphism</p> <p>Inferred margin of contact metamorphism</p> <p>Lithology boundary mapped by Viceroy Exploration geologists</p> <p>Unconformity</p> <p>Defined anticline</p> <p>Inferred anticline</p> <p>Defined syncline</p> <p>Inferred syncline</p> <p>Road</p> <p>Open pit</p>