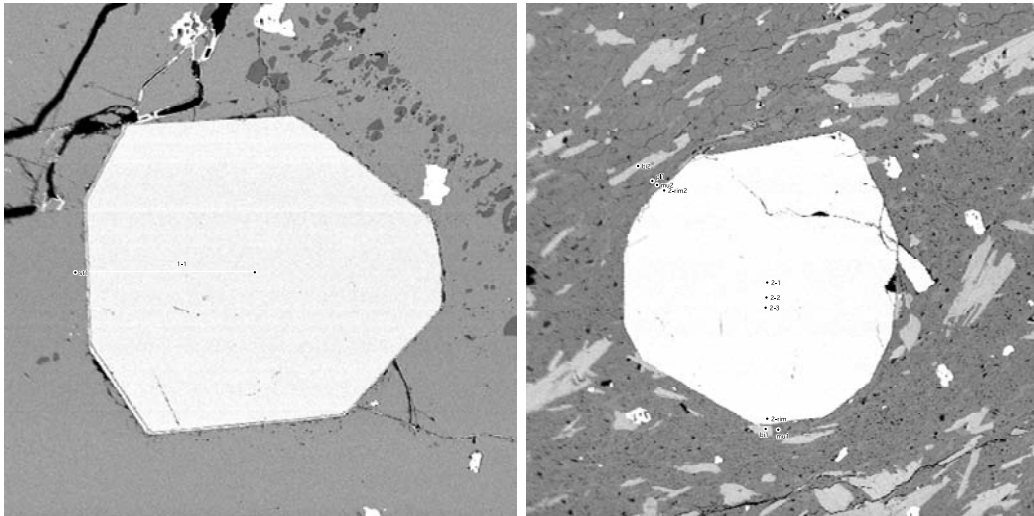


APPENDIX 1 - XRF DATA

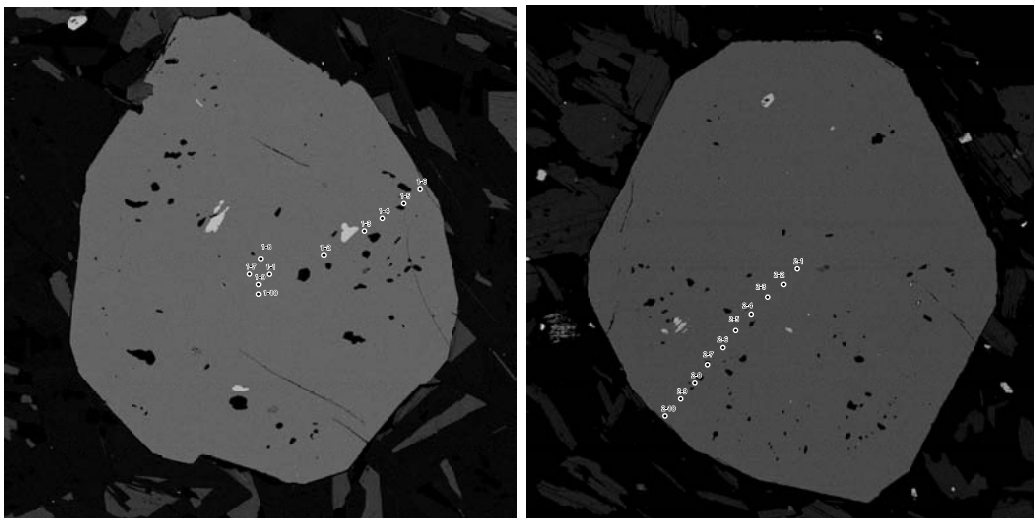
| Analyte | SiO2 | TiO2 | Al2O3 | Fe2O3T | MnO | MgO | CaO | Na2O | K2O | P2O5 | SO3 | LOI | SUM | |
|-----------|---------|--------|-------|--------|--------|-------|--------|-------|--------|-------|-------|------|------|-------|
| LINE | KA1,2 | KA1,2 | KA1,2 | KA1,2 | KA1,2 | KA1,2 | KA1,2 | KA1,2 | KA1,2 | KA1,2 | KA1,2 | | | |
| CRYSTAL | InSb | LIF100 | PET | LIF100 | LIF100 | OVO55 | LIF100 | OVO55 | LIF100 | GE | GE | | | |
| KV | 40 | 50 | 40 | 50 | 50 | 40 | 50 | 30 | 50 | 40 | 40 | | | |
| mA | 60 | 50 | 60 | 50 | 50 | 60 | 50 | 90 | 50 | 60 | 60 | | | |
| TIME(sec) | 45 | 90 | 65 | 90 | 90 | 40 | 50 | 65 | 25 | 35 | 240 | | | |
| UNITS | % | % | % | % | % | % | % | % | % | % | % | % | % | |
| SAMPLE | LAB # | | | | | | | | | | | | | |
| DL-16 | 5692-03 | 61.9 | 0.96 | 19.4 | 7.64 | 0.10 | 3.02 | 0.01 | 0.91 | 3.42 | 0.13 | bd | 2.05 | 99.5 |
| DL-25 | 5692-01 | 67.5 | 0.89 | 15.5 | 5.84 | 0.08 | 2.09 | 0.08 | 1.66 | 3.18 | 0.12 | bd | 2.26 | 99.3 |
| DL-30 | 5767-13 | 59.6 | 1.03 | 19.0 | 8.13 | 0.12 | 3.18 | 0.84 | 1.82 | 3.41 | 0.17 | 0.05 | 3.40 | 100.8 |
| DL-36 | 4850-10 | 62.1 | 0.89 | 18.2 | 10.2 | 0.12 | 2.12 | 0.49 | 0.45 | 3.66 | 0.33 | 0.01 | 1.90 | 100.4 |
| DL-38 | 5767-11 | 66.7 | 0.91 | 16.0 | 6.26 | 0.12 | 2.24 | 0.54 | 1.33 | 3.65 | 0.14 | bd | 1.89 | 99.8 |
| DL-44 | 4850-11 | 62.0 | 1.02 | 19.7 | 7.50 | 0.08 | 1.25 | 0.27 | 0.66 | 3.78 | 0.08 | bd | 4.41 | 100.8 |
| DL-62 | 5692-04 | 59.7 | 1.06 | 19.1 | 8.05 | 0.12 | 2.99 | 1.44 | 3.76 | 2.15 | 0.04 | bd | 1.75 | 100.2 |
| DL-65 | 4850-13 | 70.1 | 0.90 | 15.4 | 6.29 | 0.08 | 1.95 | 0.32 | 0.85 | 2.88 | 0.13 | bd | 1.82 | 100.7 |
| DL-68 | 5767-12 | 59.3 | 0.94 | 19.6 | 8.23 | 0.14 | 3.19 | 1.01 | 1.03 | 4.12 | 0.34 | 0.12 | 2.84 | 100.8 |
| NT49 | 5767-06 | 60.4 | 0.99 | 19.7 | 7.96 | 0.13 | 2.92 | 0.13 | 0.68 | 4.40 | 0.16 | 0.01 | 1.98 | 99.5 |
| NT86 | 5767-10 | 61.7 | 1.28 | 18.7 | 7.47 | 0.20 | 2.16 | 1.01 | 2.04 | 3.73 | 0.16 | 0.02 | 2.08 | 100.5 |
| NT87 | 5767-03 | 58.7 | 1.26 | 20.9 | 8.02 | 0.12 | 2.02 | 0.87 | 1.62 | 4.61 | 0.14 | 0.06 | 2.17 | 100.5 |
| NT95 | 5767-01 | 61.8 | 1.05 | 18.5 | 7.85 | 0.10 | 3.62 | 0.77 | 1.46 | 3.56 | 0.15 | 0.01 | 1.89 | 100.8 |
| NT103 | 5767-09 | 62.6 | 0.90 | 18.4 | 8.51 | 0.32 | 1.54 | 0.56 | 0.63 | 4.55 | 0.16 | 0.05 | 2.13 | 100.3 |
| NT186 | 5767-07 | 65.3 | 0.75 | 16.6 | 7.34 | 0.86 | 1.96 | 0.50 | 0.35 | 4.43 | 0.17 | bd | 2.20 | 100.5 |
| NT206 | 5767-05 | 67.2 | 0.71 | 12.3 | 12.3 | 0.26 | 1.45 | 0.72 | 0.55 | 2.52 | 0.17 | 0.07 | 1.30 | 99.5 |
| TE 19 | 5569-01 | 63.1 | 1.02 | 18.9 | 7.59 | 0.07 | 1.56 | 0.37 | 0.83 | 3.33 | 0.13 | 0.01 | 3.91 | 100.8 |
| TE 21 | 4850-14 | 63.2 | 0.78 | 13.7 | 13.4 | 0.20 | 2.96 | 0.73 | 0.49 | 1.31 | 0.15 | 0.01 | 3.05 | 100.0 |
| TE 33 | 4850-15 | 70.7 | 0.63 | 16.5 | 5.44 | 0.07 | 0.65 | 0.27 | 0.50 | 3.85 | 0.04 | bd | 2.39 | 101.0 |
| TE 35 | 4850-16 | 64.5 | 1.06 | 18.1 | 7.69 | 0.06 | 1.56 | 0.26 | 1.08 | 3.28 | 0.07 | bd | 3.30 | 101.0 |
| TE 36 | 4850-17 | 70.8 | 0.63 | 15.7 | 6.41 | 0.01 | 0.97 | 0.25 | 0.44 | 3.42 | 0.13 | 0.01 | 2.19 | 100.9 |

APPENDIX 2 - MICROPROBE ANALYSIS LOCATIONS IN GARNET

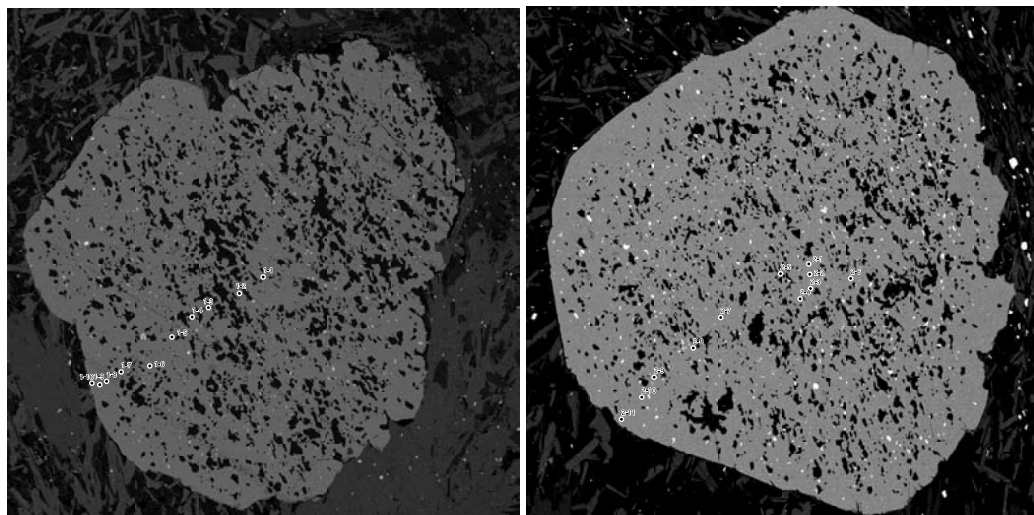
DL-25



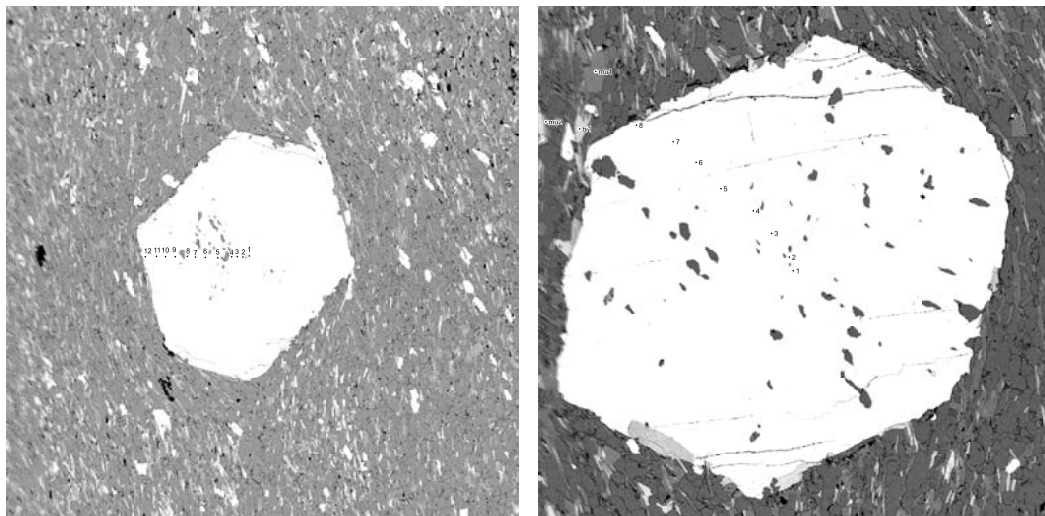
DL-30



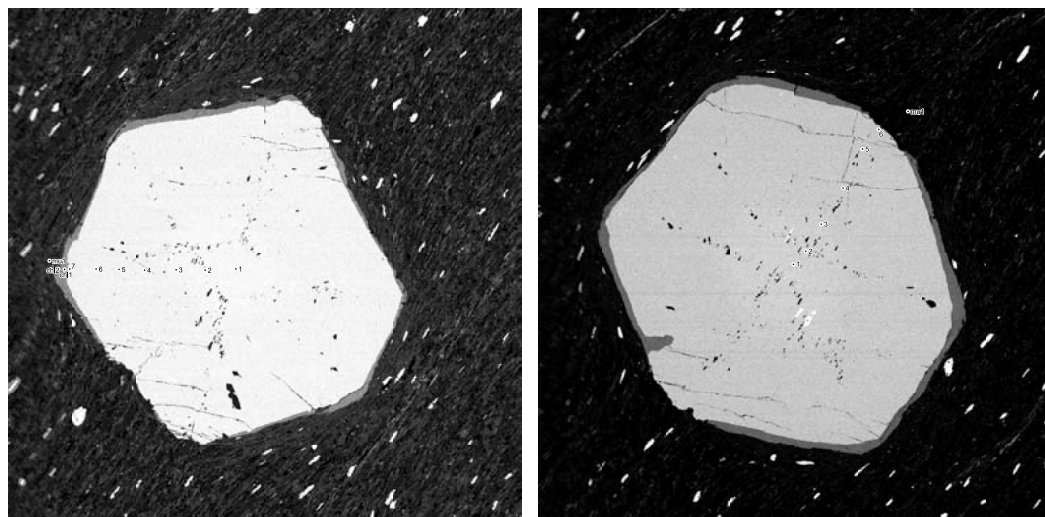
DL-38



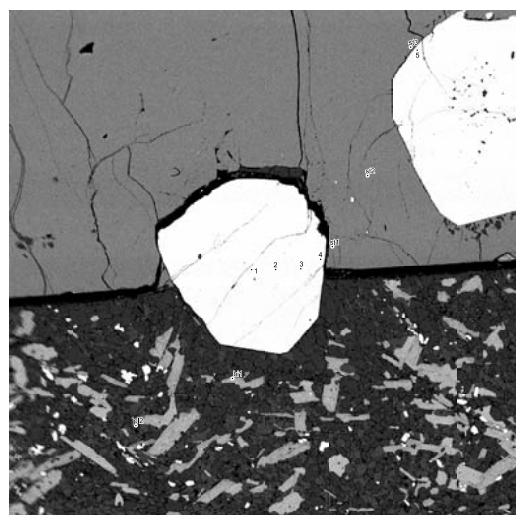
DL-40



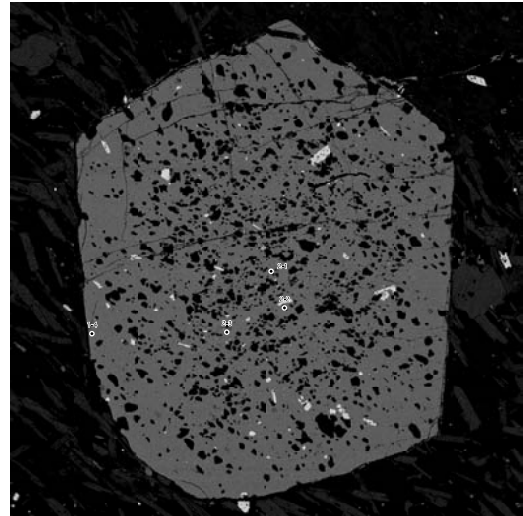
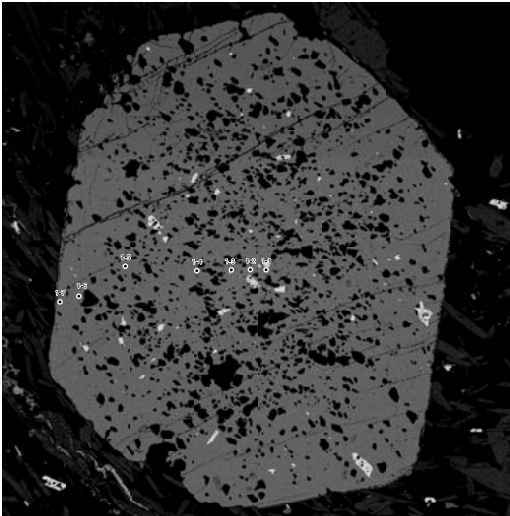
DL-44



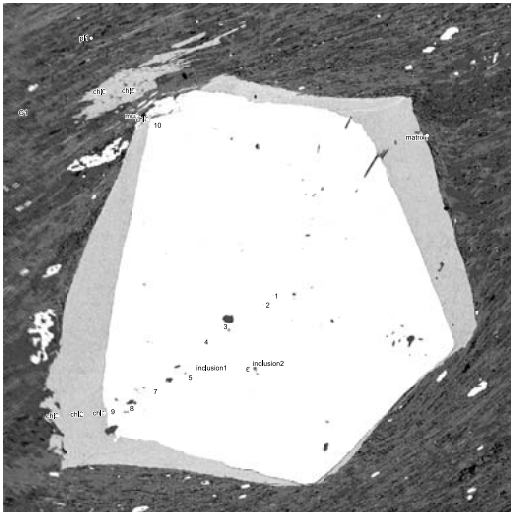
DL-62



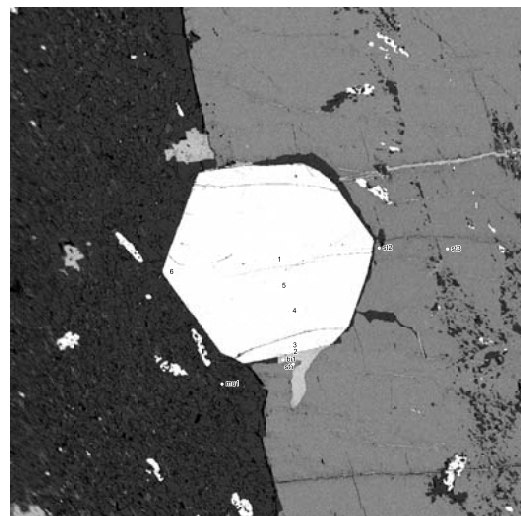
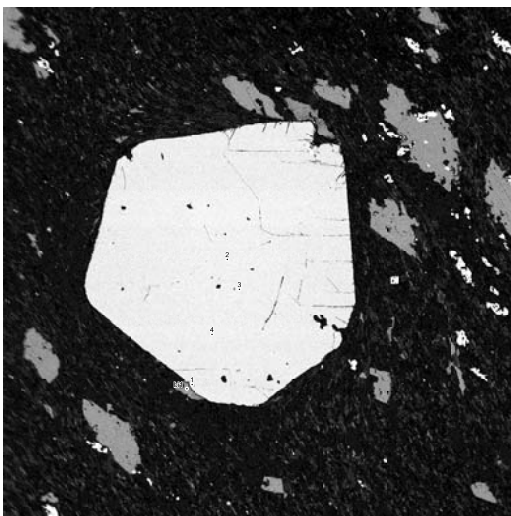
DL-68



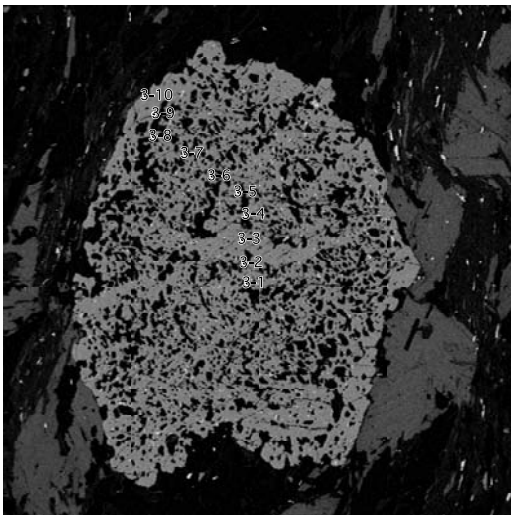
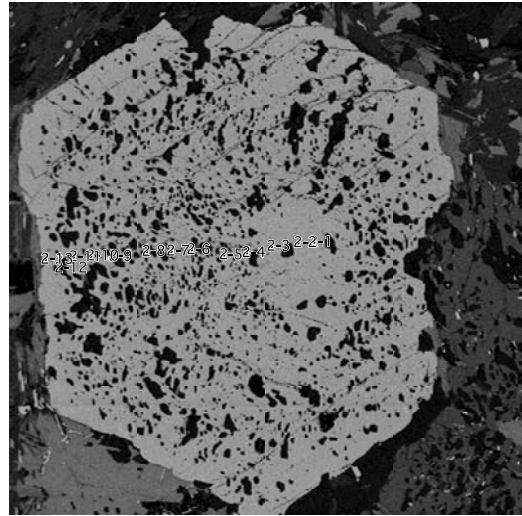
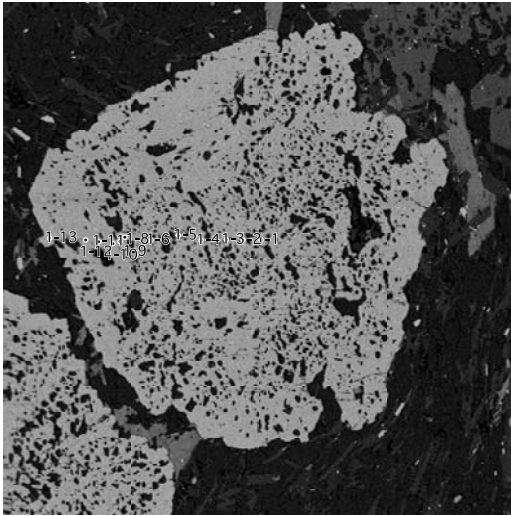
TE19



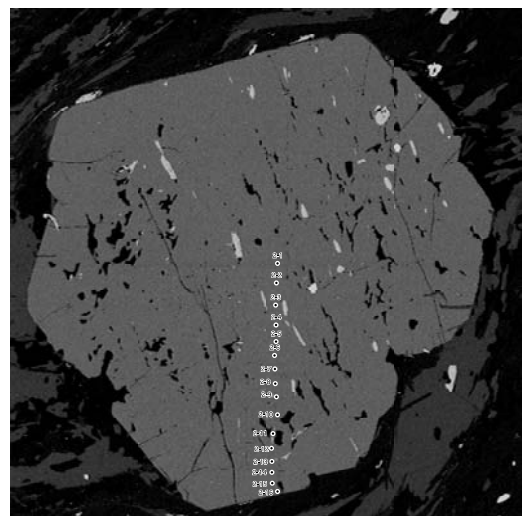
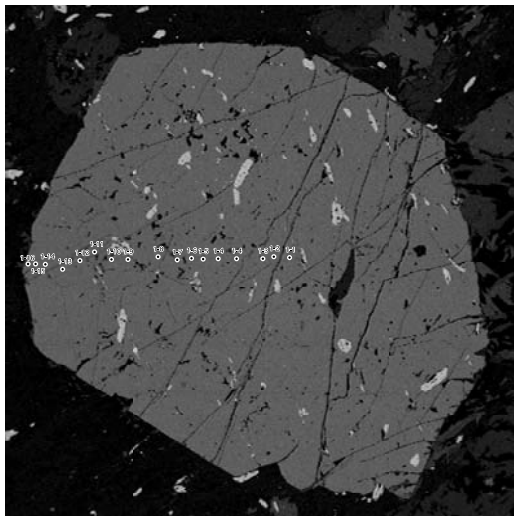
TE35



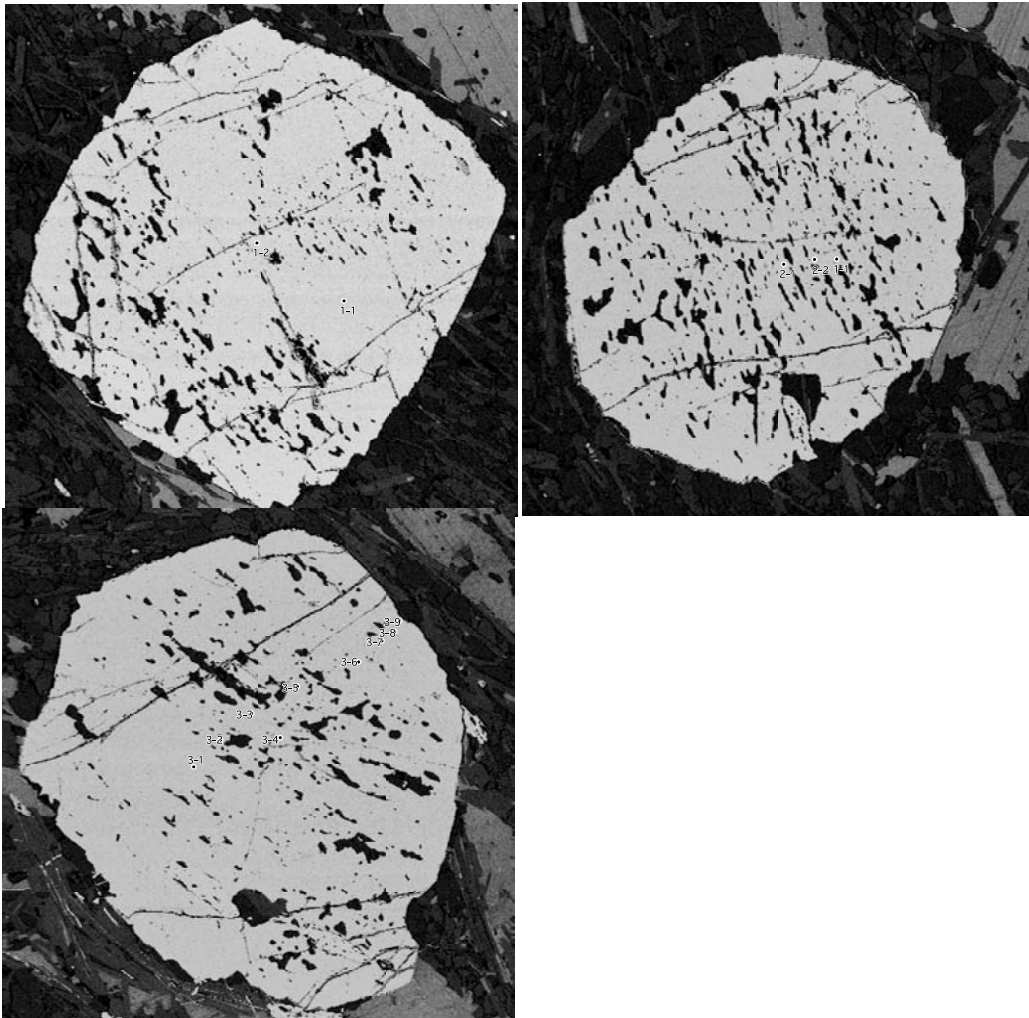
NT49



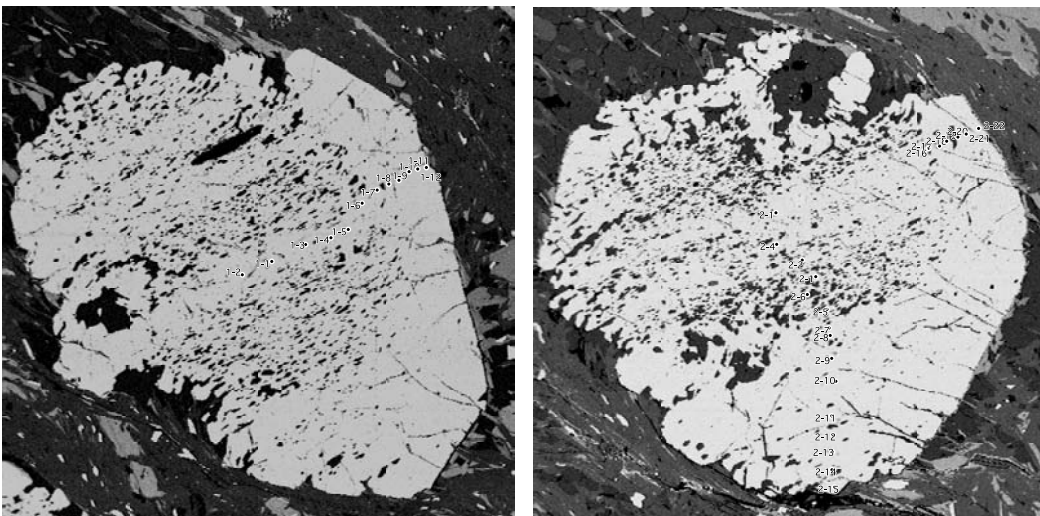
NT86



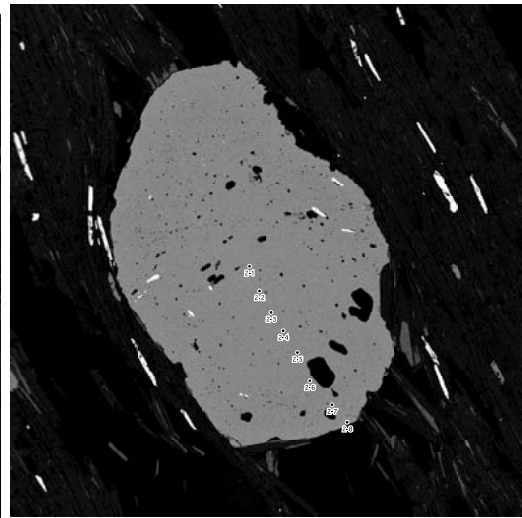
NT95



NT103



NT186



NT206

